

## LATER — SEA RAY



**Builder:** [SEA RAY](#)

**Year Built:** 1998

**Model:** Motor Yacht

**Price:** **PRICE ON APPLICATION**

**Location:** United States

**LOA:** 44' (13.41mm)

**Beam:** 14.25

**Max Draft:** 3' 4" (1.02mm)

**Cruise Speed:** 22 Knots Kts. (25 MPH)

**Max Speed:** 25 Knots Kts. (29 MPH)

Our experienced yacht broker, Andrey Shestakov, will help you choose and buy a yacht that best suits your needs **Later — SEA RAY** from **our catalogue**. Presently, at **Shestakov Yacht Sales Inc.**, we have a wide variety of yachts available on **our sale's list**. We also work in close contact with all the big **yacht manufacturers** from all over the world.

If you would like to buy a yacht **Later — SEA RAY** or would like help answering any questions concerning purchasing, selling or chartering a yacht, please call **+1(954)274-4435**

# TABLE OF CONTENTS

TABLE OF CONTENTS	2
SPECIFICATIONS	5
Overview	5
Basic Information	5
Dimensions	5
Speed, Capacities and Weight	5
Accommodations	6
Hull and Deck Information	6
Engine Information	6
PHOTOS	7
2	7
3	7
4	7
5	7
6	7
7	7
8	8
9	8
10	8
11	8
12	8
13	8
14	9
15	9
16	9
17	9
18	9
19	9

---

20	10
21	10
22	10
23	10
24	10
25	10
26	11
27	11
28	11
29	11
30	11
31	11
32	12
33	12
34	12
35	12
36	12
37	12
38	13
39	13
40	13
41	13
42	13
43	13
44	14
45	14
46	14
47	14
48	14

---

CONTACTS	15
Contact details	15
Telephones	15
Office hours	15
Address	15

---

# SPECIFICATIONS

---

## Overview

---

"Sea Ray got it right with the 400 Sedan Bridge..." PowerBoat Guide

"**Later**" is a well maintained example of the very popular Sea Ray 400 Sedan Bridge with the Rare 3 Stateroom, 2 head layout. Powered by twin **3116 Cat Diesels** rated at 340hp each with roughly 1650 hours. Features include a New Kohler Generator installed in 2021, New Hard Wood Floors and Carpeting on the interior, New Synthetic Decking on the Swim Platform and Steps, Updated Electronics, and SAT TV. The boat is very clean and shows well.

**Please check the FULL SPECS for more details and give us a call for more information and to schedule an appointment to have a look for yourself!**

## Basic Information

---

**Category:** Motor Yacht

**Sub Category:** Cockpit

**Model Year:** 1998

**Year Built:** 1998

**Country:** United States

## Dimensions

---

**LOA:** 44' (13.41mm)

**Beam:** 14.25

**Max Draft:** 3' 4" (1.02mm)

## Speed, Capacities and Weight

---

**Cruise Speed:** 22 Knots Kts. (25 MPH) **Max Speed:** 25 Knots Kts. (29 MPH)

**Water Capacity:** 120 Gallons

**Holding Tank:** 28 Gal Gallons

**Fuel Capacity:** 350 Gal Gallons

---

## Accommodations

---

**Total Cabins:** 3

**Total Heads:** 2

---

## Hull and Deck Information

---

**Hull Material:** Fiberglass

---

## Engine Information

---

**Engines:** 2

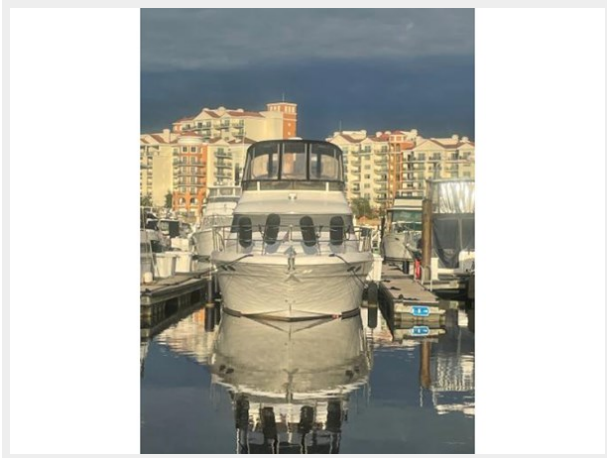
**Manufacturer:** Caterpillar

**Engine Type:** Inboard

**Fuel Type:** Diesel

# PHOTOS

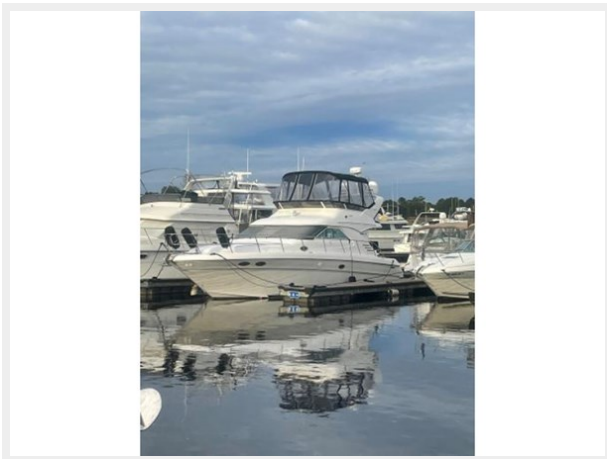
2



3



4



5



6



7



8



9



10



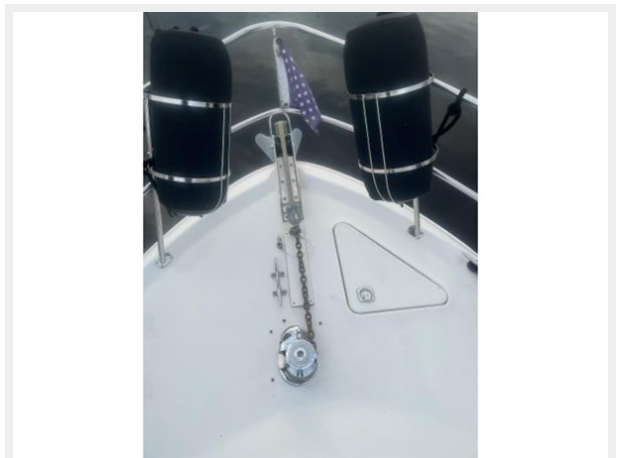
11



12



13





14



15



16



17



18



19



20



21



22



23



24



25



26



27



28



29



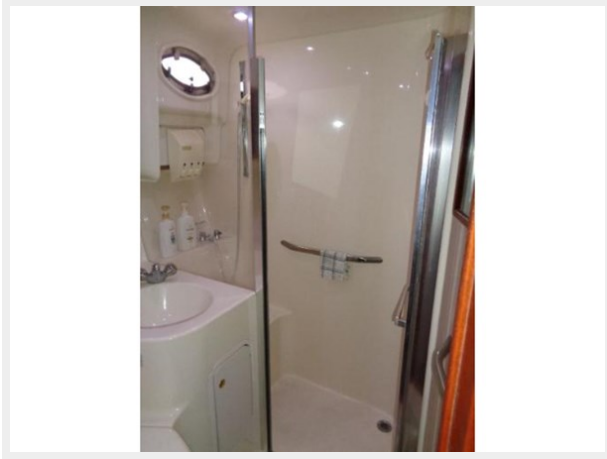
30



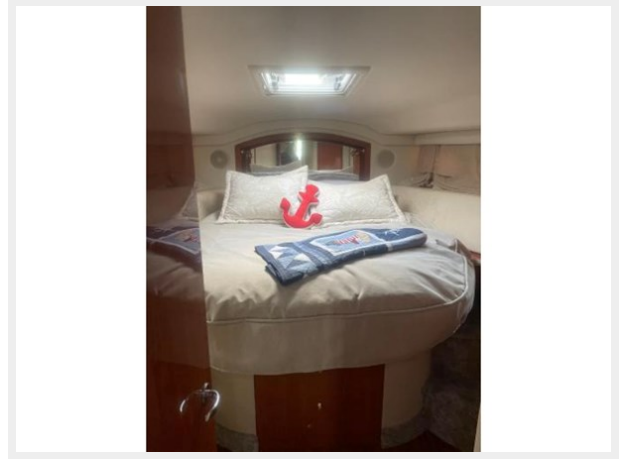
31



32



33



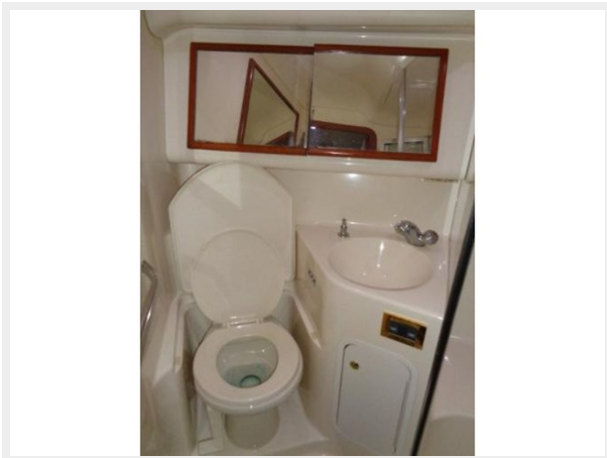
34



35



36



37



38



39



40



41



42



43



44



45



46



47



48



# CONTACTS

---

Andrey Shestakov, leading yacht broker of the sales department of Shestakov Yacht Sales Inc. Shestakov Yacht Sales Inc., the official representative of the Miami/Fort Lauderdale FL headquarters.

## Contact details

---

Email: **andrey@shestakovyachtsales.com**

Web: [shestakovyachtsales.com/en/](https://shestakovyachtsales.com/en/)

## Telephones

---

USA: **+1(954)274-4435**

## Office hours

---

Monday – Saturday: **9:00 - 21:00** EDT

Sunday: **closed**

## Address

---



Harbour Towne Marina, 850 NE 3rd St, STE 213, Dania, FL 33004