

# BENETEAU CASCADIA CURRENT — BENETEAU



**Builder:** BENETEAU

**Year Built:** 2003

**Model:** Cruising Sailboat

**Price:** PRICE ON APPLICATION

**Location:** United States

**LOA:** 43' 2" (13.16mm)

**Beam:** 12.91

**Min Draft:** 5' 7" (1.7mm)

**Max Draft:** 5' 7" (1.7mm)

**Cruise Speed:** 7.5 Knots Kts. (9 MPH)

**Max Speed:** 8.5 Knots Kts. (10 MPH)

Our experienced yacht broker, Andrey Shestakov, will help you choose and buy a yacht that best suits your needs **Beneteau Cascadia Current — BENETEAU** from our catalogue. Presently, at **Shestakov Yacht Sales Inc.**, we have a wide variety of yachts available on our sale's list. We also work in close contact with all the big yacht manufacturers from all over the world.

If you would like to buy a yacht **Beneteau Cascadia Current — BENETEAU** or would like help answering any questions concerning purchasing, selling or chartering a yacht, please call **+1(954)274-4435**

# TABLE OF CONTENTS

TABLE OF CONTENTS	2
SPECIFICATIONS	6
Overview	6
Basic Information	6
Dimensions	7
Speed, Capacities and Weight	7
Accommodations	7
Hull and Deck Information	7
Engine Information	8
PHOTOS	9
Cruising the Chesapeake Bay in Spring	9
Bow	9
Bow	9
Starboard Side	9
Rocna 55 Anchor	10
Port Bow	10
Starboard Bow	10
Starboard Side	10
Starboard Side	10
Port Side	10
Port Side	11
Port Side Amidship	11
Coachroof	11
Port Side Decks	11
Port Side Decks	11
Port Side Decks	11
Port Side Decks	12
Coachroof and Mast	12

Coachroof and Mast	12
Anchor Locker	12
Battery Powered Windlass	12
160ft of Anchor Chain	12
Starboard Side Decks	13
Starboard Side Decks	13
Starboard Side Decks	13
Starboard Side Decks and Dodger	13
Coachroof Mast and Skylights	13
Starboard Side Decks and Dodger	13
Coachroof Mast and Skylights	14
Vang and Dodger	14
Dodger Table Winches Sheets Helm Storage Companion Way	14
Vang and Mast	14
Cockpit Dodger Table Winches Sheets Helm Storage Companion Way	14
Dodger Table Winches Sheets Helm Storage Companion Way	14
Dodger Table Winches Sheets Helm Storage Companion Way	15
Dodger Table Winches Sheets Helm Storage Companion Way	15
Dodger Table Winches Sheets Helm Storage Companion Way	15
Dodger Table Winches Sheets Helm Storage Companion Way	15
Dodger Table Winches Sheets Helm Storage Companion Way	15
Dodger Table Winches Sheets Helm Storage Companion Way	15
Dodger Table Winches Sheets Helm Storage Companion Way	15
Dodger Table Winches Sheets Helm Storage Companion Way	16
Dodger Table Winches Sheets Helm Storage Companion Way	16
Inflatable Dinghy and Tohatsu outboard engine	16
IMG_3972bb	16
Inflatable Dinghy and Tohatsu outboard engine	16
Dodger Table Winches Sheets Helm Storage Companion Way	16
Dodger Table Winches Sheets Helm Storage Companion Way	17

Dodger Table Winches Sheets Helm Storage Companion Way	17
Dodger Table Winches Sheets Helm Storage Companion Way	17
Dodger Table Winches Sheets Helm Storage Companion Way	17
Dodger Table Winches Sheets Helm Storage Companion Way	18
Companion Way Salon	18
Salon	18
Salon	18
Salon	19
Salon	19
Nav Station Chart Table	19
Galley	19
Breaker Panel	20
Chart Table Breaker Panel	20
Recent Survey	20
Salon	20
Salon	21
Forward Owners Cabin and Head	21
Forward Owners Cabin and Head	21
Forward Owners Cabin and Head	21
Forward Owners Cabin and Head	21
Forward Owners Cabin and Head	21
Forward Owners Cabin and Head	21
Forward Owners Cabin and Head	22
Salon	22
Salon Galley and Companionway	22
Galley	22
Galley	22
Galley	22
LPG Oven and Stovetop	23
Microwave Oven	23

---

Aft Cabin Head	23
Aft Cabin Head	23
Volvo Penta D2-55 Engine Compartment	24
Volvo Penta D2-55 Engine Compartment	24
Volvo Penta D2-55 Engine Compartment	24
Volvo Penta D2-55 Engine Compartment	24
Volvo Penta D2-55 Engine Compartment	24
Fresh Bottom Paint Spring 2022	24
<b>CONTACTS</b>	<b>25</b>
Contact details	25
Telephones	25
Office hours	25
Address	25

---

# SPECIFICATIONS

---

## Overview

---

Annapolis Yacht Sales introduces *Cascadia Current* to its selection of quality brokerage listings.

This 2004 Beneteau 423 was built with her owners' comfort in mind. All strength and performance above, but below decks, she's all light and beauty. Down the companionway steps, you will discover a voluminous interior design that will delight the most demanding cruising sailor. The hallmark Beneteau joinery beautifully frames a layout that boasts more storage and inviting natural light, making extended time onboard an absolute pleasure.

### ***Latest Upgrades include:***

***- 2022 Tohatsu 9.9 and North Atlantic Inflatables 9.9' Aluminum RIB***

***- New Dinghy Davits with 6:1 blocks***

***- New North Sails (125% Jib and Fully Battened Main Sail)***

***- New Mainsheet, Furling line, Main halyard***

***- Raymarine Axiom Chart Plotter***

***- Rocna anchor 55lbs***

***- 160' chain***

***- 160' rode***

***- All LED interior lights***

***- 2 x 170w Flex Sun Solar Panels***

***- Victron Smart Charge Controller***

---

## Basic Information

---

**Category:** Cruising Sailboat

**Model Year:** 2004

**Year Built:** 2003

**Country:** United States

---

## Dimensions

---

**LOA:** 43' 2" (13.16mm)**LWL:** 38' 7" (11.76mm)**LOD:** 41' 8" (12.7mm)**Beam:** 12.91**Min Draft:** 5' 7" (1.7mm)**Max Draft:** 5' 7" (1.7mm)

---

## Speed, Capacities and Weight

---

**Cruise Speed:** 7.5 Knots Kts. (9 MPH)**Cruise Speed Range:** 160**Max Speed:** 8.5 Knots Kts. (10 MPH)**Max Speed Range:** 140 Kts.**Gross Tonnage:** 24 Pounds**Water Capacity:** 154 Gallons**Holding Tank:** 44 Gal Gallons**Fuel Capacity:** 53 Gal Gallons**Fuel Consumption:** 2.3 Gal Gallons

---

## Accommodations

---

**Total Cabins:** 2**Total Berths:** 3**Sleeps:** 6**Total Heads:** 2

---

## Hull and Deck Information

---

**Hull Material:** Fiberglass**Deck Material:** Composite Fiberglass**Hull Configuration:** Bulb Keel**Hull Color:** White**Hull Designer:** Groupe Finot**Exterior Designer:** Groupe Finot/Conq**Interior Designer:** Groupe Finot/Conq

---

## Engine Information

---

**Engines:** 1

**Manufacturer:** Volvo Penta

**Engine Type:** Inboard

**Fuel Type:** Diesel



# PHOTOS

## Cruising the Chesapeake Bay in Spring



**Bow**



**Bow**



**Starboard Side**



### Rocna 55 Anchor



### Port Bow



### Starboard Bow



### Starboard Side



### Starboard Side



### Port Side



**Port Side**



**Port Side Amidship**



**Coachroof**



**Port Side Decks**



**Port Side Decks**



**Port Side Decks**



**Port Side Decks**



**Coachroof and Mast**



**Coachroof and Mast**



**Anchor Locker**



**Battery Powered Windlass**



**160ft of Anchor Chain**



**Starboard Side Decks**



**Starboard Side Decks**



**Starboard Side Decks**



**Starboard Side Decks and Dodger**



**Starboard Side Decks and Dodger**



**Coachroof Mast and Skylights**



**Coachroof Mast and Skylights**



**Vang and Dodger**



**Vang and Mast**



**Dodger Table Winches Sheets Helm Storage Companion Way**



**Cockpit Dodger Table Winches Sheets Helm Storage Companion Way**



**Dodger Table Winches Sheets Helm Storage Dodger Table Winches Sheets Helm Storage Companion Way**



**Dodger Table Winches Sheets Helm Storage Dodger Table Winches Sheets Helm Storage Companion Way**



**Dodger Table Winches Sheets Helm Storage Dodger Table Winches Sheets Helm Storage Companion Way**



**Dodger Table Winches Sheets Helm Storage  
Companion Way**



**IMG\_3972bb**



**Inflatable Dinghy and Tohatsu outboard engine**



**Inflatable Dinghy and Tohatsu outboard engine**



**Dodger Table Winches Sheets Helm Storage  
Companion Way**





**Dodger Table Winches Sheets Helm Storage Dodger Table Winches Sheets Helm Storage  
Companion Way**



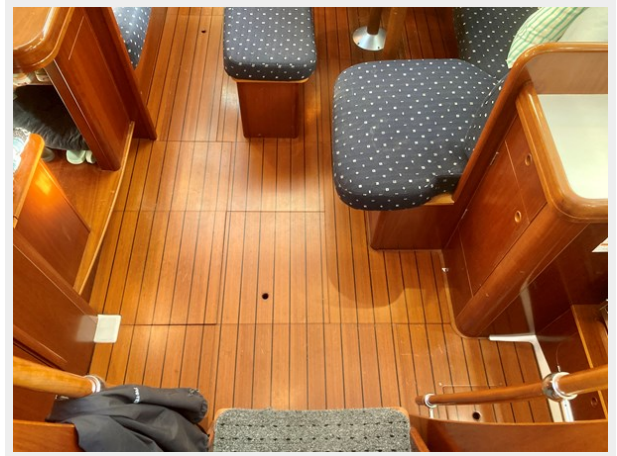
**Dodger Table Winches Sheets Helm Storage Dodger Table Winches Sheets Helm Storage  
Companion Way**



### Dodger Table Winches Sheets Helm Storage Companion Way



### Companion Way Salon



### Salon



### Salon



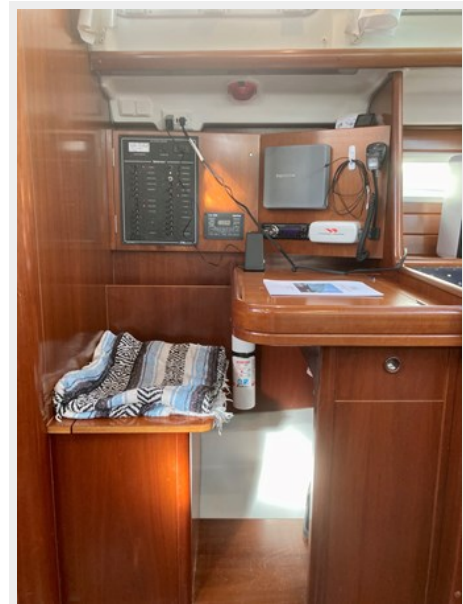
Salon



Salon



Nav Station Chart Table



Galley



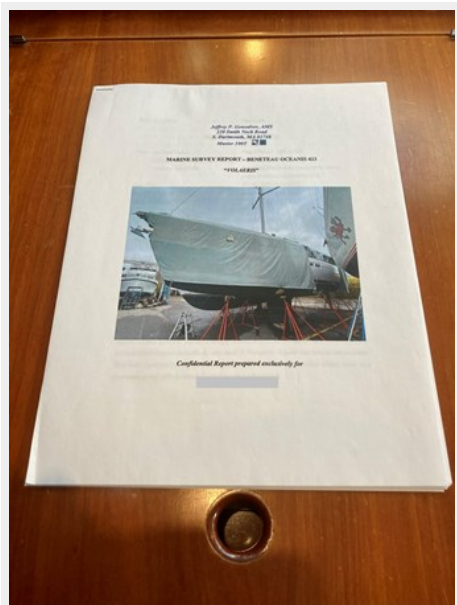
### Breaker Panel



### Chart Table Breaker Panel



### Recent Survey



### Salon



**Salon**



**Forward Owners Cabin and Head**



**Forward Owners Cabin and Head**



**Forward Owners Cabin and Head**



**Forward Owners Cabin and Head**



**Forward Owners Cabin and Head**



### Forward Owners Cabin and Head



### Salon



### Salon Galley and Companionway



### Galley



### Galley



### Galley



**LPG Oven and Stovetop**



**Microwave Oven**



**Aft Cabin Head**



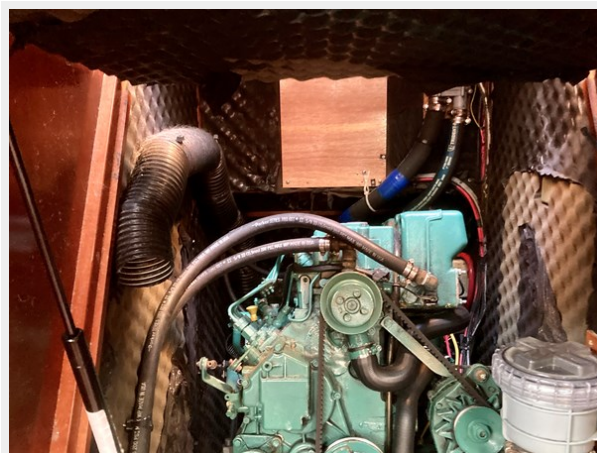
**Aft Cabin Head**



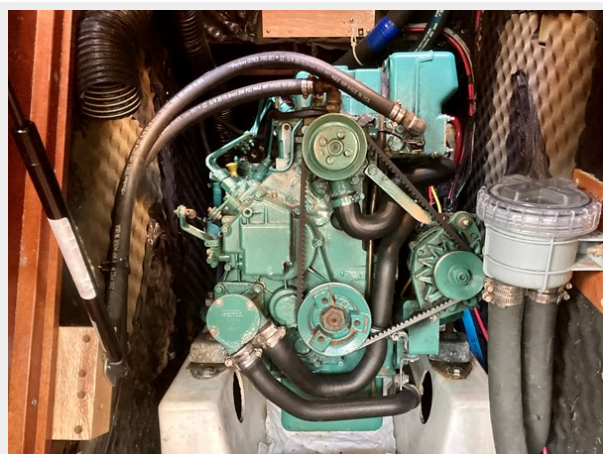
### Volvo Penta D2-55 Engine Compartment



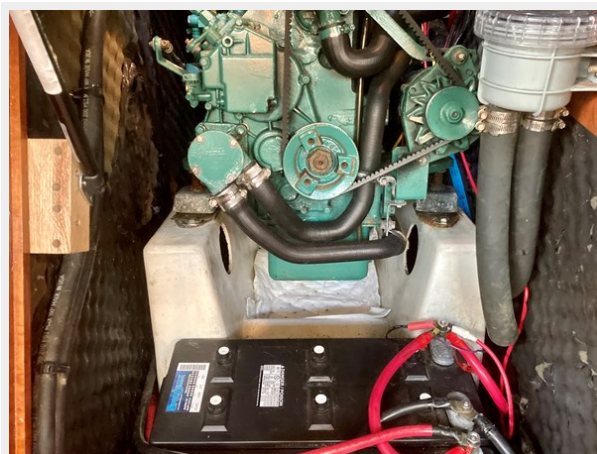
### Volvo Penta D2-55 Engine Compartment



### Volvo Penta D2-55 Engine Compartment



### Volvo Penta D2-55 Engine Compartment



### Volvo Penta D2-55 Engine Compartment



### Fresh Bottom Paint Spring 2022





# CONTACTS

---

Andrey Shestakov, leading yacht broker of the sales department of Shestakov Yacht Sales Inc. Shestakov Yacht Sales Inc., the official representative of the Miami/Fort Lauderdale FL headquarters.

## Contact details

---

Email: [andrey@shestakovyachtsales.com](mailto:andrey@shestakovyachtsales.com)

Web: [shestakovyachtsales.com/en/](http://shestakovyachtsales.com/en/)

## Telephones

---

USA: +1(954)274-4435

## Office hours

---

Monday – Saturday: **9:00 - 21:00** EDT

Sunday: **closed**

## Address

---



Harbour Towne Marina, 850 NE 3rd St,  
STE 213, Dania, FL 33004