

COCO — SILVERTON



Builder: SILVERTON

Year Built: 2006

Model: Sport Yacht

Price: PRICE ON APPLICATION

Location: United States

LOA: 42' (12.8mm)

Beam: 14.91

Max Draft: 3' 7" (1.09mm)

Our experienced yacht broker, Andrey Shestakov, will help you choose and buy a yacht that best suits your needs **Coco — SILVERTON** from **our catalogue**. Presently, at **Shestakov Yacht Sales Inc.**, we have a wide variety of yachts available on **our sale's list**. We also work in close contact with all the big **yacht manufacturers** from all over the world.

If you would like to buy a yacht **Coco — SILVERTON** or would like help answering any questions concerning purchasing, selling or chartering a yacht, please call **+1(954)274-4435**

TABLE OF CONTENTS

TABLE OF CONTENTS	2
SPECIFICATIONS	5
Overview	5
Basic Information	5
Dimensions	5
Speed, Capacities and Weight	5
Accommodations	5
Hull and Deck Information	5
Engine Information	6
PHOTOS	7
8628720_20221216094703136_1_XLARGE	7
103634_0_070320091731_1	7
8628720_20221216094627239_1_XLARGE	7
8628720_20221216094714480_1_XLARGE	7
8628720_20221216094615913_1_XLARGE	8
8628720_20221216094640409_1_XLARGE	8
8628720_20221216092000369_1_XLARGE	8
8628720_20221216092008943_1_XLARGE	8
8628720_20221216092031977_1_XLARGE	8
8628720_20221216092027384_1_XLARGE	8
8628720_20221216091955757_1_XLARGE	9
8628720_20221216092022737_1_XLARGE	9
8628720_20221216092019220_1_XLARGE	9
8628720_20221216092036960_1_XLARGE	9
8628720_20221216091952089_1_XLARGE	9
8628720_20221216091947626_1_XLARGE	9
8628720_20221216092041112_1_XLARGE	10
8628720_20221216092003853_1_XLARGE	10

8628720_20221216092052282_1_XLARGE	10
8628720_20221216092145662_1_XLARGE	10
8628720_20221216092102562_1_XLARGE	10
8628720_20221216092120004_1_XLARGE	10
8628720_20221216092115332_1_XLARGE	11
8628720_20221216092110986_1_XLARGE	11
8628720_20221216092132001_1_XLARGE	11
8628720_20221216092106442_1_XLARGE	11
8628720_20221216092211894_1_XLARGE	11
8628720_20221216092202321_1_XLARGE	11
8628720_20221216092215982_1_XLARGE	12
8628720_20221216092225106_1_XLARGE	12
8628720_20221216092230438_1_XLARGE	12
8628720_20221216092235680_1_XLARGE	12
8628720_20221216092247395_1_XLARGE	12
8628720_20221216092259095_1_XLARGE	12
8628720_20221216092315855_1_XLARGE	13
8628720_20221216092305156_1_XLARGE	13
8628720_20221216092220447_1_XLARGE	13
8628720_20221216092320267_1_XLARGE	13
8628720_20221216092329860_1_XLARGE	13
8628720_20221216092334683_1_XLARGE	13
8628720_20221216092339263_1_XLARGE	14
8628720_20221216092325600_1_XLARGE	14
8628720_20221216092343932_1_XLARGE	14
8628720_20221216092413533_1_XLARGE	14
8628720_20221216092409300_1_XLARGE	14
8628720_20221216092355436_1_XLARGE	14
8628720_20221216092348357_1_XLARGE	15

CONTACTS	16
Contact details	16
Telephones	16
Office hours	16
Address	16

SPECIFICATIONS

Overview

A beautiful example of a convertible yacht with the amenities of a sedan bridge. Two Staterooms with queen berths, **Air Conditioned Flybridge** & Interior, Raymarine GPS/Radar/Fishfinder, **Flo-Scans**, 8kw Fischer Panda mini 8 generator.

Basic Information

Category: Sport Yacht

Sub Category: Convertible

Model Year: 2006

Year Built: 2006

Country: United States

Dimensions

LOA: 42' (12.8mm)

Beam: 14.91

Max Draft: 3' 7" (1.09mm)

Speed, Capacities and Weight

Water Capacity: 200 Gallons

Holding Tank: 40 Gal Gallons

Fuel Capacity: 524 Gal Gallons

Accommodations

Total Cabins: 2

Hull and Deck Information

Hull Material: Fiberglass

Engine Information

Engines: 2

Manufacturer: Cummins

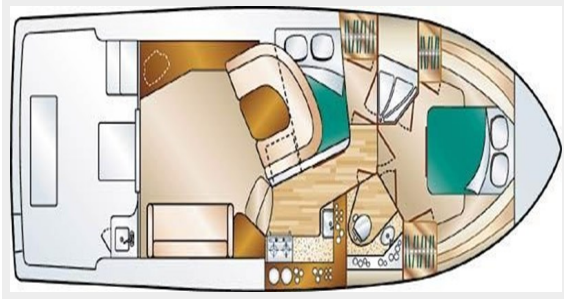
Engine Type: Inboard

Fuel Type: Diesel

PHOTOS

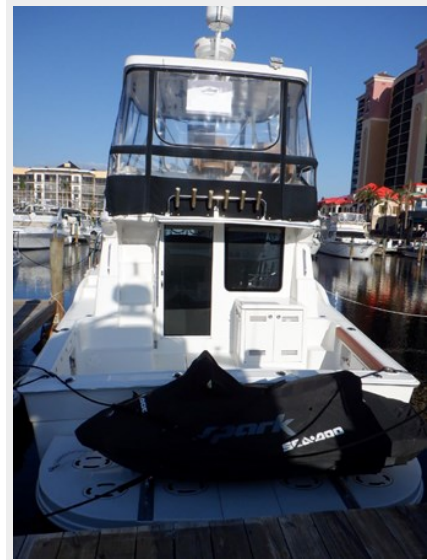
8628720_20221216094703136_1_XLARGE

103634_0_070320091731_1



8628720_20221216094627239_1_XLARGE

8628720_20221216094714480_1_XLARGE



8628720_20221216094615913_1_XLARGE

8628720_20221216094640409_1_XLARGE



8628720_20221216092000369_1_XLARGE 8628720_20221216092008943_1_XLARGE



8628720_20221216092031977_1_XLARGE 8628720_20221216092027384_1_XLARGE



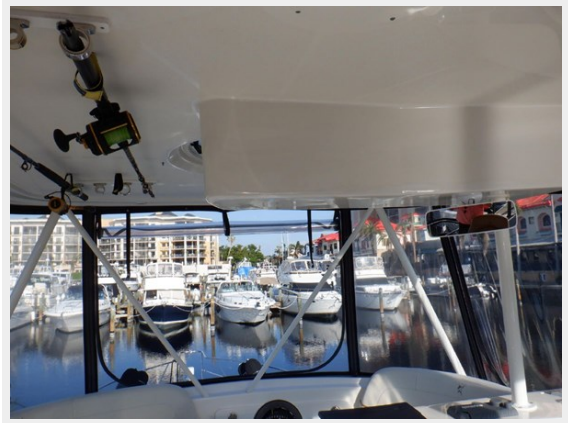
8628720_20221216091955757_1_XLARGE 8628720_20221216092022737_1_XLARGE



8628720_20221216092019220_1_XLARGE



8628720_20221216092036960_1_XLARGE



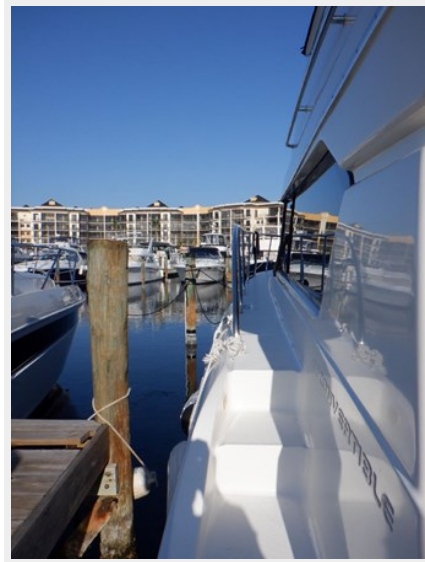
8628720_20221216091952089_1_XLARGE 8628720_20221216091947626_1_XLARGE



8628720_20221216092041112_1_XLARGE 8628720_20221216092003853_1_XLARGE



8628720_20221216092052282_1_XLARGE 8628720_20221216092145662_1_XLARGE



8628720_20221216092102562_1_XLARGE 8628720_20221216092120004_1_XLARGE



8628720_20221216092115332_1_XLARGE 8628720_20221216092110986_1_XLARGE



8628720_20221216092132001_1_XLARGE

8628720_20221216092106442_1_XLARGE



8628720_20221216092211894_1_XLARGE 8628720_20221216092202321_1_XLARGE



8628720_20221216092215982_1_XLARGE 8628720_20221216092225106_1_XLARGE



8628720_20221216092230438_1_XLARGE 8628720_20221216092235680_1_XLARGE



8628720_20221216092247395_1_XLARGE 8628720_20221216092259095_1_XLARGE



8628720_20221216092315855_1_XLARGE

8628720_20221216092305156_1_XLARGE



8628720_20221216092220447_1_XLARGE 8628720_20221216092320267_1_XLARGE



8628720_20221216092329860_1_XLARGE 8628720_20221216092334683_1_XLARGE



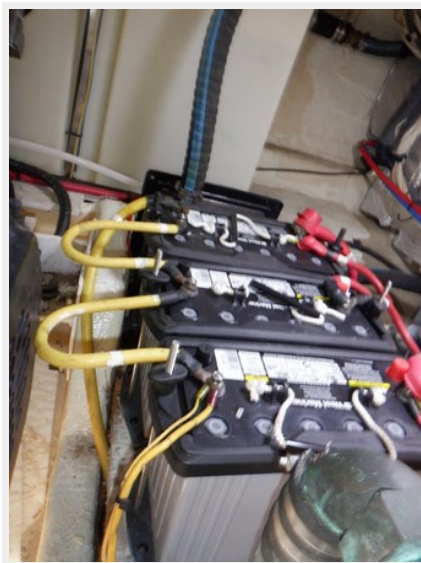
8628720_20221216092339263_1_XLARGE 8628720_20221216092325600_1_XLARGE



8628720_20221216092343932_1_XLARGE 8628720_20221216092413533_1_XLARGE



8628720_20221216092409300_1_XLARGE



8628720_20221216092355436_1_XLARGE



8628720_20221216092348357_1_XLARGE



CONTACTS

Andrey Shestakov, leading yacht broker of the sales department of Shestakov Yacht Sales Inc. Shestakov Yacht Sales Inc., the official representative of the Miami/Fort Lauderdale FL headquarters.

Contact details

Email: **andrey@shestakovyachtsales.com**

Web: shestakovyachtsales.com/en/

Telephones

USA: **+1(954)274-4435**

Office hours

Monday – Saturday: **9:00 - 21:00** EDT

Sunday: **closed**

Address



Harbour Towne Marina, 850 NE 3rd St, STE 213, Dania, FL 33004