

## ANNIE — NAUTOR'S SWAN



**Builder:** NAUTOR'S SWAN

**Year Built:** 2018

**Model:** Cruising or Racing Sailboat

**Price:** PRICE ON APPLICATION

**Location:** Finland

**LOA:** 54' 1" (16.48m)

**Beam:** 15.58

**Min Draft:** 4' 8" (1.4m)

**Max Draft:** 12' 2" (3.7m)

Our experienced yacht broker, Andrey Shestakov, will help you choose and buy a yacht that best suits your needs **Annie — NAUTOR'S SWAN** from our catalogue. Presently, at Shestakov Yacht Sales Inc., we have a wide variety of yachts available on our sale's list. We also work in close contact with all the big yacht manufacturers from all over the world.

If you would like to buy a yacht **Annie — NAUTOR'S SWAN** or would like help answering any questions concerning purchasing, selling or chartering a yacht, please call **+1(954)274-4435**

# TABLE OF CONTENTS

TABLE OF CONTENTS	2
SPECIFICATIONS	5
Basic Information	5
Dimensions	5
Speed, Capacities and Weight	5
Accommodations	5
Hull and Deck Information	5
Engine Information	5
PHOTOS	6
Swan 54-2	6
Swan 54-3	6
Swan 54-7	6
Swan 54-4	6
Swan 54-12	6
Swan-1	6
Swan-2	7
Swan-3	7
Swan-4	7
Swan-5	7
Swan-6	7
Swan-7	7
Swan-8	8
Swan-9	8
Swan-10	8
Swan-11	8
Swan-12	8
Swan-13	8
Swan-14	9

---

Swan-15	9
Swan-16	9
Swan-17	9
Swan-18	9
Swan-19	9
Swan-20	10
Swan-21	10
Swan-23	10
Swan-22	10
Swan-24	11
Swan-25	11
Swan-26	11
Swan-27	11
Swan-29	12
Swan-28	12
Swan-30	12
Swan-31	12
Swan-32	13
Swan-33	13
Swan-34	13
Swan-35	13
Swan-37	14
Swan-36	14
Swan-38	14
Swan-39	14
Swan-40	15
CONTACTS	16
Contact details	16
Telephones	16

---

Office hours	16
Address	16

---

# SPECIFICATIONS

---

## Basic Information

---

**Category:** Cruising or Racing Sailboat      **Model Year:** 2018

**Year Built:** 2018      **Country:** Finland

## Dimensions

---

**LOA:** 54' 1" (16.48mm)      **LWL:** 47' 3" (14.4mm)

**Beam:** 15.58      **Min Draft:** 4' 8" (1.4mm)

**Max Draft:** 12' 2" (3.7mm)

## Speed, Capacities and Weight

---

**Water Capacity:** 630 Gallons

**Fuel Capacity:** 130.77 Gal Gallons

## Accommodations

---

**Total Cabins:** 4

**Total Heads:** 2

## Hull and Deck Information

---

**Hull Material:** GRP

**Hull Color:** White

## Engine Information

---

**Engines:** 1

**Manufacturer:** Yanmar

**Engine Type:** Inboard

**Fuel Type:** Diesel

# PHOTOS

Swan 54-2



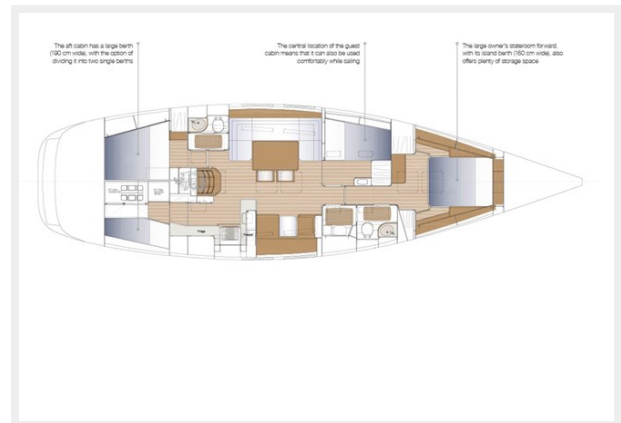
Swan 54-3



Swan 54-4



Swan 54-7



Swan 54-12



Swan-1



**Swan-2**



**Swan-3**



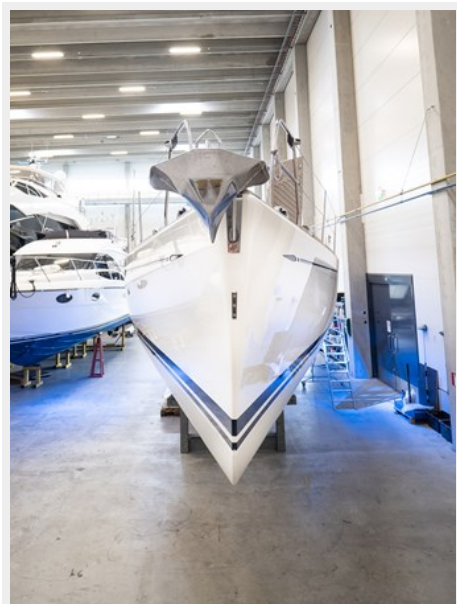
**Swan-4**



**Swan-5**



**Swan-6**



**Swan-7**



**Swan-8**



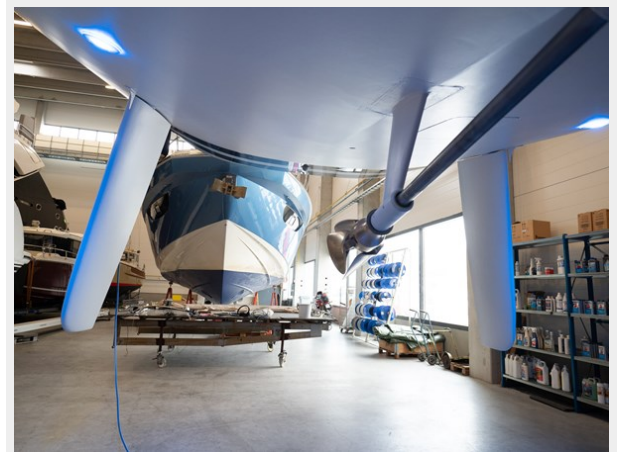
**Swan-9**



**Swan-10**



**Swan-11**



**Swan-12**



**Swan-13**





Swan-14



Swan-15



Swan-16



Swan-17



Swan-18



Swan-19



**Swan-20**



**Swan-21**



**Swan-23**



**Swan-22**



**Swan-24**



**Swan-25**



**Swan-26**



**Swan-27**



Swan-28



Swan-29



Swan-30



Swan-31



**Swan-32**



**Swan-33**



**Swan-34**



**Swan-35**



Swan-36



Swan-37



Swan-38



Swan-39



## Swan-40



---

# CONTACTS

---

Andrey Shestakov, leading yacht broker of the sales department of Shestakov Yacht Sales Inc. Shestakov Yacht Sales Inc., the official representative of the Miami/Fort Lauderdale FL headquarters.

---

## Contact details

---

Email: [andrey@shestakovyachtsales.com](mailto:andrey@shestakovyachtsales.com)

Web: [shestakovyachtsales.com/en/](http://shestakovyachtsales.com/en/)

---

## Telephones

---

USA: +1(954)274-4435

---

## Office hours

---

Monday – Saturday: **9:00 - 21:00** EDT

Sunday: **closed**

---

## Address

---



Harbour Towne Marina, 850 NE 3rd St,  
STE 213, Dania, FL 33004