

PATIENCE — BENETTI



Builder: BENETTI

Year Built: 2012

Model: Motor Yacht

Price: PRICE ON APPLICATION

Location: United States

LOA: 132' (40.23m)

Beam: 26

Max Draft: 8' (2.44m)

Cruise Speed: 12 Knots Kts. (14 MPH)

Max Speed: 15 Knots Kts. (17 MPH)

Our experienced yacht broker, Andrey Shestakov, will help you choose and buy a yacht that best suits your needs **PATIENCE — BENETTI** from our catalogue. Presently, at Shestakov Yacht Sales Inc., we have a wide variety of yachts available on our sale's list. We also work in close contact with all the big yacht manufacturers from all over the world.

If you would like to buy a yacht **PATIENCE — BENETTI** or would like help answering any questions concerning purchasing, selling or chartering a yacht, please call **+1(954)274-4435**

TABLE OF CONTENTS

TABLE OF CONTENTS	2
SPECIFICATIONS	4
Basic Information	4
Dimensions	4
Speed, Capacities and Weight	4
Accommodations	4
Hull and Deck Information	4
Engine Information	5
PHOTOS	6
Port Side	6
Bridge Deck Aft	6
Bridge Deck Aft 2	6
Bridge Deck Aft 3	6
Bridge Deck Aft 3	6
Bridge 3	7
Bow Seating	7
Boww	7
Bow	7
Bow Jacuzzi	7
Bridge	7
Engine Room	8
Staircase	8
Galley	8
Engine Room	8
Main Deck Aft	9
Main Deck Aft	9
Main Salon	9
Main Salon	9

Main Salo	9
Main Salon	9
Main Salon	10
Master Office	10
Master Suite	10
Master	10
Master	10
Starboard Aft Guest	10
Starboard Aft Guest	11
Starboard Forward Guest	11
Starboard Forward Guest	11
Sun Deck	11
Sun Deck	12
Sun Deck	12
Sun Deck	12
Sun Deck	12
Hallway	13
Stair to Bridge Deck	13
Stbd Side Deck	13
CONTACTS	14
Contact details	14
Telephones	14
Office hours	14
Address	14

SPECIFICATIONS

Basic Information

Category: Motor Yacht

Model Year: 2012

Year Built: 2012

Refit Type: Engineering

Country: United States

Dimensions

LOA: 132' (40.23mm)

Beam: 26

Max Draft: 8' (2.44mm)

Speed, Capacities and Weight

Cruise Speed: 12 Knots Kts. (14 MPH)

Cruise Speed Range: 3500

Max Speed: 15 Knots Kts. (17 MPH)

Gross Tonnage: 346 Pounds

Water Capacity: 7600 Gallons

Fuel Capacity: 12416.09 Gal Gallons

Accommodations

Total Cabins: 5

Sleeps: 10

Crew Cabin: 7

Hull and Deck Information

Hull Material: GRP

Deck Material: Teak

Exterior Designer: Stefano Righini

Interior Designer: Francois Zuretti

Engine Information

Engines: 2

Manufacturer: MTU

Engine Type: Inboard

Fuel Type: Diesel

PHOTOS

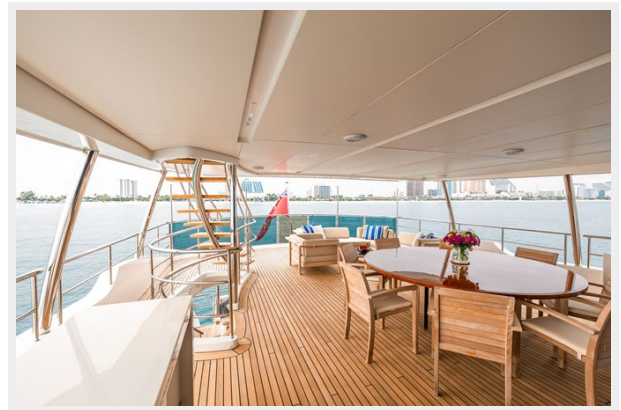
Port Side



Bridge Deck Aft



Bridge Deck Aft 2



Bridge Deck Aft 3



Bridge Deck Aft 3



Bridge 3



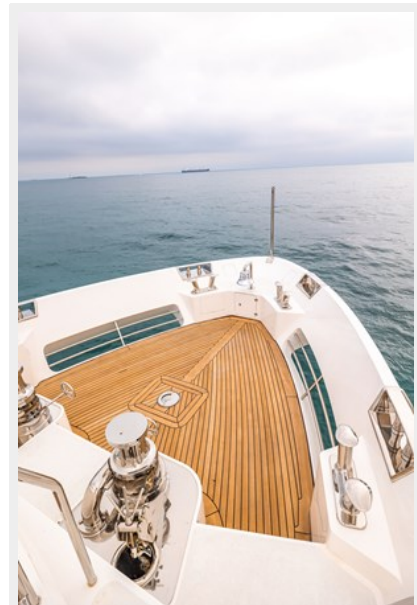
Bow Seating



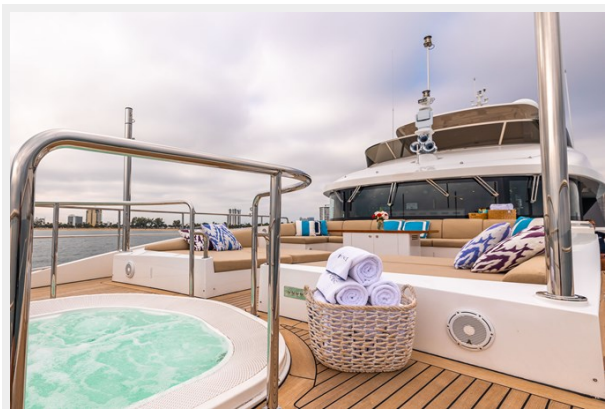
Boww



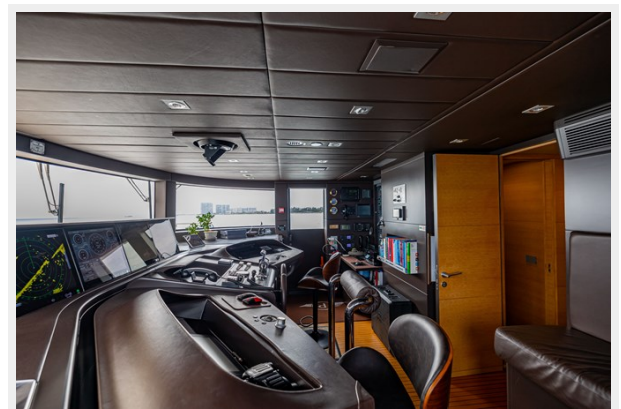
Bow



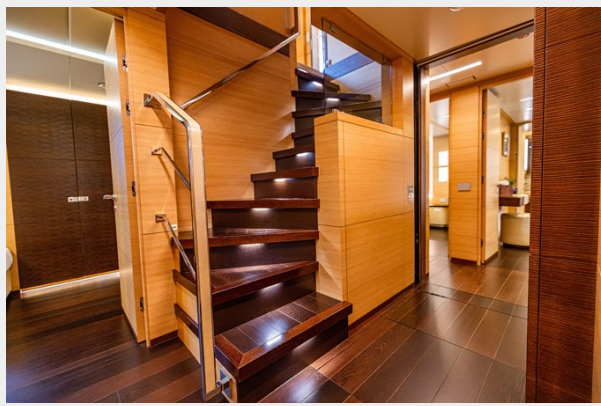
Bow Jacuzzi



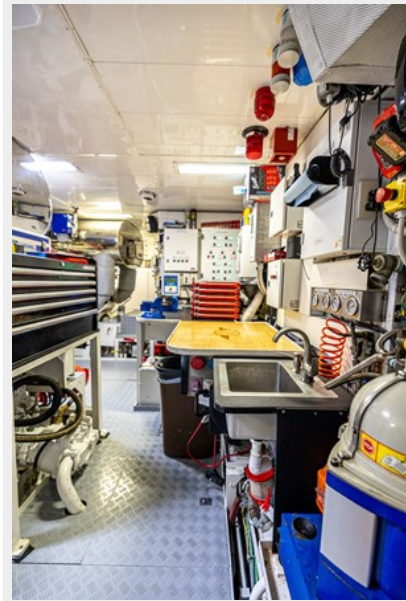
Bridge



Staircase



Engine Room



Engine Room



Galley



Main Deck Aft



Main Deck Aft



Main Salon



Main Salon



Main Salo



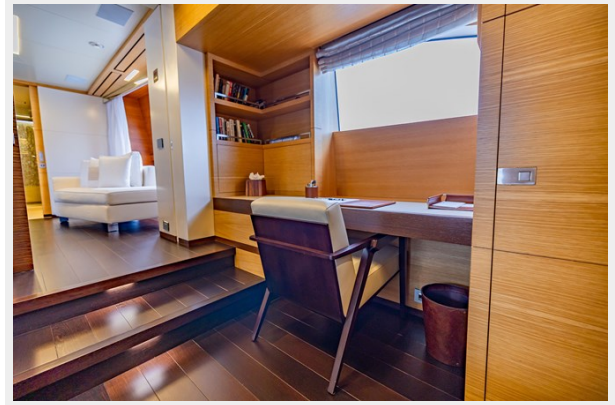
Main Salon



Main Salon



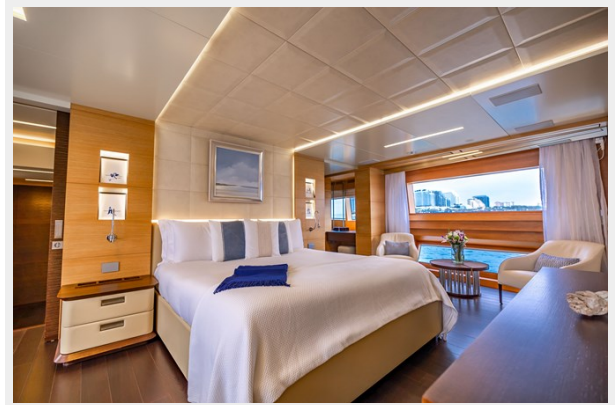
Master Office



Master Suite



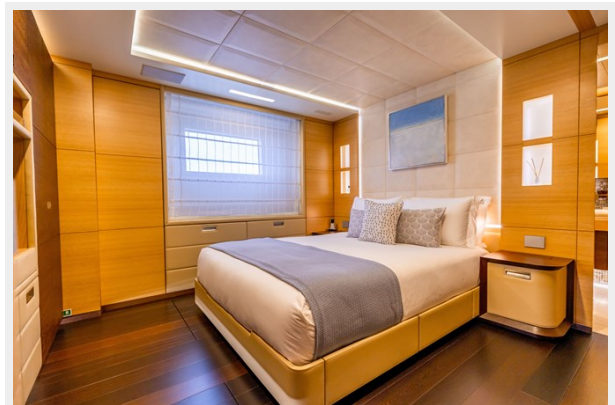
Master



Master



Starboard Aft Guest



Starboard Aft Guest



Starboard Forward Guest



Starboard Forward Guest



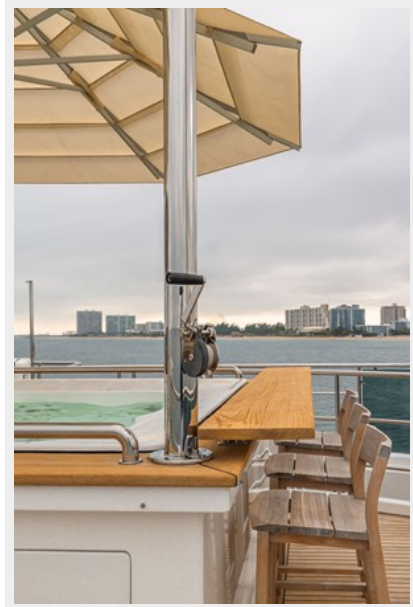
Sun Deck



Sun Deck

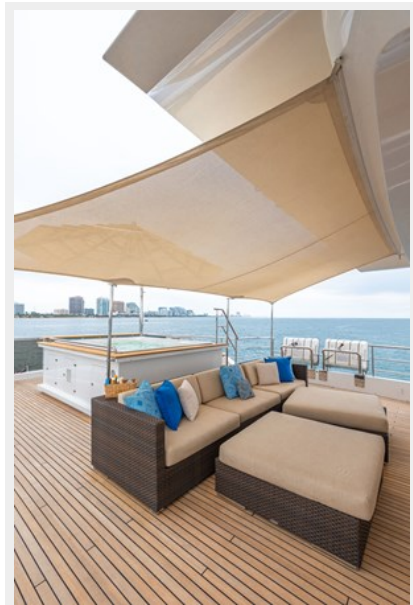
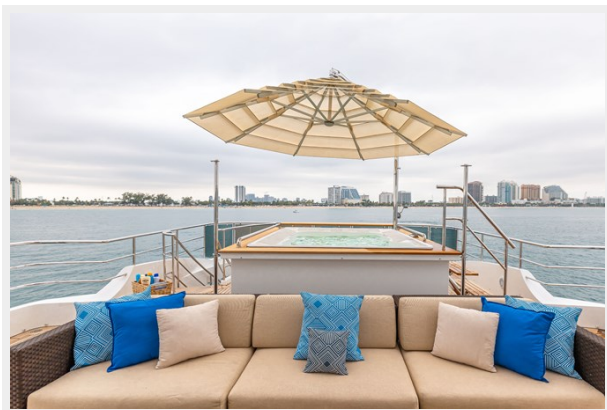


Sun Deck



Sun Deck

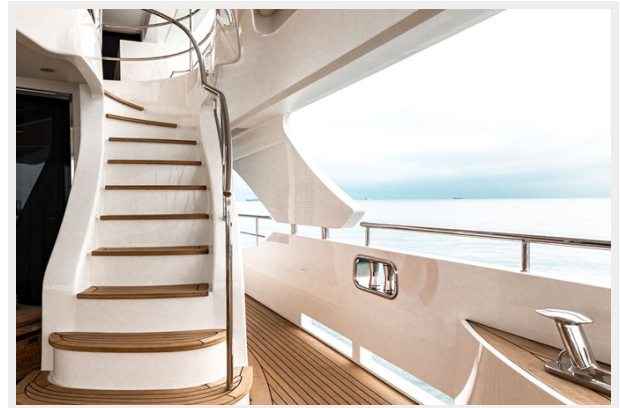
Sun Deck



Hallway



Stair to Bridge Deck



Stbd Side Deck



CONTACTS

Andrey Shestakov, leading yacht broker of the sales department of Shestakov Yacht Sales Inc. Shestakov Yacht Sales Inc., the official representative of the Miami/Fort Lauderdale FL headquarters.

Contact details

Email: andrey@shestakovyachtsales.com

Web: shestakovyachtsales.com/en/

Telephones

USA: +1(954)274-4435

Office hours

Monday – Saturday: **9:00 - 21:00** EDT

Sunday: **closed**

Address



Harbour Towne Marina, 850 NE 3rd St,
STE 213, Dania, FL 33004