

2005 RIVIERA M430 SPORT CRUISER — RIVIERA



Builder: [RIVIERA](#)

LOA: 47' 8" (14.53mm)

Year Built: 2005

Beam: 12.33

Model: cruiser

Price: PRICE ON APPLICATION

Location: United States

Our experienced yacht broker, Andrey Shestakov, will help you choose and buy a yacht that best suits your needs 2005 Riviera M430 Sport Cruiser — RIVIERA from our catalogue. Presently, at Shestakov Yacht Sales Inc., we have a wide variety of yachts available on our sale's list. We also work in close contact with all the big yacht manufacturers from all over the world.

If you would like to buy a yacht 2005 Riviera M430 Sport Cruiser — RIVIERA or would like help answering any questions concerning purchasing, selling or chartering a yacht, please call +1(954)274-4435

TABLE OF CONTENTS

TABLE OF CONTENTS	2
SPECIFICATIONS	3
Overview	3
Basic Information	3
Dimensions	3
Speed, Capacities and Weight	3
Accommodations	4
Hull and Deck Information	4
Engine Information	4
PHOTOS	5
CONTACTS	9
Contact details	9
Telephones	9
Office hours	9
Address	9

SPECIFICATIONS

Overview

If you really want to get away from it all (and want to do it with a dash of panache) your boat has come in. The M430 is designed and equipped to give you days and nights of ease and indulgence... and as a spacious two cabin/five berth cruiser, there's plenty of room for family and friends. If you're after a quick getaway, that sleek hull is a hydrodynamic masterpiece: quick to plane, wonderfully responsive yet reassuringly stable. And suppose you're someone with an eye for detail. In that case, you'll appreciate the way the semi ladder folds into the platform when not in use, the way the door to below deck glides as it slides open, and the generous entertaining area - with its L-shaped lounge and dinette table - behind the helm station. First launched in 2001, the M430 has proved to be a prevalent model. It has a great track record that just keeps getting better, with ongoing refinements.

- Multi-point fuel injection for reliability and safety
- Fresh-water cooling for longer life
- Ergonomically-designed helm station
- Full bimini and clears
- Fridge and ice-maker in the cockpit
- Reverse cycle air-conditioned cabins and saloon

Basic Information

Category: cruiser

Sub Category: Sport Cruiser

Model Year: 2005

Year Built: 2005

Country: United States

Dimensions

LOA: 47' 8" (14.53mm)

Beam: 12.33

Speed, Capacities and Weight

Water Capacity: 81 Gallons

Fuel Capacity: 325 Gal Gallons

Accommodations

Total Heads: 1

Hull and Deck Information

Hull Material: Fiberglass

Engine Information

Engines: 2

Manufacturer: Mercruiser

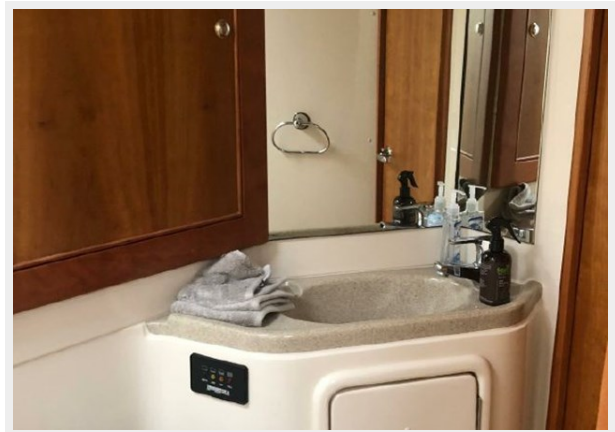
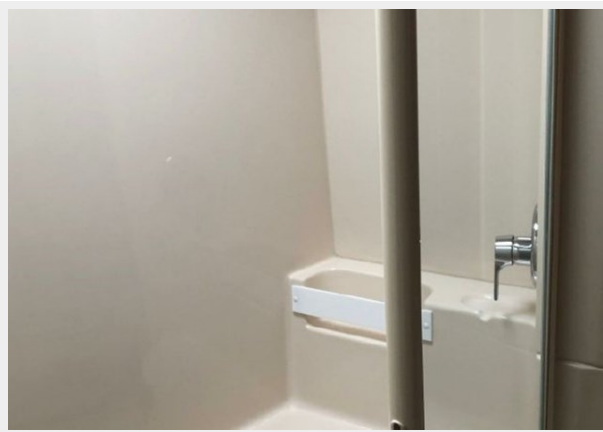
Engine Type: Inboard

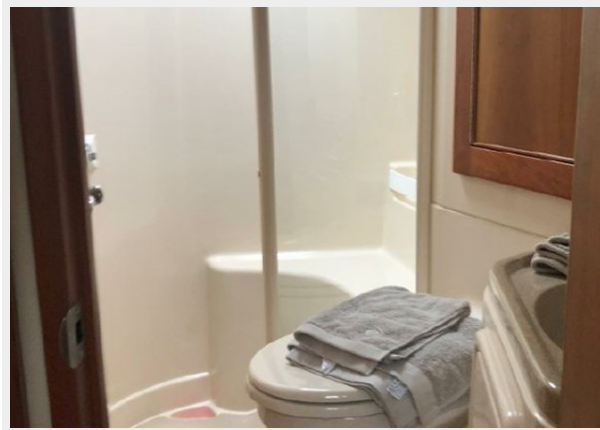
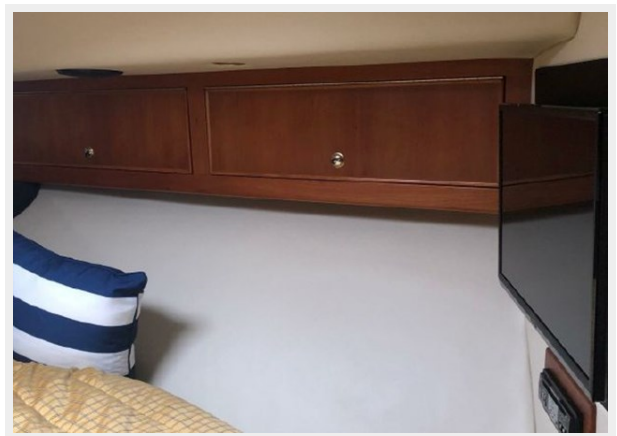
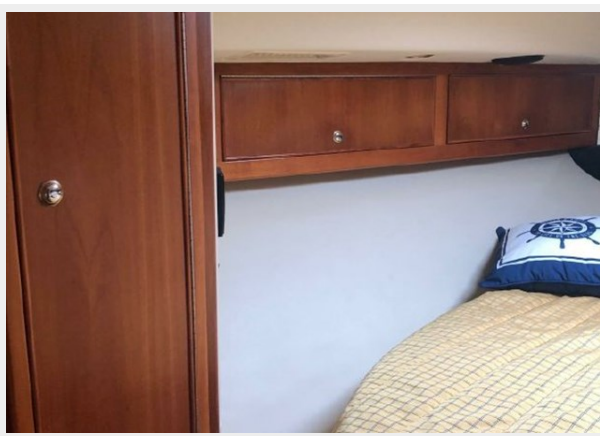
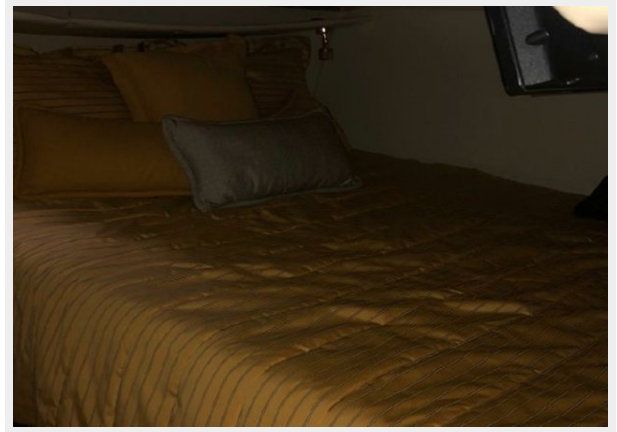
Fuel Type: Gas

PHOTOS









CONTACTS

Andrey Shestakov, leading yacht broker of the sales department of Shestakov Yacht Sales Inc. Shestakov Yacht Sales Inc., the official representative of the Miami/Fort Lauderdale FL headquarters.

Contact details

Email: andrey@shestakovyachtsales.com

Web: shestakovyachtsales.com/en/

Telephones

USA: +1(954)274-4435

Office hours

Monday – Saturday: **9:00 - 21:00** EDT

Sunday: **closed**

Address



Harbour Towne Marina, 850 NE 3rd St,
STE 213, Dania, FL 33004