

2003 CARVER 570 VOYAGER PILOTHOUSE — CARVER



Судостроитель: CARVER

Год постройки: 2003

Модель: Моторная яхта

Цена: ЦЕНА ЯХТЫ ПО ЗАПРОСУ

Местонахождение: United States

Длина общая: 59' (17.98mm)

Ширина: 15.33

Макс. осадка: 4' 9" (1.45mm)

Купить 2003 Carver 570 Voyager Pilothouse — CARVER а также выбрать подходящую вам яхту из нашего каталога яхт вам поможет опытный яхтенный брокер Андрей Шестаков. На сегодняшний день компания Shestakov Yacht Sales Inc. имеет большое количество яхт в собственном списке продаж, а также тесно сотрудничает со всеми крупными яхтенными производителями по всему миру.

Для того чтобы купить яхту 2003 Carver 570 Voyager Pilothouse — CARVER а также проконсультироваться по любому вопросу связанному с покупкой, продажей, чартером яхт позвоните по телефону **+7(918)465-66-44**.

ОГЛАВЛЕНИЕ

ОГЛАВЛЕНИЕ	2
ХАРАКТЕРИСТИКИ	3
Обзор	3
Основная информация	6
Размеры	6
Скорость, вместимость и масса	6
Размещение	7
Корпус и палуба	7
Информация о двигателе	7
ФОТОГРАФИИ	8
КОНТАКТЫ	16
Контактная информация	16
Телефоны	16
Время работы	16
Адрес	16

ХАРАКТЕРИСТИКИ

Обзор

Perfect fresh oil samples available. MUST BE SEEN FRESHWATER ONLY ... BOW AND STERN THRUSTERS, NEW ENCLOSURE, NEW RAY MARINE ELECTRONICS, LOWER HELM, DAVIT, UPGRADED TVS, BOW AND STERN SHORE POWER, FRESH 5 COAT BOTTOM JOB THIS ONE IS CLEAN, LOADED AND TURN KEY. Optional Freedom Lift available for \$25000 Carver has successfully earned the right to boast as "The World Leader In Luxury Cruising Yachts", with an unmatched combination of luxury, comfort, thoughtful design and cruising economy found in the 570 Voyager Pilothouse. This yacht features expansive living areas, three private staterooms and the all-weather cruising convenience of both a spacious bridgedeck and secure pilothouse. This yacht includes some of Carver's finest touches and top-notch cruising accessories. EQUIPMENT HIGHLIGHTS INCLUDE:

- PILOTHOUSE & BRIDGE CONTROL STATIONS WITH FULL ELECTRONICS
- FULL FLYBRIDGE HARDTOP
- ELECTRIC DINGHY DAVIT
- BRIDGE FRIDGE
- WASHER, DRYER
- BOW THRUSTER and STERN THRUSTER

... and much more! Exterior & Interior Accommodations Carver's Voyager Pilothouse Series combines the serious all-weather cruising capabilities of a pilothouse motoryacht with delightful entertaining and living areas. Not only spacious, but thoughtfully designed, the 570 Voyager provides an abundance of comfort and versatility. TOPSIDE The 570 Voyager features an expansive flybridge and includes the optional full flybridge hardtop, providing outstanding shelter for the comfortable cruising accommodations up top. The bridgedeck is accessed either from the pilothouse itself, or via a stairway from the cockpit. An impressively designed console includes Volvo electronic controls, a sporty gauge cluster and repeating electronics for full navigational capabilities, with a comfortable swivel captain's seat at the wheel. A double-wide companion seat is just aft of the captain's seat and will swivel to face aft when desired, then joining with the wrap-around portside lounge to form a generous seating group. To starboard, find a wet bar with storage and TV. The elongated bridge also accommodates an electric davit and tender, fully aft of the seating area. SALON & PILOTHOUSE LEVEL The salon is entered via a stainless steel slider from the cockpit and the pilothouse is also accessible through a starboard deck door. Enter the salon aft and you will be warmed by the soft cherry finish, highlighted with granite countertops and attractive blinds and accent pillows. The portside of the salon features the video center and a plush sofa. Opposite, to starboard, find an elongated L-shaped lounge, with built-in incliners and hi-lo table. The galley is forward and open to the salon, with ample cabinet space, under-counter side-by-side fridge & freezer, hardwood floor and granite tops. Just a few steps rise to the pilothouse, a nearly-space-age environment well-suited to commanding the

cruise under any conditions. A black leather captain's chair includes built-in joystick for the Raymarine autopilot and affords easy reach for the overhead electronics console and all controls. The captain is flanked by another wrap-around lounge and the bridge stairway is aft of the captain's chair.

STATEROOM LEVEL The stateroom level is accessed by a starboard companionway descending forward from the pilothouse. The guest/day head is at the base of those steps, to starboard and includes a spacious stall shower, head & vanity, with access either from the companionway or the guest stateroom, forward. The guest bunkroom is opposite the head, to port, with adult-sized bunks, hanging locker & nightstand. The forward VIP suite includes dual hanging lockers, queen island berth with innerspring mattress and built-in TV-VCR. The master suite is aft from the companionway and is, in every sense, ultimately luxurious. This suite also includes a queen island berth with innerspring mattress, with his & hers nightstands to each side. You will enjoy the abundance of open floorspace and headroom, plus three cedar-lined hanging lockers and a five-drawer dresser. As is the entire interior, the master suite is stunningly decorated with reach cherry, granite tops, well-placed accent lighting and mirrors. Opposite the master berth, just one step up from floor level, is a uniquely designed vanity area, with enclosed head to one side and tub & shower to the other. One stateroom storage compartment also houses the Malber washer & dryer units.

- AIR CONDITIONING W/ REVERSE CYCLE HEAT, 4 UNITS
- PASSIVE FRESH AIR SYSTEM
- SALON DRAPES, AFT
- COORDINATED CHERRY-FINISH SALON BLINDS
- 2 - SNACK BAR STOOLS
- FORWARD CABIN DECK VENT HATCH (VIP SUITE)
- TV ANTENNA & CABLE INLET

SALON AUDIO & VIDEO:

- HARMAN KARDON AVR 320 TUNER-AMP W/ 5-DISC DVD-CD CHANGER
- BOSE SURROUND SOUND
- PANASONIC TV WITH PANASONIC VHS

STATEROOM AUDIO & VIDEO:

- PANASONIC 13" TV/VHS VIP SUITE
- PANASONIC 19" TV W/ VHS, MASTER
- PANASONIC AM-FM-CASSETTE W/ 5-DISC CHANGER, MASTER

Galley, Head & Systems

- PRINCESS 3-BURNER ELECTRIC STOVE
- PRINCESS ELECTRIC OVEN
- SHARP CAROUSEL CONVECTION MICROWAVE
- SIDE-BY-SIDE UNDER-COUNTER REFRIGERATOR & FREEZER
- GALLEY EXHAUST VENT
- BLACK & DECKER SPACEMAKER COFFEEMAKER

- DISHWASHER
- JENN-AIR GRILL, BRIDGE
- WET BAR W/ NORCOLD DUAL VOLTAGE-REFRIGERATOR, BRIDGE
- WATER TANK LEVEL MONITOR
- SHORE WATER INLET
- 20G. HOT WATER HEATER
- VACU-FLUSH HEADS W/ 2 -REMOTE HOLDING TANKS
- HOLDING TANK LEVEL MONITORS
- STALL SHOWERS, BOTH HEADS
- SWIMMERS' SHOWER AFT
- MALBER WASHER
- MALBER DRYER

Electronics & Accessories

- VIDEO MONITOR, AFT DOCKING AREA, FROM PILOTHOUSE
- RAYMARINE VHFS W/ HANDSETS, UPPER & LOWER STATIONS
- RAYMARINE TRIDATA DEPTH-SPEED-LOG, UPPER & LOWER STATIONS
- 2 - RITCHIE COMPASS
- RAYMARINE AP 650 AUTOPILOT W/ BRIDGE REMOTE & PILOTHOUSE JOYSTICK
- VOLVO ELECTRONIC CONTROLS AND SYNCHRONIZER
- BOW THRUSTER
- COCKPIT CONTROLS
- REMOTE SPOTLIGHT
- RUDDER ANGLE INDICATOR
- TRIM TABS
- 3 - WINDSHIELD WIPERS
- KENWOOD AM-FM-CD, BRIDGE

Electrical

- 50 AMP 125/250 SHORE POWER
- GLENDENNING CABLEMASTER W/ CORD
- CHARLES ISOBOOST TRANSFORMER
- CHARLES IQ2600 12V INVERTER/CHARGER
- CHARLES 20 AMP CHARGER, ENGINES & GEN
- CHARLES 24V CHARGER, BOW THRUSTER
- 9 BATTERIES W/ SWITCHES
- ONAN GENSET

Deck, Mooring Gear & Additional Equipment

- LARGE SWIM PLATFORM W/ BOARDING LADDER & TRANSOM STORAGE ACCESS
- TRANSOM DOOR
- COCKPIT BENCH SEAT W/ STORAGE

- ANCHOR ROLLER
- ANCHOR LOCKER W/ WASHDOWN
- MAXWELL WINDLASS
- GALVANIZED PLOW ANCHOR W/ CHAIN
- FORWARD FENDER LOCKERS, 4 - FENDERS
- DOCK LINES, RING BUOY
- LIFE JACKETS, FLARE KIT
- FRESH WATER & RAW WATER WASHDOWNS, AFT
- FLYBRIDGE HARDTOP W/ ENCLOSURE
- BRIDGE & COCKPIT CARPET
- FOREDECK SUN LOUNGE PAD
- DRIPLESS SHAFT LOGS
- ENGINE ROOM LIGHTING
- OIL CHANGE SYSTEM, ENGINES & GENSET
- AFT DOCKING LIGHTS
- ELECTRIC MULTIFUNCTION DAVIT FOR TENDER

Основная информация

Тип судна: Моторная яхта

Модельный год: 2003

Год постройки: 2003

Страна: United States

Размеры

Длина общая: 59' (17.98mm)

Ширина: 15.33

Макс. осадка: 4' 9" (1.45mm)

Скорость, вместимость и масса

Вместимость воды: 200 Gallons

Вместимость сточного бака: 100 Gal
Gallons

Объем топливного бака: 800 Gal Gallons

Размещение

Всего коек: 8

Всего ком. состава: 2

Корпус и палуба

Материал корпуса: Fiberglass

Информация о двигателе

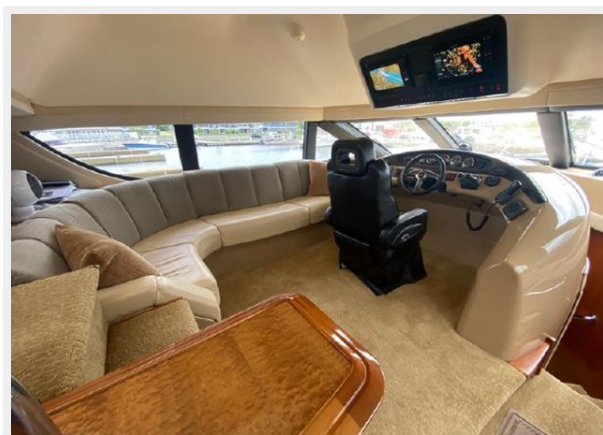
Двигатели: 2

Производитель: Volvo Penta

Тип двигателя: Inboard

Тип топлива: Diesel

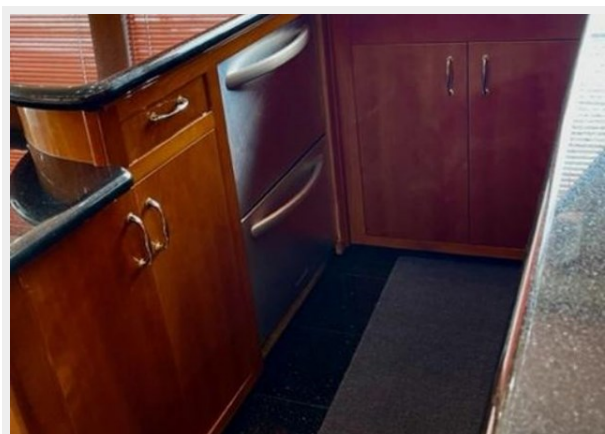
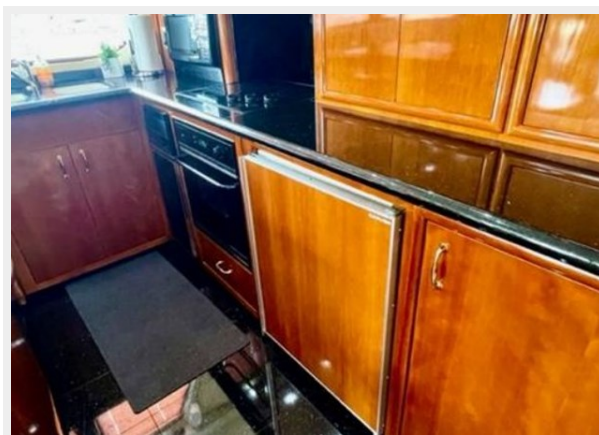
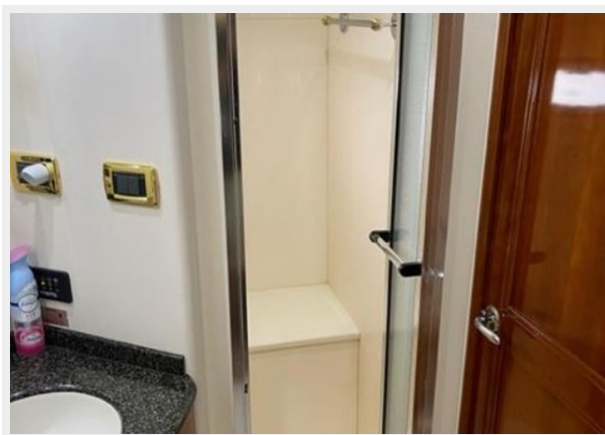
ФОТОГРАФИИ



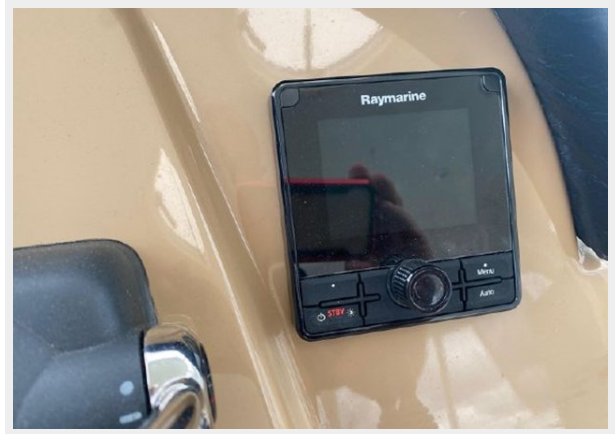


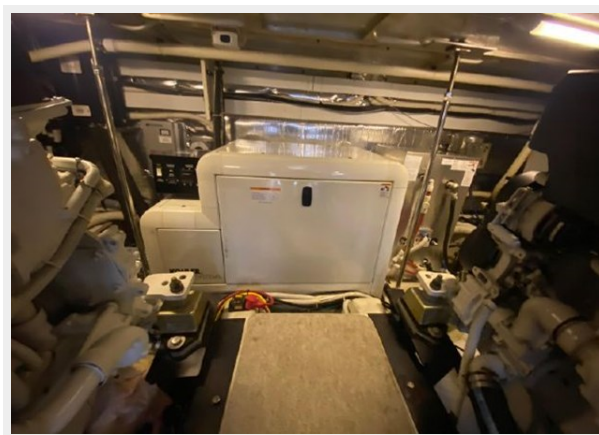












КОНТАКТЫ

Андрей Шестаков (Andrey Shestakov) – ведущий яхтенный брокер отдела продаж яхт и судов компании Shestakov Yacht Sales Inc. Официальный представитель Shestakov Yacht Sales Inc. для русскоговорящих клиентов в центральном офисе компании в Майами/Форт Лодердейл/Флорида/США.

Контактная информация

Email: andrey@shestakovyachtsales.com

Web: shestakovyachtsales.com

Телефоны

Краснодарский край: **+7(918)465-66-44**

США, Майами, Флорида: **+1(954)274-4435**

Время работы

Понедельник – Суббота: **9:00 - 21:00**
EDT

Воскресенье: **Закрито**

Адрес



Harbour Towne Marina, 850 NE 3rd St,
STE 213, Dania, FL 33004