

NAUTILUS — OCEAN ALEXANDER



Builder: OCEAN ALEXANDER

Year Built: 2006

Model: Motor Yacht

Price: PRICE ON APPLICATION

Location: United States

LOA: 48' (14.63mm)

Beam: 14.58

Min Draft: 3' 11" (1.19mm)

Max Draft: 3' 11" (1.19mm)

Cruise Speed: 9 Knots Kts. (10 MPH)

Max Speed: 17 Knots Kts. (20 MPH)

Our experienced yacht broker, Andrey Shestakov, will help you choose and buy a yacht that best suits your needs **Nautilus — OCEAN ALEXANDER** from our catalogue. Presently, at **Shestakov Yacht Sales Inc.**, we have a wide variety of yachts available on our sale's list. We also work in close contact with all the big yacht manufacturers from all over the world.

If you would like to buy a yacht **Nautilus — OCEAN ALEXANDER** or would like help answering any questions concerning purchasing, selling or chartering a yacht, please call **+1(954)274-4435**

TABLE OF CONTENTS

TABLE OF CONTENTS	2
SPECIFICATIONS	6
Overview	6
Basic Information	6
Dimensions	6
Speed, Capacities and Weight	6
Accommodations	6
Hull and Deck Information	6
Engine Information	6
PHOTOS	7
0_2795292_48_ocean_alexander_starboard_forward_profile	7
1_2795292_48_ocean_alexander_starboard_aft_profile	7
3_2795292_48_ocean_alexander_port_forward_profile	7
2_2795292_48_ocean_alexander_starboard_profile	7
5_2795292_48_ocean_alexander_aft_profile	7
4_2795292_48_ocean_alexander_port_aft_profile	7
6_2795292_48_ocean_alexander_anchor_windlass	8
7_2795292_48_ocean_alexander_foredeck1	8
8_2795292_48_ocean_alexander_foredeck2	8
9_2795292_48_ocean_alexander_foredeck_aft	8
10_2795292_48_ocean_alexander_port_side_deck1	8
11_2795292_48_ocean_alexander_port_side_deck2	8
12_2795292_48_ocean_alexander_starboard_side_deck1	9
13_2795292_48_ocean_alexander_starboard_side_deck2	9
14_2795292_48_ocean_alexander_flybridge_forward	9
15_2795292_48_ocean_alexander_flybridge_aft1	9
16_2795292_48_ocean_alexander_flybridge_aft2	9
17_2795292_48_ocean_alexander_flybridge_port	9

18_2795292_48_ocean_alexander_flybridge_starboard	9
19_2795292_48_ocean_alexander_flybridge_helm	9
20_2795292_48_ocean_alexander_flybridge_helmseat	10
21_2795292_48_ocean_alexander_flybridge_mid_seating	10
22_2795292_48_ocean_alexander_flybridge_aft_seating	10
23_2795292_48_ocean_alexander_flybridge_wetbar1	10
24_2795292_48_ocean_alexander_flybridge_wetbar2	10
25_2795292_48_ocean_alexander_flybridge_aftdeck_stairs	10
26_2795292_48_ocean_alexander_aftdeck1	10
27_2795292_48_ocean_alexander_aftdeck2	10
28_2795292_48_ocean_alexander_aftdeck_port	11
29_2795292_48_ocean_alexander_aftdeck_starboard	11
31_2795292_48_ocean_alexander_aftdeck_flybridge_stairs	11
30_2795292_48_ocean_alexander_aftdeck_control_station	11
33_2795292_48_ocean_alexander_lazarette_access	11
32_2795292_48_ocean_alexander_aftdeck_bbq_grill	11
34_2795292_48_ocean_alexander_swimplatform	11
35_2795292_48_ocean_alexander_tender_chocks	11
36_2795292_48_ocean_alexander_salon_forward	12
37_2795292_48_ocean_alexander_salon_aft	12
38_2795292_48_ocean_alexander_salon_port	12
39_2795292_48_ocean_alexander_salon_starboard	12
40_2795292_48_ocean_alexander_salon_port_seating	12
41_2795292_48_ocean_alexander_salon_tv	12
43_2795292_48_ocean_alexander_lower_helm2	12
42_2795292_48_ocean_alexander_lower_helm1	12
44_2795292_48_ocean_alexander_lower_helm3	13
45_2795292_48_ocean_alexander_galley1	13
46_2795292_48_ocean_alexander_galley2	13

47_2795292_48_ocean_alexander_galley3	13
49_2795292_48_ocean_alexander_galley_oven	13
48_2795292_48_ocean_alexander_galley_cooktop	13
51_2795292_48_ocean_alexander_companionway_forward	13
52_2795292_48_ocean_alexander_companionway_aft	13
53_2795292_48_ocean_alexander_master_stateroom	14
54_2795292_48_ocean_alexander_master_stateroom_port	14
56_2795292_48_ocean_alexander_master_stateroom_head	14
55_2795292_48_ocean_alexander_master_stateroom_starboard	14
57_2795292_48_ocean_alexander_master_stateroom_shower	14
58_2795292_48_ocean_alexander_guest_stateroom	14
59_2795292_48_ocean_alexander_guest_stateroom_head	15
60_2795292_48_ocean_alexander_engine_room_access1	15
61_2795292_48_ocean_alexander_engine_room_access2	15
62_2795292_48_ocean_alexander_engine_room_forward	15
63_2795292_48_ocean_alexander_engine_room_aft	15
64_2795292_48_ocean_alexander_port_main_engine	15
65_2795292_48_ocean_alexander_port_racor_fuel_filters	15
66_2795292_48_ocean_alexander_starboard_main_engine	15
67_2795292_48_ocean_alexander_starboard_racor_fuel_filters	16
68_2795292_48_ocean_alexander_oil_change_system	16
69_2795292_48_ocean_alexander_water_heater	16
70_2795292_48_ocean_alexander_electrical_panel	16
71_2795292_48_ocean_alexander_generator_soundbox	16
72_2795292_48_ocean_alexander_generator	16
73_2795292_48_ocean_alexander_generator_racor_fuel_filters	16
74_2795292_48_ocean_alexander_battery_charger1	16
75_2795292_48_ocean_alexander_battery_chargers2	17
CONTACTS	18

Contact details	18
Telephones	18
Office hours	18
Address	18

SPECIFICATIONS

Overview

“Nautilus” is a 2006 Ocean Alexander Classico M/Y with great running Twin Yanmar Diesels. This fast trawler has a classic look with modern amenities which shows in the craftsmanship. This two cabin model provides very spacious and comfortable accommodations for the owner and guests, two heads, with a galley up and an open salon with a great aft deck. This M/Y has a large fly bridge for entertaining while underway or relaxing at anchor. This is a great boat for the Bahamas or the Great Loop due to the capability of captaining from the lower helm or the bridge. Nautilus has accomplished both the Bahamas and Great Loop trip and is ready for the next adventure.

Basic Information

Category: Motor Yacht	Model Year: 2006
Year Built: 2006	Country: United States

Dimensions

LOA: 48' (14.63mm)	Beam: 14.58
Min Draft: 3' 11" (1.19mm)	Max Draft: 3' 11" (1.19mm)

Speed, Capacities and Weight

Cruise Speed: 9 Knots Kts. (10 MPH)	Max Speed: 17 Knots Kts. (20 MPH)
Water Capacity: 200 Gallons	Holding Tank: 60 Gal Gallons
Fuel Capacity: 600 Gal Gallons	

Accommodations

Total Cabins: 2	Sleeps: 4
Total Heads: 2	

Hull and Deck Information

Hull Material: Fiberglass

Engine Information

Engines: 2	Manufacturer: Yanmar
Engine Type: Inboard	Fuel Type: Diesel

PHOTOS

0_2795292_48_ocean_alexander_starboard_forward_profile



1_2795292_48_ocean_alexander_starboard_aft_profile



3_2795292_48_ocean_alexander_port_forward_profile



2_2795292_48_ocean_alexander_starboard_profile



5_2795292_48_ocean_alexander_aft_profile



4_2795292_48_ocean_alexander_port_aft_profile



6_2795292_48_ocean_alexander_anchor_windlass



7_2795292_48_ocean_alexander_foredeck1



8_2795292_48_ocean_alexander_foredeck2



9_2795292_48_ocean_alexander_foredeck_aft



10_2795292_48_ocean_alexander_port_side_deck1



11_2795292_48_ocean_alexander_port_side_deck2



12_2795292_48_ocean_alexander_starboard_side_deck1



13_2795292_48_ocean_alexander_starboard_side_deck2



14_2795292_48_ocean_alexander_flybridge_forward



15_2795292_48_ocean_alexander_flybridge_aft1



16_2795292_48_ocean_alexander_flybridge_aft2



17_2795292_48_ocean_alexander_flybridge_port



18_2795292_48_ocean_alexander_flybridge_starboard



19_2795292_48_ocean_alexander_flybridge_helm



20_2795292_48_ocean_alexander_flybridge_helmseat



21_2795292_48_ocean_alexander_flybridge_mid_seating



22_2795292_48_ocean_alexander_flybridge_aft_seating



23_2795292_48_ocean_alexander_flybridge_wetbar1



24_2795292_48_ocean_alexander_flybridge_wetbar2



25_2795292_48_ocean_alexander_flybridge_aftdeck_stairs



26_2795292_48_ocean_alexander_aftdeck1



27_2795292_48_ocean_alexander_aftdeck2



28_2795292_48_ocean_alexander_aftdeck_port



29_2795292_48_ocean_alexander_aftdeck_starboard



30_2795292_48_ocean_alexander_aftdeck_control_station



31_2795292_48_ocean_alexander_aftdeck_flybridge_stairs



32_2795292_48_ocean_alexander_aftdeck_bbq_grill



33_2795292_48_ocean_alexander_lazarette_access



34_2795292_48_ocean_alexander_swimplatform



35_2795292_48_ocean_alexander_tender_chocks



36_2795292_48_ocean_alexander_salon_forward



37_2795292_48_ocean_alexander_salon_aft



38_2795292_48_ocean_alexander_salon_port



39_2795292_48_ocean_alexander_salon_starboard



40_2795292_48_ocean_alexander_salon_port_seating



41_2795292_48_ocean_alexander_salon_tv



42_2795292_48_ocean_alexander_lower_helm1



43_2795292_48_ocean_alexander_lower_helm2



44_2795292_48_ocean_alexander_lower_helm3



45_2795292_48_ocean_alexander_galley1



46_2795292_48_ocean_alexander_galley2



47_2795292_48_ocean_alexander_galley3



48_2795292_48_ocean_alexander_galley_cooktop



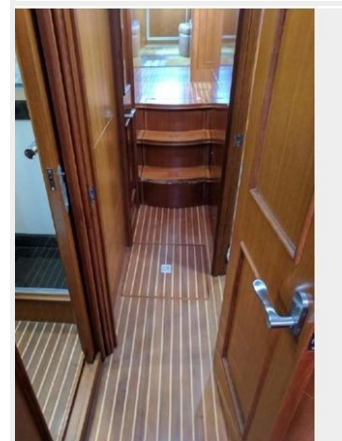
49_2795292_48_ocean_alexander_galley_oven



51_2795292_48_ocean_alexander_companionway_forward



52_2795292_48_ocean_alexander_companionway_aft



53_2795292_48_ocean_alexander_master_stateroom



54_2795292_48_ocean_alexander_master_stateroom_port



56_2795292_48_ocean_alexander_master_stateroom_head

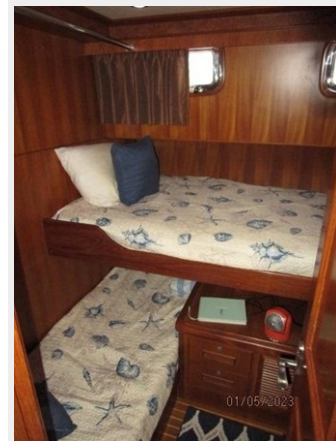
55_2795292_48_ocean_alexander_master_stateroom_starboard



57_2795292_48_ocean_alexander_master_stateroom_shower



58_2795292_48_ocean_alexander_guest_stateroom



59_2795292_48_ocean_alexander_guest_stateroom_head



60_2795292_48_ocean_alexander_engine_room_access1



61_2795292_48_ocean_alexander_engine_room_access2



62_2795292_48_ocean_alexander_engine_room_forward



63_2795292_48_ocean_alexander_engine_room_aft



64_2795292_48_ocean_alexander_port_main_engine



65_2795292_48_ocean_alexander_port_racor_fuel_filters



66_2795292_48_ocean_alexander_starboard_main_engine



67_2795292_48_ocean_alexander_starboard_racor_fuel_filters



68_2795292_48_ocean_alexander_oil_change_system



69_2795292_48_ocean_alexander_water_heater



70_2795292_48_ocean_alexander_electrical_panel



71_2795292_48_ocean_alexander_generator_soundbox



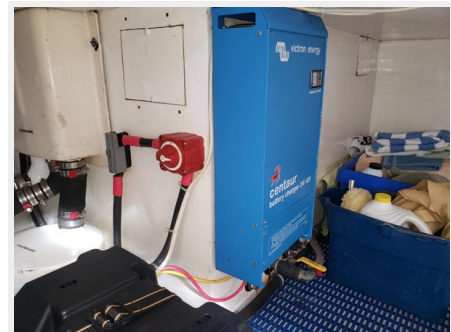
72_2795292_48_ocean_alexander_generator



73_2795292_48_ocean_alexander_generator_racor_fuel_filters



74_2795292_48_ocean_alexander_battery_charger1



75_2795292_48_ocean_alexander_battery_chargers2



CONTACTS

Andrey Shestakov, leading yacht broker of the sales department of Shestakov Yacht Sales Inc. Shestakov Yacht Sales Inc., the official representative of the Miami/Fort Lauderdale FL headquarters.

Contact details

Email:
andrey@shestakovyachtsales.com

Web: shestakovyachtsales.com/en/

Telephones

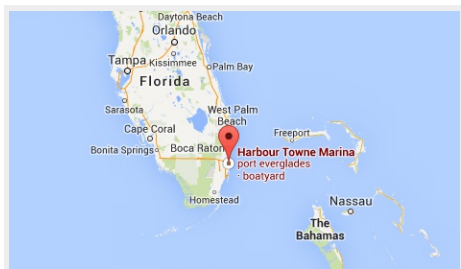
USA: +1(954)274-4435

Office hours

Monday – Saturday: **9:00 - 21:00 EDT**

Sunday: **closed**

Address



Harbour Towne Marina, 850 NE 3rd St,
STE 213, Dania, FL 33004