

ASTERIA — ANASTASSIADES & TSORTANIDES



Builder:

ANASTASSIADES & TSORTANIDES

Year Built: 1970

Model: expedition yacht

Price: \$19,900,000 USD

Location: Norway

LOA: 162' (49.38mm)

Beam: 31.5

Max Draft: 16' 5" (5mm)

Cruise Speed: 11 Knots Kts. (13 MPH)

Max Speed: 14 Knots Kts. (16 MPH)

Our experienced yacht broker, Andrey Shestakov, will help you choose and buy a yacht that best suits your needs **ASTERIA — ANASTASSIADES & TSORTANIDES** from our catalogue. Presently, at Shestakov Yacht Sales Inc., we have a wide variety of yachts available on our sale's list. We also work in close contact with all the big yacht manufacturers from all over the world.

If you would like to buy a yacht **ASTERIA — ANASTASSIADES & TSORTANIDES** or would like help answering any questions concerning purchasing, selling or chartering a yacht, please call **+1(954)274-4435**

TABLE OF CONTENTS

TABLE OF CONTENTS	2
SPECIFICATIONS	4
Overview	4
Basic Information	4
Dimensions	4
Speed, Capacities and Weight	4
Accommodations	4
Hull and Deck Information	5
Engine Information	5
PHOTOS	6
Movie Salon	6
Movie Salon	6
Owner Stateroom	6
Dining Room	6
Owner Stateroom	6
Owner En-Suite Head	6
Owner Closet	7
Owner En-Suite Head	7
Children Stateroom	7
VIP Stateroom (Port)	7
VIP Stateroom (Starboard)	7
Guest Stateroom (Starboard)	7
Guest Stateroom En-Suite Head	8
Guest Stateroom (Starboard)	8
Twin Stateroom	8
Twin Stateroom	8
Twin Stateroom En-Suite Head	8
Dayhead	8

Skylounge	9
Skylounge	9
Skylounge Bar	9
Pilothouse	9
Bridge	9
Pilothouse Seating	9
Sundeck	10
Helm Seating	10
Sundeck	10
Jacuzzi	10
Helideck	10
Jacuzzi	10
Upper Aft Deck	11
Upper Aft Deck	11
Lower Aft Deck	11
Stern	11
Ariel View	12
CONTACTS	13
Contact details	13
Telephones	13
Office hours	13
Address	13

SPECIFICATIONS

Overview

Motor Yacht ASTERIA is a 162' (49.4m) yacht for sale, built and launched by the Greek shipyard ANASTASSIADES & TSORTANIDES in 1970 as an ocean-going rescue tug. She was refit first in 2000/2002 again in 2019,2022 and 2023/2024. This vessel sleeps up to 14 guests in 7 staterooms.

Basic Information

Category: expedition yacht

Sub Category: Expedition or Explorer

Model Year: 1970

Year Built: 1970

Country: Norway

Dimensions

LOA: 162' (49.38m)

Beam: 31.5

Max Draft: 16' 5" (5m)

Speed, Capacities and Weight

Cruise Speed: 11 Knots Kts. (13 MPH)

Max Speed: 14 Knots Kts. (16 MPH)

Gross Tonnage: 669 Pounds

Water Capacity: 76000 Gallons

Fuel Capacity: 49664.35 Gal Gallons

Accommodations

Total Cabins: 7

Sleeps: 14

Crew Cabin: 16

Crew Berths: 12

Hull and Deck Information

Hull Material: Steel

Hull Designer: Pieter Beeldsnijder

Exterior Designer: Pieter Beeldsnijder
Design

Interior Designer: Robinson Marine Interiors
and Tracy Barnier-Willis Designs / 2019
Charles Zana

Engine Information

Engines: 1

Manufacturer: Caterpillar

Engine Type: Inboard

Fuel Type: Diesel

PHOTOS

Movie Salon



Movie Salon



Dining Room



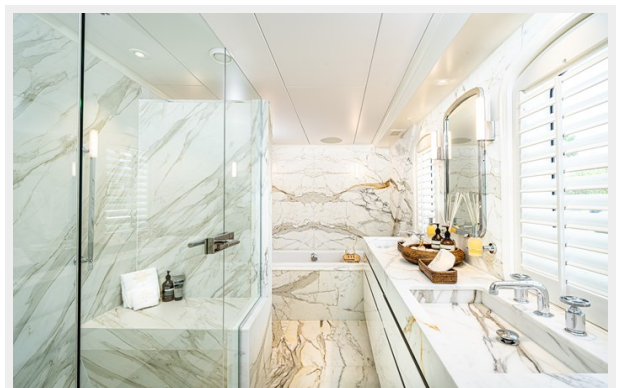
Owner Stateroom



Owner Stateroom



Owner En-Suite Head



Owner En-Suite Head



Owner Closet



Children Stateroom



VIP Stateroom (Port)



VIP Stateroom (Starboard)



Guest Stateroom (Starboard)



Guest Stateroom (Starboard)



Guest Stateroom En-Suite Head



Twin Stateroom



Twin Stateroom



Twin Stateroom En-Suite Head



Dayhead



Skylounge



Skylounge



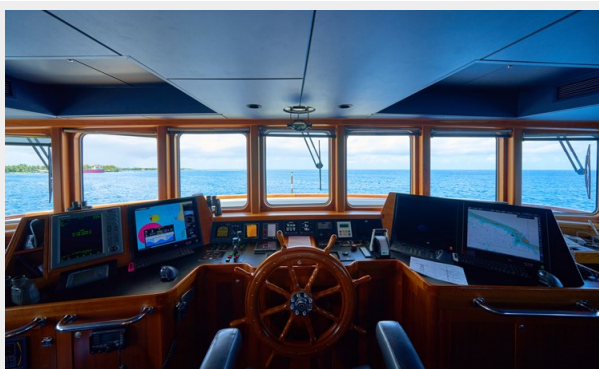
Skylounge Bar



Pilothouse



Bridge



Pilothouse Seating



Helm Seating



Sundeck



Sundeck



Jacuzzi



Helideck



Jacuzzi



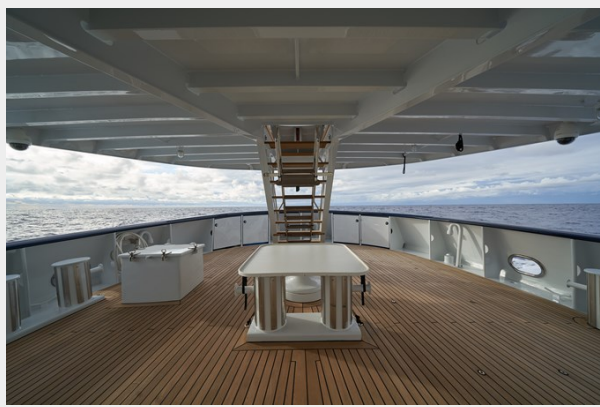
Upper Aft Deck



Upper Aft Deck



Lower Aft Deck



Stern



Ariel View



CONTACTS

Andrey Shestakov, leading yacht broker of the sales department of Shestakov Yacht Sales Inc. Shestakov Yacht Sales Inc., the official representative of the Miami/Fort Lauderdale FL headquarters.

Contact details

Email: andrey@shestakovyachtsales.com

Web: shestakovyachtsales.com/en/

Telephones

USA: +1(954)274-4435

Office hours

Monday – Saturday: **9:00 - 21:00** EDT

Sunday: **closed**

Address



Harbour Towne Marina, 850 NE 3rd St,
STE 213, Dania, FL 33004