

## POSITIVE LATITUDE — MAINSHIP



**Builder:** MAINSHIP

**Year Built:** 2007

**Model:** trawler

**Price:** PRICE ON APPLICATION

**Location:** United States

**LOA:** 43' (13.11mm)

**Beam:** 15.5

**Max Draft:** 3' 8" (1.12mm)

**Cruise Speed:** 18 Knots Kts. (21 MPH)

**Max Speed:** 22 Knots Kts. (25 MPH)

Our experienced yacht broker, Andrey Shestakov, will help you choose and buy a yacht that best suits your needs **Positive Latitude — MAINSHIP** from our catalogue. Presently, at Shestakov Yacht Sales Inc., we have a wide variety of yachts available on our sale's list. We also work in close contact with all the big yacht manufacturers from all over the world.

If you would like to buy a yacht **Positive Latitude — MAINSHIP** or would like help answering any questions concerning purchasing, selling or chartering a yacht, please call **+1(954)274-4435**

---

# TABLE OF CONTENTS

---

TABLE OF CONTENTS	2
SPECIFICATIONS	5
Overview	5
Basic Information	6
Dimensions	6
Speed, Capacities and Weight	6
Accommodations	6
Hull and Deck Information	6
Engine Information	6
PHOTOS	7
0_2795381_starboard_bow_profile	7
1_2795381_starboard_profile	7
2_2795381_bow_profile	7
3_2795381_port_bow_profile	7
4_2795381_port_stern_profile	7
5_2795381_cockpit_starboard	7
6_2795381_cockpit_port	7
7_2795381_cockpit_forward	7
8_2795381_salon_forward	8
9_2795381_salon_port	8
10_2795381_salon_starboard	8
11_2795381_salon_lower_helm_wide	8
12_2795381_salon_lower_helm	8
13_2795381_salon_aft	8
14_2795381_galley_port	8
15_2795381_galley_forward	8
17_2795381_guest_stateroom_forward	9
16_2795381_galley_aft	9

---

18_2795381_guest_stateroom_aft	9
19_2795381_guest_stateroom_laundry	9
20_2795381_master_stateroom_forward	9
21_2795381_master_stateroom_port	9
23_2795381_head_toilet_and_tubshower	10
22_2795381_master_stateroom_starboard	10
24_2795381_head_toilet_and_vanity	10
25_2795381_flybridge_forward	10
26_2795381_flybridge_helm_wide	10
27_2795381_flybridge_helm	10
28_2795381_flybridge_port	11
29_2795381_flybridge_starboard	11
30_2795381_flybridge_aft	11
31_2795381_flybridge_aft_deck_port_aft	11
32_2795381_flybridge_aft_deck_starboard_forward	11
33_2795381_flybridge_aft_deck_summer_kitchen	11
34_2795381_engine_room_forward	11
35_2795381_36engineroomaft	11
36_2795381_37engineroomport	12
37_2795381_38engineroomstarboard	12
38_2795381_39mechportmainengine	12
39_2795381_40mechstarboardmainengine	12
40_2795381_racor_fuel_filtration	12
41_2795381_racor_fuel_polisher	12
42_2795381_oil_change_system	12
43_2795381_fire_suppression	12
44_2795381_dripless_shaft_seals	13
45_2795381_reverse_cycle_air	13
46_2795381_water_heater	13

---

---

47_2795381_generator	13
48_2795381_generator	13
49_2795381_battery_chargers_24_vdc	13
50_2795381_battery_charger_12_vdc	13
51_2795381_inverter	13
52_2795381_battery_bank	14
53_2795381_battery_bank	14
54_2795381_electrical_panel	14
55_2795381_electrical_panel	14
57_2795381_port_walkway	14
56_2795381_electrical_panel	14
58_2795381_starboard_walkway	15
59_2795381_fore_deck_forward	15
60_2795381_bow_pulpit	15
61_2795381_windlass	15
62_2795381_anchor	15
63_2795381_fore_deck_aft	15
64_2795381_tender	15
65_2795381_tender	15
66_2795381_deckoutboard	16
CONTACTS	17
Contact details	17
Telephones	17
Office hours	17
Address	17

# SPECIFICATIONS

---

## Overview

---

Positive Latitude is a well maintained and beautiful 2007 Mainship 430 Sedan 430 Trawler that offers a comfortable 2 stateroom layout, well equipped upper and lower helms, bow thruster, low-hour Cummins QSC 8.3 HO main engines, Onan 9 kw generator, AIS transponder, a 2,000 watt inverter and an Avon RIB tender with 9.9 hp Yamaha engine. A large salon, U-shaped galley and spacious flybridge provides plenty of space for relaxing or entertaining. Positive Latitude is a Great Loop veteran and is ready to cruise immediately.

Recent upgrades and improvements include:

### 2020

- Add 2 tablet mounts to upper and lower helms
- Install NMEA Multiplexer (ShipModul 1137 MiniPlex-3WI-N2K WiFi USB NMEA 0183/2000 Multiplexer from iMarine)
- Install additional 120v outlet in galley forward under upper cabinet on the same circuit as microwave
- Install an additional battery charger to decrease battery bank charge time
- Install Balmar battery monitor display in salon with shunts to each battery bank in the engine room
- Install autopilot controller at the lower helm
- Install internet cell/wifi dome on mast
- Install USB charge ports at the lower helm
- Install USB charge ports at the upper helm
- Install forward camera
- Replace aft camera
- Replace cockpit camera
- Remove 2 existing underwater lights and install 4 Lumitec SeaBlaze X2 Underwater Lights on stern
- Install compass at the lower helm
- Install wired remote for Freedom Lift

### 2021

- Add vacuum gauges to engine Racor fuel filters
- Install engine room camera
- Replace existing anchor rode with 250 feet of chain
- Add dinghy under seat storage
- Installed Rockville RGHR45 stereo in the salon with bluetooth and speakers zones in the salon and flybridge
- Added USB charge port and DC plug to the port side in the main cabin.
- Added USB charge port and AC outlet to starboard side in the main cabin
- Installed Standard Horizon RAM 4 Remote to use lower helm VHF at upper helm
- Installed Standard Horizon RAM 3 Remote to use upper helm VHF at the lower helm

---

## Basic Information

---

**Category:** trawler

**Model Year:** 2007

**Year Built:** 2007

**Country:** United States

---

## Dimensions

---

**LOA:** 43' (13.11mm)

**Beam:** 15.5

**Max Draft:** 3' 8" (1.12mm)

---

## Speed, Capacities and Weight

---

**Cruise Speed:** 18 Knots Kts. (21 MPH)

**Max Speed:** 22 Knots Kts. (25 MPH)

**Water Capacity:** 200 Gallons

**Holding Tank:** 56 Gal Gallons

**Fuel Capacity:** 777 Gal Gallons

---

## Accommodations

---

**Total Cabins:** 2

**Total Heads:** 1

---

## Hull and Deck Information

---

**Hull Material:** Fiberglass

---

## Engine Information

---

**Engines:** 2

**Manufacturer:** Cummins

**Engine Type:** Inboard

**Fuel Type:** Diesel

# PHOTOS

0\_2795381\_starboard\_bow\_profile



1\_2795381\_starboard\_profile



2\_2795381\_bow\_profile



3\_2795381\_port\_bow\_profile



4\_2795381\_port\_stern\_profile



5\_2795381\_cockpit\_starboard



6\_2795381\_cockpit\_port



7\_2795381\_cockpit\_forward



8\_2795381\_salon\_forward



9\_2795381\_salon\_port



10\_2795381\_salon\_starboard



11\_2795381\_salon\_lower\_helm\_wide



12\_2795381\_salon\_lower\_helm



13\_2795381\_salon\_aft



14\_2795381\_galley\_port



15\_2795381\_galley\_forward





17\_2795381\_guest\_stateroom\_forward



16\_2795381\_galley\_aft



18\_2795381\_guest\_stateroom\_aft



19\_2795381\_guest\_stateroom\_laundry



20\_2795381\_master\_stateroom\_forward



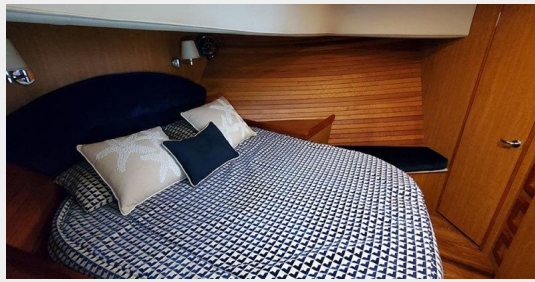
21\_2795381\_master\_stateroom\_port



23\_2795381\_head\_toilet\_and\_tubshower



22\_2795381\_master\_stateroom\_starboard



24\_2795381\_head\_toilet\_and\_vanity



25\_2795381\_flybridge\_forward



26\_2795381\_flybridge\_helm\_wide



27\_2795381\_flybridge\_helm



28\_2795381\_flybridge\_port



29\_2795381\_flybridge\_starboard



30\_2795381\_flybridge\_aft



31\_2795381\_flybridge\_aft\_deck\_port\_aft



32\_2795381\_flybridge\_aft\_deck\_starboard\_forward 33\_2795381\_flybridge\_aft\_deck\_summer\_kitchen



34\_2795381\_engine\_room\_forward



35\_2795381\_36engineeroomaft



36\_2795381\_37engineerroomport



37\_2795381\_38engineerroomstarboard



38\_2795381\_39mechportmainengine



39\_2795381\_40mechstarboardmainengine



40\_2795381\_racor\_fuel\_filtration



41\_2795381\_racor\_fuel\_polisher



42\_2795381\_oil\_change\_system



43\_2795381\_fire\_suppression



44\_2795381\_dripless\_shaft\_seals



45\_2795381\_reverse\_cycle\_air



46\_2795381\_water\_heater



47\_2795381\_generator



48\_2795381\_generator



49\_2795381\_battery\_chargers\_24\_vdc



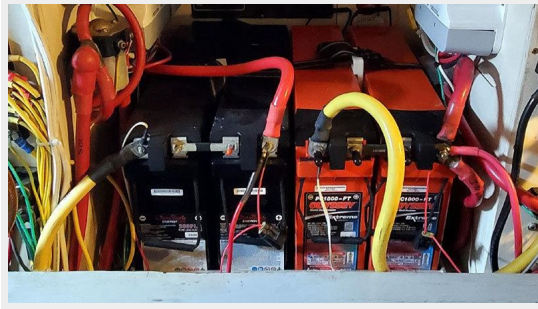
50\_2795381\_battery\_charger\_12\_vdc



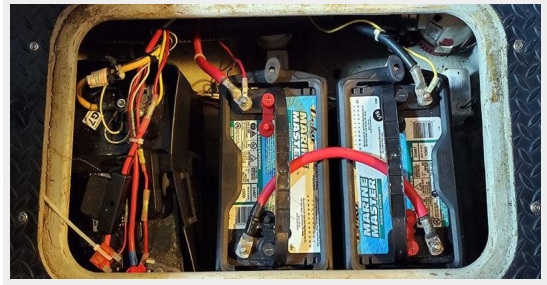
51\_2795381\_inverter



52\_2795381\_battery\_bank



53\_2795381\_battery\_bank



54\_2795381\_electrical\_panel



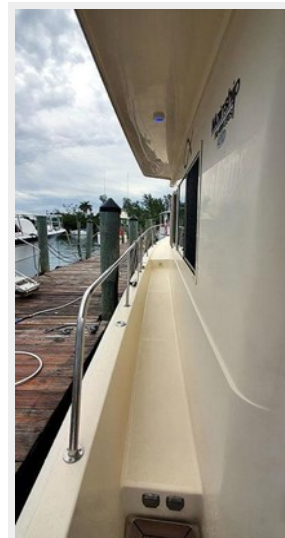
55\_2795381\_electrical\_panel



56\_2795381\_electrical\_panel



57\_2795381\_port\_walkway



58\_2795381\_starboard\_walkway



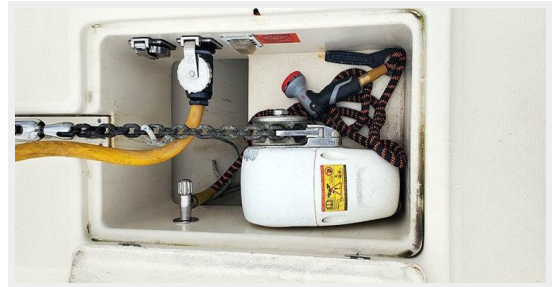
59\_2795381\_fore\_deck\_forward



60\_2795381\_bow\_pulpit



61\_2795381\_windlass



62\_2795381\_anchor



63\_2795381\_fore\_deck\_aft



64\_2795381\_tender



65\_2795381\_tender



66\_2795381\_deckoutboard





---

# CONTACTS

---

Andrey Shestakov, leading yacht broker of the sales department of Shestakov Yacht Sales Inc. Shestakov Yacht Sales Inc., the official representative of the Miami/Fort Lauderdale FL headquarters.

---

## Contact details

---

Email:  
**andrey@shestakovyachtsales.com**

Web: [shestakovyachtsales.com/en/](http://shestakovyachtsales.com/en/)

---

## Telephones

---

USA: **+1(954)274-4435**

---

## Office hours

---

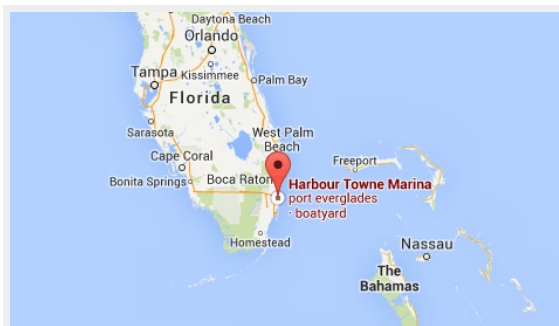
Monday – Saturday: **9:00 - 21:00 EDT**

Sunday: **closed**

---

## Address

---



Harbour Towne Marina, 850 NE 3rd St,  
STE 213, Dania, FL 33004