

YACHT SEA — ISLAND PACKET YACHTS



Builder: ISLAND PACKET YACHTS

Year Built: 1991

Model: Sloop

Price: PRICE ON APPLICATION

Location: United States

LOA: 32' (9.75mm)

Beam: 11.5

Min Draft: 3' 6" (1.07mm)

Max Draft: 4' 4" (1.32mm)

Cruise Speed: 7.2 Knots Kts. (8 MPH)

Our experienced yacht broker, Andrey Shestakov, will help you choose and buy a yacht that best suits your needs **Yacht Sea — ISLAND PACKET YACHTS** from our catalogue. Presently, at Shestakov Yacht Sales Inc., we have a wide variety of yachts available on our sale's list. We also work in close contact with all the big yacht manufacturers from all over the world.

If you would like to buy a yacht **Yacht Sea — ISLAND PACKET YACHTS** or would like help answering any questions concerning purchasing, selling or chartering a yacht, please call **+1(954)274-4435**

TABLE OF CONTENTS

TABLE OF CONTENTS	2
SPECIFICATIONS	5
Overview	5
Basic Information	5
Dimensions	5
Speed, Capacities and Weight	5
Accommodations	5
Hull and Deck Information	6
Engine Information	6
PHOTOS	7
0_2795424_	7
2_2795424_	7
3_2795424_	7
4_2795424_	7
5_2795424_	7
6_2795424_	7
7_2795424_	8
8_2795424_	8
9_2795424_	8
10_2795424_	8
11_2795424_	8
12_2795424_	8
13_2795424_	9
14_2795424_	9
15_2795424_	9
16_2795424_	9
17_2795424_	9
18_2795424_	9

19_2795424_	10
20_2795424_	10
21_2795424_	10
22_2795424_	10
23_2795424_	10
24_2795424_	10
25_2795424_	11
26_2795424_	11
27_2795424_	11
28_2795424_	11
29_2795424_	11
30_2795424_	11
31_2795424_	12
32_2795424_	12
33_2795424_	12
34_2795424_	12
35_2795424_	12
36_2795424_	12
37_2795424_	13
38_2795424_	13
39_2795424_	13
40_2795424_	13
41_2795424_	13
42_2795424_	13
43_2795424_	14
44_2795424_	14
45_2795424_	14
46_2795424_	14
47_2795424_	14

48_2795424_	14
49_2795424_	15
50_2795424_	15
51_2795424_	15
52_2795424_	15
53_2795424_	15
54_2795424_	15
55_2795424_	16
56_2795424_	16
57_2795424_	16
CONTACTS	17
Contact details	17
Telephones	17
Office hours	17
Address	17

SPECIFICATIONS

Overview

The IP 32 is a blue water capable cruiser that is known for its above average size and comfort. Well-constructed hull with an open saloon, larger aft berth and forward head aft of the V- berth. The cockpit is equipped to single handedly cruise while staying comfortable inside the enclosure. Davit system & hoist stainless steel. The centerboard allows greater access to more anchorages, while increasing the ability to point. Yanmar diesel, new cushions/ canvas.

Basic Information

Category: Sloop

Model Year: 1991

Year Built: 1991

Country: United States

Dimensions

LOA: 32' (9.75mm)

LWL: 28' 6" (8.69mm)

Beam: 11.5

Min Draft: 3' 6" (1.07mm)

Max Draft: 4' 4" (1.32mm)

Speed, Capacities and Weight

Cruise Speed: 7.2 Knots Kts. (8 MPH)

Water Capacity: 85 Gallons

Holding Tank: 15 Gal Gallons

Fuel Capacity: 28 Gal Gallons

Accommodations

Total Cabins: 3

Total Heads: 1

Hull and Deck Information

Hull Material: Fiberglass

Engine Information

Engines: 1

Manufacturer: Yanmar

Engine Type: Inboard

Fuel Type: Diesel

PHOTOS

0_2795424_



2_2795424_



3_2795424_



4_2795424_



5_2795424_



6_2795424_



7_2795424_



8_2795424_



9_2795424_



10_2795424_



11_2795424_



12_2795424_



13_2795424_



14_2795424_



15_2795424_



16_2795424_



17_2795424_



18_2795424_



19_2795424_



20_2795424_



21_2795424_



22_2795424_



23_2795424_



24_2795424_



25_2795424_



26_2795424_



27_2795424_



28_2795424_



29_2795424_



30_2795424_



31_2795424_



32_2795424_



33_2795424_



34_2795424_



35_2795424_



36_2795424_



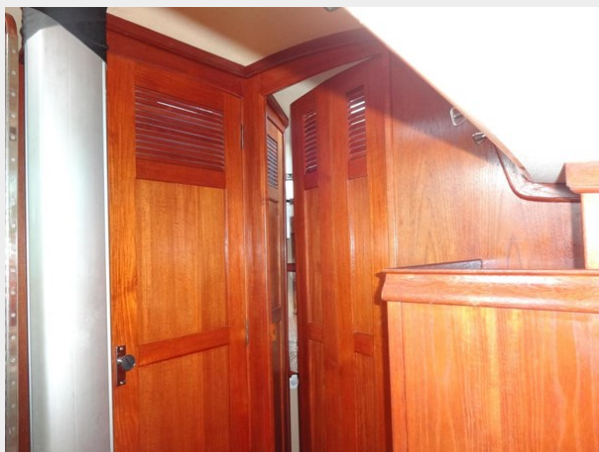
37_2795424_



38_2795424_



39_2795424_



40_2795424_



41_2795424_



42_2795424_



43_2795424_



44_2795424_



45_2795424_



46_2795424_



47_2795424_



48_2795424_



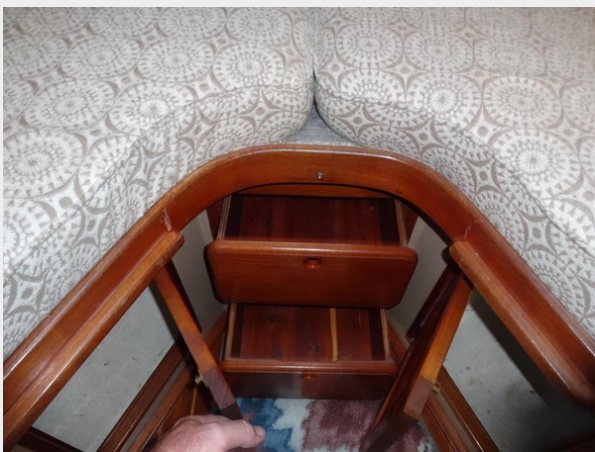
49_2795424_



50_2795424_



51_2795424_



52_2795424_



53_2795424_



54_2795424_



55_2795424_



56_2795424_



57_2795424_



CONTACTS

Andrey Shestakov, leading yacht broker of the sales department of Shestakov Yacht Sales Inc. Shestakov Yacht Sales Inc., the official representative of the Miami/Fort Lauderdale FL headquarters.

Contact details

Email: andrey@shestakovyachtsales.com

Web: shestakovyachtsales.com/en/

Telephones

USA: +1(954)274-4435

Office hours

Monday – Saturday: **9:00 - 21:00** EDT

Sunday: **closed**

Address



Harbour Towne Marina, 850 NE 3rd St,
STE 213, Dania, FL 33004