

COPACETIC — MAINSHIP



Builder: MAINSHIP

Year Built: 2006

Model: Trawler Yacht

Price: PRICE ON APPLICATION

Location: United States

LOA: 34' (10.36m)

Beam: 14.25

Max Draft: 3' 4" (1.02m)

Cruise Speed: 8 Knots Kts. (9 MPH)

Max Speed: 13 Knots Kts. (15 MPH)

Our experienced yacht broker, Andrey Shestakov, will help you choose and buy a yacht that best suits your needs **Copacetic — MAINSHIP** from our catalogue. Presently, at Shestakov Yacht Sales Inc., we have a wide variety of yachts available on our sale's list. We also work in close contact with all the big yacht manufacturers from all over the world.

If you would like to buy a yacht **Copacetic — MAINSHIP** or would like help answering any questions concerning purchasing, selling or chartering a yacht, please call **+1(954)274-4435**

TABLE OF CONTENTS

TABLE OF CONTENTS	2
SPECIFICATIONS	5
Overview	5
Basic Information	5
Dimensions	5
Speed, Capacities and Weight	5
Accommodations	6
Hull and Deck Information	6
Engine Information	6
PHOTOS	7
2_2795293_port_stern_profile	7
1_2795293_port_profile	7
3_2795293_stern_profile	7
4_2795293_port_bow_profile	7
5_2795293_bow_profile	8
6_2795293_starboard_bow_profile	8
7_2795293_cockpit_port	8
8_2795293_cockpit_starboard	8
9_2795293_engine_room_access	8
10_2795293_cockpit_forward	8
11_2795293_salon_forward	9
12_2795293_salon_port	9
14_2795293_salon_helm_wide	9
13_2795293_salon_starboard	9
15_2795293_salon_helm	9
16_2795293_salon_aft	9
17_2795293_galley_forward	10
18_2795293_galley_port	10

20_2795293_master_stateroom_forward	10
19_2795293_galley_aft	10
21_2795293_master_stateroom_port	10
22_2795293_master_stateroom_starboard	10
23_2795293_head_vanity_and_toilet	11
24_2795293_head_toilet_and_shower	11
25_2795293_flybridge_forward	11
26_2795293_flybridge_port	11
27_2795293_flybridge_starboard	11
28_2795293_flybridge_helm_wide	11
29_2795293_flybridge_helm	12
30_2795293_flybridge_aft	12
31_2795293_flybridge_aft_deck_port_aft	12
32_2795293_flybridge_aft_deck_port_forward	12
33_2795293_flybridge_aft_deck_starboard_af	12
34_2795293_flybridge_aft_deck_starboard_fo	12
35_2795293_sidewalk_port	13
36_2795293_sidewalk_starboard	13
37_2795293_fore_deck_forward	13
38_2795293_bow_pulpit	13
40_2795293_fore_deck_aft	13
39_2795293_ground_tackle	13
42_2795293_outboard	14
41_2795293_tender_and_davit	14
43_2795293_engine_room_forward	14
44_2795293_engine_room_port_aft	14
45_2795293_engine_room_starboard_forward	14
46_2795293_main_engine_port	14
48_2795293_main_engine_fuel_filter	15

47_2795293_main_engine_starboard	15
49_2795293_generator_fuel_filter	15
50_2795293_oil_changer	15
51_2795293_fire_suppression	15
52_2795293_dripleless_shaft_seal	15
53_2795293_water_heater	16
54_2795293_central_vacuum	16
55_2795293_generator	16
56_2795293_battery_charger	16
57_2795293_battery_bank_1	16
58_2795293_battery_bank_2	16
59_2795293_electrical_panel	16
CONTACTS	17
Contact details	17
Telephones	17
Office hours	17
Address	17

SPECIFICATIONS

Overview

Copacetic is a well maintained 2006 Mainship 34 with a beautiful blue hull. She features an island queen size berth forward in the master stateroom, a full head with separate enclosed shower stall, bow and stern thrusters. She is powered by a single Yanmar 370 hp main engines and 8 kw Kohler generator. Copacetic is a Great Loop veteran and is outfitted to do it again or other coastal cruising.

Recent upgrades and maintenance includes:

- New Bottom Paint
- New MarTek Davit System
- New Raymarine AIS 650
- New Vinyl Teak and Holly Flooring Throughout
- New Exhaust Hose
- New Intake Hose
- New Searchlight
- New Arm Rests on all Captains Chairs

Basic Information

Category: Trawler Yacht

Model Year: 2006

Year Built: 2006

Country: United States

Dimensions

LOA: 34' (10.36mm)

Beam: 14.25

Max Draft: 3' 4" (1.02mm)

Speed, Capacities and Weight

Cruise Speed: 8 Knots Kts. (9 MPH)

Max Speed: 13 Knots Kts. (15 MPH)

Water Capacity: 70 Gallons

Holding Tank: 34 Gal Gallons

Fuel Capacity: 270 Gal Gallons

Accommodations

Total Cabins: 1

Total Heads: 1

Hull and Deck Information

Hull Material: Fiberglass

Engine Information

Engines: 1

Manufacturer: Yanmar

Engine Type: Inboard

Fuel Type: Diesel

PHOTOS

1_2795293_port_profile



2_2795293_port_stern_profile



3_2795293_stern_profile



4_2795293_port_bow_profile



5_2795293_bow_profile



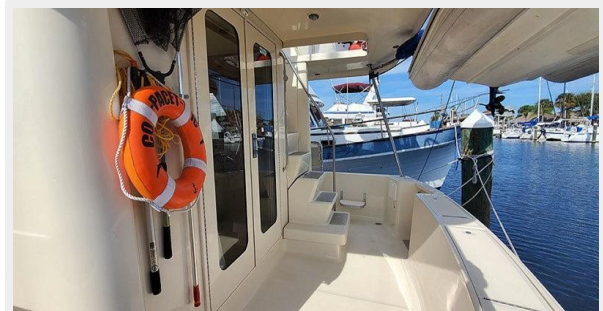
6_2795293_starboard_bow_profile



7_2795293_cockpit_port



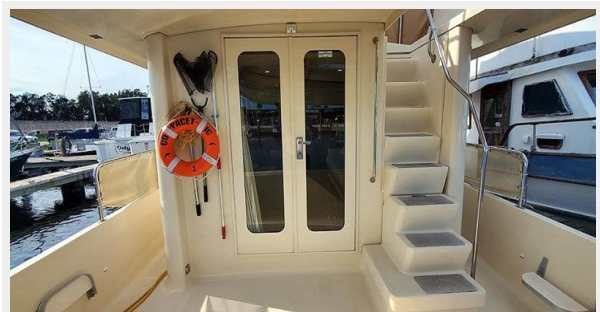
8_2795293_cockpit_starboard



9_2795293_engine_room_access



10_2795293_cockpit_forward



11_2795293_salon_forward



12_2795293_salon_port



13_2795293_salon_starboard



14_2795293_salon_helm_wide



15_2795293_salon_helm



16_2795293_salon_aft



17_2795293_galley_forward



18_2795293_galley_port



20_2795293_master_stateroom_forward



19_2795293_galley_aft



21_2795293_master_stateroom_port



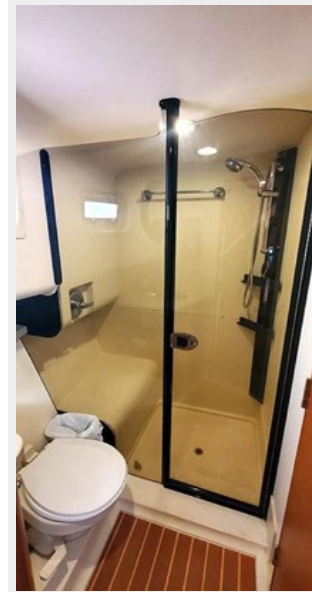
22_2795293_master_stateroom_starboard



23_2795293_head_vanity_and_toilet



24_2795293_head_toilet_and_shower



25_2795293_flybridge_forward



26_2795293_flybridge_port



27_2795293_flybridge_starboard



28_2795293_flybridge_helm_wide



29_2795293_flybridge_helm



30_2795293_flybridge_aft



31_2795293_flybridge_aft_deck_port_aft



32_2795293_flybridge_aft_deck_port_forward



33_2795293_flybridge_aft_deck_starboard_af



34_2795293_flybridge_aft_deck_starboard_fo



35_2795293_sidewalk_port



36_2795293_sidewalk_starboard



37_2795293_fore_deck_forward



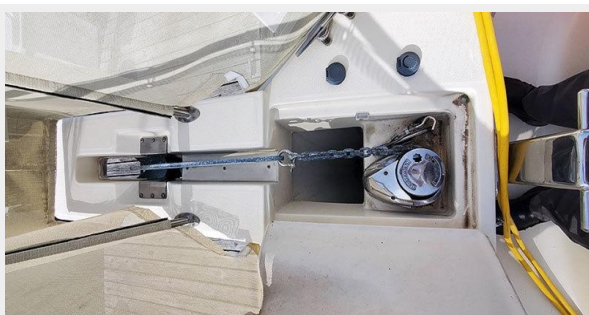
38_2795293_bow_pulpit



40_2795293_fore_deck_aft



39_2795293_ground_tackle



41_2795293_tender_and_davit



42_2795293_outboard



43_2795293_engine_room_forward



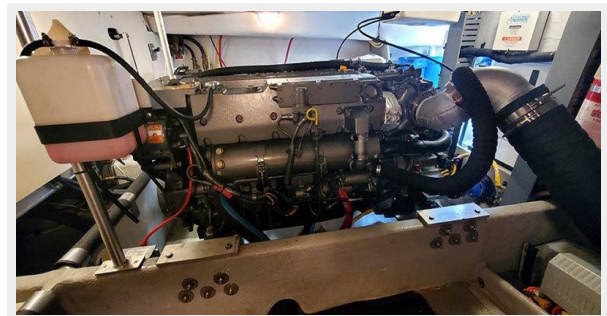
44_2795293_engine_room_port_aft



45_2795293_engine_room_starboard_forward



46_2795293_main_engine_port



47_2795293_main_engine_starboard



48_2795293_main_engine_fuel_filter



49_2795293_generator_fuel_filter



50_2795293_oil_changer



51_2795293_fire_suppression



52_2795293_dripless_shaft_seal



53_2795293_water_heater



54_2795293_central_vacuum



55_2795293_generator



56_2795293_battery_charger



57_2795293_battery_bank_1



58_2795293_battery_bank_2



59_2795293_electrical_panel



CONTACTS

Andrey Shestakov, leading yacht broker of the sales department of Shestakov Yacht Sales Inc. Shestakov Yacht Sales Inc., the official representative of the Miami/Fort Lauderdale FL headquarters.

Contact details

Email: andrey@shestakovyachtsales.com

Web: shestakovyachtsales.com/en/

Telephones

USA: +1(954)274-4435

Office hours

Monday – Saturday: **9:00 - 21:00 EDT**

Sunday: **closed**

Address



Harbour Towne Marina, 850 NE 3rd St,
STE 213, Dania, FL 33004