

SEA WINGS — CRUISERS YACHTS



Builder: CRUISERS YACHTS

LOA: 48' (14.63mm)

Year Built: 2014

Model: cruiser

Price: \$560,000 USD

Location: United States

Our experienced yacht broker, Andrey Shestakov, will help you choose and buy a yacht that best suits your needs **Sea Wings — CRUISERS YACHTS** from our catalogue. Presently, at Shestakov Yacht Sales Inc., we have a wide variety of yachts available on our sale's list. We also work in close contact with all the big yacht manufacturers from all over the world.

If you would like to buy a yacht **Sea Wings — CRUISERS YACHTS** or would like help answering any questions concerning purchasing, selling or chartering a yacht, please call **+1(954)274-4435**

TABLE OF CONTENTS

TABLE OF CONTENTS	2
SPECIFICATIONS	5
Overview	5
Basic Information	6
Dimensions	6
Speed, Capacities and Weight	6
Accommodations	6
Hull and Deck Information	6
Engine Information	6
PHOTOS	7
SW2	7
SW3	7
SW4	7
SW5	7
SW6	7
SW7	7
SW8	8
SW9	8
SW10	8
SW11	8
SW12	8
SW13	8
SW14	9
SW15	9
SW16	9
SW17	9
SW18	9
SW19	9

SW20	10
SW21	10
SW22	10
SW23	10
SW24	10
SW25	10
SW26	11
SW27	11
SW28	11
SW29	11
SW30	11
SW31	11
SW33	12
SW32	12
SW34	12
SW35	12
SW36	13
SW37	13
SW38	13
SW39	13
SW40	13
SW41	13
SW42	14
SW43	14
SW44	14
SW45	14
SW46	14
SW47	14
SW48	15

SW49	15
SW50	15
CONTACTS	16
Contact details	16
Telephones	16
Office hours	16
Address	16

SPECIFICATIONS

Overview

48' | Cruisers 48 Cantius | 2014

Super clean, LLC owned

This Cruisers 48 Cantius has been well-maintained by both the current and previous owner. She features a very spacious coupe style layout with an upper salon/helm area and lower salon/galley area. The opening sunroof and large sliding cockpit doors give the perfect indoor/outdoor feeling which is great for entertaining.

The centerline master cabin is also spacious with a walk-around queen size bed and lots of closet space. The master head also features a large separate shower stall. The forward VIP cabin also has a semi-walk around queen size bed and closet space for two guests.

This Cruisers also comes equipped with hydraulic swim platform that carries a 10' tender which is great for shuttling two and from the boat while at port or anchor.

One of the best features of the this model is the enormous engine room. You can practically stand up inside which is rare for this size vessel. Servicing the engines, pod, or generator is super easy with all the extra space. The pod drives and joystick controls make this boat super easy to dock or operate in tight quarters.

This is the perfect yacht for a couple or family to cruise the CA coastline. For more information or to schedule a showing contact the listing broker directly by text, phone, or email anytime.

Special Features:

- LLC owned
- Hydraulic Swim Platform for easy dinghy stowage
- 10' Zodiac inflatable tender w/ 25hp Yamaha
- Volvo Penta IPS 600 engine w/ pod drives - 500 hours
- Kohler Diesel Generator - 300 hours
- KVH Satellite television - DISH network
- Opening Sunroof in the Salon
- Electric SunShade that extends over the cockpit
- Combo Washer/Dryer Unit
- x3 Units of Air-Conditioning and Heating
- Electric Grill, Ice-maker, and Refrigerator in the Cockpit
- Flexi-teak in the cockpit sole - no real wood to maintain
- Click on Full Specifications for all the other features!

Basic Information

Category: cruiser

Sub Category: Express

Model Year: 2014

Year Built: 2014

Country: United States

Dimensions

LOA: 48' (14.63mm)

Speed, Capacities and Weight

Water Capacity: 80 Gallons

Holding Tank: 50 Gal Gallons

Fuel Capacity: 175 Gal Gallons

Accommodations

Total Cabins: 2

Total Heads: 2

Hull and Deck Information

Hull Material: Fiberglass

Engine Information

Engines: 2

Manufacturer: Volvo

Engine Type: Inboard

Fuel Type: Diesel

PHOTOS

SW2



SW3



SW4



SW5



SW6



SW7



SW8



SW9



SW10



SW11



SW12



SW13



SW14



SW15



SW16



SW17



SW18



SW19



SW20



SW21



SW22



SW23



SW24



SW25



SW26



SW27



SW28



SW29



SW30



SW31



SW32



SW33



SW34



SW35



SW36



SW37



SW38



SW39



SW40



SW41



SW42



SW43



SW44



SW45



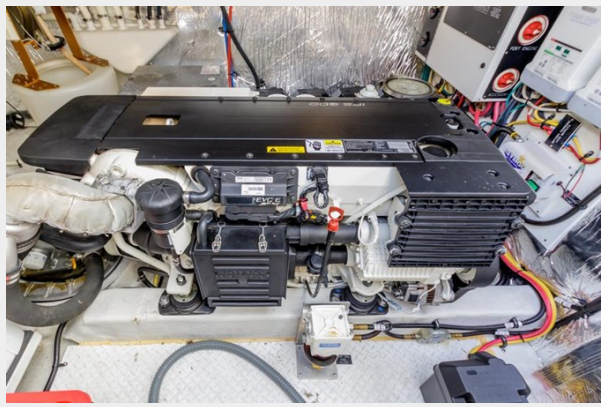
SW46



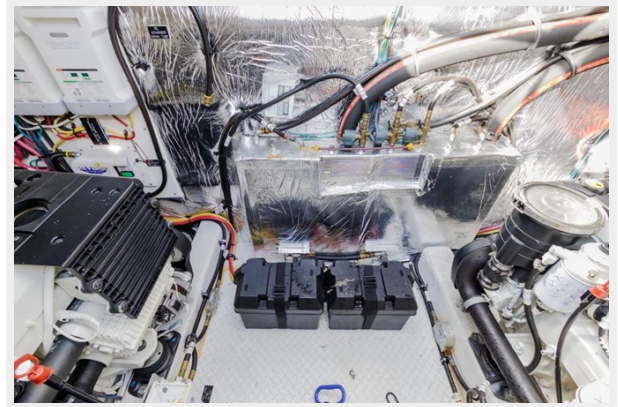
SW47



SW48



SW49



SW50



CONTACTS

Andrey Shestakov, leading yacht broker of the sales department of Shestakov Yacht Sales Inc. Shestakov Yacht Sales Inc., the official representative of the Miami/Fort Lauderdale FL headquarters.

Contact details

Email: andrey@shestakovyachtsales.com

Web: shestakovyachtsales.com/en/

Telephones

USA: +1(954)274-4435

Office hours

Monday – Saturday: **9:00 - 21:00** EDT

Sunday: **closed**

Address



Harbour Towne Marina, 850 NE 3rd St,
STE 213, Dania, FL 33004