

A SULANA — HOLLAND JACHTBOUW



Builder: HOLLAND JACHTBOUW

Year Built: 2006

Model: Cruising Sailboat

Price: PRICE ON APPLICATION

Location: Spain

LOA: 121' 5" (37mm)

Beam: 26.73

Min Draft: 4' 4" (1.31mm)

Max Draft: 14' (4.27mm)

Cruise Speed: 11 Knots Kts. (13 MPH)

Max Speed: 12 Knots Kts. (14 MPH)

Our experienced yacht broker, Andrey Shestakov, will help you choose and buy a yacht that best suits your needs **A Sulana — HOLLAND JACHTBOUW** from our catalogue. Presently, at Shestakov Yacht Sales Inc., we have a wide variety of yachts available on our sale's list. We also work in close contact with all the big yacht manufacturers from all over the world.

If you would like to buy a yacht **A Sulana — HOLLAND JACHTBOUW** or would like help answering any questions concerning purchasing, selling or chartering a yacht, please call **+1(954)274-4435**

TABLE OF CONTENTS

TABLE OF CONTENTS	2
SPECIFICATIONS	3
Overview	3
Basic Information	3
Dimensions	3
Speed, Capacities and Weight	4
Accommodations	4
Hull and Deck Information	4
Engine Information	4
PHOTOS	5
A Sulana	5
Deck	5
Main Salon	6
Owner's suite	6
Twin cabin	6
CONTACTS	8
Contact details	8
Telephones	8
Office hours	8
Address	8

SPECIFICATIONS

Overview

The 37-metre sloop S/Y "A SULANA" is the realization of a dream brought to life at the hands of Holland Jachtbouw in conjunction with British Naval Architect Bill Dixon. Attention to the small details lay at the heart of this bespoke custom build, whereby no aspect of the design has been overlooked to ensure that she delivers from an operational standpoint for the most demanding of owners and crew.

Her sailing performance is no accident, it is the result of significant amounts of design time and tank testing to prove the concept and above the water a carefully thought through rig and sail inventory. The hull design has been optimized to ensure that the keel and ballast bulb provide the maximum lift, stability and efficiency in accordance with the design brief.

Regarding the interior, John Munford, the World renowned superyacht interior designer was selected for the build following an extensive consultation process. S/Y "A SULANA" delivers on the Owners brief for a modern, yet warm interior, combining the finest pear and wenge woods with fabric and leather finishes. Exceptional build quality and finishes have been used throughout, a prerequisite for a yacht capable of cruising the Oceans of the World in comfort and style.

Basic Information

Category: Cruising Sailboat

Model Year: 2006

Year Built: 2006

Country: Spain

Dimensions

LOA: 121' 5" (37mm)

LWL: 102' 9" (31.3mm)

Beam: 26.73

Min Draft: 4' 4" (1.31mm)

Max Draft: 14' (4.27mm)

Speed, Capacities and Weight

Cruise Speed: 11 Knots Kts. (13 MPH)

Max Speed: 12 Knots Kts. (14 MPH)

Gross Tonnage: 91 Pounds

Water Capacity: 4000 Gallons

Fuel Capacity: 3698.41 Gal Gallons

Accommodations

Total Cabins: 3

Sleeps: 7

Crew Cabin: 5

Hull and Deck Information

Hull Material: Alustar

Deck Material: Teak

Hull Designer: Dixon Yacht Design

Exterior Designer: Dixon Yacht Design

Interior Designer: John Munford Design

Engine Information

Engines: 1

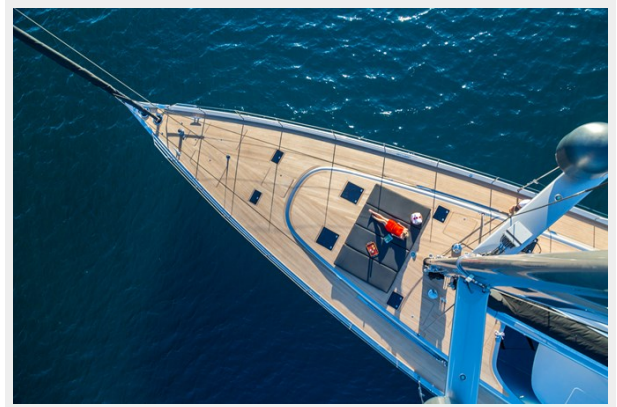
Manufacturer: Alaska Diesel

PHOTOS

A Sulana



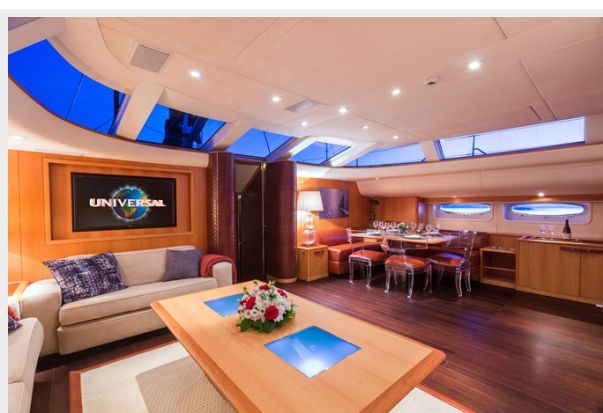
Deck



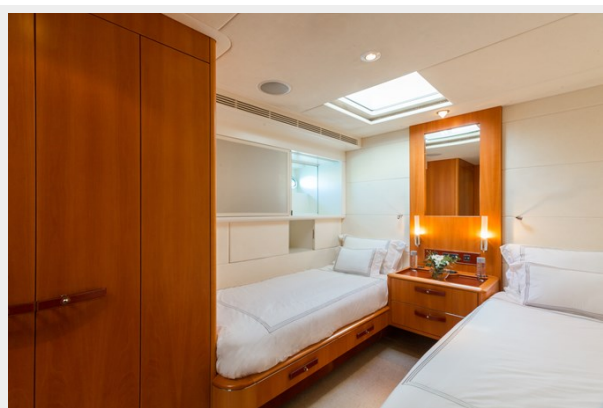
Main Salon



Owner's suite



Twin cabin





CONTACTS

Andrey Shestakov, leading yacht broker of the sales department of Shestakov Yacht Sales Inc. Shestakov Yacht Sales Inc., the official representative of the Miami/Fort Lauderdale FL headquarters.

Contact details

Email: andrey@shestakovyachtsales.com

Web: shestakovyachtsales.com/en/

Telephones

USA: +1(954)274-4435

Office hours

Monday – Saturday: **9:00 - 21:00** EDT

Sunday: **closed**

Address



Harbour Towne Marina, 850 NE 3rd St,
STE 213, Dania, FL 33004