

G2 — VITTERS



Builder: VITTERS

Year Built: 2009

Model: Cruising or Racing Sailboat

Price: PRICE ON APPLICATION

Location: Spain

LOA: 128' (39mm)

Beam: 27.49

Min Draft: 12' 6" (3.8mm)

Max Draft: 19' 9" (6mm)

Cruise Speed: 10 Knots Kts. (12 MPH)

Max Speed: 16 Knots Kts. (18 MPH)

Our experienced yacht broker, Andrey Shestakov, will help you choose and buy a yacht that best suits your needs **G2 — VITTERS** from our catalogue. Presently, at Shestakov Yacht Sales Inc., we have a wide variety of yachts available on our sale's list. We also work in close contact with all the big yacht manufacturers from all over the world.

If you would like to buy a yacht **G2 — VITTERS** or would like help answering any questions concerning purchasing, selling or chartering a yacht, please call **+1(954)274-4435**

TABLE OF CONTENTS

TABLE OF CONTENTS	2
SPECIFICATIONS	3
Overview	3
Basic Information	3
Dimensions	3
Speed, Capacities and Weight	4
Accommodations	4
Hull and Deck Information	4
Engine Information	4
PHOTOS	5
G2	5
Deck	5
Owner suit	6
VIP cabin	6
Guest twin cabin	7
CONTACTS	8
Contact details	8
Telephones	8
Office hours	8
Address	8

SPECIFICATIONS

Overview

Setting the benchmark” is a phrase easily said; however, in the case of S/Y “G2”, it accurately describes the level of design, thought, process and investment that has gone into the design and evolution of this groundbreaking Yacht. Delivered by Vitters Shipyard in 2009 and fully redesigned and optimised in 2017/2018 & 2021/2022, “G2” is a state-of-the-art world cruising performance sailing yacht from arguably the worlds foremost Naval Architect, Bill Tripp of Tripp Design. “G2” features a new luxury interior by Nauta Design in a light, simple, clean and balanced design. Nauta’s new scheme encourages modern, open-plan living by opening up the main salon with various socialising spaces, which ideally complements her four generous guest cabins.

“G2” has been constantly maintained and upgraded; she is presented in immaculate condition and is categorically the standout performance Yacht on the market today.

Basic Information

Category: Cruising or Racing Sailboat

Model Year: 2009

Year Built: 2009

Refit Type: rebuilt

Country: Spain

Dimensions

LOA: 128' (39mm)

Beam: 27.49

Min Draft: 12' 6" (3.8mm)

Max Draft: 19' 9" (6mm)

Speed, Capacities and Weight

Cruise Speed: 10 Knots Kts. (12 MPH)

Cruise Speed Range: 2000

Max Speed: 16 Knots Kts. (18 MPH)

Gross Tonnage: 171 Pounds

Water Capacity: 12000 Gallons

Fuel Capacity: 3037.98 Gal Gallons

Accommodations

Total Cabins: 4

Sleeps: 8

Total Heads: 4

Crew Cabin: 6

Crew Heads: 3

Hull and Deck Information

Hull Material: Carbon Composite

Deck Material: Teak

Exterior Designer: Tripp Design Naval
Architecture

Interior Designer: Nauta Design

Engine Information

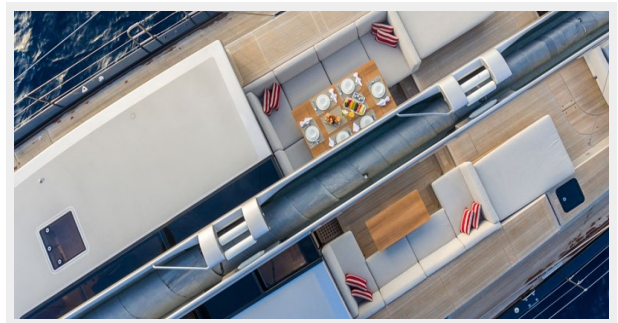
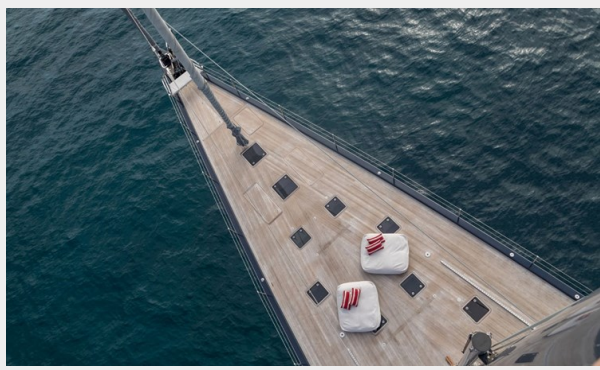
Engines: 1

Manufacturer: Cummins

PHOTOS



G2



Deck



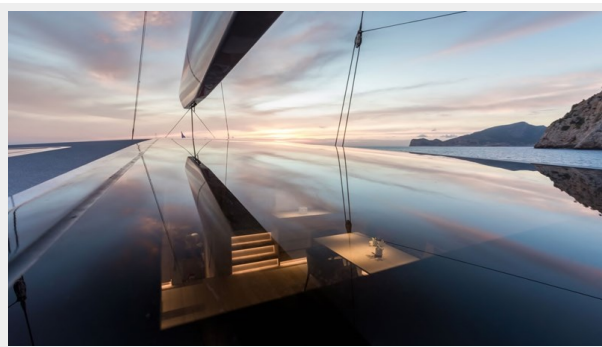


Owner suit

VIP cabin



Guest twin cabin



CONTACTS

Andrey Shestakov, leading yacht broker of the sales department of Shestakov Yacht Sales Inc. Shestakov Yacht Sales Inc., the official representative of the Miami/Fort Lauderdale FL headquarters.

Contact details

Email: andrey@shestakovyachtsales.com

Web: shestakovyachtsales.com/en/

Telephones

USA: +1(954)274-4435

Office hours

Monday – Saturday: **9:00 - 21:00** EDT

Sunday: **closed**

Address



Harbour Towne Marina, 850 NE 3rd St,
STE 213, Dania, FL 33004