

MINI K — EXTRA YACHTS



Builder: EXTRA YACHTS

Year Built: 2019

Model: Motor Yacht

Price: PRICE ON APPLICATION

Location: Italy

LOA: 86' 4" (26.3mm)

Beam: 19.02

Max Draft: 5' 9" (1.75mm)

Cruise Speed: 24 Knots Kts. (28 MPH)

Max Speed: 30 Knots Kts. (35 MPH)

Our experienced yacht broker, Andrey Shestakov, will help you choose and buy a yacht that best suits your needs **MINI K — EXTRA YACHTS** from our catalogue. Presently, at Shestakov Yacht Sales Inc., we have a wide variety of yachts available on our sale's list. We also work in close contact with all the big yacht manufacturers from all over the world.

If you would like to buy a yacht **MINI K — EXTRA YACHTS** or would like help answering any questions concerning purchasing, selling or chartering a yacht, please call **+1(954)274-4435**

TABLE OF CONTENTS

TABLE OF CONTENTS	2
SPECIFICATIONS	4
Overview	4
Basic Information	5
Dimensions	5
Speed, Capacities and Weight	5
Accommodations	5
Hull and Deck Information	6
Engine Information	6
PHOTOS	7
X86 fast refitted 2023	7
X86 fast refitted 2023	7
X86 fast refitted 2023	7
X86 fast refitted 2023	7
X86 fast refitted 2023	7
X86 fast refitted 2023	7
X86 fast refitted 2023	8
X86 fast refitted 2023	8
X86 fast refitted 2023	8
X86 fast refitted 2023	8
X86 fast refitted 2023	8
X86 fast refitted 2023	8
X86 fast refitted 2023	8
X86 fast refitted 2023	9
X86 fast refitted 2023	9
X86 fast refitted 2023	9
X86 fast refitted 2023	9
X86 fast refitted 2023	9

X86 fast refitted 2023	10
X86 fast refitted 2023	10
X86 fast refitted 2023	10
X86 fast refitted 2023	10
X86 fast refitted 2023	10
X86 fast refitted 2023	10
CONTACTS	11
Contact details	11
Telephones	11
Office hours	11
Address	11

SPECIFICATIONS

Overview

- Refitted in 2023
- Warranty: 1 year
- One Owner
- Availability --> March 2023 ex Ancona Italy

Exceptional volumes, comfort of a villa on the sea, low consumption, long range and layouts that facilitate direct contact with the sea: these are the distinctive elements of this Extra 86ft Fast designed by Francesco Guida.

The eye-catching design of the profile expresses its marked personality, immediately standing out for its uniqueness. A refined play of contrasts between the clear and soft white surfaces of fiberglass and the elegant dark windows. The generous windows, without interruption, offer the magical sensation of being inside a large crystal dome.

Cruising in harmony with nature means respect for the environment. Efficiency in terms of consumption is also given by the photo-voltaic cells incorporated in the glazed surfaces of the saloon, to generate clean power. Cells are applied to recharge the service batteries, so that equipment like lights and appliances can be used without turning the genset on at anchor, leaving the soundtrack on nature.

The fly deck offers a second wheelhouse, a full-beam maxi-sundeck and a bar serving a living area with a C-shaped sofa, to fully enjoy from an elevated position long and pleasant crossings or convivial lunches at anchor.

The layout design revolves around the desire to guarantee maximum liveability everywhere on board: an example is the exceptional beach club of over 50 square meters, enabling guests to have pleasure of living comfortably in contact with the sea. The cockpit is spread over three levels sloping towards the water.

The layout of the living area includes the galley situated aft which, through a large and bright window with an automatic up/down system, allows direct communication with the outdoor dining area. This modern and innovative solution allows to have a full-beam living room forward, furnished with large sofas and an extendable table, for a contemporary and refined design.

This 26-metre boat can accommodate up to 8 people in 4 cabins. The full-beam owner's cabin features a special entrance area for privacy sake and includes a convenient walk-in closet as well as an en-suite bathroom with twin basins and separate shower. The arrangement of the basin area enhances the cabin's depth increasing the comfort of the whole suite.

The VIP Cabin is positioned forward, with the closets and shielding conveniently placed in order to perfectly insulate these spaces from the crew area.

Two central twin cabins complete the lower deck layout, offering the same stylish and modern look of the other cabins, based on the combination of light colours and precious materials.

Basic Information

Category: Motor Yacht

Sub Category: Motor Yacht

Model Year: 2019

Year Built: 2019

Country: Italy

Dimensions

LOA: 86' 4" (26.3mm)

Beam: 19.02

Max Draft: 5' 9" (1.75mm)

Speed, Capacities and Weight

Cruise Speed: 24 Knots Kts. (28 MPH)

Max Speed: 30 Knots Kts. (35 MPH)

Water Capacity: 1500 Gallons

Holding Tank: 158.5 Gal Gallons

Fuel Capacity: 1981.29 Gal Gallons

Accommodations

Total Cabins: 4

Crew Cabin: 4

Crew Berths: 4

Hull and Deck Information

Hull Material: Fiberglass

Exterior Designer: GUIDA DESIGN

Interior Designer: GUIDA DESIGN

Engine Information

Engines: 2

Manufacturer: Volvo Penta

PHOTOS

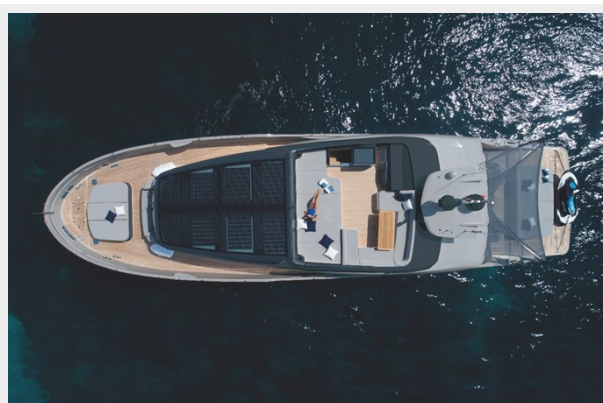
X86 fast refitted 2023



X86 fast refitted 2023



X86 fast refitted 2023



X86 fast refitted 2023



X86 fast refitted 2023

X86 fast refitted 2023



X86 fast refitted 2023



X86 fast refitted 2023



X86 fast refitted 2023



X86 fast refitted 2023



X86 fast refitted 2023



X86 fast refitted 2023



X86 fast refitted 2023



X86 fast refitted 2023



X86 fast refitted 2023



X86 fast refitted 2023



X86 fast refitted 2023



X86 fast refitted 2023



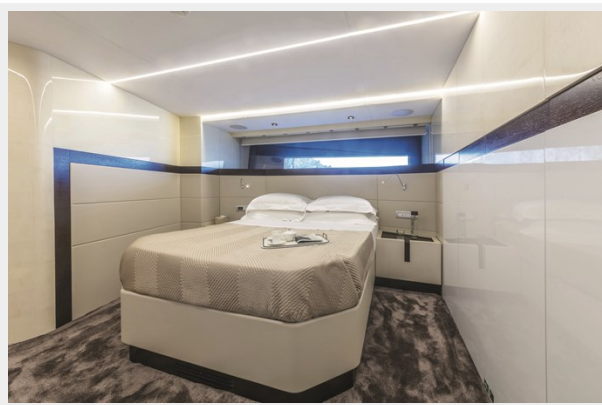
X86 fast refitted 2023



X86 fast refitted 2023



X86 fast refitted 2023



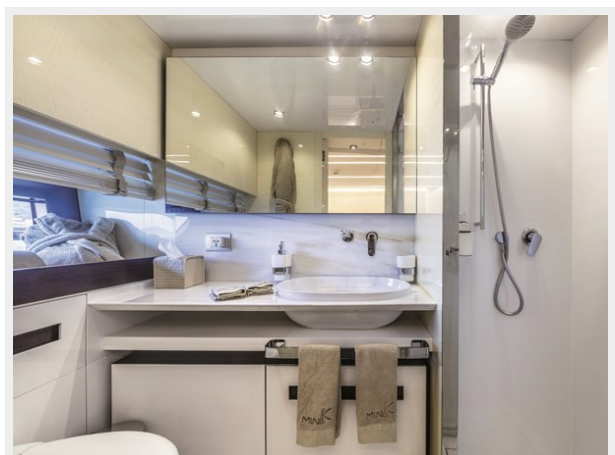
X86 fast refitted 2023



X86 fast refitted 2023



X86 fast refitted 2023



CONTACTS

Andrey Shestakov, leading yacht broker of the sales department of Shestakov Yacht Sales Inc. Shestakov Yacht Sales Inc., the official representative of the Miami/Fort Lauderdale FL headquarters.

Contact details

Email: **andrey@shestakovyachtsales.com**

Web: shestakovyachtsales.com/en/

Telephones

USA: **+1(954)274-4435**

Office hours

Monday – Saturday: **9:00 - 21:00 EDT**

Sunday: **closed**

Address



Harbour Towne Marina, 850 NE 3rd St,
STE 213, Dania, FL 33004