

## JUIL OF THE SEA — PRESTIGE



**Builder:** PRESTIGE

**Year Built:** 2016

**Model:** Flybridge

**Price:** PRICE ON APPLICATION

**Location:** United States

**LOA:** 70' 4" (21.44mm)

**Beam:** 17.41

**Min Draft:** 5' 2" (1.57mm)

**Cruise Speed:** 25 Knots Kts. (29 MPH)

**Max Speed:** 30 Knots Kts. (35 MPH)

Our experienced yacht broker, Andrey Shestakov, will help you choose and buy a yacht that best suits your needs **JUIL OF THE SEA — PRESTIGE** from our catalogue. Presently, at Shestakov Yacht Sales Inc., we have a wide variety of yachts available on our sale's list. We also work in close contact with all the big yacht manufacturers from all over the world.

If you would like to buy a yacht **JUIL OF THE SEA — PRESTIGE** or would like help answering any questions concerning purchasing, selling or chartering a yacht, please call **+1(954)274-4435**

# TABLE OF CONTENTS

TABLE OF CONTENTS	2
SPECIFICATIONS	4
Overview	4
Basic Information	4
Dimensions	4
Speed, Capacities and Weight	4
Accommodations	5
Hull and Deck Information	5
Engine Information	5
PHOTOS	6
STBD PROFILE	6
STBD PROFILE	6
FLYBRIDGE HELM	6
FLYBRIDGE AFT DINNING	6
FLYBRIDGE DECK	6
FLYBRIDGE AFT DINNING	6
FLYBRIDGE HELM	7
BOW SUN PAD	7
MAIN SALON	7
GALLEY	7
SALON LOUNGE	7
SALON TV	7
HELM	8
MASTER CABIN	8
VIP CABIN	8
VIP CABIN	8
VIP HEAD	8
STBD TWIN	8

---

TENDER	9
MAIN DECK DINNING	9
MAINDECK	9
ENGINE ROOM	9
OVERVIEW PROFILE	9
PORT PROFILE	9
STBD AFT PROFILE	10
PORT PROFILE	10
CONTACTS	11
Contact details	11
Telephones	11
Office hours	11
Address	11

---

# SPECIFICATIONS

---

## Overview

---

The PRESTIGE 680 comprises all the key points that have made the PRESTIGE line a success, as well as some of the excellent qualities of the PRESTIGE 750.

She features an interior design synonymous with light, space, ease of movement and privacy.

With bold, timeless lines and high-quality materials, fit and finish, the PRESTIGE 680 offers the same technical attributes found throughout the line, while also benefitting from the latest innovations. Specifically designed to be equipped with an IPS 1200 engine, the PRESTIGE 680 offers enjoyable, comfortable cruising.

## Basic Information

---

**Category:** Flybridge

**Sub Category:** Flybridge

**Model Year:** 2016

**Year Built:** 2016

**Country:** United States

## Dimensions

---

**LOA:** 70' 4" (21.44mm)

**LWL:** 63' 7" (19.38mm)

**Beam:** 17.41

**Min Draft:** 5' 2" (1.57mm)

## Speed, Capacities and Weight

---

**Cruise Speed:** 25 Knots Kts. (29 MPH)

**Max Speed:** 30 Knots Kts. (35 MPH)

**Gross Tonnage:** 83 Pounds

**Water Capacity:** 200 Gallons

**Holding Tank:** 100 Gal Gallons

**Fuel Capacity:** 911 Gal Gallons

**Fuel Consumption:** 50 Gal Gallons

---

## Accommodations

---

**Total Cabins:** 4

**Total Berths:** 6

**Sleeps:** 8

**Total Heads:** 4

**Crew Cabin:** 2

**Crew Berths:** 2

**Crew Heads:** 1

---

## Hull and Deck Information

---

**Hull Material:** Fiberglass

**Deck Material:** Teak

**Hull Configuration:** Planing

**Hull Color:** Whisper Grey

**Exterior Designer:** J&J Design & Garroni

---

## Engine Information

---

**Engines:** 2

**Manufacturer:** Volvo Penta

**Engine Type:** Inboard

**Fuel Type:** Diesel

# PHOTOS

**STBD PROFILE**



**STBD PROFILE**



**FLYBRIDGE HELM**



**FLYBRIDGE AFT DINNING**



**FLYBRIDGE DECK**



**FLYBRIDGE AFT DINNING**



### FLYBRIDGE HELM



### BOW SUN PAD



### MAIN SALON



### GALLEY



### SALON LOUNGE



### SALON TV



**HELM**



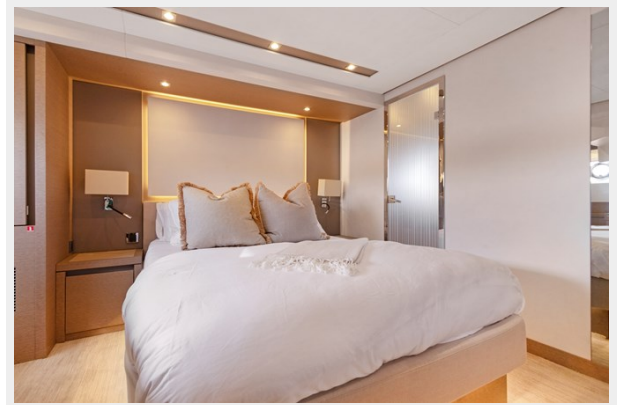
**MASTER CABIN**



**VIP CABIN**



**VIP CABIN**



**VIP HEAD**



**STBD TWIN**





### TENDER



### MAIN DECK DINNING



### MAINDECK



### ENGINE ROOM



### OVERVIEW PROFILE



### PORT PROFILE



## STBD AFT PROFILE



## PORT PROFILE



# CONTACTS

---

Andrey Shestakov, leading yacht broker of the sales department of Shestakov Yacht Sales Inc. Shestakov Yacht Sales Inc., the official representative of the Miami/Fort Lauderdale FL headquarters.

## Contact details

---

Email: [andrey@shestakovyachtsales.com](mailto:andrey@shestakovyachtsales.com)

Web: [shestakovyachtsales.com/en/](http://shestakovyachtsales.com/en/)

## Telephones

---

USA: +1(954)274-4435

## Office hours

---

Monday – Saturday: **9:00 - 21:00** EDT

Sunday: **closed**

## Address

---



Harbour Towne Marina, 850 NE 3rd St,  
STE 213, Dania, FL 33004