

## SWEET DREAM — BENETEAU



**Builder:** BENETEAU

**Year Built:** 2020

**Model:** Trawler Yacht

**Price:** PRICE ON APPLICATION

**Location:** United States

**LOA:** 50' (15.24mm)

**Beam:** 15.25

**Max Draft:** 3' 5" (1.04mm)

Our experienced yacht broker, Andrey Shestakov, will help you choose and buy a yacht that best suits your needs **Sweet Dream — BENETEAU** from our catalogue. Presently, at Shestakov Yacht Sales Inc., we have a wide variety of yachts available on our sale's list. We also work in close contact with all the big yacht manufacturers from all over the world.

If you would like to buy a yacht **Sweet Dream — BENETEAU** or would like help answering any questions concerning purchasing, selling or chartering a yacht, please call **+1(954)274-4435**

---

# TABLE OF CONTENTS

---

|                              |    |
|------------------------------|----|
| TABLE OF CONTENTS            | 2  |
| SPECIFICATIONS               | 3  |
| Overview                     | 3  |
| Basic Information            | 3  |
| Dimensions                   | 3  |
| Speed, Capacities and Weight | 3  |
| Accommodations               | 4  |
| Hull and Deck Information    | 4  |
| Engine Information           | 4  |
| PHOTOS                       | 5  |
| CONTACTS                     | 14 |
| Contact details              | 14 |
| Telephones                   | 14 |
| Office hours                 | 14 |
| Address                      | 14 |

---

# SPECIFICATIONS

---

## Overview

---

This 2020 Beneteau 50 Swift Trawler has been very well cared for by her knowledgeable owner who spared no expense upgrading her and keeping her in excellent condition. She is equipped with all the comforts of a home on the water, and she offers stress-free docking thanks to her IPS 600s and 3 joystick locations. Some notable options are:

- Great Loop Trim Level
- 3 Joystick Docking Stations (Cockpit, Lower Helm, Upper Helm)
- 2019 Gala Atlantis A330 Tender w/ 20 hp Tohatsu outboard
- Underwater Lights
- Hydraulic Swim Platform
- Washer/dryer Combo
- 3 Cabin / 2 Head Layout
- Dishwasher in Galley
- Bow Thruster
- Tropical AC package with 60,000 BTUs
- Pearl Grey Hull Color

## Basic Information

---

**Category:** Trawler Yacht

**Model Year:** 2020

**Year Built:** 2020

**Country:** United States

## Dimensions

---

**LOA:** 50' (15.24mm)

**Beam:** 15.25

**Max Draft:** 3' 5" (1.04mm)

## Speed, Capacities and Weight

---

**Water Capacity:** 112 Gallons

**Fuel Capacity:** 714 Gal Gallons

---

## Accommodations

---

**Total Cabins:** 3

**Total Heads:** 2

---

## Hull and Deck Information

---

**Hull Material:** Fiberglass

---

## Engine Information

---

**Engines:** 2

**Manufacturer:** Volvo

**Engine Type:** Inboard

**Fuel Type:** Diesel

# PHOTOS





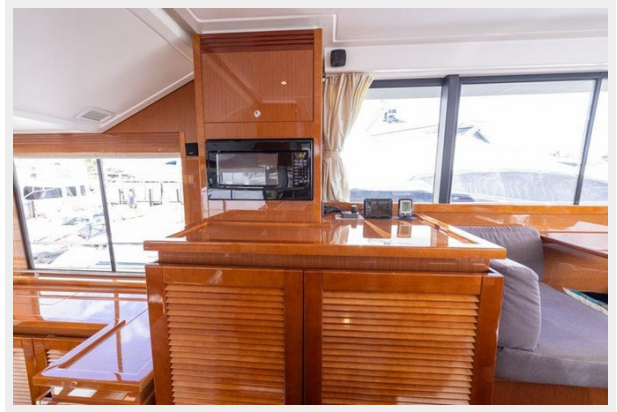


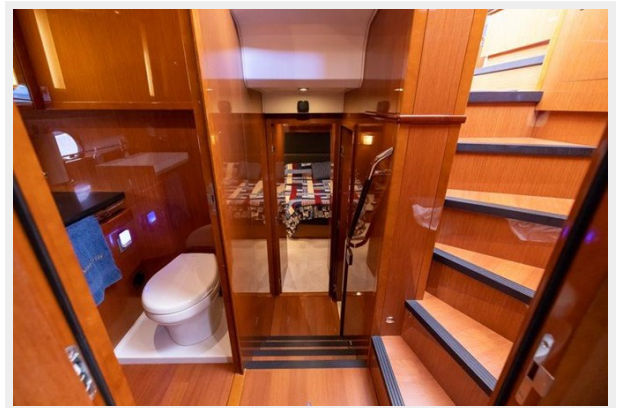














# CONTACTS

---

Andrey Shestakov, leading yacht broker of the sales department of Shestakov Yacht Sales Inc. Shestakov Yacht Sales Inc., the official representative of the Miami/Fort Lauderdale FL headquarters.

## Contact details

---

Email: [andrey@shestakovyachtsales.com](mailto:andrey@shestakovyachtsales.com)

Web: [shestakovyachtsales.com/en/](http://shestakovyachtsales.com/en/)

## Telephones

---

USA: +1(954)274-4435

## Office hours

---

Monday – Saturday: **9:00 - 21:00** EDT

Sunday: **closed**

## Address

---



Harbour Towne Marina, 850 NE 3rd St,  
STE 213, Dania, FL 33004