

## WILDEST DREAMS 2 — REGAL



**Builder:** REGAL

**Year Built:** 2011

**Model:** Motor Yacht

**Price:** PRICE ON APPLICATION

**Location:** United States

**LOA:** 42' 4" (12.9mm)

**Beam:** 13

**Max Draft:** 3' 5" (1.04mm)

**Cruise Speed:** 23.46 Knots Kts. (27 MPH)

Our experienced yacht broker, Andrey Shestakov, will help you choose and buy a yacht that best suits your needs **Wildest Dreams 2 — REGAL** from our catalogue. Presently, at Shestakov Yacht Sales Inc., we have a wide variety of yachts available on our sale's list. We also work in close contact with all the big yacht manufacturers from all over the world.

If you would like to buy a yacht **Wildest Dreams 2 — REGAL** or would like help answering any questions concerning purchasing, selling or chartering a yacht, please call **+1(954)274-4435**

# TABLE OF CONTENTS

TABLE OF CONTENTS	2
SPECIFICATIONS	5
Overview	5
Basic Information	5
Dimensions	5
Speed, Capacities and Weight	5
Accommodations	5
Hull and Deck Information	6
Engine Information	6
PHOTOS	7
2	7
3	7
4	7
5	7
6	7
7	7
8	8
9	8
10	8
11	8
12	8
13	8
14	9
15	9
16	9
17	9
18	9
19	9

20	10
21	10
22	10
23	10
24	10
25	10
26	11
27	11
28	11
29	11
30	11
31	11
32	12
33	12
34	12
35	12
36	12
37	12
38	13
39	13
40	13
41	13
42	13
43	13
44	14
<b>CONTACTS</b>	<b>15</b>
Contact details	15
Telephones	15
Office hours	15

---

Address

15

---

---

# SPECIFICATIONS

---

## Overview

---

The **Regal 42 Sport Coupe** is a beautifully designed European-Style Express with an enclosed, Climate Controlled helm that converts easily to an open top Cruiser with the push of a button! Below she's a Two-Stateroom Two-Head layout with a full Galley and starboard Dinette, featuring privacy doors and beautiful woodwork throughout.

Designed specifically for the **Volvo IPS** pods, this Regal features the optional upgraded twin **IPS 500** system rated at 370 HP with less than 800 hours.

Well cared for and maintained by a knowledgeable owner this **Regal 42 SC** is ready for Adventure and Fun!

## Basic Information

---

**Category:** Motor Yacht

**Model Year:** 2011

**Year Built:** 2011

**Country:** United States

## Dimensions

---

**LOA:** 42' 4" (12.9mm)

**Beam:** 13

**Max Draft:** 3' 5" (1.04mm)

## Speed, Capacities and Weight

---

**Cruise Speed:** 23.46 Knots Kts. (27 MPH)    **Water Capacity:** 70 Gallons

**Holding Tank:** 40 Gal Gallons

**Fuel Capacity:** 280 Gal Gallons

## Accommodations

---

**Total Cabins:** 2

**Total Heads:** 2

---

## Hull and Deck Information

---

**Hull Material:** Fiberglass

---

## Engine Information

---

**Engines:** 2

**Manufacturer:** Volvo Penta

**Engine Type:** Inboard

**Fuel Type:** Diesel

# PHOTOS

2



3



4



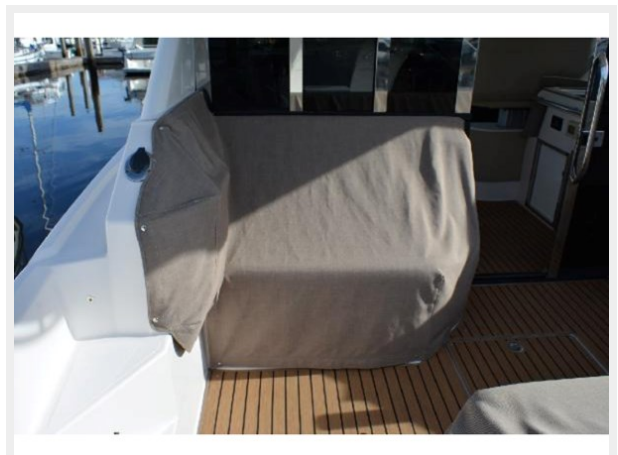
5



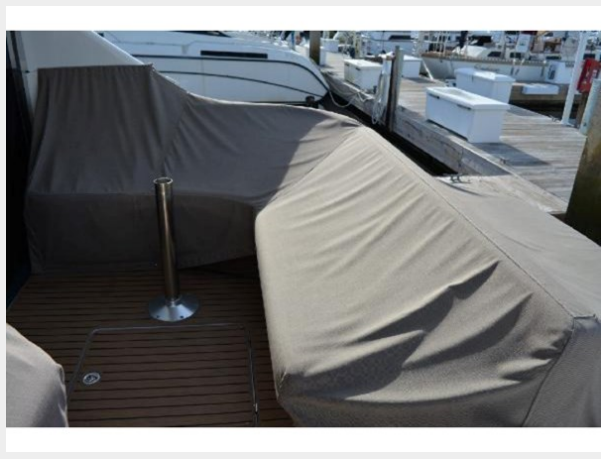
6



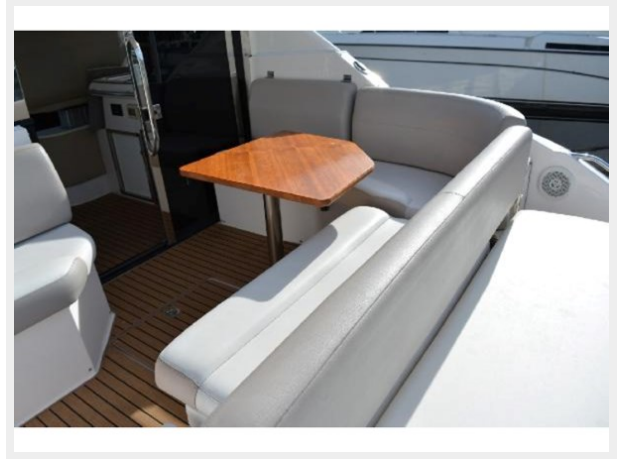
7



8



9



10



11



12



13





14



15



16



17



18



19



20



21



22



23



24



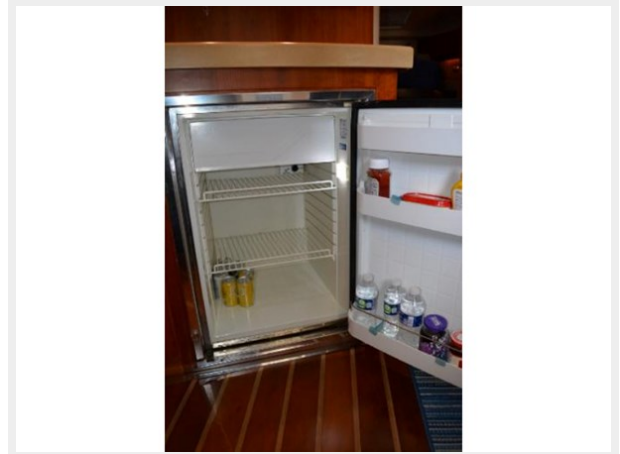
25



26



27



28



29



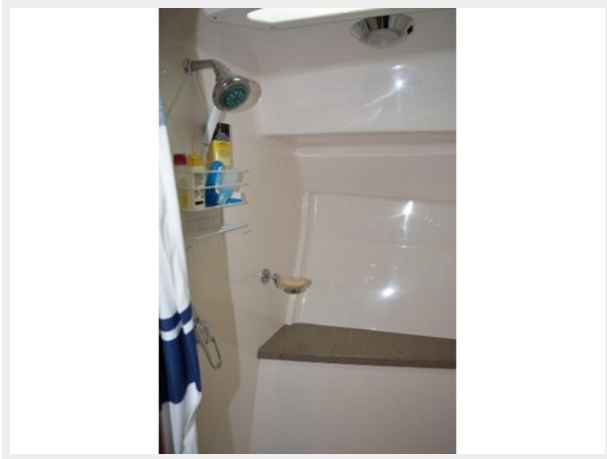
30



31



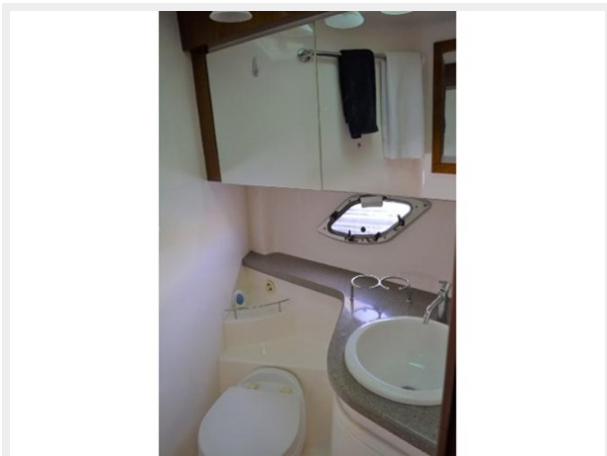
32



33



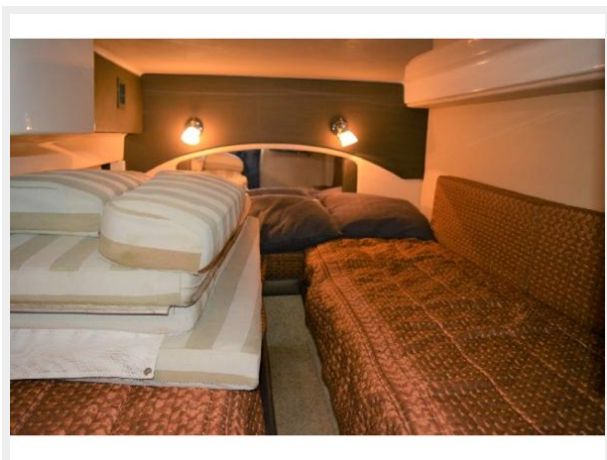
34



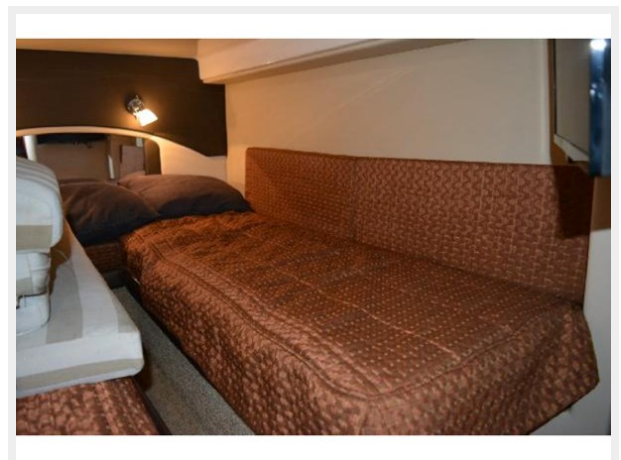
35



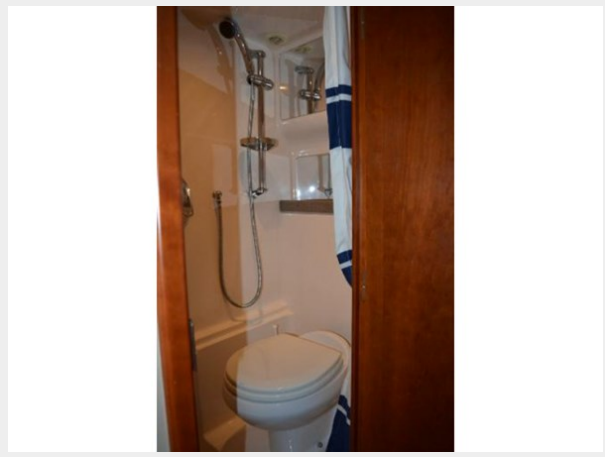
36



37



38



39



40



41



42



43



44



# CONTACTS

---

Andrey Shestakov, leading yacht broker of the sales department of Shestakov Yacht Sales Inc. Shestakov Yacht Sales Inc., the official representative of the Miami/Fort Lauderdale FL headquarters.

## Contact details

---

Email: [andrey@shestakovyachtsales.com](mailto:andrey@shestakovyachtsales.com)

Web: [shestakovyachtsales.com/en/](http://shestakovyachtsales.com/en/)

## Telephones

---

USA: +1(954)274-4435

## Office hours

---

Monday – Saturday: **9:00 - 21:00** EDT

Sunday: **closed**

## Address

---



Harbour Towne Marina, 850 NE 3rd St,  
STE 213, Dania, FL 33004