

## GROUP HUG — BLUEWATER YACHTING



**Builder:** BLUEWATER YACHTING

**Year Built:** 1986

**Model:** Motor Yacht

**Price:** PRICE ON APPLICATION

**Location:** United States

**LOA:** 51' (15.54mm)

**Beam:** 14

**Max Draft:** 2' 8" (0.81mm)

Our experienced yacht broker, Andrey Shestakov, will help you choose and buy a yacht that best suits your needs **Group Hug — BLUEWATER YACHTING** from our catalogue. Presently, at Shestakov Yacht Sales Inc., we have a wide variety of yachts available on our sale's list. We also work in close contact with all the big yacht manufacturers from all over the world.

If you would like to buy a yacht **Group Hug — BLUEWATER YACHTING** or would like help answering any questions concerning purchasing, selling or chartering a yacht, please call **+1(954)274-4435**

---

# TABLE OF CONTENTS

---

|                              |   |
|------------------------------|---|
| TABLE OF CONTENTS            | 2 |
| SPECIFICATIONS               | 5 |
| Overview                     | 5 |
| Basic Information            | 5 |
| Dimensions                   | 5 |
| Speed, Capacities and Weight | 5 |
| Accommodations               | 5 |
| Hull and Deck Information    | 6 |
| Engine Information           | 6 |
| PHOTOS                       | 7 |
| 0_2795772_                   | 7 |
| 1_2795772_                   | 7 |
| 2_2795772_                   | 7 |
| 3_2795772_                   | 7 |
| 4_2795772_                   | 7 |
| 5_2795772_                   | 7 |
| 6_2795772_                   | 8 |
| 7_2795772_                   | 8 |
| 8_2795772_                   | 8 |
| 9_2795772_                   | 8 |
| 10_2795772_                  | 8 |
| 11_2795772_                  | 8 |
| 12_2795772_                  | 9 |
| 13_2795772_                  | 9 |
| 14_2795772_                  | 9 |
| 15_2795772_                  | 9 |
| 16_2795772_                  | 9 |
| 17_2795772_                  | 9 |

---

|             |    |
|-------------|----|
| 18_2795772_ | 10 |
| 19_2795772_ | 10 |
| 20_2795772_ | 10 |
| 21_2795772_ | 10 |
| 22_2795772_ | 10 |
| 23_2795772_ | 10 |
| 24_2795772_ | 11 |
| 25_2795772_ | 11 |
| 26_2795772_ | 11 |
| 27_2795772_ | 11 |
| 28_2795772_ | 11 |
| 29_2795772_ | 11 |
| 30_2795772_ | 12 |
| 31_2795772_ | 12 |
| 32_2795772_ | 12 |
| 33_2795772_ | 12 |
| 34_2795772_ | 12 |
| 35_2795772_ | 12 |
| 36_2795772_ | 13 |
| 37_2795772_ | 13 |
| 38_2795772_ | 13 |
| 39_2795772_ | 13 |
| 40_2795772_ | 13 |
| 41_2795772_ | 13 |
| 42_2795772_ | 14 |
| 43_2795772_ | 14 |
| 44_2795772_ | 14 |
| 45_2795772_ | 14 |
| 46_2795772_ | 14 |

---

---

|                 |    |
|-----------------|----|
| 47_2795772_     | 14 |
| 48_2795772_     | 15 |
| 49_2795772_     | 15 |
| 50_2795772_     | 15 |
| 51_2795772_     | 15 |
| 52_2795772_     | 15 |
| 54_2795772_     | 15 |
| 55_2795772_     | 16 |
| 56_2795772_     | 16 |
| 57_2795772_     | 16 |
| 58_2795772_     | 16 |
| 59_2795772_     | 16 |
| 60_2795772_     | 16 |
| 61_2795772_     | 17 |
| 62_2795772_     | 17 |
| CONTACTS        | 18 |
| Contact details | 18 |
| Telephones      | 18 |
| Office hours    | 18 |
| Address         | 18 |

---

# SPECIFICATIONS

---

## Overview

---

*Group Hug* is a super spacious 1986 Bluewater 51' Coastal Cruiser with many amenities! Her huge upper deck is great for entertaining and socializing with a big group of guests and the place for soaking up the sun. This vessel can be piloted from either of the dual helm stations. Inside, her long and beamy salon features plenty of seating and entertainment space. The galley is fully furnished with a standard refrigerator, oven, stove, microwave, and double sink. The forward and master stateroom have dedicated heads with showers. She is powered by Crusader model 350 engines with a Westerbeke 12.5 kW generator. The spacious layout of Group Hug would make a great live aboard or long term cruiser. Please call or email to schedule a showing.

## Basic Information

---

**Category:** Motor Yacht

**Model Year:** 1986

**Year Built:** 1986

**Country:** United States

## Dimensions

---

**LOA:** 51' (15.54mm)

**Beam:** 14

**Max Draft:** 2' 8" (0.81mm)

## Speed, Capacities and Weight

---

**Holding Tank:** 56 Gal Gallons

**Fuel Capacity:** 320 Gal Gallons

## Accommodations

---

**Total Cabins:** 2

**Total Heads:** 2

---

## Hull and Deck Information

---

**Hull Material:** Fiberglass

---

## Engine Information

---

**Engines:** 2

**Manufacturer:** Crusader

**Engine Type:** Inboard

**Fuel Type:** Gas/Petrol

# PHOTOS

0\_2795772\_



1\_2795772\_



2\_2795772\_



3\_2795772\_



4\_2795772\_



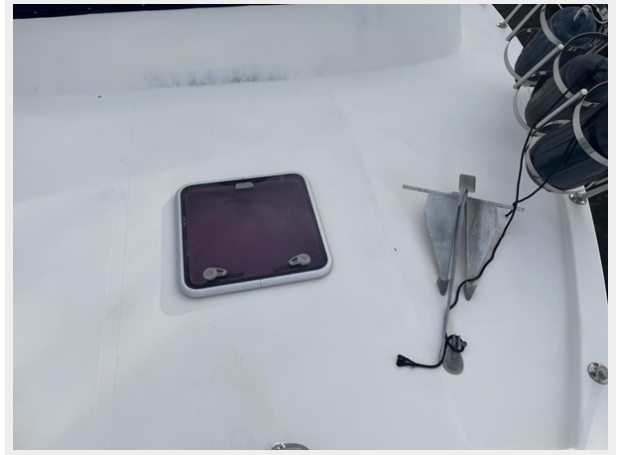
5\_2795772\_



6\_2795772\_



7\_2795772\_



8\_2795772\_



9\_2795772\_



10\_2795772\_



11\_2795772\_





12\_2795772\_



13\_2795772\_



14\_2795772\_



15\_2795772\_



16\_2795772\_



17\_2795772\_



18\_2795772\_



19\_2795772\_



20\_2795772\_



21\_2795772\_



22\_2795772\_



23\_2795772\_



24\_2795772\_



25\_2795772\_



26\_2795772\_



27\_2795772\_



28\_2795772\_



29\_2795772\_



**30\_2795772\_**



**31\_2795772\_**



**32\_2795772\_**



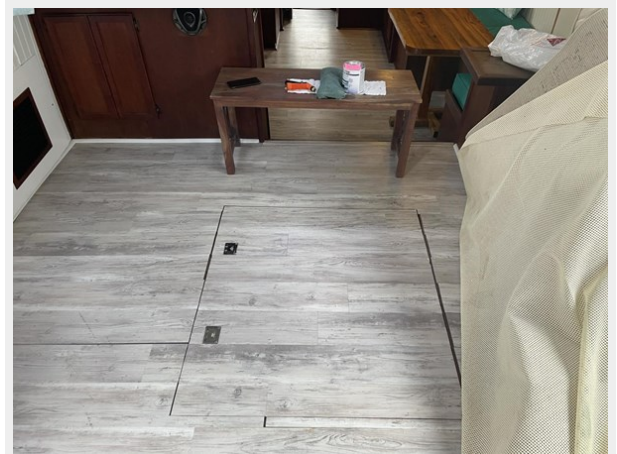
**33\_2795772\_**



**34\_2795772\_**



**35\_2795772\_**



36\_2795772\_



37\_2795772\_



38\_2795772\_



39\_2795772\_



40\_2795772\_



41\_2795772\_



42\_2795772\_



43\_2795772\_



44\_2795772\_



45\_2795772\_



46\_2795772\_



47\_2795772\_



48\_2795772\_



49\_2795772\_



50\_2795772\_



51\_2795772\_



52\_2795772\_



54\_2795772\_



55\_2795772\_



56\_2795772\_



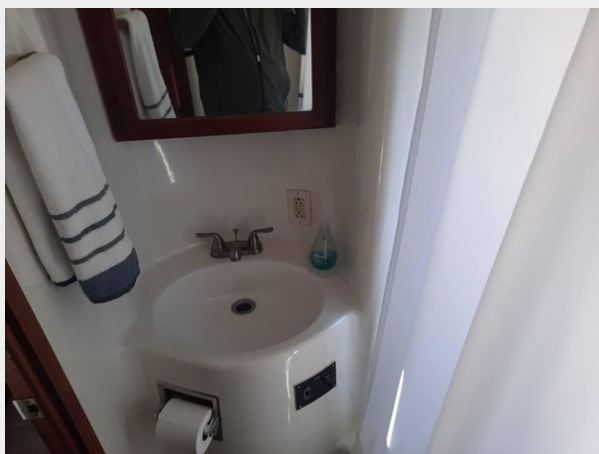
57\_2795772\_



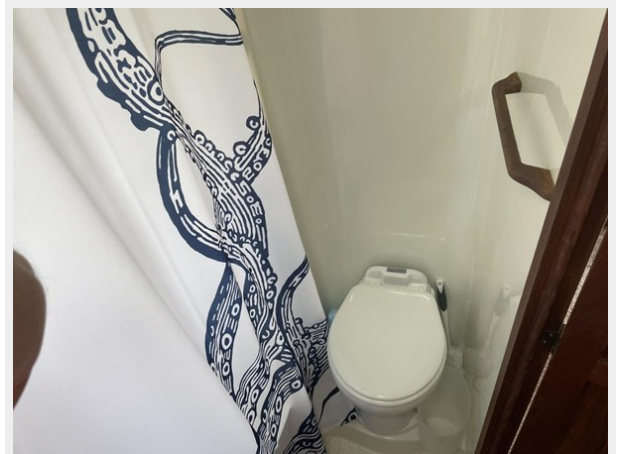
58\_2795772\_



59\_2795772\_

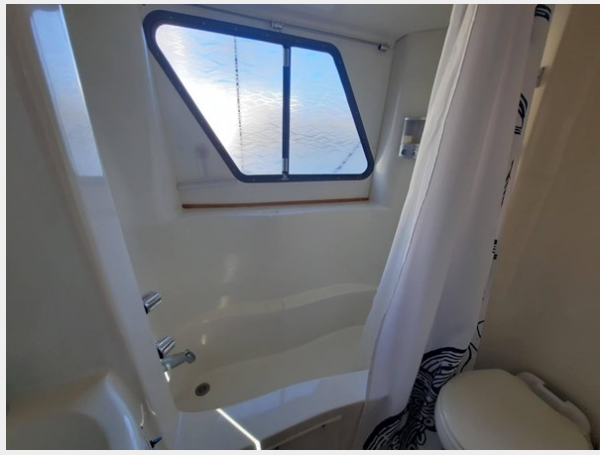


60\_2795772\_





61\_2795772\_



62\_2795772\_



# CONTACTS

---

Andrey Shestakov, leading yacht broker of the sales department of Shestakov Yacht Sales Inc. Shestakov Yacht Sales Inc., the official representative of the Miami/Fort Lauderdale FL headquarters.

## Contact details

---

Email: [andrey@shestakovyachtsales.com](mailto:andrey@shestakovyachtsales.com)

Web: [shestakovyachtsales.com/en/](http://shestakovyachtsales.com/en/)

## Telephones

---

USA: +1(954)274-4435

## Office hours

---

Monday – Saturday: **9:00 - 21:00** EDT

Sunday: **closed**

## Address

---



Harbour Towne Marina, 850 NE 3rd St,  
STE 213, Dania, FL 33004