

YACHTOOMA — PRESTIGE



Builder: PRESTIGE

Year Built: 2017

Model: Motor Yacht

Price: \$1,600,000 USD

Location: United States

LOA: 68' (20.73mm)

Beam: 17.41

Max Draft: 5' 2" (1.57mm)

Cruise Speed: 25 Knots Kts. (29 MPH)

Max Speed: 30 Knots Kts. (35 MPH)

Our experienced yacht broker, Andrey Shestakov, will help you choose and buy a yacht that best suits your needs **Yachtooma — PRESTIGE** from our catalogue. Presently, at Shestakov Yacht Sales Inc., we have a wide variety of yachts available on our sale's list. We also work in close contact with all the big yacht manufacturers from all over the world.

If you would like to buy a yacht **Yachtooma — PRESTIGE** or would like help answering any questions concerning purchasing, selling or chartering a yacht, please call **+1(954)274-4435**

TABLE OF CONTENTS

| | |
|------------------------------|----|
| TABLE OF CONTENTS | 2 |
| SPECIFICATIONS | 3 |
| Overview | 3 |
| Basic Information | 4 |
| Dimensions | 4 |
| Speed, Capacities and Weight | 4 |
| Accommodations | 4 |
| Hull and Deck Information | 4 |
| Engine Information | 4 |
| PHOTOS | 5 |
| CONTACTS | 14 |
| Contact details | 14 |
| Telephones | 14 |
| Office hours | 14 |
| Address | 14 |

SPECIFICATIONS

Overview

Best deal on the market make an offer

This 2017 Prestige 68 Flybridge is by far one of the best motor yachts on the market. Her full-time yacht management keeps her interior and exterior looking like a 5-star luxury hotel. The Prestige 68 imitates a seaside restaurant with adjacent floor-to-ceiling windows. This yacht is a must-see, schedule your private showing today.

Key Features

4 Stateroom

Aft docking station

Yacht controller

Seakeeper Gyro

New Bottom paint April 2023

New Stereo June-2022

New Service Batteries May-2022

New Engine Batteries July-2022

New Fresh Water Pump April-2022

New Exterior Cushions and Upholstery May-2022

New Radar May-2022

Pod Service April 2023

Basic Information

Category: Motor Yacht

Model Year: 2017

Year Built: 2017

Country: United States

Dimensions

LOA: 68' (20.73mm)

Beam: 17.41

Max Draft: 5' 2" (1.57mm)

Speed, Capacities and Weight

Cruise Speed: 25 Knots Kts. (29 MPH)

Cruise Speed Range: 350

Max Speed: 30 Knots Kts. (35 MPH)

Water Capacity: 243 Gallons

Holding Tank: 105 Gal Gallons

Fuel Capacity: 911 Gal Gallons

Accommodations

Total Cabins: 4

Total Heads: 4

Hull and Deck Information

Hull Material: Fiberglass

Engine Information

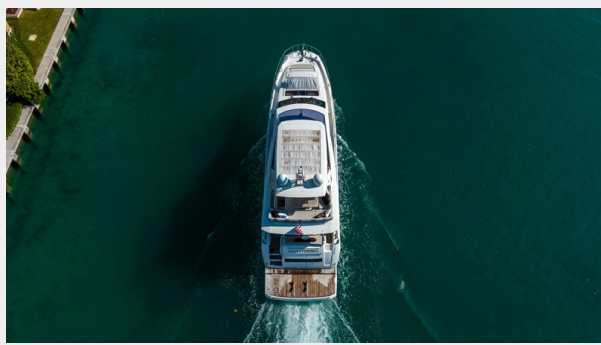
Engines: 2

Manufacturer: Volvo

Engine Type: Inboard

Fuel Type: Diesel

PHOTOS





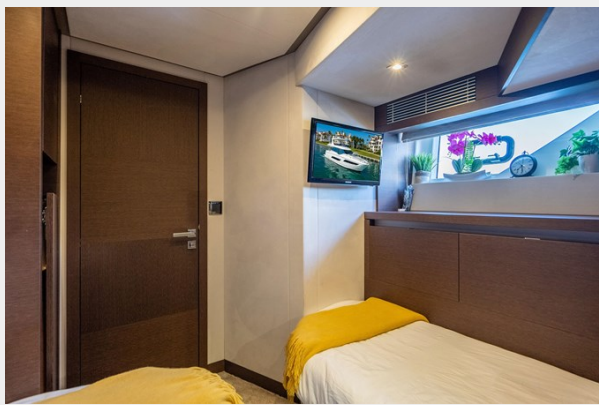


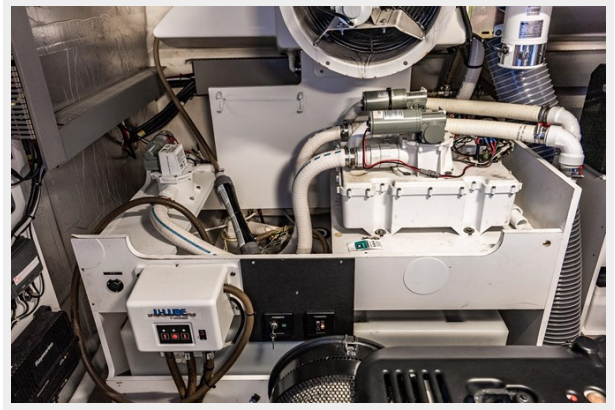
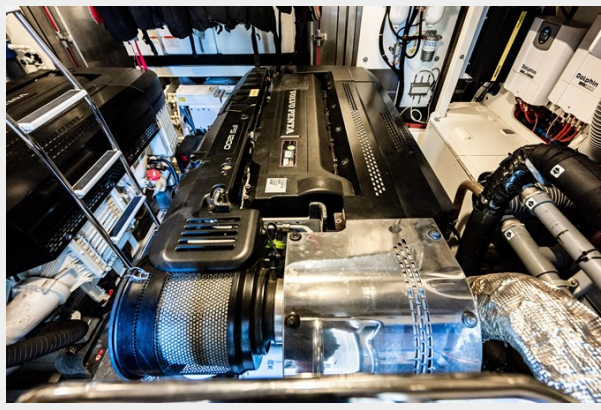












CONTACTS

Andrey Shestakov, leading yacht broker of the sales department of Shestakov Yacht Sales Inc. Shestakov Yacht Sales Inc., the official representative of the Miami/Fort Lauderdale FL headquarters.

Contact details

Email: andrey@shestakovyachtsales.com

Web: shestakovyachtsales.com/en/

Telephones

USA: +1(954)274-4435

Office hours

Monday – Saturday: **9:00 - 21:00** EDT

Sunday: **closed**

Address



Harbour Towne Marina, 850 NE 3rd St,
STE 213, Dania, FL 33004