

FASCINATION 1 — SEA RAY



Builder: SEA RAY

Year Built: 1996

Model: Motor Yacht

Price: PRICE ON APPLICATION

Location: United States

LOA: 45' 5" (13.84mm)

Beam: 14.25

Min Draft: 3' 1" (0.94mm)

Max Draft: 3' (0.91mm)

Our experienced yacht broker, Andrey Shestakov, will help you choose and buy a yacht that best suits your needs **FASCINATION 1 — SEA RAY** from our catalogue. Presently, at Shestakov Yacht Sales Inc., we have a wide variety of yachts available on our sale's list. We also work in close contact with all the big yacht manufacturers from all over the world.

If you would like to buy a yacht **FASCINATION 1 — SEA RAY** or would like help answering any questions concerning purchasing, selling or chartering a yacht, please call **+1(954)274-4435**

TABLE OF CONTENTS

TABLE OF CONTENTS	2
SPECIFICATIONS	5
Overview	5
Basic Information	5
Dimensions	5
Speed, Capacities and Weight	5
Accommodations	5
Hull and Deck Information	6
Engine Information	6
PHOTOS	7
3	7
2	7
4	7
4b	7
6	7
8	7
9	8
10	8
11	8
13 (1)	8
14	8
15	8
17	9
16	9
18	9
19	9
20	9
21	9

21a	10
22	10
23	10
24	10
25	10
26	10
27	11
28	11
29	11
30	11
31	11
31a	11
32	12
33	12
34	12
35	12
36	12
37	12
38	13
38a	13
39	13
40	13
41	13
43	13
44	14
45	14
46	14
47	14
49	14

48	14
50	15
51	15
52	15
53	15
54	15
55	15
56	16
57	16
58	16
59	16
60	16
CONTACTS	17
Contact details	17
Telephones	17
Office hours	17
Address	17

SPECIFICATIONS

Overview

1997 420 Sea Ray Aft cabin

Spacious Aft cabin layout offers a massive master, two heads, spacious salon and galley living area. Recent upgrades Hibridtouch GPS and autopilot, gages, Fusion stereo and GL speakers. New Turbos, new Batteries, engine service, AC descaled and serviced generator July 2022. 1000 hours service done at 1100 hours. A yacht fit for overnight cruising or liveaboard.

Basic Information

Category: Motor Yacht

Sub Category: Aft Cabin

Model Year: 1997

Year Built: 1996

Country: United States

Dimensions

LOA: 45' 5" (13.84mm)

Beam: 14.25

Min Draft: 3' 1" (0.94mm)

Max Draft: 3' (0.91mm)

Speed, Capacities and Weight

Water Capacity: 120 Gallons

Fuel Capacity: 350 Gal Gallons

Accommodations

Total Cabins: 3

Total Berths: 3

Total Heads: 2

Hull and Deck Information

Hull Material: Fiberglass

Engine Information

Engines: 2

Manufacturer: Caterpillar

Engine Type: Inboard

Fuel Type: Diesel

PHOTOS

2



3



4



4b



6



8



9



10



11



13 (1)



14



15



16



17



18



19



20



21



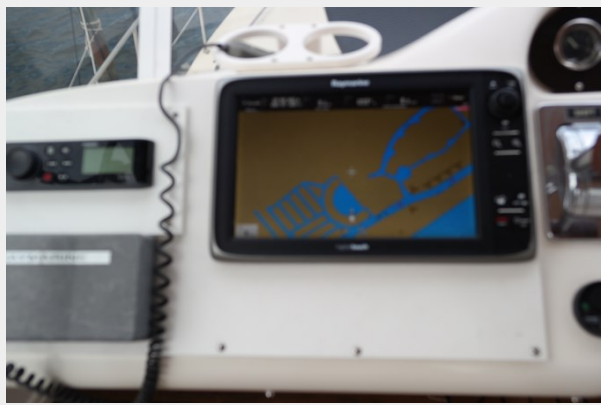
21a



22



23



24



25



26



27



28



29



30



31



31a



32



33



34



35



36



37



38



38a



39



40



41



43



44



45



46



47



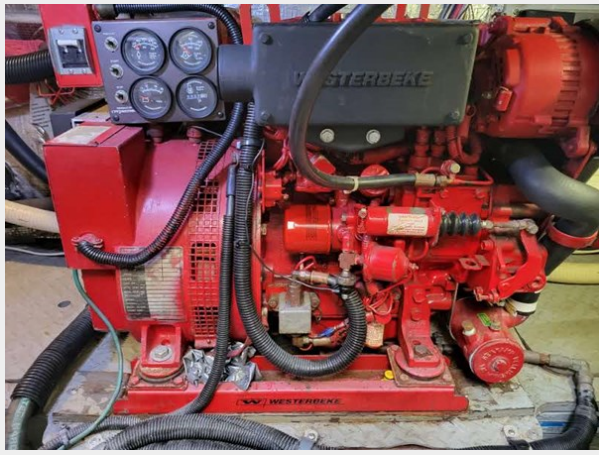
48



49



50



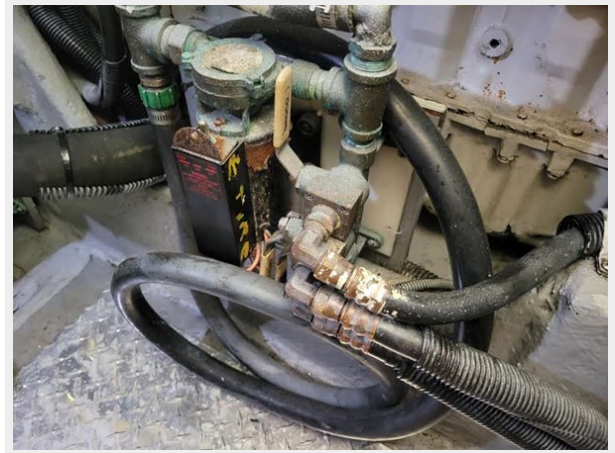
51



52



53



54



55



56



57



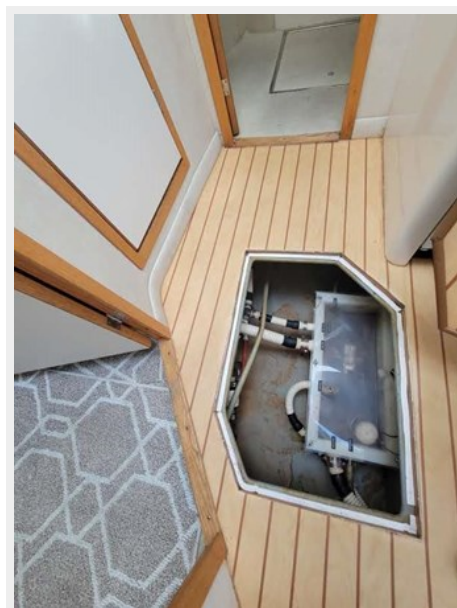
58



59



60



CONTACTS

Andrey Shestakov, leading yacht broker of the sales department of Shestakov Yacht Sales Inc. Shestakov Yacht Sales Inc., the official representative of the Miami/Fort Lauderdale FL headquarters.

Contact details

Email: andrey@shestakovyachtsales.com

Web: shestakovyachtsales.com/en/

Telephones

USA: +1(954)274-4435

Office hours

Monday – Saturday: **9:00 - 21:00** EDT

Sunday: **closed**

Address



Harbour Towne Marina, 850 NE 3rd St,
STE 213, Dania, FL 33004