

NEW BEGINNINGS — SEA RAY



Builder: SEA RAY

Year Built: 1996

Model: Motor Yacht

Price: PRICE ON APPLICATION

Location: United States

LOA: 42' (12.8mm)

Beam: 14.25

Min Draft: 3' 1" (0.94mm)

Max Draft: 3' 10" (1.17mm)

Cruise Speed: 25 Knots Kts. (29 MPH)

Max Speed: 28 Knots Kts. (32 MPH)

Our experienced yacht broker, Andrey Shestakov, will help you choose and buy a yacht that best suits your needs **New Beginnings — SEA RAY** from our catalogue. Presently, at Shestakov Yacht Sales Inc., we have a wide variety of yachts available on our sale's list. We also work in close contact with all the big yacht manufacturers from all over the world.

If you would like to buy a yacht **New Beginnings — SEA RAY** or would like help answering any questions concerning purchasing, selling or chartering a yacht, please call **+1(954)274-4435**

TABLE OF CONTENTS

TABLE OF CONTENTS	2
SPECIFICATIONS	5
Overview	5
Basic Information	5
Dimensions	5
Speed, Capacities and Weight	5
Accommodations	5
Hull and Deck Information	5
Engine Information	5
PHOTOS	6
0_2795461_1996_sea_ray_420ac	6
1_2795461_1_1996_sea_ray_420ac_new_beginnings_starboard_view	6
3_2795461_3_1996_sea_ray_420ac_new_beginnings_aft_view	6
2_2795461_2_1996_sea_ray_420ac_new_beginnings_port_profile	6
5_2795461_5_1996_sea_ray_420ac_new_beginnings_dinghy_1	6
4_2795461_4_1996_sea_ray_420ac_new_beginnings_davit_system	6
6_2795461_6_1996_sea_ray_420ac_new_beginnings_dinghy_2	6
7_2795461_7_1996_sea_ray_420ac_new_beginnings_dinghy_3	6
8_2795461_8_1996_sea_ray_420ac_new_beginnings_swim_platform_and_aft_access	7
9_2795461_9_1996_sea_ray_420ac_new_beginnings_aft_deck_wet_bar	7
10_2795461_10_1996_sea_ray_420ac_new_beginnings_aft_deck_3	7
11_2795461_11_1996_sea_ray_420ac_new_beginnings_aft_deck_2	7
12_2795461_12_1996_sea_ray_420ac_new_beginnings_aft_deck_1	7
13_2795461_13_1996_sea_ray_420ac_new_beginnings_aft_deck_4	7
14_2795461_14_1996_sea_ray_420ac_new_beginnings_helm_1	7
15_2795461_15_1996_sea_ray_420ac_new_beginnings_electronics_1	7
16_2795461_16_1996_sea_ray_420ac_new_beginnings_electronics_2	8
17_2795461_17_1996_sea_ray_420ac_new_beginnings_foredeck	8

18_2795461_18_1996_sea_ray_420ac_new_beginnings_bow_cushion	8
19_2795461_19_1996_sea_ray_420ac_new_beginnings_anchor	8
20_2795461_20_1996_sea_ray_420ac_new_beginnings_salon_1	8
21_2795461_21_1996_sea_ray_420ac_new_beginnings_salon_2	8
22_2795461_22_1996_sea_ray_420ac_new_beginnings_salon_3	8
23_2795461_23_1996_sea_ray_420ac_new_beginnings_salon_4	8
24_2795461_24_1996_sea_ray_420ac_new_beginnings_salon_5	9
25_2795461_25_1996_sea_ray_420ac_new_beginnings_salon_6	9
26_2795461_26_1996_sea_ray_420ac_new_beginnings_salon_7	9
27_2795461_27_1996_sea_ray_420ac_new_beginnings_salon_closet	9
28_2795461_28_1996_sea_ray_420ac_new_beginnings_galley_1	9
29_2795461_29_1996_sea_ray_420ac_new_beginnings_galley_2	9
30_2795461_30_1996_sea_ray_420ac_new_beginnings_utility_room_1	9
31_2795461_31_1996_sea_ray_420ac_new_beginnings_fwd_cabin_1	9
32_2795461_32_1996_sea_ray_420ac_new_beginnings_fwd_cabin_2	10
33_2795461_33_1996_sea_ray_420ac_new_beginnings_fwd_cabin_3	10
34_2795461_34_1996_sea_ray_420ac_new_beginnings_fwd_head_1	10
35_2795461_35_1996_sea_ray_420ac_new_beginnings_aft_cabin_1	10
36_2795461_36_1996_sea_ray_420ac_new_beginnings_aft_cabin_2	10
37_2795461_37_1996_sea_ray_420ac_new_beginnings_aft_cabin_3	10
38_2795461_38_1996_sea_ray_420ac_new_beginnings_aft_cabin_4	10
39_2795461_39_1996_sea_ray_420ac_new_beginnings_aft_head_1	10
40_2795461_40_1996_sea_ray_420ac_new_beginnings_aft_head_2	11
41_2795461_41_1996_sea_ray_420ac_new_beginnings_engine_room_1	11
42_2795461_42_1996_sea_ray_420ac_new_beginnings_engine_room_3	11
43_2795461_43_1996_sea_ray_420ac_new_beginnings_engine_room_4	11
44_2795461_44_1996_sea_ray_420ac_new_beginnings_engine_room_5	11
45_2795461_45_1996_sea_ray_420ac_new_beginnings_engine_room_6	11
46_2795461_46_1996_sea_ray_420ac_new_beginnings_engine_room_7	11

47_2795461_47_1996_sea_ray_420ac_new_beginnings_generator_1	11
48_2795461_48_1996_sea_ray_420ac_new_beginnings_generator_2	12
49_2795461_49_1996_sea_ray_420ac_new_beginnings_generator_3	12
50_2795461_50_1996_sea_ray_420ac_new_beginnings_panel_1	12
51_2795461_51_1996_sea_ray_420ac_new_beginnings_panel_2	12
CONTACTS	13
Contact details	13
Telephones	13
Office hours	13
Address	13

SPECIFICATIONS

Overview

New Beginnings is a 1996 Sea Ray 420 aft cabin model with the utility room layout. She has been looping over the last year and has served her owners well. She is ready for your personal touches and to keep on cruising.

Basic Information

Category: Motor Yacht

Model Year: 1996

Year Built: 1996

Country: United States

Dimensions

LOA: 42' (12.8mm)

Beam: 14.25

Min Draft: 3' 1" (0.94mm)

Max Draft: 3' 10" (1.17mm)

Speed, Capacities and Weight

Cruise Speed: 25 Knots Kts. (29 MPH)

Max Speed: 28 Knots Kts. (32 MPH)

Water Capacity: 120 Gallons

Holding Tank: 55 Gal Gallons

Fuel Capacity: 350 Gal Gallons

Accommodations

Total Cabins: 2

Sleeps: 4

Total Heads: 2

Hull and Deck Information

Hull Material: Fiberglass

Engine Information

Engines: 2

Manufacturer: CAT

Engine Type: Inboard

Fuel Type: Diesel

PHOTOS

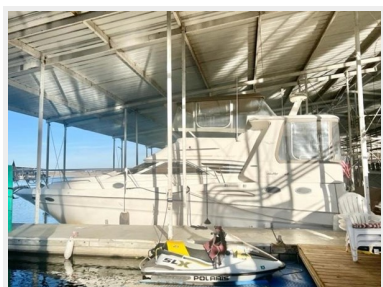
0_2795461_1996_sea_ray_420ac



1_2795461_1_1996_sea_ray_420ac_new_beginnings_starboard_view



2_2795461_2_1996_sea_ray_420ac_new_beginnings_port_profile



3_2795461_3_1996_sea_ray_420ac_new_beginnings_aft_view



4_2795461_4_1996_sea_ray_420ac_new_beginnings_davit_system



5_2795461_5_1996_sea_ray_420ac_new_beginnings_dinghy_1



6_2795461_6_1996_sea_ray_420ac_new_beginnings_dinghy_2



7_2795461_7_1996_sea_ray_420ac_new_beginnings_dinghy_3



8_2795461_8_1996_sea_ray_420ac_new_beginnings_swim_platform_and_aft_access 9_2795461_9_1996_sea_ray_420ac_new_beginnings_aft_de



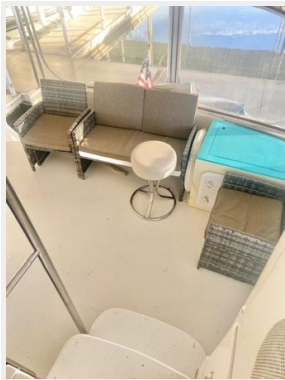
10_2795461_10_1996_sea_ray_420ac_new_beginnings_aft_deck_3



11_2795461_11_1996_sea_ray_420ac_new_beginnings_aft_deck_2



12_2795461_12_1996_sea_ray_420ac_new_beginnings_aft_deck_1



13_2795461_13_1996_sea_ray_420ac_new_beginnings_aft_deck_4



14_2795461_14_1996_sea_ray_420ac_new_beginnings_helm_1



15_2795461_15_1996_sea_ray_420ac_new_beginnings_electronics_1



16_2795461_16_1996_sea_ray_420ac_new_beginnings_electronics_2



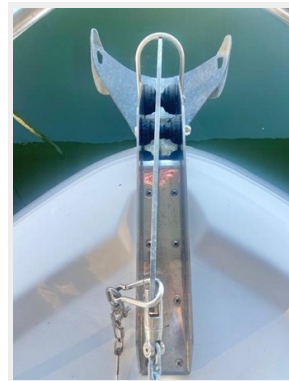
17_2795461_17_1996_sea_ray_420ac_new_beginnings_foredeck



18_2795461_18_1996_sea_ray_420ac_new_beginnings_bow_cushion



19_2795461_19_1996_sea_ray_420ac_new_beginnings_anchor



20_2795461_20_1996_sea_ray_420ac_new_beginnings_salon_1



21_2795461_21_1996_sea_ray_420ac_new_beginnings_salon_2



22_2795461_22_1996_sea_ray_420ac_new_beginnings_salon_3



23_2795461_23_1996_sea_ray_420ac_new_beginnings_salon_4



24_2795461_24_1996_sea_ray_420ac_new_beginnings_salon_5



25_2795461_25_1996_sea_ray_420ac_new_beginnings_salon_6



26_2795461_26_1996_sea_ray_420ac_new_beginnings_salon_7



27_2795461_27_1996_sea_ray_420ac_new_beginnings_salon_closet



28_2795461_28_1996_sea_ray_420ac_new_beginnings_galley_1



29_2795461_29_1996_sea_ray_420ac_new_beginnings_galley_2



30_2795461_30_1996_sea_ray_420ac_new_beginnings_utility_room_1



31_2795461_31_1996_sea_ray_420ac_new_beginnings_fwd_cabin_1



32_2795461_32_1996_sea_ray_420ac_new_beginnings_fwd_cabin_2



33_2795461_33_1996_sea_ray_420ac_new_beginnings_fwd_cabin_3



34_2795461_34_1996_sea_ray_420ac_new_beginnings_fwd_head_1



35_2795461_35_1996_sea_ray_420ac_new_beginnings_aft_cabin_1



36_2795461_36_1996_sea_ray_420ac_new_beginnings_aft_cabin_2



37_2795461_37_1996_sea_ray_420ac_new_beginnings_aft_cabin_3



38_2795461_38_1996_sea_ray_420ac_new_beginnings_aft_cabin_4



39_2795461_39_1996_sea_ray_420ac_new_beginnings_aft_head_1



40_2795461_40_1996_sea_ray_420ac_new_beginnings_aft_head_2



41_2795461_41_1996_sea_ray_420ac_new_beginnings_engine_room_1



42_2795461_42_1996_sea_ray_420ac_new_beginnings_engine_room_3



43_2795461_43_1996_sea_ray_420ac_new_beginnings_engine_room_4



44_2795461_44_1996_sea_ray_420ac_new_beginnings_engine_room_5 45_2795461_45_1996_sea_ray_420ac_new_beginnings_engine_room_6



46_2795461_46_1996_sea_ray_420ac_new_beginnings_engine_room_7 47_2795461_47_1996_sea_ray_420ac_new_beginnings_generator_1



48_2795461_48_1996_sea_ray_420ac_new_beginnings_generator_2



49_2795461_49_1996_sea_ray_420ac_new_beginnings_generator_3



50_2795461_50_1996_sea_ray_420ac_new_beginnings_panel_1



51_2795461_51_1996_sea_ray_420ac_new_beginnings_panel_2



CONTACTS

Andrey Shestakov, leading yacht broker of the sales department of Shestakov Yacht Sales Inc. Shestakov Yacht Sales Inc., the official representative of the Miami/Fort Lauderdale FL headquarters.

Contact details

Email:
andrey@shestakovyachtsales.com

Web: shestakovyachtsales.com/en/

Telephones

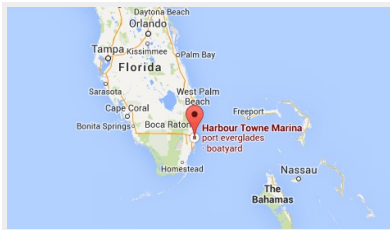
USA: +1(954)274-4435

Office hours

Monday – Saturday: 9:00 - 21:00 EDT

Sunday: closed

Address



Harbour Towne Marina, 850 NE 3rd St,
STE 213, Dania, FL 33004