

## FOUR PLAY — MAINSHIP



**Builder:** MAINSHIP

**Year Built:** 2001

**Model:** cruiser

**Price:** PRICE ON APPLICATION

**Location:** United States

**LOA:** 34' (10.36mm)

**Beam:** 12.25

**Max Draft:** 3' 3" (0.99mm)

Our experienced yacht broker, Andrey Shestakov, will help you choose and buy a yacht that best suits your needs **Four Play — MAINSHIP** from our catalogue. Presently, at Shestakov Yacht Sales Inc., we have a wide variety of yachts available on our sale's list. We also work in close contact with all the big yacht manufacturers from all over the world.

If you would like to buy a yacht **Four Play — MAINSHIP** or would like help answering any questions concerning purchasing, selling or chartering a yacht, please call **+1(954)274-4435**

# TABLE OF CONTENTS

TABLE OF CONTENTS	2
SPECIFICATIONS	4
Overview	4
Basic Information	4
Dimensions	4
Speed, Capacities and Weight	4
Accommodations	4
Hull and Deck Information	5
Engine Information	5
PHOTOS	6
8666846_20230124081509524_1_XLARGE	6
8666846_20230124081447376_1_XLARGE	6
8666846_20230124081522142_1_XLARGE	6
8666846_20230124081437765_1_XLARGE	6
8666846_20230124081545752_1_XLARGE	6
8666846_20230124081618490_1_XLARGE	6
8666846_20230124081607908_1_XLARGE	7
8666846_20230124081556031_1_XLARGE	7
8666846_20230124081734478_1_XLARGE	7
8666846_20230124081627091_1_XLARGE	7
8666846_20230124081637203_1_XLARGE	7
8666846_20230124081725865_1_XLARGE	7
8666846_20230124081647503_1_XLARGE	8
8666846_20230124081716534_1_XLARGE	8
8666846_20230124081657125_1_XLARGE	8
8666846_20230124081706319_1_XLARGE	8
8666846_20230124081532454_1_XLARGE	8
8666846_20230124081746716_1_XLARGE	8

---

8666846_20230124081810479_1_XLARGE	9
8666846_20230124081759093_1_XLARGE	9
CONTACTS	10
Contact details	10
Telephones	10
Office hours	10
Address	10

---

---

# SPECIFICATIONS

---

## Overview

---

2000 34' Mainship Pilot with Awlgrip Green Hull

Yanmar 350HP Diesel only 1815 Hours, 3.5kW NexGen Generator, 4212 Garmin GPS/Chart, Sideshift Bow and Stern Thrusters, Raymarine Auto Pilot ST5000+, VacuFlush Head, Flat Screen TV, Teak Inlay in Forward Cabin, Oil Change System, Windlass.

This is a Very Nice Vessel

**More Photos Soon....**

## Basic Information

---

**Category:** cruiser

**Sub Category:** Downeast

**Model Year:** 2001

**Year Built:** 2001

**Country:** United States

## Dimensions

---

**LOA:** 34' (10.36mm)

**Beam:** 12.25

**Max Draft:** 3' 3" (0.99mm)

## Speed, Capacities and Weight

---

**Water Capacity:** 70 Gallons

**Holding Tank:** 20 Gal Gallons

**Fuel Capacity:** 250 Gal Gallons

## Accommodations

---

**Total Cabins:** 1

---

## Hull and Deck Information

---

**Hull Material:** Fiberglass

## Engine Information

---

**Engines:** 1

**Manufacturer:** Yanmar

**Engine Type:** Inboard

**Fuel Type:** Diesel

# PHOTOS

8666846\_20230124081447376\_1\_XLARGE



8666846\_20230124081509524\_1\_XLARGE



8666846\_20230124081437765\_1\_XLARGE



8666846\_20230124081522142\_1\_XLARGE



8666846\_20230124081618490\_1\_XLARGE



8666846\_20230124081545752\_1\_XLARGE





8666846\_20230124081607908\_1\_XLARGE



8666846\_20230124081556031\_1\_XLARGE



8666846\_20230124081734478\_1\_XLARGE



8666846\_20230124081627091\_1\_XLARGE



8666846\_20230124081637203\_1\_XLARGE



8666846\_20230124081725865\_1\_XLARGE



8666846\_20230124081647503\_1\_XLARGE



8666846\_20230124081716534\_1\_XLARGE



8666846\_20230124081657125\_1\_XLARGE

8666846\_20230124081706319\_1\_XLARGE



8666846\_20230124081532454\_1\_XLARGE



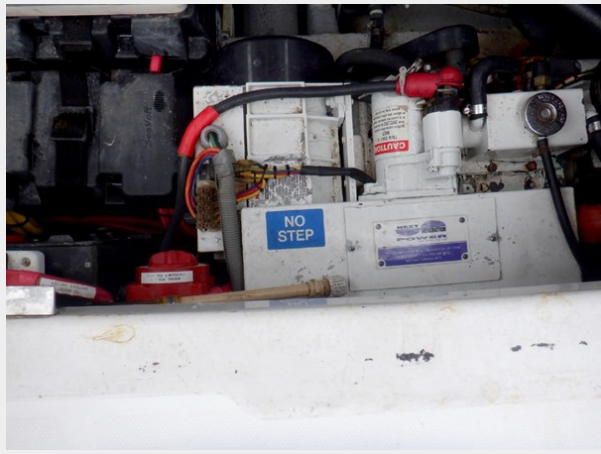
8666846\_20230124081746716\_1\_XLARGE





8666846\_20230124081810479\_1\_XLARGE

8666846\_20230124081759093\_1\_XLARGE



# CONTACTS

---

Andrey Shestakov, leading yacht broker of the sales department of Shestakov Yacht Sales Inc. Shestakov Yacht Sales Inc., the official representative of the Miami/Fort Lauderdale FL headquarters.

## Contact details

---

Email: [andrey@shestakovyachtsales.com](mailto:andrey@shestakovyachtsales.com)

Web: [shestakovyachtsales.com/en/](http://shestakovyachtsales.com/en/)

## Telephones

---

USA: +1(954)274-4435

## Office hours

---

Monday – Saturday: **9:00 - 21:00** EDT

Sunday: **closed**

## Address

---



Harbour Towne Marina, 850 NE 3rd St,  
STE 213, Dania, FL 33004