

## MISS PEGGY — COMMERCIAL MARINE



**Builder:** COMMERCIAL MARINE

**LOA:** 55' (16.76mm)

**Year Built:** 1980

**Beam:** 19

**Model:** Commercial Vessel

**Max Draft:** 6' (1.83mm)

**Price:** PRICE ON APPLICATION

**Location:** United States

Our experienced yacht broker, Andrey Shestakov, will help you choose and buy a yacht that best suits your needs **Miss Peggy — COMMERCIAL MARINE** from our catalogue. Presently, at Shestakov Yacht Sales Inc., we have a wide variety of yachts available on our sale's list. We also work in close contact with all the big yacht manufacturers from all over the world.

If you would like to buy a yacht **Miss Peggy — COMMERCIAL MARINE** or would like help answering any questions concerning purchasing, selling or chartering a yacht, please call **+1(954)274-4435**

---

# TABLE OF CONTENTS

---

TABLE OF CONTENTS	2
SPECIFICATIONS	5
Overview	5
Basic Information	5
Dimensions	5
Speed, Capacities and Weight	5
Accommodations	6
Hull and Deck Information	6
Engine Information	6
PHOTOS	7
0_2795998_	7
1_2795998_	7
2_2795998_	7
3_2795998_	7
4_2795998_	7
5_2795998_	7
6_2795998_	8
7_2795998_	8
8_2795998_	8
9_2795998_	8
10_2795998_	8
11_2795998_	8
12_2795998_	9
13_2795998_	9
14_2795998_	9
15_2795998_	9
16_2795998_	9
17_2795998_	9

---

18_2795998_	10
19_2795998_	10
20_2795998_	10
21_2795998_	10
22_2795998_	10
23_2795998_	10
24_2795998_	11
25_2795998_	11
26_2795998_	11
27_2795998_	11
28_2795998_	11
29_2795998_	11
30_2795998_	12
31_2795998_	12
32_2795998_	12
33_2795998_	12
34_2795998_	12
35_2795998_	12
36_2795998_	13
37_2795998_	13
38_2795998_	13
39_2795998_	13
40_2795998_	13
41_2795998_	13
42_2795998_	14
43_2795998_	14
44_2795998_	14
45_2795998_	14
46_2795998_	14

---

---

47_2795998_	14
48_2795998_	15
49_2795998_	15
50_2795998_	15
51_2795998_	15
CONTACTS	16
Contact details	16
Telephones	16
Office hours	16
Address	16

---

# SPECIFICATIONS

---

## Overview

---

F/V "MISS PEGGY" is an all-welded steel raked bow, hard chined, raked stern, single screw ocean fishing vessel. Vessel's shell noted constructed of approximately 1/4" thick steel plate from the chine to the railings and approximately 3/8" thick steel plate from the chine to the keel. Plate is strengthened by 1/4" x 3" steel transverse and longitudinal bar stock on average 24" centers. Hull is further strengthened by the placement of three (3) x transverse bulkheads, forming 4 x non-watertight compartments. Vessel's hull is segregated into the following compartments: Fore peak tank, storage compartment, machinery spaces with port and starboard fuel tanks, fish hold, void tanks, and lazarette. Main deck house noted fabricated of steel configured with a rounded front housing a slightly raised pilot house accessed from galley/berthing area, via a short stair, and from port/starboard wooden doors. Aft and down from pilot house is a galley/berthing area with small head aft on centerline. Storage compartment and engine room are accessed from main deck by a wooden lift-out hatch immediately aft of pilot house deck on centerline. The vessel underbody is hard-chined with moderate deadrise forward flattening to near 0 degrees aft. A modified cutaway keel houses a propeller aperture with a 4-blade bronze propeller. The keel is supported by bracing port and starboard. A spade-type steel plate rudder is supported by a rudder shoe and bearing in the keel.

## Basic Information

---

**Category:** Commercial Vessel

**Model Year:** 1980

**Year Built:** 1980

**Country:** United States

## Dimensions

---

**LOA:** 55' (16.76mm)

**Beam:** 19

**Max Draft:** 6' (1.83mm)

## Speed, Capacities and Weight

---

**Water Capacity:** 620 Gallons

**Fuel Capacity:** 4000 Gal Gallons

---

## Accommodations

---

**Total Cabins:** 1

**Sleeps:** 4

**Total Heads:** 1

---

## Hull and Deck Information

---

**Hull Material:** Steel

---

## Engine Information

---

**Engines:** 1

**Manufacturer:** Detroit Diesel

**Engine Type:** Inboard

**Fuel Type:** Diesel

# PHOTOS

0\_2795998\_



1\_2795998\_



2\_2795998\_



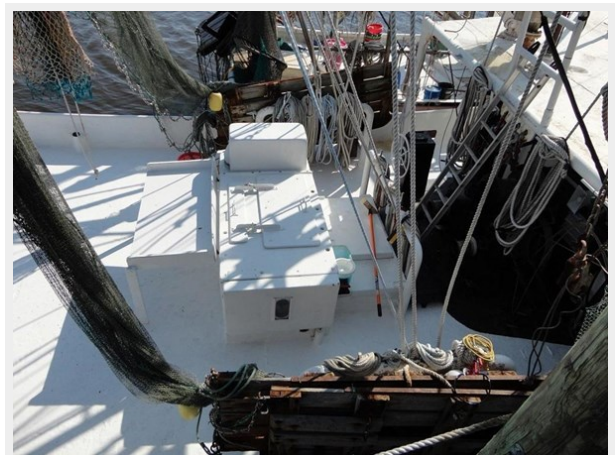
3\_2795998\_



4\_2795998\_



5\_2795998\_



6\_2795998\_



7\_2795998\_



8\_2795998\_



9\_2795998\_



10\_2795998\_



11\_2795998\_





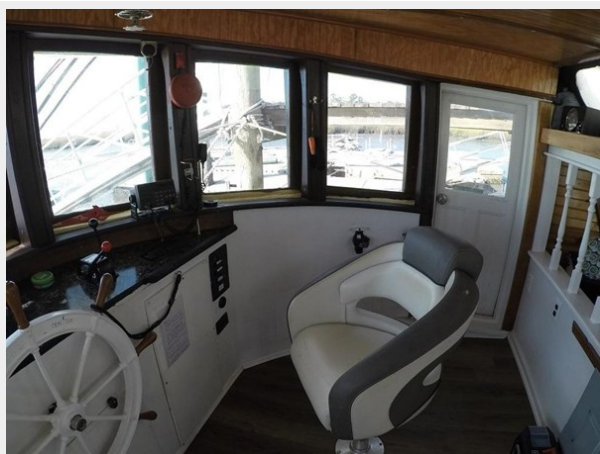
12\_2795998\_



13\_2795998\_



14\_2795998\_



15\_2795998\_



16\_2795998\_



17\_2795998\_



18\_2795998\_



19\_2795998\_



20\_2795998\_



21\_2795998\_



22\_2795998\_



23\_2795998\_



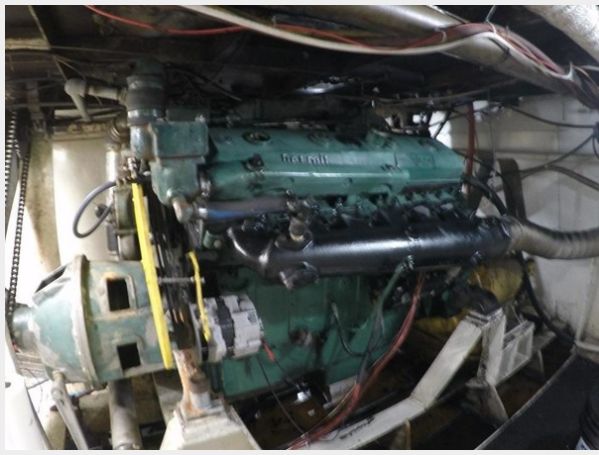
24\_2795998\_



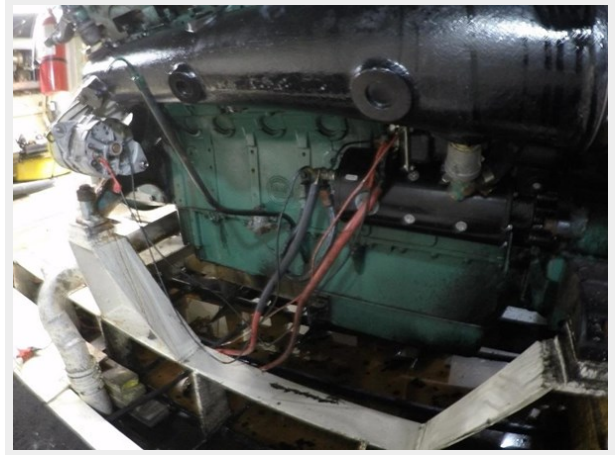
25\_2795998\_



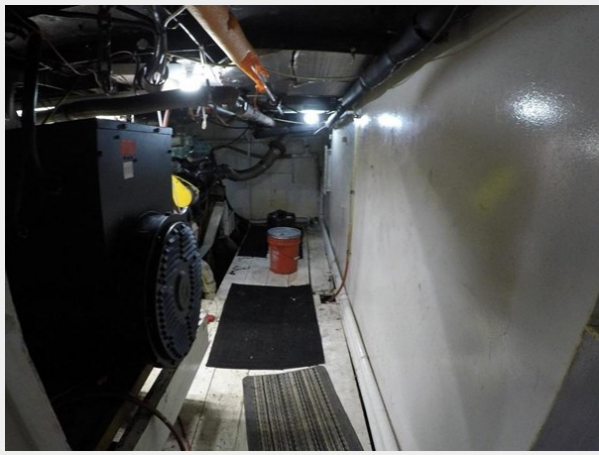
26\_2795998\_



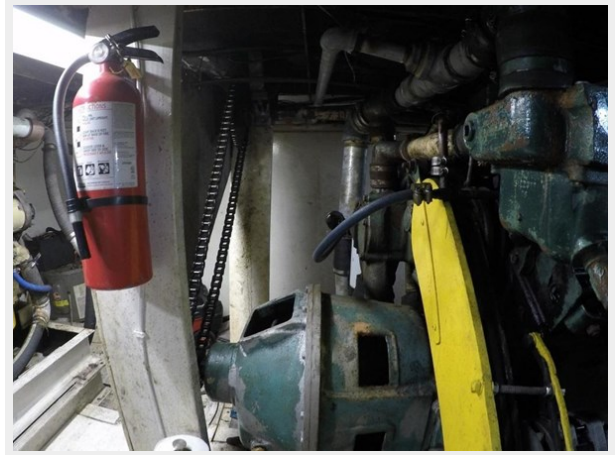
27\_2795998\_



28\_2795998\_



29\_2795998\_



**30\_2795998\_**



**31\_2795998\_**



**32\_2795998\_**



**33\_2795998\_**



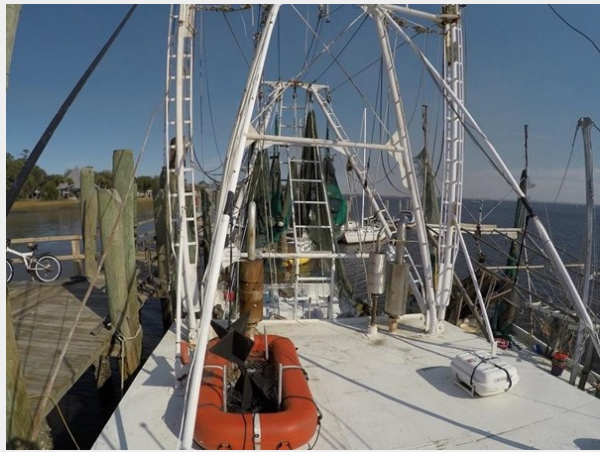
**34\_2795998\_**



**35\_2795998\_**



**36\_2795998\_**



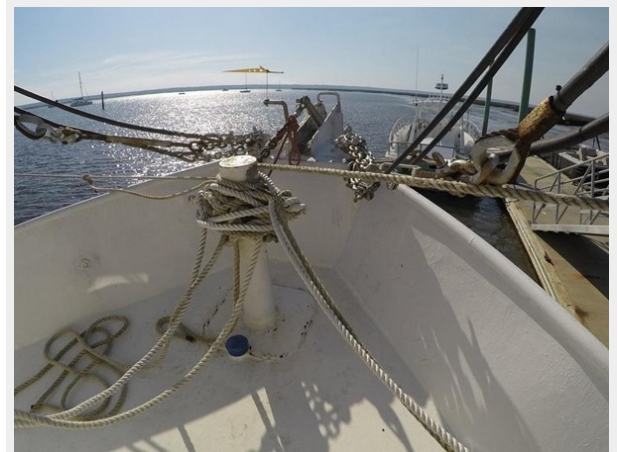
**37\_2795998\_**



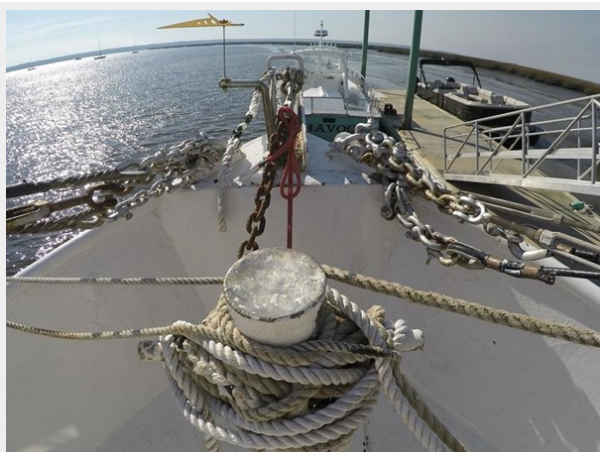
**38\_2795998\_**



**39\_2795998\_**



**40\_2795998\_**



**41\_2795998\_**



42\_2795998\_



43\_2795998\_



44\_2795998\_



45\_2795998\_



46\_2795998\_



47\_2795998\_



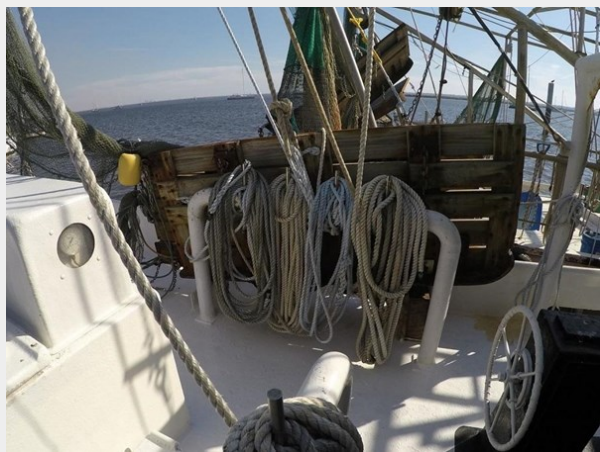
48\_2795998\_



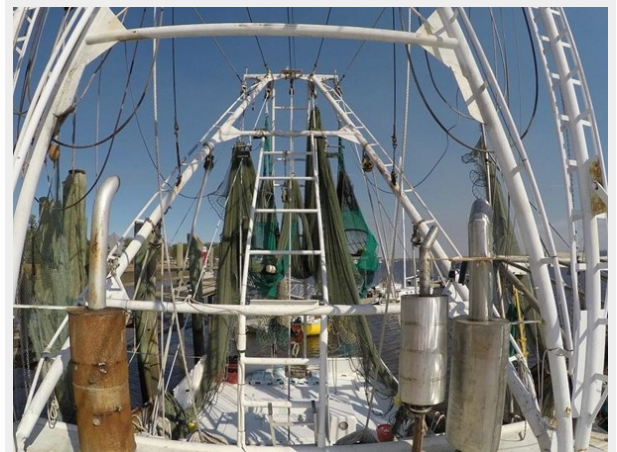
49\_2795998\_



50\_2795998\_



51\_2795998\_



# CONTACTS

---

Andrey Shestakov, leading yacht broker of the sales department of Shestakov Yacht Sales Inc. Shestakov Yacht Sales Inc., the official representative of the Miami/Fort Lauderdale FL headquarters.

## Contact details

---

Email: [andrey@shestakovyachtsales.com](mailto:andrey@shestakovyachtsales.com)

Web: [shestakovyachtsales.com/en/](http://shestakovyachtsales.com/en/)

## Telephones

---

USA: +1(954)274-4435

## Office hours

---

Monday – Saturday: **9:00 - 21:00** EDT

Sunday: **closed**

## Address

---



Harbour Towne Marina, 850 NE 3rd St,  
STE 213, Dania, FL 33004