

## JOY RIDE II — SEA RAY



**Builder:** SEA RAY

**LOA:** 51' (15.54m)

**Year Built:** 2012

**Model:** Motor Yacht

**Price:** PRICE ON APPLICATION

**Location:** United States

Our experienced yacht broker, Andrey Shestakov, will help you choose and buy a yacht that best suits your needs **JOY RIDE II — SEA RAY** from our catalogue. Presently, at Shestakov Yacht Sales Inc., we have a wide variety of yachts available on our sale's list. We also work in close contact with all the big yacht manufacturers from all over the world.

If you would like to buy a yacht **JOY RIDE II — SEA RAY** or would like help answering any questions concerning purchasing, selling or chartering a yacht, please call **+1(954)274-4435**

# TABLE OF CONTENTS

TABLE OF CONTENTS	2
SPECIFICATIONS	6
Overview	6
Basic Information	6
Dimensions	6
Accommodations	6
Hull and Deck Information	6
Engine Information	6
PHOTOS	7
51_sea_ray_joy_ride_II_profiles_8	7
51_sea_ray_joy_ride_II_profiles_10	7
51_sea_ray_joy_ride_II_profiles_13	7
51_sea_ray_joy_ride_II_profiles_3	7
51_sea_ray_joy_ride_II_profiles_6	7
51_sea_ray_joy_ride_II_profiles_4	7
51_sea_ray_joy_ride_II_bow_1	8
51_sea_ray_joy_ride_II_profiles_14	8
51_sea_ray_joy_ride_II_bow_2	8
51_sea_ray_joy_ride_II_bow_3	8
51_sea_ray_joy_ride_II_bow_5	8
51_sea_ray_joy_ride_II_bow_4	8
51_sea_ray_joy_ride_II_bow_6	9
51_sea_ray_joy_ride_II_bow_7	9
51_sea_ray_joy_ride_II_bow_8	9
51_sea_ray_joy_ride_II_cockpit_1	9
51_sea_ray_joy_ride_II_cockpit_2	9
51_sea_ray_joy_ride_II_cockpit_3	9
51_sea_ray_joy_ride_II_cockpit_4	10

---

51_sea_ray_joy_ride_II_cockpit_9	10
51_sea_ray_joy_ride_II_cockpit_10	10
51_sea_ray_joy_ride_II_swim_platform_1	10
51_sea_ray_joy_ride_II_swim_platform_2	10
51_sea_ray_joy_ride_II_swim_platform_3	10
51_sea_ray_joy_ride_II_sunroom_1	11
51_sea_ray_joy_ride_II_sunroom_2	11
51_sea_ray_joy_ride_II_sunroom_3	11
51_sea_ray_joy_ride_II_sunroom_4	11
51_sea_ray_joy_ride_II_sunroom_5	11
51_sea_ray_joy_ride_II_sunroom_6	11
51_sea_ray_joy_ride_II_sunroom_8	12
51_sea_ray_joy_ride_II_sunroom_7	12
51_sea_ray_joy_ride_II_sunroom_9	12
51_sea_ray_joy_ride_II_sunroom_10	12
51_sea_ray_joy_ride_II_sunroom_11	12
51_sea_ray_joy_ride_II_sunroom_12	12
51_sea_ray_joy_ride_II_helm_2	13
51_sea_ray_joy_ride_II_helm_1	13
51_sea_ray_joy_ride_II_helm_3	13
51_sea_ray_joy_ride_II_helm_4	13
51_sea_ray_joy_ride_II_helm_5	13
51_sea_ray_joy_ride_II_salon_1	13
51_sea_ray_joy_ride_II_salon_3	14
51_sea_ray_joy_ride_II_salon_2	14
51_sea_ray_joy_ride_II_salon_4	14
51_sea_ray_joy_ride_II_salon_5	14
51_sea_ray_joy_ride_II_salon_6	14
51_sea_ray_joy_ride_II_salon_7	14

---

---

51_sea_ray_joy_ride_II_galley_1	15
51_sea_ray_joy_ride_II_galley_2	15
51_sea_ray_joy_ride_II_galley_3	15
51_sea_ray_joy_ride_II_galley_4	15
51_sea_ray_joy_ride_II_galley_5	15
51_sea_ray_joy_ride_II_master_stateroom_1	15
51_sea_ray_joy_ride_II_master_stateroom_2	16
51_sea_ray_joy_ride_II_master_stateroom_3	16
51_sea_ray_joy_ride_II_master_stateroom_4	16
51_sea_ray_joy_ride_II_master_stateroom_5	16
51_sea_ray_joy_ride_II_master_stateroom_head_1	16
51_sea_ray_joy_ride_II_master_stateroom_head_2	16
51_sea_ray_joy_ride_II_master_stateroom_head_3	17
51_sea_ray_joy_ride_II_master_stateroom_head_4	17
51_sea_ray_joy_ride_II_master_stateroom_head_5	17
51_sea_ray_joy_ride_II_master_stateroom_head_6	17
51_sea_ray_joy_ride_II_forward_stateroom_1	17
51_sea_ray_joy_ride_II_forward_stateroom_2	17
51_sea_ray_joy_ride_II_forward_stateroom_3	18
51_sea_ray_joy_ride_II_forward_stateroom_4	18
51_sea_ray_joy_ride_II_forward_stateroom_head_1	18
51_sea_ray_joy_ride_II_forward_stateroom_5	18
51_sea_ray_joy_ride_II_forward_stateroom_head_2	18
51_sea_ray_joy_ride_II_forward_stateroom_head_3	18
51_sea_ray_joy_ride_II_engine_room_1	19
51_sea_ray_joy_ride_II_engine_room_2	19
51_sea_ray_joy_ride_II_engine_room_3	19
51_sea_ray_joy_ride_II_engine_room_4	19
51_sea_ray_joy_ride_II_engine_room_5	19

---

---

51_sea_ray_joy_ride_II_engine_room_7	19
51_sea_ray_joy_ride_II_engine_room_8	20
51_sea_ray_joy_ride_II_engine_room_9	20
51_sea_ray_joy_ride_II_engine_room_10	20
51_sea_ray_joy_ride_II_engine_room_11	20
51_sea_ray_joy_ride_II_engine_room_12	20
<b>CONTACTS</b>	<b>21</b>
Contact details	21
Telephones	21
Office hours	21
Address	21

---

# SPECIFICATIONS

---

## Overview

---

"Joy Ride II" represents an incredible opportunity in a large express cruiser due to the nature of her considerate, experienced owners. In addition to new pods, she just completed a major service (detailed below) to the engines, pods, generator, and cooling systems to make sure she is completely turnkey for her next owners and will provide years of reliable enjoyment. Also, a bottom job and stem to stern punch list were just completed. We have never seen a seller this proactive in preparing their boat for sale, and thus do not expect her to last long in today's market.

## Basic Information

---

**Category:** Motor Yacht

**Model Year:** 2013

**Year Built:** 2012

**Country:** United States

## Dimensions

---

**LOA:** 51' (15.54mm)

## Accommodations

---

**Total Cabins:** 2

**Total Heads:** 2

## Hull and Deck Information

---

**Hull Material:** Fiberglass

## Engine Information

---

**Engines:** 2

**Manufacturer:** Cummins

**Engine Type:** Inboard

**Fuel Type:** Diesel

# PHOTOS

51\_sea\_ray\_joy\_ride\_II\_profiles\_8



51\_sea\_ray\_joy\_ride\_II\_profiles\_10



51\_sea\_ray\_joy\_ride\_II\_profiles\_13



51\_sea\_ray\_joy\_ride\_II\_profiles\_3



51\_sea\_ray\_joy\_ride\_II\_profiles\_6



51\_sea\_ray\_joy\_ride\_II\_profiles\_4

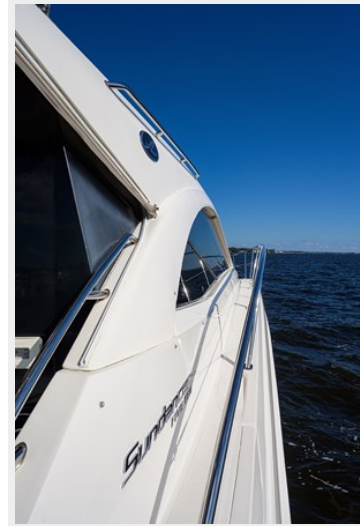




51\_sea\_ray\_joy\_ride\_II\_profiles\_14



51\_sea\_ray\_joy\_ride\_II\_bow\_1



51\_sea\_ray\_joy\_ride\_II\_bow\_2



51\_sea\_ray\_joy\_ride\_II\_bow\_3



51\_sea\_ray\_joy\_ride\_II\_bow\_4



51\_sea\_ray\_joy\_ride\_II\_bow\_5





51\_sea\_ray\_joy\_ride\_II\_bow\_6



51\_sea\_ray\_joy\_ride\_II\_bow\_7



51\_sea\_ray\_joy\_ride\_II\_bow\_8



51\_sea\_ray\_joy\_ride\_II\_cockpit\_1



51\_sea\_ray\_joy\_ride\_II\_cockpit\_2



51\_sea\_ray\_joy\_ride\_II\_cockpit\_3



51\_sea\_ray\_joy\_ride\_II\_cockpit\_4



51\_sea\_ray\_joy\_ride\_II\_cockpit\_9



51\_sea\_ray\_joy\_ride\_II\_cockpit\_10



51\_sea\_ray\_joy\_ride\_II\_swim\_platform\_1



51\_sea\_ray\_joy\_ride\_II\_swim\_platform\_2



51\_sea\_ray\_joy\_ride\_II\_swim\_platform\_3





51\_sea\_ray\_joy\_ride\_II\_sunroom\_1



51\_sea\_ray\_joy\_ride\_II\_sunroom\_2



51\_sea\_ray\_joy\_ride\_II\_sunroom\_3



51\_sea\_ray\_joy\_ride\_II\_sunroom\_4



51\_sea\_ray\_joy\_ride\_II\_sunroom\_5



51\_sea\_ray\_joy\_ride\_II\_sunroom\_6



51\_sea\_ray\_joy\_ride\_II\_sunroom\_8



51\_sea\_ray\_joy\_ride\_II\_sunroom\_7



51\_sea\_ray\_joy\_ride\_II\_sunroom\_9



51\_sea\_ray\_joy\_ride\_II\_sunroom\_10



51\_sea\_ray\_joy\_ride\_II\_sunroom\_11



51\_sea\_ray\_joy\_ride\_II\_sunroom\_12





51\_sea\_ray\_joy\_ride\_II\_helm\_1



51\_sea\_ray\_joy\_ride\_II\_helm\_2



51\_sea\_ray\_joy\_ride\_II\_helm\_3



51\_sea\_ray\_joy\_ride\_II\_helm\_4



51\_sea\_ray\_joy\_ride\_II\_helm\_5



51\_sea\_ray\_joy\_ride\_II\_salon\_1



51\_sea\_ray\_joy\_ride\_II\_salon\_2



51\_sea\_ray\_joy\_ride\_II\_salon\_3



51\_sea\_ray\_joy\_ride\_II\_salon\_4



51\_sea\_ray\_joy\_ride\_II\_salon\_5



51\_sea\_ray\_joy\_ride\_II\_salon\_6



51\_sea\_ray\_joy\_ride\_II\_salon\_7





51\_sea\_ray\_joy\_ride\_II\_galley\_1



51\_sea\_ray\_joy\_ride\_II\_galley\_2



51\_sea\_ray\_joy\_ride\_II\_galley\_3



51\_sea\_ray\_joy\_ride\_II\_galley\_4



51\_sea\_ray\_joy\_ride\_II\_galley\_5



51\_sea\_ray\_joy\_ride\_II\_master\_stateroom\_1



51\_sea\_ray\_joy\_ride\_II\_master\_stateroom\_2



51\_sea\_ray\_joy\_ride\_II\_master\_stateroom\_3



51\_sea\_ray\_joy\_ride\_II\_master\_stateroom\_4



51\_sea\_ray\_joy\_ride\_II\_master\_stateroom\_5



51\_sea\_ray\_joy\_ride\_II\_master\_stateroom\_head\_1 51\_sea\_ray\_joy\_ride\_II\_master\_stateroom\_head\_2





51\_sea\_ray\_joy\_ride\_II\_master\_stateroom\_head\_3



51\_sea\_ray\_joy\_ride\_II\_master\_stateroom\_head\_4



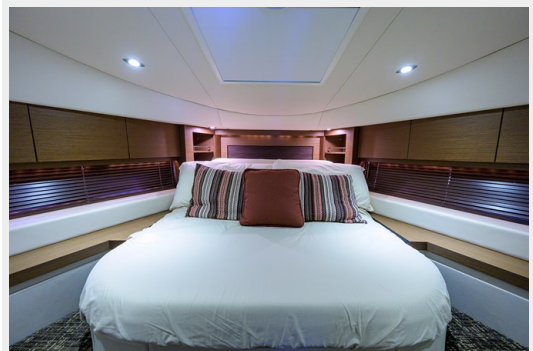
51\_sea\_ray\_joy\_ride\_II\_master\_stateroom\_head\_5 51\_sea\_ray\_joy\_ride\_II\_master\_stateroom\_head\_6



51\_sea\_ray\_joy\_ride\_II\_forward\_stateroom\_1



51\_sea\_ray\_joy\_ride\_II\_forward\_stateroom\_2



51\_sea\_ray\_joy\_ride\_II\_forward\_stateroom\_3

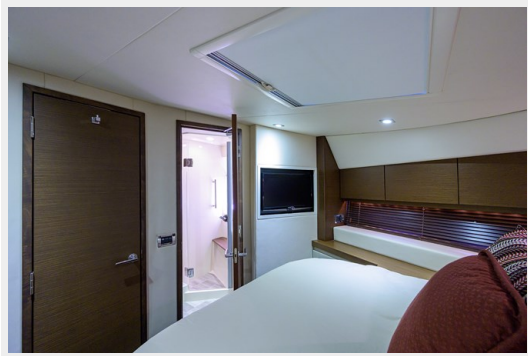


51\_sea\_ray\_joy\_ride\_II\_forward\_stateroom\_4



51\_sea\_ray\_joy\_ride\_II\_forward\_stateroom\_head\_1

51\_sea\_ray\_joy\_ride\_II\_forward\_stateroom\_5



51\_sea\_ray\_joy\_ride\_II\_forward\_stateroom\_head\_2



51\_sea\_ray\_joy\_ride\_II\_forward\_stateroom\_head\_3

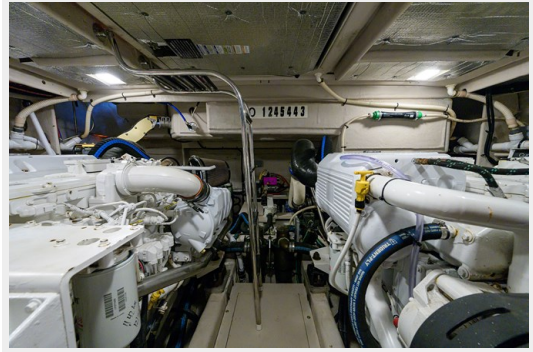




51\_sea\_ray\_joy\_ride\_II\_engine\_room\_1



51\_sea\_ray\_joy\_ride\_II\_engine\_room\_2



51\_sea\_ray\_joy\_ride\_II\_engine\_room\_3



51\_sea\_ray\_joy\_ride\_II\_engine\_room\_4



51\_sea\_ray\_joy\_ride\_II\_engine\_room\_5



51\_sea\_ray\_joy\_ride\_II\_engine\_room\_7



51\_sea\_ray\_joy\_ride\_II\_engine\_room\_8



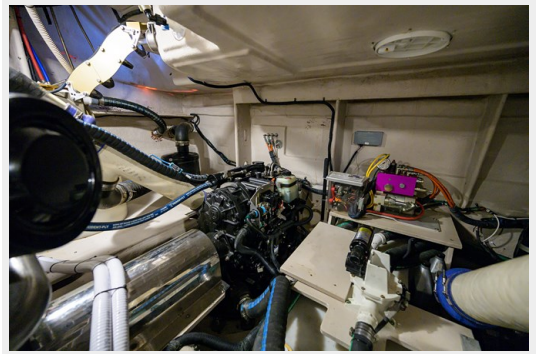
51\_sea\_ray\_joy\_ride\_II\_engine\_room\_9



51\_sea\_ray\_joy\_ride\_II\_engine\_room\_10



51\_sea\_ray\_joy\_ride\_II\_engine\_room\_11



51\_sea\_ray\_joy\_ride\_II\_engine\_room\_12





# CONTACTS

---

Andrey Shestakov, leading yacht broker of the sales department of Shestakov Yacht Sales Inc. Shestakov Yacht Sales Inc., the official representative of the Miami/Fort Lauderdale FL headquarters.

## Contact details

---

Email: [andrey@shestakovyachtsales.com](mailto:andrey@shestakovyachtsales.com)

Web: [shestakovyachtsales.com/en/](http://shestakovyachtsales.com/en/)

## Telephones

---

USA: +1(954)274-4435

## Office hours

---

Monday – Saturday: **9:00 - 21:00 EDT**

Sunday: **closed**

## Address

---



Harbour Towne Marina, 850 NE 3rd St,  
STE 213, Dania, FL 33004