

# SOULMATE — DL YACHTS - DREAMLINE



**Builder:** DL YACHTS - DREAMLINE

**Year Built:** 2015

**Model:** Semi-Displacement

**Price:** PRICE ON APPLICATION

**Location:** Croatia

**LOA:** 112' 7" (34.3mm)

**Beam:** 23.78

**Max Draft:** 6' 11" (2.1mm)

**Cruise Speed:** 14 Knots Kts. (16 MPH)

**Max Speed:** 20 Knots Kts. (23 MPH)

Our experienced yacht broker, Andrey Shestakov, will help you choose and buy a yacht that best suits your needs **SOULMATE — DL YACHTS - DREAMLINE** from our catalogue. Presently, at Shestakov Yacht Sales Inc., we have a wide variety of yachts available on our sale's list. We also work in close contact with all the big yacht manufacturers from all over the world.

If you would like to buy a yacht **SOULMATE — DL YACHTS - DREAMLINE** or would like help answering any questions concerning purchasing, selling or chartering a yacht, please call **+1(954)274-4435**

---

# TABLE OF CONTENTS

---

TABLE OF CONTENTS	2
SPECIFICATIONS	4
Overview	4
Basic Information	4
Dimensions	4
Speed, Capacities and Weight	4
Accommodations	5
Hull and Deck Information	5
Engine Information	5
PHOTOS	6
11436.0	6
11436.1	6
11436.2	6
11436.3	6
11436.4	6
11436.5	6
11436.6	7
11436.7	7
11436.8	7
11436.9	7
11436.10	7
11436.11	7
11436.12	8
11436.13	8
11436.14	8
11436.15	8
11436.16	8
11436.17	8

---

11436.18	9
11436.19	9
CONTACTS	10
Contact details	10
Telephones	10
Office hours	10
Address	10

---

# SPECIFICATIONS

---

## Overview

---

Launched in late summer 2015 and delivered to her first Owner in Spring 2016, the award winning SOULMATE provides the facilities and volume of a much larger yacht in a supremely elegant and sophisticated package, with over two million Euros of options specified. Providing accommodation for up to 10 guests in 5 beautifully appointed cabins, the yacht presents in immaculate condition following extensive winter works. A unique feature of this yacht is that she complies fully with Maltese commercial registration while also benefitting from full EU VAT paid status, allowing her to switch registrations at will according to her Owner's wishes.

## Basic Information

---

**Category:** Semi-Displacement

**Sub Category:** Semi-Displacement

**Model Year:** 2016

**Year Built:** 2015

**Country:** Croatia

## Dimensions

---

**LOA:** 112' 7" (34.3mm)

**Beam:** 23.78

**Max Draft:** 6' 11" (2.1mm)

## Speed, Capacities and Weight

---

**Cruise Speed:** 14 Knots Kts. (16 MPH)

**Cruise Speed Range:** 1000

**Max Speed:** 20 Knots Kts. (23 MPH)

**Gross Tonnage:** 207 Pounds

**Water Capacity:** 2400 Gallons

**Fuel Capacity:** 3566.32 Gal Gallons

---

## Accommodations

---

**Total Cabins:** 5

**Sleeps:** 10

**Crew Berths:** 6

---

## Hull and Deck Information

---

**Hull Material:** GRP

**Deck Material:** Teak

**Hull Configuration:** Semi-Displacement

**Exterior Designer:** Enrico  
Gobbi/Team4Design

**Interior Designer:** Enrico  
Gobbi/Team4Design

---

## Engine Information

---

**Engines:** 2

**Manufacturer:** MTU

**Engine Type:** Inboard

**Fuel Type:** Diesel

# PHOTOS

11436.0



11436.1



11436.2



11436.3



11436.4



11436.5



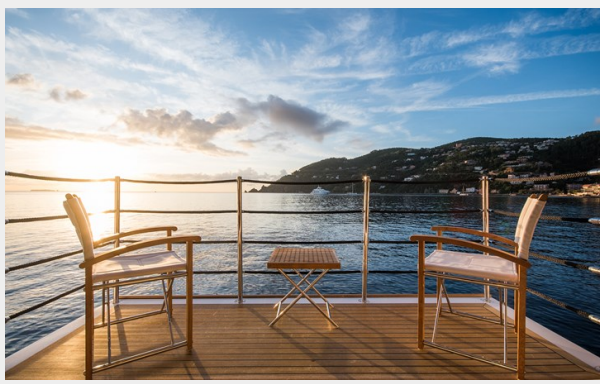
11436.6



11436.7



11436.8



11436.9



11436.10



11436.11



11436.12



11436.13



11436.14



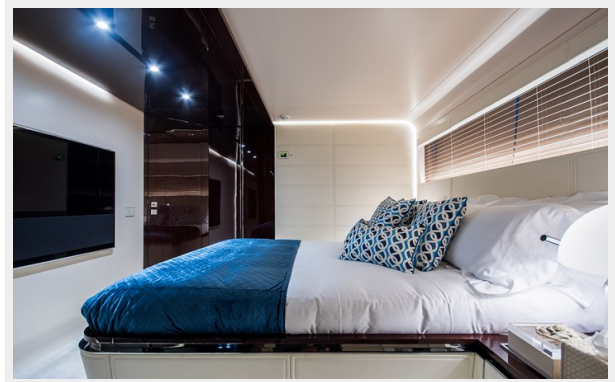
11436.15



11436.16



11436.17

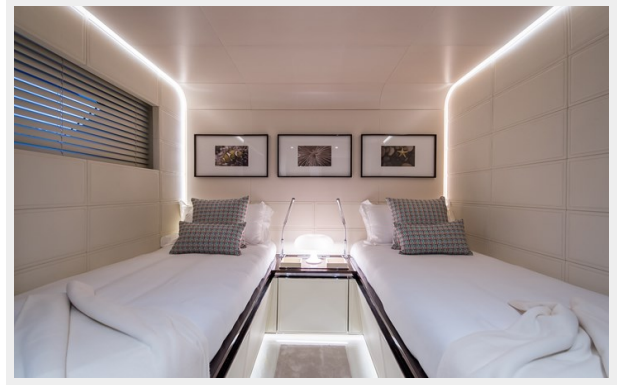




11436.18



11436.19



# CONTACTS

---

Andrey Shestakov, leading yacht broker of the sales department of Shestakov Yacht Sales Inc. Shestakov Yacht Sales Inc., the official representative of the Miami/Fort Lauderdale FL headquarters.

## Contact details

---

Email: [andrey@shestakovyachtsales.com](mailto:andrey@shestakovyachtsales.com)

Web: [shestakovyachtsales.com/en/](http://shestakovyachtsales.com/en/)

## Telephones

---

USA: +1(954)274-4435

## Office hours

---

Monday – Saturday: **9:00 - 21:00** EDT

Sunday: **closed**

## Address

---



Harbour Towne Marina, 850 NE 3rd St,  
STE 213, Dania, FL 33004