

## YOLO — RANGER TUGS



**Builder:** RANGER TUGS

**Year Built:** 2011

**Model:** trawler

**Price:** PRICE ON APPLICATION

**Location:** United States

**LOA:** 27' (8.23m)

**Beam:** 8.5

**Max Draft:** 2' 2" (0.66m)

**Cruise Speed:** 10 Knots Kts. (12 MPH)

**Max Speed:** 16 Knots Kts. (18 MPH)

Our experienced yacht broker, Andrey Shestakov, will help you choose and buy a yacht that best suits your needs **Yolo — RANGER TUGS** from our catalogue. Presently, at Shestakov Yacht Sales Inc., we have a wide variety of yachts available on our sale's list. We also work in close contact with all the big yacht manufacturers from all over the world.

If you would like to buy a yacht **Yolo — RANGER TUGS** or would like help answering any questions concerning purchasing, selling or chartering a yacht, please call **+1(954)274-4435**

# TABLE OF CONTENTS

---

TABLE OF CONTENTS	2
SPECIFICATIONS	5
Overview	5
Basic Information	5
Dimensions	6
Speed, Capacities and Weight	6
Accommodations	6
Hull and Deck Information	6
Engine Information	6
PHOTOS	7
1_2795952_port_profile	7
2_2795952_port_stern_profile	7
3_2795952_stern_profile	7
4_2795952_cockpit_forward	7
5_2795952_cockpit_port	7
6_2795952_cockpit_starboard	7
7_2795952_cockpit_aft	7
8_2795952_main_cabin_forward	7
9_2795952_main_cabin_port	8
10_2795952_main_cabin_dinette	8
11_2795952_main_cabin_mates_bench	8
12_2795952_main_cabin_starboard	8
14_2795952_main_cabin_helm	8
13_2795952_main_cabin_starboard_galley_extended	8
15_2795952_main_cabin_aft	9
16_2795952_master_stateroom_forward	9
17_2795952_master_stateroom_port	9
18_2795952_master_stateroom_starboard	9

19_2795952_guest_stateroom_forward	9
20_2795952_guest_stateroom_aft	9
21_2795952_head_vanity	10
22_2795952_head_toilet	10
23_2795952_main_engine	10
24_2795952_fuel_filtration	10
25_2795952_shaft_seal	10
26_2795952_water_heater	10
27_2795952_generator	11
28_2795952_generator_top	11
29_2795952_generator_front	11
30_2795952_battery_charger	11
31_2795952_battery_bank	11
32_2795952_battery_management	11
33_2795952_electrical_panel	12
34_2795952_galvanic_isolator	12
36_2795952_outboard	12
35_2795952_dinghy	12
37_2795952_weaver_davits	12
38_2795952_propane_locker	12
39_2795952_port_sidewalk	13
40_2795952_starboard_sidewalk	13
42_2795952_bow_pulpit	13
41_2795952_fore_deck	13
43_2795952_windlass	13
44_2795952_anchor	13
45_2795952_anchor_rod	14
CONTACTS	15
Contact details	15

---

Telephones	15
Office hours	15
Address	15

---

# SPECIFICATIONS

---

## Overview

---

PRICE REDUCED!

YOLO is a well outfitted 2011 Ranger Tugs R-27 that has been nicely maintained, outfitted and upgraded for cruising. The boat features a new West Marine RIB and Mercury outboard engine, a Mase 3.3 KW generator, a reverse cycle air conditioner and heater, side enclosures for the cockpit and a propane stove. The Yanmar 4BY2 180 HP diesel main engine provides more than enough power to cruise this boat upward of 16 knots. A SportRack roof storage box has also been installed to provide a large amount of additional storage to this smaller footprint boat. This boat has completed the Great Loop and is turnkey and ready to continue on the Great Loop or other cruising adventures.

A trailer is possibly available. Contact the listing broker for details.

Recent Upgrades & Maintenance includes:

- New engine mounts installed (2021)
- New neutral safety switch installed (2021)
- New fresh water pump installed (2021)
- AIS installed (2022)
- New raw water pump installed (2022)
- New shower sump pump and float switch installed (2022)
- New battery charger installed (2022)
- New aft bilge pump and float switch installed (2022)
- New Jabsco 37010-3092 electric marine toilet installed (2022)
- Replaced the engine impeller with 1,325 hours on engine (2022)
- New zincs installed (2022)
- New sanitary lines installed (2022)

---

## Basic Information

---

**Category:** trawler

**Model Year:** 2011

**Year Built:** 2011

**Country:** United States

---

## Dimensions

---

**LOA:** 27' (8.23mm)

**Beam:** 8.5

**Max Draft:** 2' 2" (0.66mm)

---

## Speed, Capacities and Weight

---

**Cruise Speed:** 10 Knots Kts. (12 MPH)

**Max Speed:** 16 Knots Kts. (18 MPH)

**Water Capacity:** 40 Gallons

**Holding Tank:** 30 Gal Gallons

**Fuel Capacity:** 100 Gal Gallons

---

## Accommodations

---

**Total Cabins:** 2

**Sleeps:** 6

**Total Heads:** 1

---

## Hull and Deck Information

---

**Hull Material:** Ferro-Cement

---

## Engine Information

---

**Engines:** 1

**Manufacturer:** Yanmar

**Engine Type:** Inboard

**Fuel Type:** Diesel

# PHOTOS

1\_2795952\_port\_profile



2\_2795952\_port\_stern\_profile



3\_2795952\_stern\_profile



4\_2795952\_cockpit\_forward



5\_2795952\_cockpit\_port



6\_2795952\_cockpit\_starboard



7\_2795952\_cockpit\_aft



8\_2795952\_main\_cabin\_forward



9\_2795952\_main\_cabin\_port



10\_2795952\_main\_cabin\_dinette



11\_2795952\_main\_cabin\_mates\_bench



12\_2795952\_main\_cabin\_starboard



14\_2795952\_main\_cabin\_helm



13\_2795952\_main\_cabin\_starboard\_galley\_extended





15\_2795952\_main\_cabin\_aft



16\_2795952\_master\_stateroom\_forward



17\_2795952\_master\_stateroom\_port



18\_2795952\_master\_stateroom\_starboard



19\_2795952\_guest\_stateroom\_forward



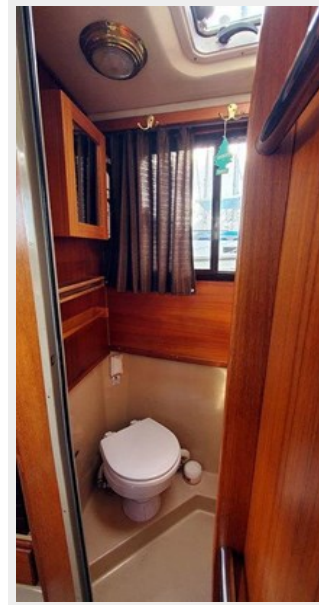
20\_2795952\_guest\_stateroom\_aft



21\_2795952\_head\_vanity



22\_2795952\_head\_toilet



23\_2795952\_main\_engine



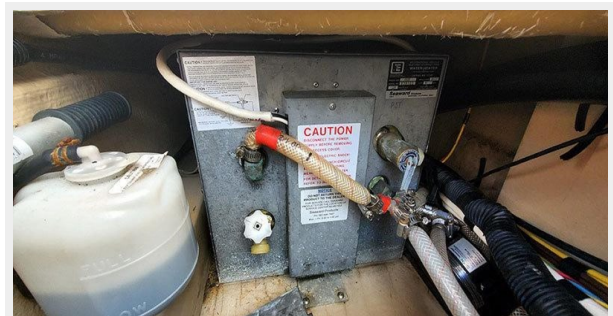
24\_2795952\_fuel\_filtration



25\_2795952\_shaft\_seal



26\_2795952\_water\_heater



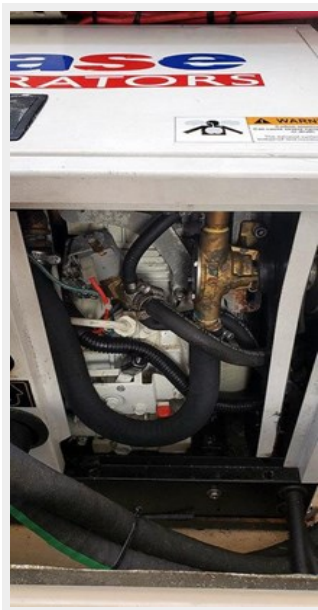
27\_2795952\_generator



28\_2795952\_generator\_top



29\_2795952\_generator\_front



30\_2795952\_battery\_charger



31\_2795952\_battery\_bank



32\_2795952\_battery\_management



33\_2795952\_electrical\_panel



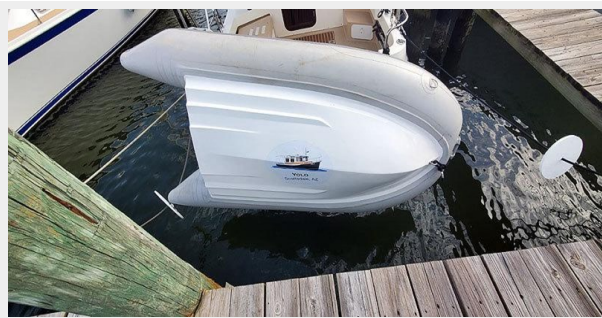
34\_2795952\_galvanic\_isolator



36\_2795952\_outboard



35\_2795952\_dinghy



37\_2795952\_weaver\_davits



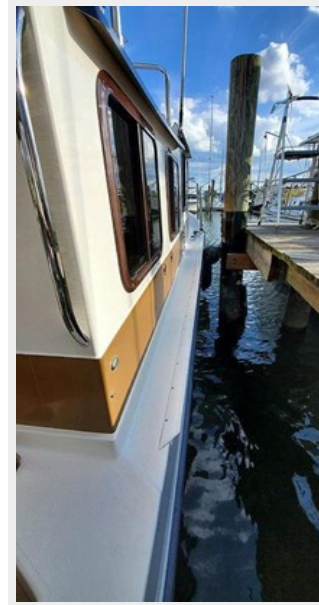
38\_2795952\_propane\_locker



39\_2795952\_port\_sidewalk



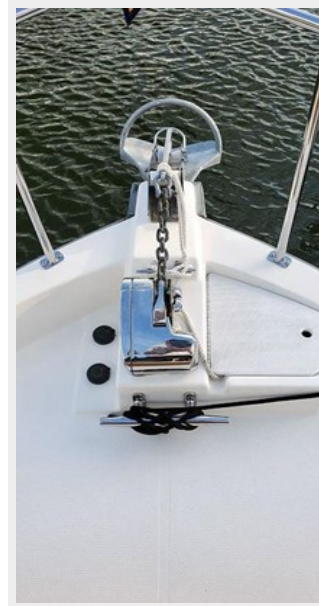
40\_2795952\_starboard\_sidewalk



41\_2795952\_fore\_deck



42\_2795952\_bow\_pulpit



43\_2795952\_windlass



44\_2795952\_anchor



**45\_2795952\_anchor\_rod**



# CONTACTS

---

Andrey Shestakov, leading yacht broker of the sales department of Shestakov Yacht Sales Inc. Shestakov Yacht Sales Inc., the official representative of the Miami/Fort Lauderdale FL headquarters.

## Contact details

---

Email: [andrey@shestakovyachtsales.com](mailto:andrey@shestakovyachtsales.com)

Web: [shestakovyachtsales.com/en/](http://shestakovyachtsales.com/en/)

## Telephones

---

USA: +1(954)274-4435

## Office hours

---

Monday – Saturday: **9:00 - 21:00** EDT

Sunday: **closed**

## Address

---



Harbour Towne Marina, 850 NE 3rd St,  
STE 213, Dania, FL 33004