

## DESERT — FERRETTI YACHTS



**Builder:** FERRETTI YACHTS

**Year Built:** 2012

**Model:** Motor Yacht

**Price:** PRICE ON APPLICATION

**Location:** France

**LOA:** 71' 6" (21.79mm)

**Beam:** 18.7

**Min Draft:** 9' 8" (2.93mm)

**Cruise Speed:** 27 Knots Kts. (31 MPH)

**Max Speed:** 32 Knots Kts. (37 MPH)

Our experienced yacht broker, Andrey Shestakov, will help you choose and buy a yacht that best suits your needs **Desert — FERRETTI YACHTS** from our catalogue. Presently, at **Shestakov Yacht Sales Inc.**, we have a wide variety of yachts available on our sale's list. We also work in close contact with all the big **yacht manufacturers** from all over the world.

If you would like to buy a yacht **Desert — FERRETTI YACHTS** or would like help answering any questions concerning purchasing, selling or chartering a yacht, please call **+1(954)274-4435**

# TABLE OF CONTENTS

---

TABLE OF CONTENTS	2
SPECIFICATIONS	4
Overview	4
Basic Information	4
Dimensions	5
Speed, Capacities and Weight	5
Accommodations	5
Hull and Deck Information	5
Engine Information	5
PHOTOS	6
DESERT (1)	6
DESERT (2)	6
DESERT (3)	6
DESERT (4)	6
DESERT (5)	6
DESERT (6)	6
DESERT (7)	7
DESERT (8)	7
DESERT (9)	7
DESERT (10)	7
DESERT (11)	7
DESERT (12)	7
DESERT (13)	8
DESERT (14)	8
DESERT (15)	8
DESERT (16)	8
DESERT (17)	8
DESERT (18)	8

---

DESERT (19)	9
DESERT (20)	9
DESERT (21)	9
DESERT (22)	9
DESERT (23)	9
DESERT (25)	9
DESERT (26)	10
DESERT (27)	10
DESERT (28)	10
DESERT (30)	10
DESERT (31)	10
DESERT (32)	10
DESERT (33)	11
CONTACTS	12
Contact details	12
Telephones	12
Office hours	12
Address	12

---

# SPECIFICATIONS

---

## Overview

---

### KEEN SELLER!

#### KEY FEATURES

- In good condition
- Timeless design
- One owner since new
- Maintained to high standards
- Never chartered
- Contemporary interiors and great performance
- Engine hours 1050h (December, 2022)

An evolution of the successful 731 series, that has been enjoyed by yachting enthusiasts around the world for almost two decades, DESERT demonstrates Ferretti Yachts' dominance in the sub 24 meter flybridge category. DESERT is amongst the finest of examples of the Ferretti 720 model, having been enjoyed by only one owner since her inception. Presenting in pristine condition and readily available for inspections. Elegant, minimal and refined interiors DESERT boasts large windows giving brightness to the area, wide salon, comfortable sofas. She offers a table for up to 8 guests in salon and well equipped galley with fridge, oven, dishwasher, washing machine. The night area offers accommodation for up to 8 guests in 4 staterooms: aft Owner stateroom with ensuite head; forward Vip stateroom with double-bed and ensuite toilet; aft Twin stateroom with 2 separate single beds and ensuite toilet (easily accessible from the corridor); forward Twin stateroom with 2 separate single beds and ensuite toilet. Spacious sunbathing areas forward and astern with comfortable cushions for the maximum comfort and relax; wide cockpit with dining table for al fresco dining. The motoryacht boasts a cockpit equipped with table, sofa and vertical awning. Table for al fresco dining on the upper deck with awning. Comfortable bathing platform giving easy access to the sea.

---

## Basic Information

---

**Category:** Motor Yacht

**Model Year:** 2012

**Year Built:** 2012

**Country:** France

---

## Dimensions

---

**LOA:** 71' 6" (21.79mm)

**Beam:** 18.7

**Min Draft:** 9' 8" (2.93mm)

---

## Speed, Capacities and Weight

---

**Cruise Speed:** 27 Knots Kts. (31 MPH) **Max Speed:** 32 Knots Kts. (37 MPH)

**Fuel Capacity:** 1320.86 Gal Gallons

---

## Accommodations

---

**Total Cabins:** 4

---

## Hull and Deck Information

---

**Hull Material:** GRP

**Hull Configuration:** Planing

**Exterior Designer:** Zuccon

---

## Engine Information

---

**Engines:** 2

**Manufacturer:** MTU

# PHOTOS

**DESERT (1)**



**DESERT (2)**



**DESERT (3)**



**DESERT (4)**



**DESERT (5)**



**DESERT (6)**



**DESERT (7)**



**DESERT (8)**



**DESERT (9)**



**DESERT (10)**



**DESERT (11)**



**DESERT (12)**



**DESERT (13)**



**DESERT (14)**



**DESERT (15)**



**DESERT (16)**



**DESERT (17)**



**DESERT (18)**





**DESERT (19)**



**DESERT (20)**



**DESERT (21)**



**DESERT (22)**



**DESERT (23)**



**DESERT (25)**



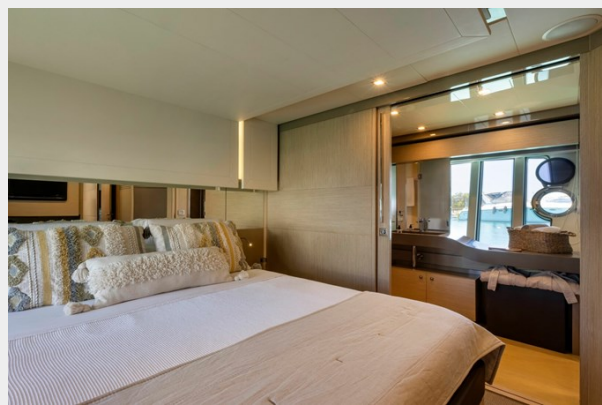
**DESERT (26)**



**DESERT (27)**



**DESERT (28)**



**DESERT (30)**



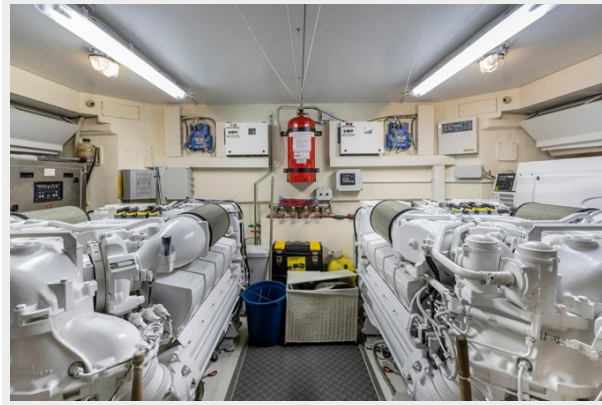
**DESERT (31)**



**DESERT (32)**



## DESERT (33)



# CONTACTS

---

Andrey Shestakov, leading yacht broker of the sales department of Shestakov Yacht Sales Inc. Shestakov Yacht Sales Inc., the official representative of the Miami/Fort Lauderdale FL headquarters.

## Contact details

---

Email: **andrey@shestakovyachtsales.com**

Web: [shestakovyachtsales.com/en/](http://shestakovyachtsales.com/en/)

## Telephones

---

USA: **+1(954)274-4435**

## Office hours

---

Monday – Saturday: **9:00 - 21:00** EDT

Sunday: **closed**

## Address

---



Harbour Towne Marina, 850 NE 3rd St, STE 213, Dania, FL 33004