

CHRISTMAS — EASTERN SHIPBUILDING GROUP



Builder:

EASTERN SHIPBUILDING GROUP

Year Built: 1931

Model: Classic Yacht

Price: PRICE ON APPLICATION

Location: France

LOA: 45' (13.72mm)

Beam: 12.13

Min Draft: 7' 4" (2.22mm)

Max Draft: 7' 4" (2.22mm)

Our experienced yacht broker, Andrey Shestakov, will help you choose and buy a yacht that best suits your needs **Christmas — EASTERN SHIPBUILDING GROUP** from our catalogue. Presently, at Shestakov Yacht Sales Inc., we have a wide variety of yachts available on our sale's list. We also work in close contact with all the big yacht manufacturers from all over the world.

If you would like to buy a yacht **Christmas — EASTERN SHIPBUILDING GROUP** or would like help answering any questions concerning purchasing, selling or chartering a yacht, please call **+1(954)274-4435**

TABLE OF CONTENTS

TABLE OF CONTENTS	2
SPECIFICATIONS	4
Overview	4
Basic Information	4
Dimensions	4
Accommodations	4
Hull and Deck Information	4
Engine Information	5
PHOTOS	6
Christmas op de Wal (1)	6
Christmas1	6
Christmas2	6
Christmas5	6
Christmas6	7
Christmas7	7
Christmas8	7
Christmas9	7
Christmas9m	7
Christmas10	7
Christmas11	8
Christmas14	8
Christmas15	8
Christmas16	8
Christmas17m	8
Christmas18	8
Christmas19	9
Layout	9
White_Topsides_(1)-transformed	9

White_Topsides_(2)-transformed	9
White_Topsides_(3)-xNSRu9YXP-transformed 2	9
CONTACTS	10
Contact details	10
Telephones	10
Office hours	10
Address	10

SPECIFICATIONS

Overview

CHRISTMAS is a lovely Starling Burgess double-ended cruising boat with an excellent turn of speed. As one of the most admired classic boats in this size range. Christmas has proved her abilities cruising in the Caribbean and Mediterranean, including participation in the Antigua Classic Yacht Regatta.

The 1931 CHRISTMAS received an extremely extensive and thorough restoration at Rockport Marine in 1995. Her owner has literally spared no expense to put her in the best possible condition. Her new bulb keel, slightly heavier than the old one, and her new carbon-fiber mast, substantially lighter than her old rig, have made her a faster and more stable yacht. Ever since, the owner kept the yacht in pristine condition. Highly recommended for anyone desiring a superlative classic wooden boat.

Basic Information

Category: Classic Yacht

Model Year: 1931

Year Built: 1931

Country: France

Dimensions

LOA: 45' (13.72mm)

Beam: 12.13

Min Draft: 7' 4" (2.22mm)

Max Draft: 7' 4" (2.22mm)

Accommodations

Total Cabins: 2

Hull and Deck Information

Hull Material: Wood

Engine Information

Engines: 1

Manufacturer: Beta

PHOTOS

Christmas op de Wal (1)



Christmas1



Christmas2



Christmas5



Christmas6



Christmas7



Christmas8



Christmas9



Christmas9m



Christmas10



Christmas11



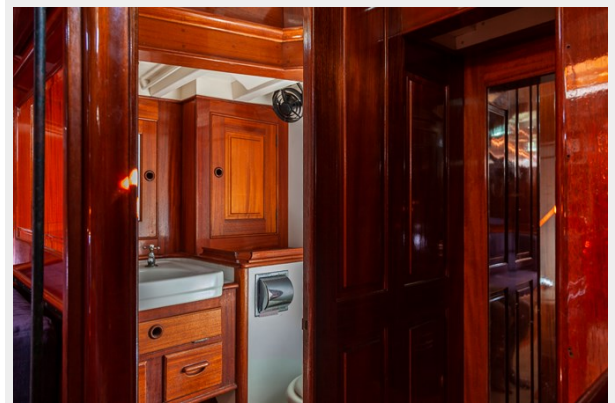
Christmas14



Christmas15



Christmas16



Christmas17m



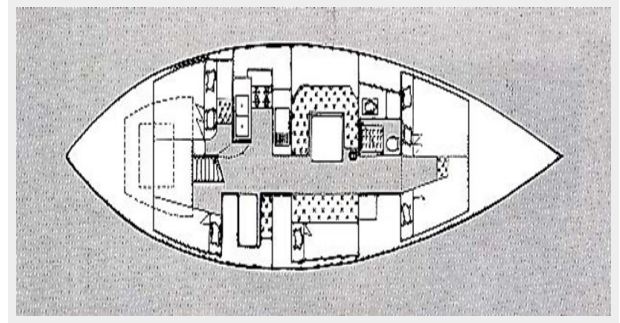
Christmas18



Christmas19



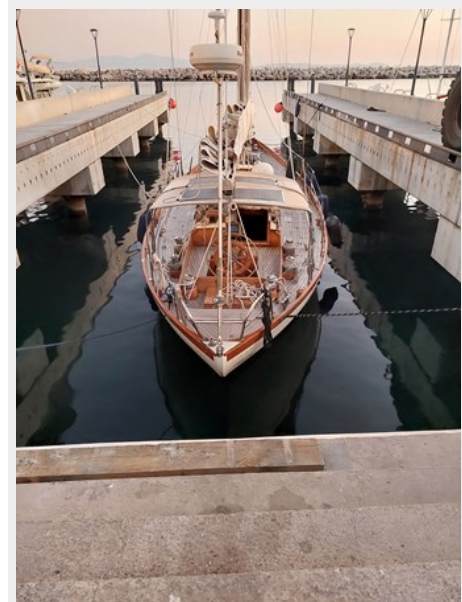
Layout



White_Topsides_(1)-transformed



White_Topsides_(2)-transformed



White_Topsides_(3)-xNSRu9YXP-transformed 2



CONTACTS

Andrey Shestakov, leading yacht broker of the sales department of Shestakov Yacht Sales Inc. Shestakov Yacht Sales Inc., the official representative of the Miami/Fort Lauderdale FL headquarters.

Contact details

Email: andrey@shestakovyachtsales.com

Web: shestakovyachtsales.com/en/

Telephones

USA: +1(954)274-4435

Office hours

Monday – Saturday: **9:00 - 21:00** EDT

Sunday: **closed**

Address



Harbour Towne Marina, 850 NE 3rd St,
STE 213, Dania, FL 33004