

STATE OF GRACE — PERINI NAVI



Builder: PERINI NAVI

Year Built: 2013

Model: Cruising or Racing Sailboat

Price: PRICE ON APPLICATION

Location: France

LOA: 129' 4" (39.4mm)

Beam: 30.83

Min Draft: 11' 6" (3.5mm)

Max Draft: 29' 11" (9.1mm)

Cruise Speed: 9 Knots Kts. (10 MPH)

Max Speed: 14 Knots Kts. (16 MPH)

Our experienced yacht broker, Andrey Shestakov, will help you choose and buy a yacht that best suits your needs **STATE OF GRACE — PERINI NAVI** from our catalogue. Presently, at Shestakov Yacht Sales Inc., we have a wide variety of yachts available on our sale's list. We also work in close contact with all the big yacht manufacturers from all over the world.

If you would like to buy a yacht **STATE OF GRACE — PERINI NAVI** or would like help answering any questions concerning purchasing, selling or chartering a yacht, please call **+1(954)274-4435**

TABLE OF CONTENTS

TABLE OF CONTENTS	2
SPECIFICATIONS	5
Overview	5
Basic Information	5
Dimensions	5
Speed, Capacities and Weight	5
Accommodations	5
Hull and Deck Information	6
Engine Information	6
PHOTOS	7
SOG_exterior (1 of 141)	7
SOG_exterior (2 of 141)	7
SOG_Interior (3 of 69)	7
SOG_Interior (19 of 69)	7
SOG_Interior (20 of 69)	7
SOG_Interior (25 of 69)	7
SOG_Interior (26 of 69)	8
SOG_Interior (28 of 69)	8
SOG_Interior (1 of 69)	8
SOG_Interior (2 of 69)	8
SOG_Interior (4 of 69)	8
SOG_Interior (7 of 69)	8
SOG_Interior (21 of 69)	9
SOG_Interior (29 of 69)	9
SOG_Interior (30 of 69)	9
SOG_Interior (31 of 69)	9
SOG_Interior (44 of 69)	9
SOG_Interior (36 of 69)	9

SOG_Interior (54 of 69)	10
SOG_Interior (55 of 69)	10
SOG_Interior (57 of 69)	10
SOG_Interior (58 of 69)	10
SOG_Interior (59 of 69)	10
SOG_Interior (34 of 69)	10
SOG_Interior (38 of 69)	11
SOG_Interior (39 of 69)	11
SOG_Interior (40 of 69)	11
SOG_Interior (51 of 69)	11
SOG_Interior (52 of 69)	11
SOG_Interior (60 of 69)	11
SOG_Interior (61 of 69)	12
SOG_Interior (69 of 69)	12
SOG_exterior_more colourful (32 of 103)	12
SOG_exterior_more colourful (80 of 103)	12
SOG_exterior_more colourful (82 of 103)	12
SOG_exterior_more colourful (41 of 103)	12
SOG_exterior_more colourful (42 of 103)	13
SOG_exterior_more colourful (35 of 103)	13
SOG_exterior_more colourful (72 of 103)	13
SOG_exterior_more colourful (27 of 103)	13
SOG_exterior_more colourful (28 of 103)	13
SOG_exterior (116 of 141)	13
SOG_exterior (117 of 141)	14
SOG_exterior (118 of 141)	14
SOG_exterior (121 of 141)	14
SOG_exterior (123 of 141)	14
SOG_exterior (126 of 141)	14

CONTACTS	15
-----	-----
Contact details	15
-----	-----
Telephones	15
-----	-----
Office hours	15
-----	-----
Address	15
-----	-----

SPECIFICATIONS

Overview

With the brief to build a contemporary high-performance world cruising sloop, STATE OF GRACE was launched in 2013 as the first of Perini Navi's 40m Fast Cruising series. This stunning collaboration between Perini Navi and Ron Holland Design led her to be a finalist of six industry awards.

Basic Information

Category: Cruising or Racing Sailboat **Model Year:** 2013
Year Built: 2013 **Country:** France

Dimensions

LOA: 129' 4" (39.4mm) **LWL:** 111' 11" (34.1mm)
Beam: 30.83 **Min Draft:** 11' 6" (3.5mm)
Max Draft: 29' 11" (9.1mm)

Speed, Capacities and Weight

Cruise Speed: 9 Knots Kts. (10 MPH) **Max Speed:** 14 Knots Kts. (16 MPH)
Gross Tonnage: 254 Pounds **Water Capacity:** 5000 Gallons
Fuel Capacity: 3698.41 Gal Gallons

Accommodations

Total Cabins: 4

Hull and Deck Information

Hull Material: Aluminum

Deck Material: Teak over Aluminum

Exterior Designer: RON HOLLAND
DESIGN / PERINI NAVI

Engine Information

Engines: 1

Manufacturer: Caterpillar

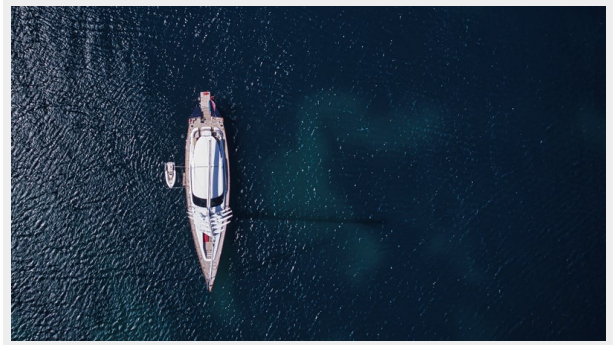
Fuel Type: Diesel

PHOTOS

SOG_exterior (1 of 141)



SOG_exterior (2 of 141)



SOG_Interior (3 of 69)



SOG_Interior (19 of 69)



SOG_Interior (20 of 69)



SOG_Interior (25 of 69)



SOG_Interior (26 of 69)



SOG_Interior (28 of 69)



SOG_Interior (1 of 69)



SOG_Interior (2 of 69)



SOG_Interior (4 of 69)



SOG_Interior (7 of 69)



SOG_Interior (21 of 69)



SOG_Interior (29 of 69)



SOG_Interior (30 of 69)



SOG_Interior (31 of 69)



SOG_Interior (44 of 69)



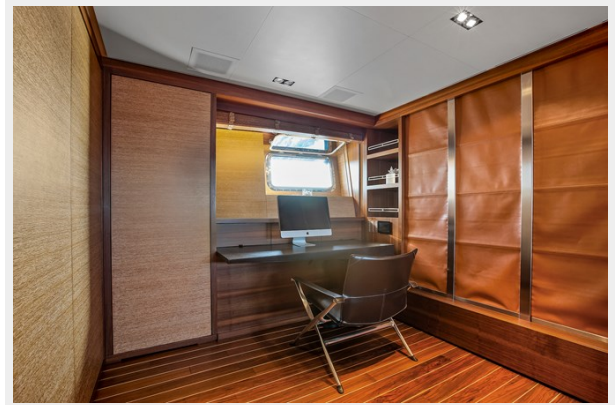
SOG_Interior (36 of 69)



SOG_Interior (54 of 69)



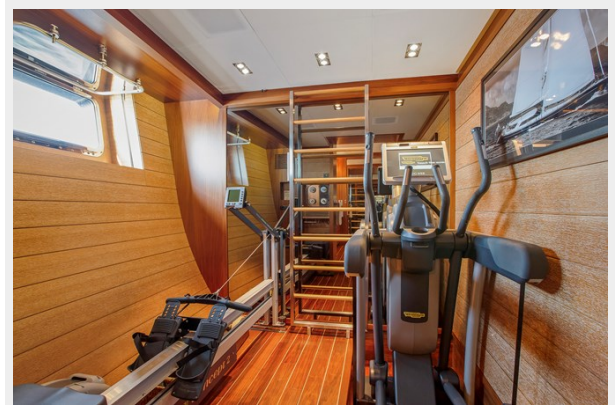
SOG_Interior (55 of 69)



SOG_Interior (57 of 69)



SOG_Interior (58 of 69)



SOG_Interior (59 of 69)



SOG_Interior (34 of 69)



SOG_Interior (38 of 69)



SOG_Interior (39 of 69)



SOG_Interior (40 of 69)



SOG_Interior (51 of 69)



SOG_Interior (52 of 69)



SOG_Interior (60 of 69)



SOG_Interior (61 of 69)



SOG_Interior (69 of 69)



SOG_exterior_more colourful (32 of 103)



SOG_exterior_more colourful (80 of 103)



SOG_exterior_more colourful (82 of 103)



SOG_exterior_more colourful (41 of 103)



SOG_exterior_more colourful (42 of 103)



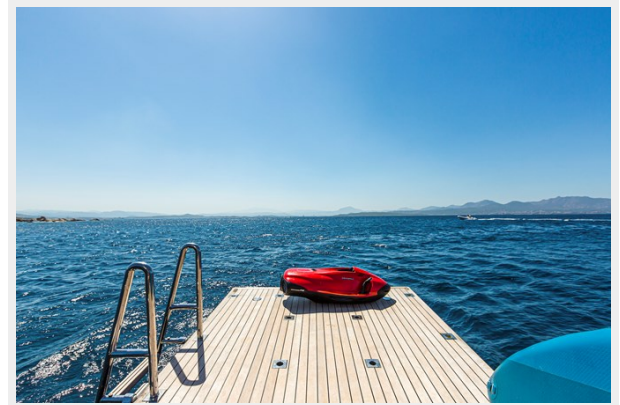
SOG_exterior_more colourful (35 of 103)



SOG_exterior_more colourful (72 of 103)



SOG_exterior_more colourful (27 of 103)



SOG_exterior_more colourful (28 of 103)



SOG_exterior (116 of 141)



SOG_exterior (117 of 141)



SOG_exterior (118 of 141)



SOG_exterior (121 of 141)



SOG_exterior (123 of 141)



SOG_exterior (126 of 141)



CONTACTS

Andrey Shestakov, leading yacht broker of the sales department of Shestakov Yacht Sales Inc. Shestakov Yacht Sales Inc., the official representative of the Miami/Fort Lauderdale FL headquarters.

Contact details

Email: andrey@shestakovyachtsales.com

Web: shestakovyachtsales.com/en/

Telephones

USA: +1(954)274-4435

Office hours

Monday – Saturday: **9:00 - 21:00** EDT

Sunday: **closed**

Address



Harbour Towne Marina, 850 NE 3rd St,
STE 213, Dania, FL 33004