

CHASING THIS — CHRIS-CRAFT



Builder: CHRIS-CRAFT

Year Built: 1964

Model: Motor Yacht

Price: PRICE ON APPLICATION

Location: United States

LOA: 38' (11.58mm)

Beam: 12.75

Max Draft: 2' 10" (0.86mm)

Cruise Speed: 18 Knots Kts. (21 MPH)

Max Speed: 22 Knots Kts. (25 MPH)

Our experienced yacht broker, Andrey Shestakov, will help you choose and buy a yacht that best suits your needs **Chasing This — CHRIS-CRAFT** from our catalogue. Presently, at Shestakov Yacht Sales Inc., we have a wide variety of yachts available on our sale's list. We also work in close contact with all the big yacht manufacturers from all over the world.

If you would like to buy a yacht **Chasing This — CHRIS-CRAFT** or would like help answering any questions concerning purchasing, selling or chartering a yacht, please call **+1(954)274-4435**

TABLE OF CONTENTS

TABLE OF CONTENTS	2
SPECIFICATIONS	6
Overview	6
Basic Information	6
Dimensions	6
Speed, Capacities and Weight	6
Accommodations	6
Hull and Deck Information	7
Engine Information	7
PHOTOS	8
0_2796186_	8
1_2796186_	8
2_2796186_	8
3_2796186_	8
4_2796186_	8
5_2796186_	8
6_2796186_	9
7_2796186_	9
8_2796186_	9
9_2796186_	9
10_2796186_	9
11_2796186_	9
12_2796186_	10
13_2796186_	10
14_2796186_	10
15_2796186_	10
16_2796186_	10
17_2796186_	10

18_2796186_	11
19_2796186_	11
20_2796186_	11
21_2796186_	11
22_2796186_	11
23_2796186_	11
24_2796186_	12
25_2796186_	12
26_2796186_	12
27_2796186_	12
28_2796186_	12
29_2796186_	12
30_2796186_	13
31_2796186_	13
32_2796186_	13
33_2796186_	13
34_2796186_	13
35_2796186_	13
36_2796186_	14
37_2796186_	14
38_2796186_	14
39_2796186_	14
40_2796186_	14
41_2796186_	14
42_2796186_	15
43_2796186_	15
44_2796186_	15
45_2796186_	15
46_2796186_	15

47_2796186_	15
48_2796186_	16
49_2796186_	16
50_2796186_	16
51_2796186_	16
52_2796186_	16
53_2796186_	16
54_2796186_	17
55_2796186_	17
56_2796186_	17
57_2796186_	17
58_2796186_	17
59_2796186_	17
60_2796186_	18
61_2796186_	18
62_2796186_	18
63_2796186_	18
64_2796186_	18
65_2796186_	18
66_2796186_	19
67_2796186_	19
68_2796186_	19
69_2796186_	19
70_2796186_	19
71_2796186_	19
72_2796186_	20
73_2796186_	20
74_2796186_	20
75_2796186_	20

76_2796186_	20
77_2796186_	20
78_2796186_	21
79_2796186_	21
80_2796186_	21
81_2796186_	21
82_2796186_	21
83_2796186_	21
84_2796186_	22
85_2796186_	22
CONTACTS	23
Contact details	23
Telephones	23
Office hours	23
Address	23

SPECIFICATIONS

Overview

Chris Craft 38 Offshore Roamer, unique find, refit 2021 with quartz countertop, new sink, refrigerator, couch, cushions, cabin sole, new head renovation, smart tv, internet-based security, new mattresses, new light fixtures, new bottom, new house paint and glass work, inside hull sanded and repainted, new splash guard, new diesel engines in 2011. Steel hull and steel frames, Pilot House, all weather design, quiet hull design with lots of luxury. New batteries on engine, generator and house. Blackstone Grill and dinghy included.

Basic Information

Category: Motor Yacht

Model Year: 1964

Year Built: 1964

Country: United States

Dimensions

LOA: 38' (11.58mm)

LWL: 35' 7" (10.85mm)

Beam: 12.75

Max Draft: 2' 10" (0.86mm)

Speed, Capacities and Weight

Cruise Speed: 18 Knots Kts. (21 MPH)

Max Speed: 22 Knots Kts. (25 MPH)

Water Capacity: 40 Gallons

Holding Tank: 40 Gal Gallons

Fuel Capacity: 250 Gal Gallons

Accommodations

Total Cabins: 3

Sleeps: 6

Total Heads: 2

Hull and Deck Information

Hull Material: Steel

Engine Information

Engines: 2

Manufacturer: Volvo

Engine Type: Inboard

Fuel Type: Diesel

PHOTOS

0_2796186_



1_2796186_



2_2796186_



3_2796186_



4_2796186_



5_2796186_



6_2796186_



7_2796186_



8_2796186_



9_2796186_



10_2796186_



11_2796186_



12_2796186_



13_2796186_



14_2796186_



15_2796186_



16_2796186_



17_2796186_



18_2796186_



19_2796186_



20_2796186_



21_2796186_



22_2796186_



23_2796186_



24_2796186_



25_2796186_



26_2796186_



27_2796186_



28_2796186_



29_2796186_



30_2796186_



31_2796186_



32_2796186_



33_2796186_



34_2796186_



35_2796186_



36_2796186_



37_2796186_



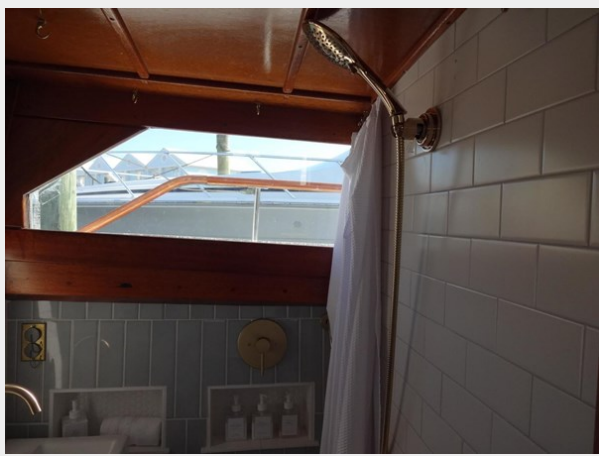
38_2796186_



39_2796186_



40_2796186_



41_2796186_



42_2796186_



43_2796186_



44_2796186_



45_2796186_



46_2796186_



47_2796186_



48_2796186_



49_2796186_



50_2796186_



51_2796186_



52_2796186_



53_2796186_



54_2796186_



55_2796186_



56_2796186_



57_2796186_



58_2796186_



59_2796186_



60_2796186_



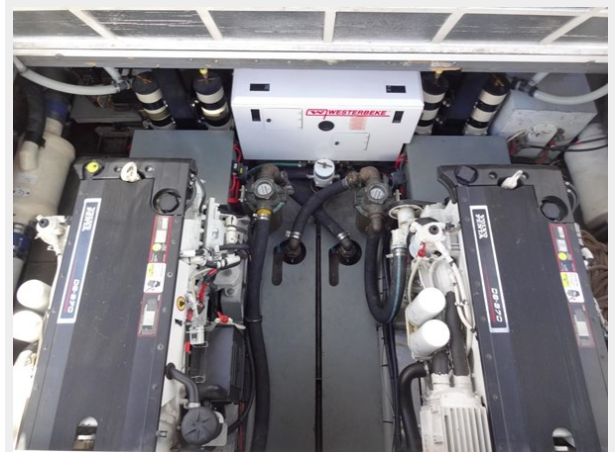
61_2796186_



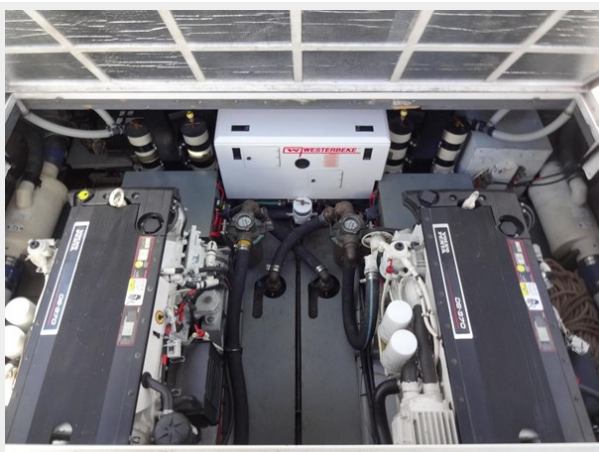
62_2796186_



63_2796186_



64_2796186_



65_2796186_



66_2796186_



67_2796186_



68_2796186_



69_2796186_



70_2796186_



71_2796186_



72_2796186_



73_2796186_



74_2796186_



75_2796186_



76_2796186_



77_2796186_



78_2796186_



79_2796186_



80_2796186_



81_2796186_



82_2796186_



83_2796186_



84_2796186_



85_2796186_



CONTACTS

Andrey Shestakov, leading yacht broker of the sales department of Shestakov Yacht Sales Inc. Shestakov Yacht Sales Inc., the official representative of the Miami/Fort Lauderdale FL headquarters.

Contact details

Email: andrey@shestakovyachtsales.com

Web: shestakovyachtsales.com/en/

Telephones

USA: +1(954)274-4435

Office hours

Monday – Saturday: **9:00 - 21:00** EDT

Sunday: **closed**

Address



Harbour Towne Marina, 850 NE 3rd St,
STE 213, Dania, FL 33004