

2014 GLASSTREAM 280 ZS — GLASSTREAM/GMI



Судостроитель: GLASSTREAM/GMI

Длина общая: 28' (8.53mm)

Год постройки: 2014

Модель: Яхты с центральной консолью

Цена: ЦЕНА ЯХТЫ ПО ЗАПРОСУ

Местонахождение: United States

Купить 2014 GLASSTREAM 280 ZS — GLASSTREAM/GMI а также выбрать подходящую вам яхту из нашего каталога яхт вам поможет опытный яхтенный брокер Андрей Шестаков. На сегодняшний день компания Shestakov Yacht Sales Inc. имеет большое количество яхт в собственном списке продаж, а также тесно сотрудничает со всеми крупными яхтенными производителями по всему миру.

Для того чтобы купить яхту 2014 GLASSTREAM 280 ZS — GLASSTREAM/GMI а также проконсультироваться по любому вопросу связанному с покупкой, продажей, чартером яхт позвоните по телефону **+7(918)465-66-44**.

ОГЛАВЛЕНИЕ

ОГЛАВЛЕНИЕ	2
ХАРАКТЕРИСТИКИ	3
Обзор	3
Основная информация	4
Размеры	5
Корпус и палуба	5
Информация о двигателе	5
ФОТОГРАФИИ	6
КОНТАКТЫ	8
Контактная информация	8
Телефоны	8
Время работы	8
Адрес	8

ХАРАКТЕРИСТИКИ

Обзор

2014 Glasstream ZS is well outfitted and in excellent condition. This craft has been well cared for, used in Lake Michigan and the gulf. Outfitted with twin 4 stroke 300 HP Suzuki engines with new Solas 15x24 pitch propellers. Cruise at 40mph with a 6.5gph burn rate, 13 combined. 6350 RPM will move the boat over 70! The fuel tank holds 135 gallons for good range.

This 280ZS was a custom build for the Miami boat show and featured in Southern boating magazine with beautiful silver and red graphics thru out. The fly by wire steering system by Seastar with Suzuki Optimus joystick. Easy docking and harbor handling with a display to show rudder position and engine information. Throttles are fly by wire too.

Out of the harbor the Garmin autopilot makes it easy to navigate and has a wireless remote for trolling or cruising. No manual trim with this boat, new Zip-Wakes, a hands-off electronic trim system will keep the boat level in pitch and roll when the boat is on plane. All the electronics including the Garmin 800 AIS are coupled via NMEA 2K to the VHF 300 radio with LED channel/volume mic controls.

Suzuki engine information is shown on the 12" touch screen Garmin 7212 as well as independent Suzuki gauges for ease monitoring.

The cockpit has state of the art upgrades for navigation day and night. Garmin HD color radar, 200/600 MHz sonar. Night vision with FLIR infrared is displayed on the Garmin MFD. LEDs forward and aft lights bring night to day when docking. An array of white and red LEDs highlights the interior for night cruising, white LED light in the bait wells, and head/storage area. 16 underwater LED blue lights at the stern of the boat. This and 2 additional Garmin underwater cameras are seen on the Garmin MFD.

The new JBL sound system boosts 2 amps with 14 speakers and 12" subwoofer below the cockpit step. Bluetooth enabled and 2 bass controls for the 2-zone system.

No bottom paint is needed with the Ultra sonic anti fouling horns installed both forward and aft to eliminate growth on the bottom of the boat. The shore power plug supply 115VAC to the marine triple output charging system that maintains 3 marine batteries. 1 for each motor and 1 for the house power with an emergency crossover switch. 3 bilge pumps, lower bilge, high water bilge and a programable micro bilge keeps the boat dry. A 50-gallon freshwater tank with wash down shower or sea water source valve. A separate aerator pump for the bait well too. The forward fish locker or storage has a through hull drain for easy cleaning.

The anchor compartment is large enough to store the removable swim platform as well as fenders and lines too. Additionally, you will find 2 forward 50W steaming lights to illuminate reflective channel markers and not blind oncoming boats.

For the fisherman 10 rod holders and power pole mounts at the stern are already installed for that option. The interior is new with cockpit seats that drop for standing. The rear bench holds 3 comfortably and has a removable backrest for fishing or easy access to the motors. The head has a drop canvas for privacy and when closed it is a forward-facing seat out front.

The forward bow pad is also removable despite its large size for sunbathing. When the weather is cold the new canvas and polycarbonate enclosure zips in easily and keeps the wind away for both the cockpit and rear seats too. When it's hot, a white UV Lycra sun shade stretches from the hard top forward to the bow providing shade. Covers for everything to protect the boat! Engines, cockpit seats, helm station, forward sun pad all the way to the bow and aft cover for the rear seating. Another full rain canvas will cover everything from the winch on the trailer to the back of the motors.

The trailer is a triple axle aluminum with aluminum mags, 4 disc brakes and LED lights. Fully loaded with gear/fuel it weighs in at 7200#s on the trailer. Extras... spare props with new hubs, life jackets, mooring lines, light bulbs, engine and fuel/water separation filters.

Основная информация

Тип судна: Яхты с центральной консолью **Подкатегория:** Яхты с центральной консолью

Модельный год: 2014

Год постройки: 2014

Страна: United States

Размеры

Длина общая: 28' (8.53mm)

Корпус и палуба

Материал корпуса: Fiberglass

Информация о двигателе

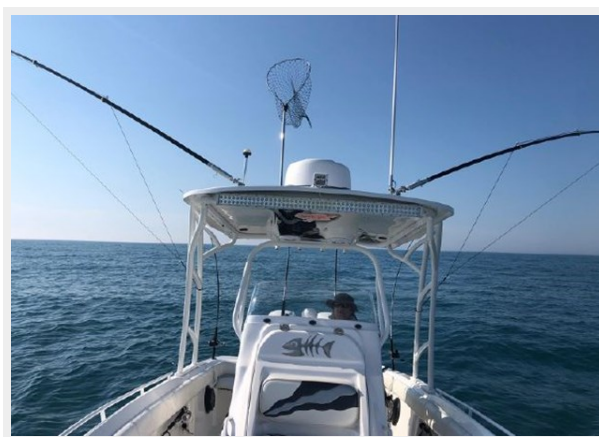
Двигатели: 1

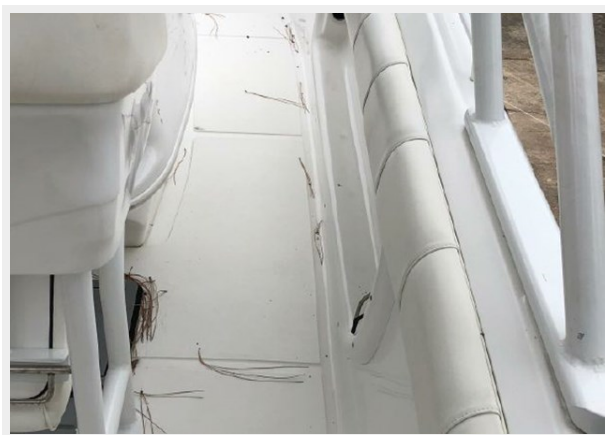
Производитель: Suzuki

ФОТОГРАФИИ



Built at the Glasstream yard in Panama City, Florida, the 280 ZS is a combination angling and pleasure center console that offers high-end performance with fishing amenities. The boat's stepped-bottom hull offers more deadrise at the transom and runs more than 70 mph when equipped with twin Suzuki DF300AP 300-horsepower engines. Power options range from the big Suzuki engines down to smaller 150-hp outboards, which still offer good performance and provide the safety of twin engines. Measuring 27-feet, 8-inch long, the Glasstream 280 ZS on display at the 2014 Miami International Boat Show was rigged with Suzuki Precision Maneuvering that allows the driver to dock with ease through joystick control.





КОНТАКТЫ

Андрей Шестаков (Andrey Shestakov) – ведущий яхтенный брокер отдела продаж яхт и судов компании Shestakov Yacht Sales Inc. Официальный представитель Shestakov Yacht Sales Inc. для русскоговорящих клиентов в центральном офисе компании в Майами/Форт Лодердейл/Флорида/США.

Контактная информация

Email: andrey@shestakovyachtsales.com

Web: shestakovyachtsales.com

Телефоны

Краснодарский край: **+7(918)465-66-44**

США, Майами, Флорида: **+1(954)274-4435**

Время работы

Понедельник – Суббота: **9:00 - 21:00**
EDT

Воскресенье: **Закрето**

Адрес



Harbour Towne Marina, 850 NE 3rd St,
STE 213, Dania, FL 33004