

HINCKLEY TALARIA 29R — HINCKLEY



Builder: HINCKLEY

Year Built: 2011

Model: tender

Price: PRICE ON APPLICATION

Location: France

LOA: 29' 3" (8.89m)

Beam: 9.02

Max Draft: 1' 7" (0.46m)

Cruise Speed: 29 Knots Kts. (33 MPH)

Max Speed: 33 Knots Kts. (38 MPH)

Our experienced yacht broker, Andrey Shestakov, will help you choose and buy a yacht that best suits your needs **Hinckley Talaria 29R — HINCKLEY** from our catalogue. Presently, at Shestakov Yacht Sales Inc., we have a wide variety of yachts available on our sale's list. We also work in close contact with all the big yacht manufacturers from all over the world.

If you would like to buy a yacht **Hinckley Talaria 29R — HINCKLEY** or would like help answering any questions concerning purchasing, selling or chartering a yacht, please call **+1(954)274-4435**

TABLE OF CONTENTS

TABLE OF CONTENTS	2
SPECIFICATIONS	3
Overview	3
Basic Information	3
Dimensions	3
Speed, Capacities and Weight	4
Accommodations	4
Hull and Deck Information	4
Engine Information	4
PHOTOS	5
CONTACTS	10
Contact details	10
Telephones	10
Office hours	10
Address	10

SPECIFICATIONS

Overview

A unique opportunity to purchase an impeccably maintained example of Hinckley's timeless and elegant Talaria 29 Runabout, featuring a traditional Flag Blue Awlgrip hull and light cream Awlgrip deck. She was built and solely used as a tender for a larger yacht. When not in use, she spent her life out of the water in a tender garage. Maintained by the yacht's engineers and deck crew. She's received all the love she ever needed.

Key features: - The only Hinckley Talaria 29R for sale in Europe.- One Owner.- Professionally maintained by a fastidious Superyacht Owner with no expense spared.- Vast majority of engine hour done at relatively low speed ferrying guests to and from shore or on stand-by.- Stored out of the water when not in use.- 3-point lift points and Ski Towing eye.- Volvo D-6 435hp with Hamilton Jet drive- Cockpit table and Teak decks.- Furuno Navigation Package incl. 12" NavNet 3D Display.- Removable radar mast.- Full boat cover.- 220VAC/50CYL electrical configuration.- Jet Stick 360' Manoeuvring control.- Full list of spares available on request.

Basic Information

Category: tender

Sub Category: Tender

Model Year: 2011

Year Built: 2011

Country: France

Dimensions

LOA: 29' 3" (8.89mm)

LWL: 26' 9" (8.13mm)

Beam: 9.02

Max Draft: 1' 7" (0.46mm)

Speed, Capacities and Weight

Cruise Speed: 29 Knots Kts. (33 MPH)

Max Speed: 33 Knots Kts. (38 MPH)

Water Capacity: 75 Gallons

Holding Tank: 9.77 Gal Gallons

Fuel Capacity: 99.86 Gal Gallons

Accommodations

Total Cabins: 1

Total Berths: 1

Sleeps: 2

Total Heads: 1

Hull and Deck Information

Hull Material: Composite

Deck Material: Teak

Hull Color: Flag Blu

Hull Designer: Hinckley Yacht Services

Exterior Designer: Hinckley Yacht Services

Engine Information

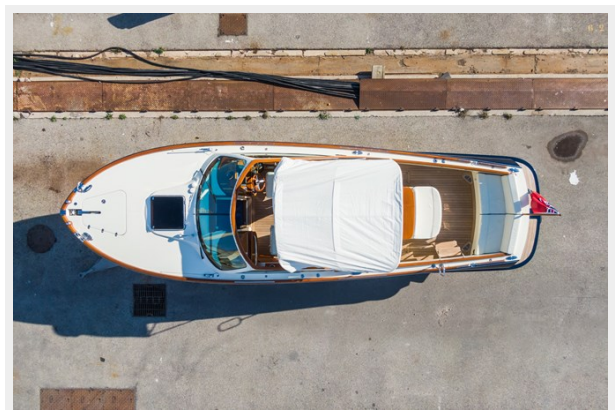
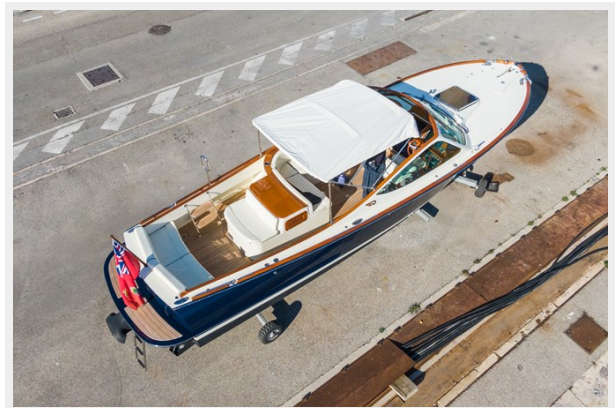
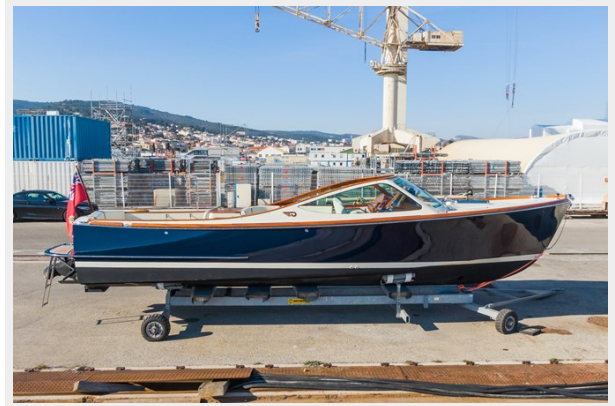
Engines: 1

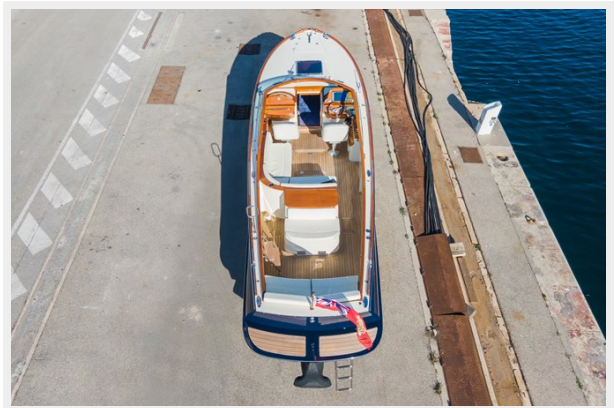
Manufacturer: Volvo Penta

Engine Type: Inboard

Fuel Type: Diesel

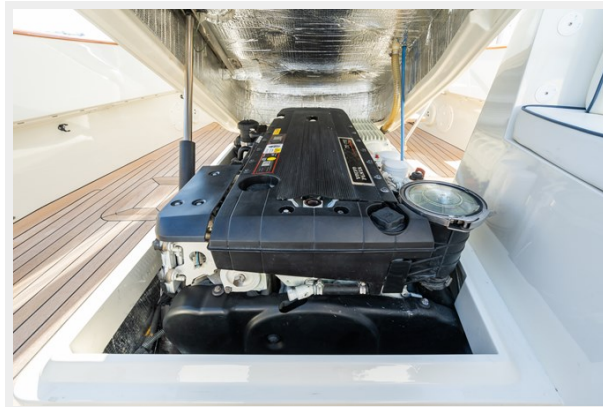
PHOTOS











CONTACTS

Andrey Shestakov, leading yacht broker of the sales department of Shestakov Yacht Sales Inc. Shestakov Yacht Sales Inc., the official representative of the Miami/Fort Lauderdale FL headquarters.

Contact details

Email: andrey@shestakovyachtsales.com

Web: shestakovyachtsales.com/en/

Telephones

USA: +1(954)274-4435

Office hours

Monday – Saturday: **9:00 - 21:00** EDT

Sunday: **closed**

Address



Harbour Towne Marina, 850 NE 3rd St,
STE 213, Dania, FL 33004