

MORNING STAR II — CARVER



Builder: CARVER

Year Built: 2000

Model: Motor Yacht

Price: PRICE ON APPLICATION

Location: United States

LOA: 45' (13.72mm)

Beam: 14.91

Max Draft: 3' 7" (1.09mm)

Cruise Speed: 18 Knots Kts. (21 MPH)

Max Speed: 21 Knots Kts. (24 MPH)

Our experienced yacht broker, Andrey Shestakov, will help you choose and buy a yacht that best suits your needs **Morning Star II — CARVER** from our catalogue. Presently, at Shestakov Yacht Sales Inc., we have a wide variety of yachts available on our sale's list. We also work in close contact with all the big yacht manufacturers from all over the world.

If you would like to buy a yacht **Morning Star II — CARVER** or would like help answering any questions concerning purchasing, selling or chartering a yacht, please call **+1(954)274-4435**

TABLE OF CONTENTS

TABLE OF CONTENTS	2
SPECIFICATIONS	6
Overview	6
Basic Information	6
Dimensions	6
Speed, Capacities and Weight	6
Accommodations	7
Hull and Deck Information	7
Engine Information	7
PHOTOS	8
2_2795950_port_bow_profile	8
1_2795950_starboard_profile	8
4_2795950_starboard_bow_profile	8
3_2795950_bow_profile	8
5_2795950_starboard_stern_profile	8
6_2795950_stern_profile	8
7_2795950_cockpit_forward	9
8_2795950_cockpit_port	9
9_2795950_cockpit_starboard	9
10_2795950_salon_forward	9
11_2795950_salon_port	9
12_2795950_salon_starboard	9
13_2795950_salon_aft	9
14_2795950_lower_helm_forward	9
15_2795950_lower_helm	10
16_2795950_lower_helm_port	10
17_2795950_lower_helm_starboard	10
18_2795950_galley_forward	10

20_2795950_galley_aft	10
19_2795950_galley_port	10
21_2795950_master_stateroom_aft	11
22_2795950_master_stateroom_port	11
24_2795950_master_head_toilet_and_vanity	11
23_2795950_master_stateroom_starboard	11
25_2795950_master_head_vanity_and_shower	11
26_2795950_vip_stateroom_forward	11
27_2795950_vip_stateroom_port	12
28_2795950_vip_stateroom_starboard	12
29_2795950_guest_head_toilet_and_vanity	12
30_2795950_guest_head_vanity_and_shower	12
31_2795950_flybridge_forward	12
32_2795950_flybridge_helm	12
33_2795950_flybridge_port	13
34_2795950_flybridge_starboard	13
35_2795950_flybridge_aft	13
36_2795950_engine_room_access	13
37_2795950_engine_room_forward	13
38_2795950_engine_room_port	13
39_2795950_engine_room_starboard	13
40_2795950_engine_room_aft	13
41_2795950_port_main_engine_forward	14
42_2795950_port_main_engine_aft	14
43_2795950_starboard_main_engine_forward	14
44_2795950_starboard_main_engine_aft	14
45_2795950_fuel_filter	14
46_2795950_dripless_shaft_seal	14
47_2795950_fire_suppression_system	15

48_2795950_water_heater	15
49_2795950_central_vac	15
50_2795950_generator	15
51_2795950_battery_charger	15
52_2795950_charger_inverter	15
53_2795950_bow_thruster_battery_charger	16
54_2795950_port_main_start_battery	16
56_2795950_generator_battery	16
55_2795950_starboard_main_start_battery	16
57_2795950_house_battery_1	16
58_2795950_house_battery_2	16
60_2795950_electrical_panel	17
59_2795950_bow_thruster_battery_bank	17
61_2795950_auxiliary_electrical_panel	17
62_2795950_tender	17
63_2795950_outboard	17
64_2795950_davit	17
65_2795950_fore_deck_forward	18
66_2795950_fore_deck_port	18
67_2795950_fore_deck_starboard	18
68_2795950_fore_deck_aft	18
69_2795950_bow_pulpit	18
70_2795950_windlass	18
72_2795950_anchor_rod	18
71_2795950_anchor	18
73_2795950_port_sidewalk	19
74_2795950_starboard_sidewalk	19
75_2795950_kvh_dome	19
76_2795950_magma_grill	19

CONTACTS	20
-----	-----
Contact details	20
-----	-----
Telephones	20
-----	-----
Office hours	20
-----	-----
Address	20
-----	-----

SPECIFICATIONS

Overview

Morning Star II is a popular Carver 450 Voyager pilothouse motor yacht. With her two spacious queen berth staterooms layout and two full heads with separate shower stalls, her accommodations are very comfortable. Her helms are well designed and equipped and provide a great view for navigating. The starboard side raised pilothouse helm is accompanied by a large almost full C-shaped settee with easy access to the salon. The flybridge helm has a large L-shaped settee to port, a smaller settee to starboard, a dinning table and a wet bar for relaxing and entertaining. The aft flybridge deck provides easy access to the davit and tender storage. The wrap around galley adjacent to the lower helm has a large amount of storage and counter space and is open to the salon. The spacious salon is full beam and has a large sliding glass door for access to the cockpit and swim platform. She is well powered with twin Cummins 370 HP diesel engines and a 13.5 KW generator to power her electrical needs. This motor yacht is a Great Loop veteran.

Basic Information

Category: Motor Yacht

Model Year: 2000

Year Built: 2000

Country: United States

Dimensions

LOA: 45' (13.72mm)

Beam: 14.91

Max Draft: 3' 7" (1.09mm)

Speed, Capacities and Weight

Cruise Speed: 18 Knots Kts. (21 MPH)

Max Speed: 21 Knots Kts. (24 MPH)

Water Capacity: 150 Gallons

Holding Tank: 80 Gal Gallons

Fuel Capacity: 560 Gal Gallons

Accommodations

Total Cabins: 2

Total Heads: 2

Hull and Deck Information

Hull Material: Fiberglass

Engine Information

Engines: 2

Manufacturer: Cummins

Engine Type: Inboard

Fuel Type: Diesel

PHOTOS

1_2795950_starboard_profile



2_2795950_port_bow_profile



3_2795950_bow_profile



4_2795950_starboard_bow_profile



5_2795950_starboard_stern_profile



6_2795950_stern_profile



7_2795950_cockpit_forward



8_2795950_cockpit_port



9_2795950_cockpit_starboard



10_2795950_salon_forward



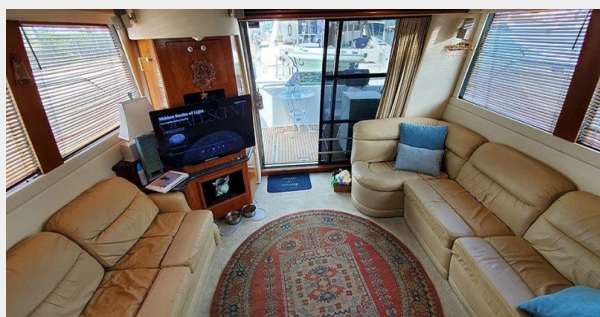
11_2795950_salon_port



12_2795950_salon_starboard



13_2795950_salon_aft



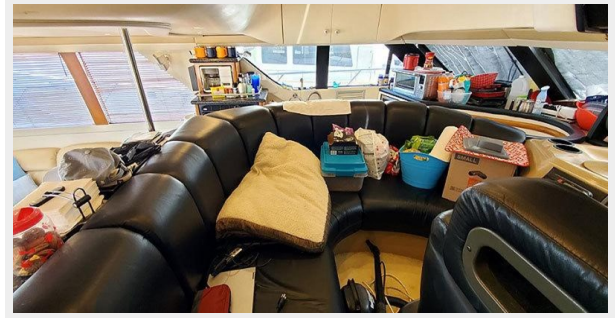
14_2795950_lower_helm_forward



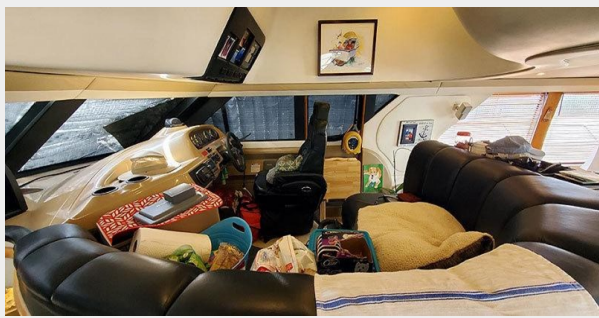
15_2795950_lower_helm



16_2795950_lower_helm_port



17_2795950_lower_helm_starboard



18_2795950_galley_forward



19_2795950_galley_port



20_2795950_galley_aft



21_2795950_master_stateroom_aft



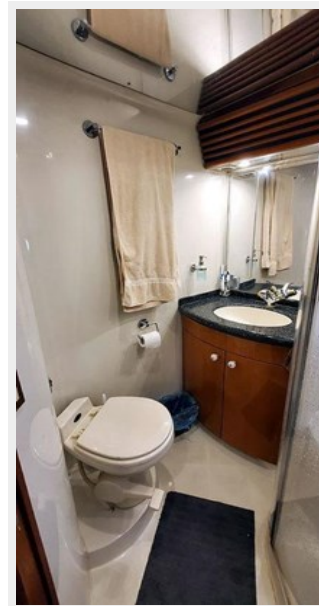
22_2795950_master_stateroom_port



23_2795950_master_stateroom_starboard



24_2795950_master_head_toilet_and_vanity



25_2795950_master_head_vanity_and_shower



26_2795950_vip_stateroom_forward



27_2795950_vip_stateroom_port



28_2795950_vip_stateroom_starboard



29_2795950_guest_head_toilet_and_vanity 30_2795950_guest_head_vanity_and_shower



31_2795950_flybridge_forward



32_2795950_flybridge_helm



33_2795950_flybridge_port



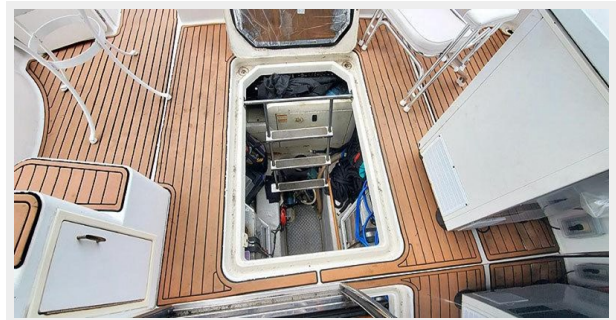
34_2795950_flybridge_starboard



35_2795950_flybridge_aft



36_2795950_engine_room_access



37_2795950_engine_room_forward



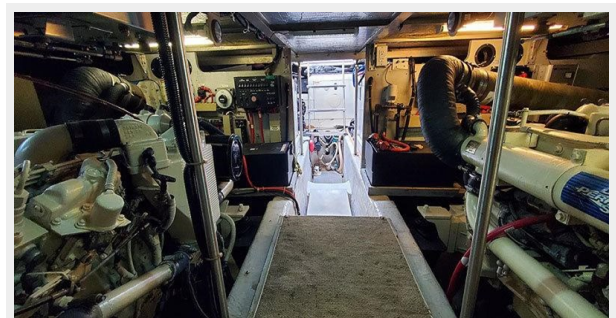
38_2795950_engine_room_port



39_2795950_engine_room_starboard



40_2795950_engine_room_aft



41_2795950_port_main_engine_forward



42_2795950_port_main_engine_aft



43_2795950_starboard_main_engine_forward



44_2795950_starboard_main_engine_aft



45_2795950_fuel_filter



46_2795950_dripleless_shaft_seal



47_2795950_fire_suppression_system



48_2795950_water_heater



49_2795950_central_vac



50_2795950_generator



51_2795950_battery_charger



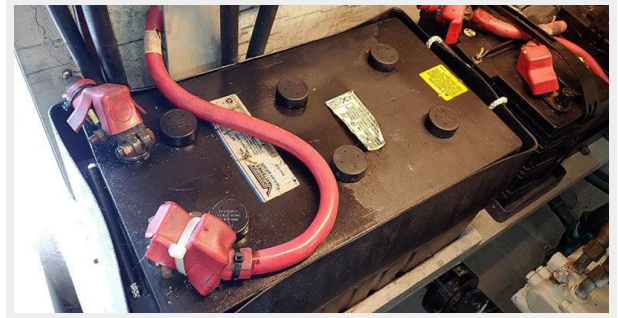
52_2795950_charger_inverter



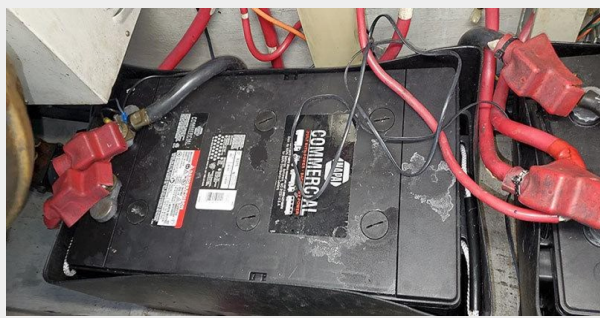
53_2795950_bow_thruster_battery_charger



54_2795950_port_main_start_battery



55_2795950_starboard_main_start_battery



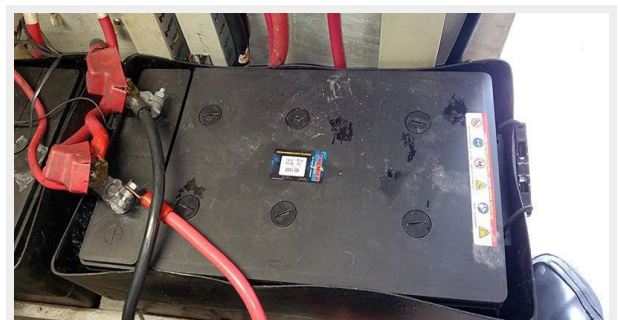
56_2795950_generator_battery



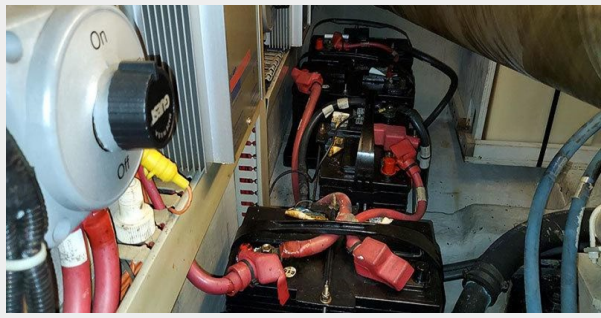
57_2795950_house_battery_1



58_2795950_house_battery_2



59_2795950_bow_thruster_battery_bank



60_2795950_electrical_panel



61_2795950_auxiliary_electrical_panel



62_2795950_tender



63_2795950_outboard



64_2795950_davit



65_2795950_fore_deck_forward



66_2795950_fore_deck_port



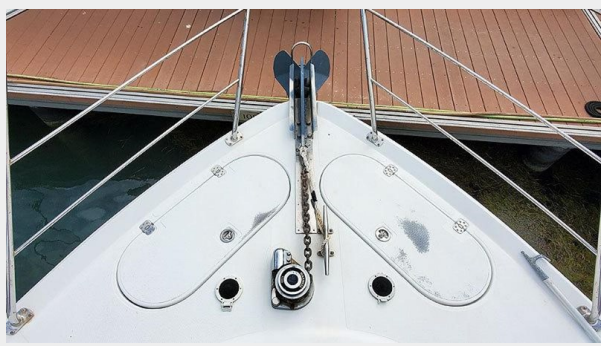
67_2795950_fore_deck_starboard



68_2795950_fore_deck_aft



69_2795950_bow_pulpit



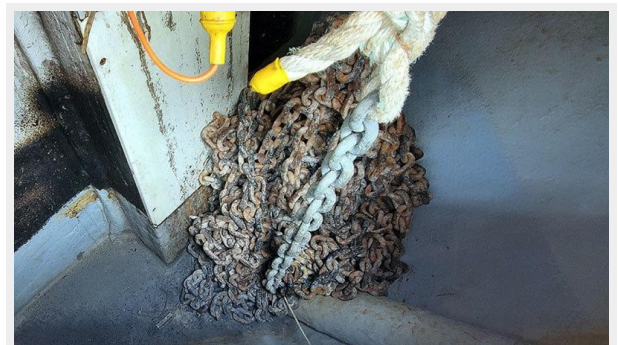
70_2795950_windlass



71_2795950_anchor



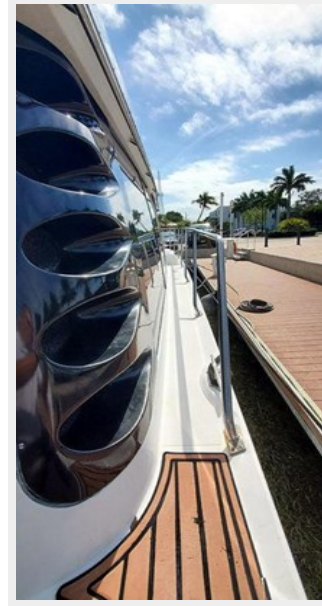
72_2795950_anchor_rod



73_2795950_port_sidewalk



74_2795950_starboard_sidewalk



75_2795950_kvh_dome



76_2795950_magma_grill



CONTACTS

Andrey Shestakov, leading yacht broker of the sales department of Shestakov Yacht Sales Inc. Shestakov Yacht Sales Inc., the official representative of the Miami/Fort Lauderdale FL headquarters.

Contact details

Email: andrey@shestakovyachtsales.com

Web: shestakovyachtsales.com/en/

Telephones

USA: +1(954)274-4435

Office hours

Monday – Saturday: **9:00 - 21:00** EDT

Sunday: **closed**

Address



Harbour Towne Marina, 850 NE 3rd St,
STE 213, Dania, FL 33004