

# PRINCESS FLYBRIDGE 56 MOTOR YACHT — PRINCESS YACHTS



**Builder:** PRINCESS YACHTS

**Year Built:** 2015

**Model:** Motor Yacht

**Price:** \$1,400,000 USD

**Location:** United States

**LOA:** 59' 5" (18.11mm)

**Beam:** 15.58

**Min Draft:** 4' 3" (1.3mm)

**Cruise Speed:** 26 Knots Kts. (30 MPH)

Our experienced yacht broker, Andrey Shestakov, will help you choose and buy a yacht that best suits your needs **Princess Flybridge 56 Motor Yacht — PRINCESS YACHTS** from our catalogue. Presently, at Shestakov Yacht Sales Inc., we have a wide variety of yachts available on our sale's list. We also work in close contact with all the big yacht manufacturers from all over the world.

If you would like to buy a yacht **Princess Flybridge 56 Motor Yacht — PRINCESS YACHTS** or would like help answering any questions concerning purchasing, selling or chartering a yacht, please call **+1(954)274-4435**

# TABLE OF CONTENTS

TABLE OF CONTENTS	2
SPECIFICATIONS	4
Overview	4
Basic Information	7
Dimensions	8
Speed, Capacities and Weight	8
Accommodations	8
Hull and Deck Information	8
Engine Information	8
PHOTOS	9
p1	9
p2	9
p3	9
p4	9
p6	10
p5	10
p7	10
p8	10
p9	11
p10	11
p11	11
p12	11
p13	11
p14	11
p15	12
p16	12
p17	12
p18	12

p19	12
CONTACTS	13
Contact details	13
Telephones	13
Office hours	13
Address	13

# SPECIFICATIONS

---

## Overview

---

Teak-laid steps lead up from the bathing platform to the expansive cockpit, with its dining table and generous u-shaped seating. You and your guests can also enjoy socialising and relaxing on the spacious flybridge, where further seating surrounds a second alfresco table. And for those who really want to unwind, the helm companion seat can easily be converted into a sunbed.

The stylish main saloon is bright and airy with large wraparound windows, creating an exceptional feeling of space. The open-plan arrangement, featuring u-shaped seating, separate raised dining area and well-equipped galley, ensures a highly sociable layout. The lower accommodation comprises three beautifully appointed cabins, including the luxurious full beam master stateroom, a spacious forward guest cabin, both with generous en-suites, and a twin cabin. You can also specify an optional single aft cabin with its own WC, for crew or occasional guests if required.

### Deck

- Teak-laid transom platform, cockpit deck, flybridge stairway and stairs to side decks
- Reversible electric anchor winch with foredeck, main helm and flybridge controls
- Self stowing 25kg/55lb Delta anchor with 40m of chain
- Stemhead roller with automatic anchor launch and retrieve
- Stainless-steel bow, stern and spring cleats
- Stainless-steel bow fairleads
- Stainless-steel pulpit and guard rails
- Stainless-steel coachroof and flybridge rails
- PVC rubbing band with stainless-steel insert
- Foredeck hatch
- Full set of IMCO navigation lights
- Riding light
- Twin beam searchlight with dual-station remote controls
- Twin electric horns
- Fuel and water fillers

### Cockpit

- Self-draining
- U-shaped seating with teak table
- Lockable access hatch to engine room and lazarette
- Steps to side decks
- Cockpit lighting
- Transom gate leading to bathing platform
- Side lockers
- Fender storage

- 220/240v shore support inlet
- Stainless-steel handrails
- Locker containing remote fuel cocks, manual bilge pump with valve chest and manual controls for automatic fire extinguishers
- Integral stairway to flybridge with teak treads
- Teak-laid transom bathing platform with foldaway swimming ladder, hot and cold shower
- Dinghy chock system
- Electro-hydraulic raise/lower mechanism for transom platform (suitable for a tender up to 400kgs) is optionally available

## Accommodations

### Deck Saloon

- Triple stainless-steel framed sliding doors to cockpit
- U-shaped sofa with coffee table
- Two-seater sofa to port
- 46" LED TV with electric raise/lower mechanism
- Sideboard units with refrigerator, bottle and glass storage and radio/MP3
- Dining area with U-shaped seating and 2 additional stools (to seat 6 in total)

### OWNER'S STATEROOM

- Large double bed with drawers below
- Wardrobe with shelves
- Dressing table
- Sofa
- Stereo radio, MP3
- Overhead and individual berth lights
- En suite bathroom

### FORWARD GUEST CABIN

- Large double bed with drawers below
- Wardrobe with shelves
- Vanity unit
- Storage lockers and drawers
- Overhead and individual berth lights
- Deck hatch with fly screen and blind
- En suite bathroom with day access

### STARBOARD GUEST CABIN

- Two full-size single beds
- Wardrobe with shelf
- Storage lockers

- Overhead and individual berth lights

## OPTIONAL AFT CABIN

- Single berth
- Storage space
- Overhead and individual berth lights
- Electric quietflush toilet and washbasin

## Galley

- 3-zone ceramic hob
- Hob extractor
- Combination microwave/conventional oven with grill
- Stainless-steel sink with monobloc mixer tap
- Refrigerator with freezer compartment
- Waste bin
- Chopping board
- Provision for dishwasher and additional refrigerator

## Power and Drive Systems

- 4-bladed Veem Interceptor propellers
- Bow thruster
- Stern thruster
- Power-assisted electro-hydraulic steering system with hydraulic back-up
- Electronic engine and gear shift controls
- Dripless shaft seals
- Engine room extractor fan with electronic time delay

## Electrical

### 24 Volt

- 4 x heavy duty batteries for engine starting
- 4 x heavy duty auxiliary batteries
- 60 amp battery charger charges both banks of batteries via an automatic switch charging system
- Remote battery master switches with control switch at main panel
- LED lighting throughout

### 220/240 Volt

- 13.5kW Onan diesel generator in own sound shield with water cooled specially silenced exhaust
- Polarity check system
- Earth leakage safety trip

- Power points in all areas

### Flybridge

- Dual station instrument controls (see Lower Helm Position)
- Visible and audible engine warning system
- Bilge pump audible alarm
- Twin helm seats
- Forward facing L-shaped seat which converts to sunbed
- U-shaped seating area with teak table
- Wetbar with sink and electric barbecue
- Refrigerated coolbox
- Loudspeakers linked to saloon stereo
- Integral stairway from aft cockpit with clear view hatch
- Wind deflector screen
- Stainless-steel handrails
- GRP radar arch
- Console and seat covers
- Matched whip aerials for VHF R/T and radio

### Lower Helm Position

- Twin helm seats with fore and aft adjustment for helmsman
- Electric opening windows at helm position and port side
- Full engine instrumentation including fuel gauges, exhaust temperature and engine warning system and rudder position indicator
- Navigation system including VHF/RT, speed and distance log, echo sounder with alarm, autopilot and high speed magnetic compass
- Controls for bow thruster, windscreen wipers, bilge pump and trim tabs (with indicator)
- Chart table with light and chart stowage
- 12v outlet
- Red night lighting
- 24v and 220/240v electrical control panels

## Basic Information

**Category:** Motor Yacht

**Model Year:** 2015

**Year Built:** 2015

**Country:** United States

## Dimensions

---

**LOA:** 59' 5" (18.11mm)

**Beam:** 15.58

**Min Draft:** 4' 3" (1.3mm)

## Speed, Capacities and Weight

---

**Cruise Speed:** 26 Knots Kts. (30 MPH)

**Water Capacity:** 130 Gallons

**Fuel Capacity:** 582 Gal Gallons

## Accommodations

---

**Total Cabins:** 3

## Hull and Deck Information

---

**Hull Material:** Fiberglass

## Engine Information

---

**Engines:** 2

**Manufacturer:** MAN

**Engine Type:** Inboard

**Fuel Type:** Diesel



# PHOTOS

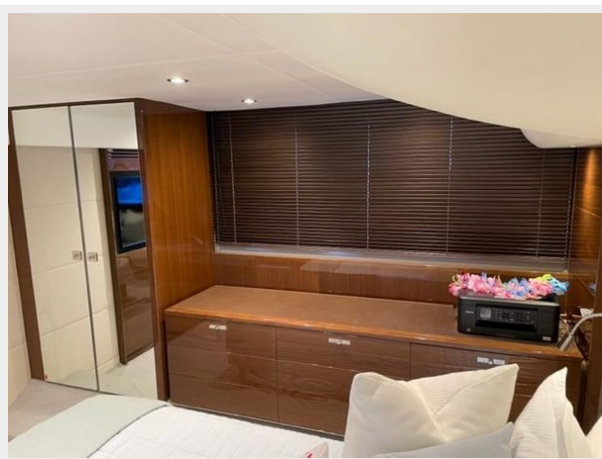
p1



p2



p3



p4



p5



p6



p7



p8





p9



p10



p11



p12



p13



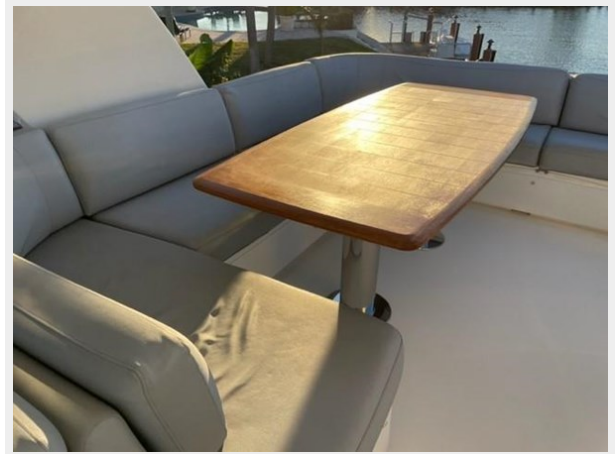
p14



p15



p16



p17



p18



p19





# CONTACTS

---

Andrey Shestakov, leading yacht broker of the sales department of Shestakov Yacht Sales Inc. Shestakov Yacht Sales Inc., the official representative of the Miami/Fort Lauderdale FL headquarters.

## Contact details

---

Email: **andrey@shestakovyachtsales.com**

Web: [shestakovyachtsales.com/en/](http://shestakovyachtsales.com/en/)

## Telephones

---

USA: **+1(954)274-4435**

## Office hours

---

Monday – Saturday: **9:00 - 21:00 EDT**

Sunday: **closed**

## Address

---



Harbour Towne Marina, 850 NE 3rd St,  
STE 213, Dania, FL 33004