

STORMY DANIELS II — SEA RAY



Builder: SEA RAY

Year Built: 2001

Model: Motor Yacht

Price: PRICE ON APPLICATION

Location: United States

LOA: 34' (10.36m)

Beam: 11.41

Max Draft: 3' (0.91m)

Cruise Speed: 26 Knots Kts. (30 MPH)

Max Speed: 32 Knots Kts. (37 MPH)

Our experienced yacht broker, Andrey Shestakov, will help you choose and buy a yacht that best suits your needs **Stormy Daniels II — SEA RAY** from our catalogue. Presently, at Shestakov Yacht Sales Inc., we have a wide variety of yachts available on our sale's list. We also work in close contact with all the big yacht manufacturers from all over the world.

If you would like to buy a yacht **Stormy Daniels II — SEA RAY** or would like help answering any questions concerning purchasing, selling or chartering a yacht, please call **+1(954)274-4435**

TABLE OF CONTENTS

| | |
|---------------------------------------|----|
| TABLE OF CONTENTS | 2 |
| SPECIFICATIONS | 6 |
| Overview | 6 |
| Basic Information | 6 |
| Dimensions | 6 |
| Speed, Capacities and Weight | 6 |
| Accommodations | 6 |
| Hull and Deck Information | 6 |
| Engine Information | 7 |
| PHOTOS | 8 |
| 0_2796247_340_port_profile_cover_page | 8 |
| 1_2796247_340_aft_port_profile | 8 |
| 2_2796247_340_stbd_aft_profile | 8 |
| 3_2796247_340_port_profile | 8 |
| 4_2796247_340_aft_entry | 9 |
| 5_2796247_340_swim_platform | 9 |
| 6_2796247_340_cockpit_floor | 9 |
| 7_2796247_340_cockpit_seating | 9 |
| 8_2796247_340_cockpit_aft | 10 |
| 9_2796247_340_flooring | 10 |
| 10_2796247_340_helm_seats | 10 |
| 11_2796247_340_speaker | 10 |
| 12_2796247_340_subwoofer | 11 |
| 13_2796247_340_helm_area | 11 |
| 15_2796247_340_captain_seat | 11 |
| 14_2796247_340_cockpit_aft | 11 |
| 16_2796247_340_cockpit_receptacle | 12 |
| 17_2796247_340_trim_tabs | 12 |

| | |
|---------------------------------------|----|
| 18_2796247_340_fusion_remote | 12 |
| 19_2796247_340_vhf | 12 |
| 20_2796247_340_chartplotter | 13 |
| 21_2796247_340_spotlight | 13 |
| 22_2796247_340_under_helm | 13 |
| 23_2796247_340_instrumentation | 13 |
| 24_2796247_340_new_gauges | 14 |
| 25_2796247_340_helm | 14 |
| 27_2796247_340_counter_upgrade | 14 |
| 28_2796247_340_trash_bin | 14 |
| 29_2796247_340_cockpit_lockers | 15 |
| 30_2796247_340_trash_bin | 15 |
| 31_2796247_340_cockpit_fridge | 15 |
| 32_2796247_340_new_fridge | 15 |
| 33_2796247_340_stbd_locker | 16 |
| 34_2796247_340_custom_drink_holder | 16 |
| 35_2796247_340_custom_sink | 16 |
| 36_2796247_340_fwd_view | 16 |
| 37_2796247_340_salon_door | 17 |
| 38_2796247_340_custom_steps | 17 |
| 39_2796247_340_stair_entry | 17 |
| 40_2796247_340_teak_and_holly_upgrade | 17 |
| 41_2796247_340_floor_upgrade | 18 |
| 42_2796247_340_dinette | 18 |
| 43_2796247_340_stbd_storage | 18 |
| 44_2796247_340_galley_upper | 18 |
| 45_2796247_340_galley_counter | 19 |
| 46_2796247_340_galley_lower | 19 |
| 47_2796247_340_galley_sink_area | 19 |

| | |
|--|----|
| 48_2796247_340_salon_flatscreen | 19 |
| 50_2796247_340_stove | 20 |
| 49_2796247_340_flatscreen_upgrade | 20 |
| 51_2796247_340_salon_aft | 20 |
| 52_2796247_340_salon_aft_seating | 20 |
| 53_2796247_340_aft_storage | 21 |
| 54_2796247_340_aft_seating_area | 21 |
| 55_2796247_340_aft_port_seating | 21 |
| 56_2796247_340_island_berth | 21 |
| 57_2796247_340_fwd_berth_seating | 22 |
| 58_2796247_340_fwd_berth_hanging_locker_stbd | 22 |
| 59_2796247_340_fwd_berth_privacy_curtain | 22 |
| 60_2796247_340_salon_looking_fwd | 22 |
| 61_2796247_340_bathroom | 23 |
| 62_2796247_340_bathroom_sink | 23 |
| 63_2796247_340_bathroom | 23 |
| 64_2796247_340_circuit_breaker_panel | 23 |
| 65_2796247_340_fusion_amp | 24 |
| 66_2796247_340_acheat_unit | 24 |
| 67_2796247_340_genset | 24 |
| 68_2796247_340_port_engine | 24 |
| 69_2796247_340_vacuflush | 25 |
| 70_2796247_340_stbd_engine | 25 |
| 71_2796247_340_engine_room | 25 |
| 72_2796247_340_engine | 25 |
| 73_2796247_340_stbdfwd | 26 |
| 74_2796247_340_stbd_mid | 26 |
| 75_2796247_340_stbd_aft | 26 |
| 76_2796247_340_stbd_running_gear | 26 |

| | |
|----------------------------------|----|
| 77_2796247_340_stbd_aft | 27 |
| 78_2796247_340_port_aft | 27 |
| 79_2796247_340_port_aft_corner | 27 |
| 80_2796247_340_port_running_gear | 27 |
| 81_2796247_340_port_mid | 28 |
| 82_2796247_340_port_mid_fwd | 28 |
| 83_2796247_340_port_fwd | 28 |
| CONTACTS | 29 |
| Contact details | 29 |
| Telephones | 29 |
| Office hours | 29 |
| Address | 29 |

SPECIFICATIONS

Overview

This 340 Sundancer went through a major refit from 2011-present day. The salon, the cockpit, the instrumentation, the electronics, the canvas, the list goes on. All available for review. This 340 has been cared for and it shows.

Basic Information

Category: Motor Yacht

Model Year: 2001

Year Built: 2001

Country: United States

Dimensions

LOA: 34' (10.36mm)

Beam: 11.41

Max Draft: 3' (0.91mm)

Speed, Capacities and Weight

Cruise Speed: 26 Knots Kts. (30 MPH)

Max Speed: 32 Knots Kts. (37 MPH)

Water Capacity: 40 Gallons

Holding Tank: 28 Gal Gallons

Fuel Capacity: 225 Gal Gallons

Accommodations

Total Cabins: 1

Total Heads: 1

Hull and Deck Information

Hull Material: Fiberglass

Engine Information

Engines: 2

Manufacturer: Mercruiser

Engine Type: Inboard

Fuel Type: Gas/Petrol

PHOTOS

0_2796247_340_port_profile_cover_page



1_2796247_340_aft_port_profile



2_2796247_340_stbd_aft_profile



3_2796247_340_port_profile



4_2796247_340_aft_entry



5_2796247_340_swim_platform



6_2796247_340_cockpit_floor



7_2796247_340_cockpit_seating



8_2796247_340_cockpit_aft



9_2796247_340_flooring



10_2796247_340_helm_seats



11_2796247_340_speaker



12_2796247_340_subwoofer



13_2796247_340_helm_area



15_2796247_340_captain_seat



14_2796247_340_cockpit_aft



16_2796247_340_cockpit_receptacle



17_2796247_340_trim_tabs



18_2796247_340_fusion_remote



19_2796247_340_vhf



20_2796247_340_chartplotter



21_2796247_340_spotlight



22_2796247_340_under_helm



23_2796247_340_instrumentation



24_2796247_340_new_gauges



25_2796247_340_helm



27_2796247_340_counter_upgrade



28_2796247_340_trash_bin



29_2796247_340_cockpit_lockers



30_2796247_340_trash_bin



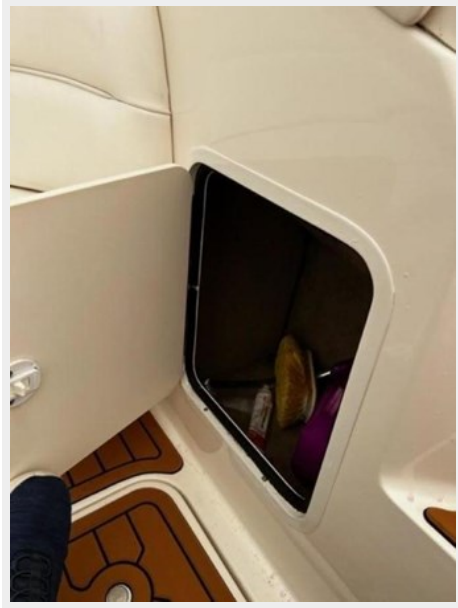
31_2796247_340_cockpit_fridge



32_2796247_340_new_fridge



33_2796247_340_stbd_locker



34_2796247_340_custom_drink_holder



35_2796247_340_custom_sink



36_2796247_340_fwd_view



37_2796247_340_salon_door



38_2796247_340_custom_steps



39_2796247_340_stair_entry



40_2796247_340_teak_and_holly_upgrade



41_2796247_340_floor_upgrade



42_2796247_340_dinette



43_2796247_340_stbd_storage



44_2796247_340_galley_upper



45_2796247_340_galley_counter



46_2796247_340_galley_lower



47_2796247_340_galley_sink_area



48_2796247_340_salon_flatscreen



49_2796247_340_flatscreen_upgrade



50_2796247_340_stove



51_2796247_340_salon_aft



52_2796247_340_salon_aft_seating



53_2796247_340_aft_storage



54_2796247_340_aft_seating_area



55_2796247_340_aft_port_seating



56_2796247_340_island_berth



57_2796247_340_fwd_berth_seating 58_2796247_340_fwd_berth_hanging_locker_stbd



59_2796247_340_fwd_berth_privacy_curtain



60_2796247_340_salon_looking_fwd



61_2796247_340_bathroom



62_2796247_340_bathroom_sink



63_2796247_340_bathroom



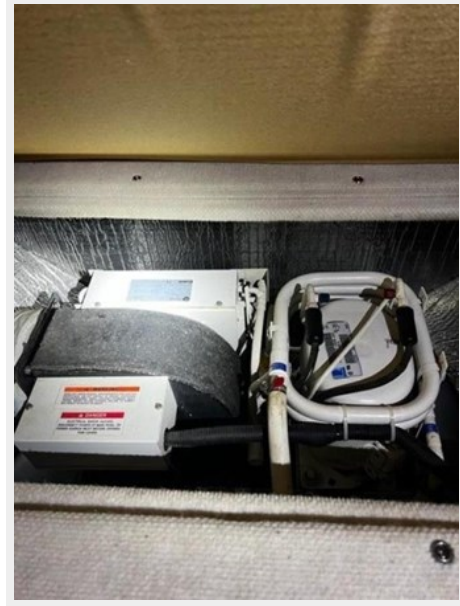
64_2796247_340_circuit_breaker_panel



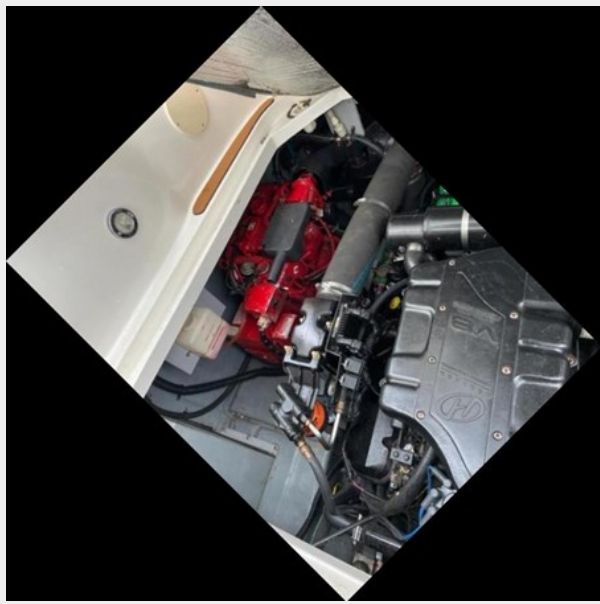
65_2796247_340_fusion_amp



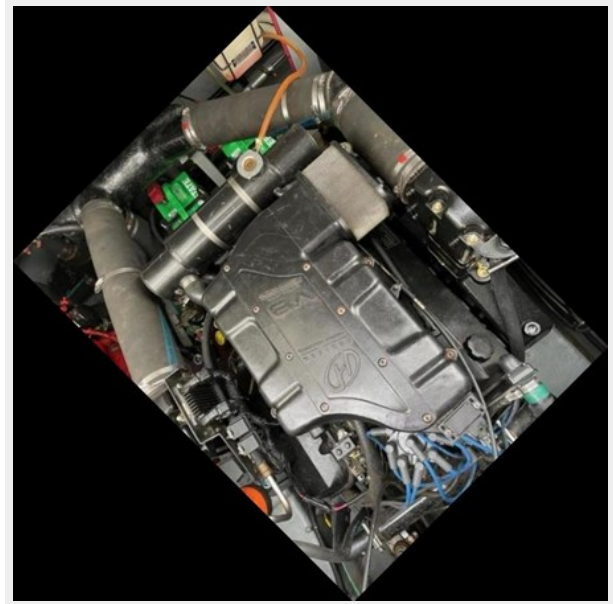
66_2796247_340_acheat_unit



67_2796247_340_genset



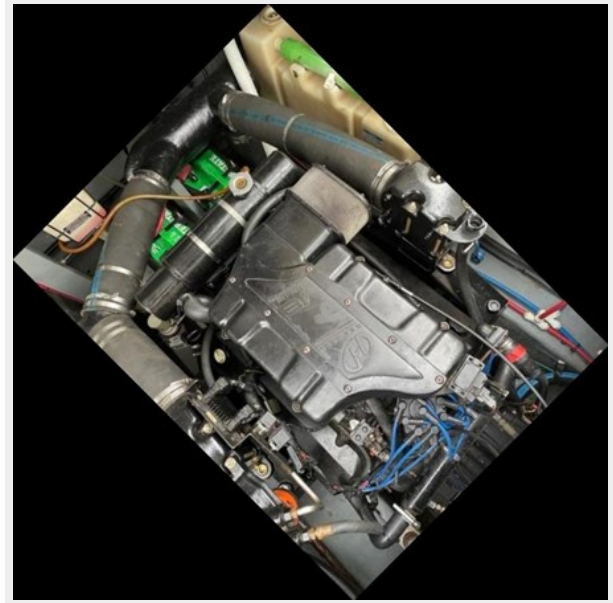
68_2796247_340_port_engine



69_2796247_340_vacuflush



70_2796247_340_stbd_engine



71_2796247_340_engine_room



72_2796247_340_engine



73_2796247_340_stbdfwd



74_2796247_340_stbd_mid



75_2796247_340_stbd_aft



76_2796247_340_stbd_running_gear



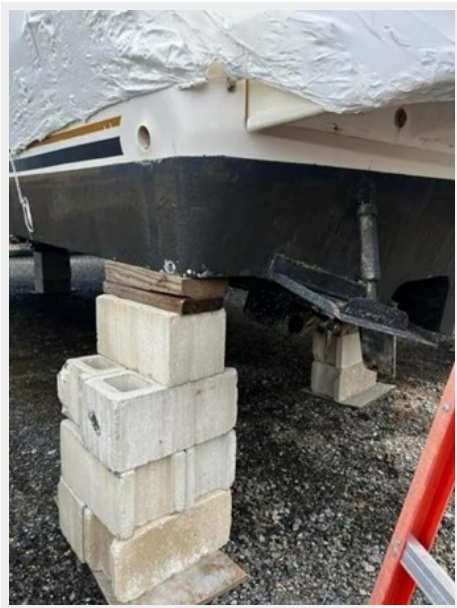
77_2796247_340_stbd_aft



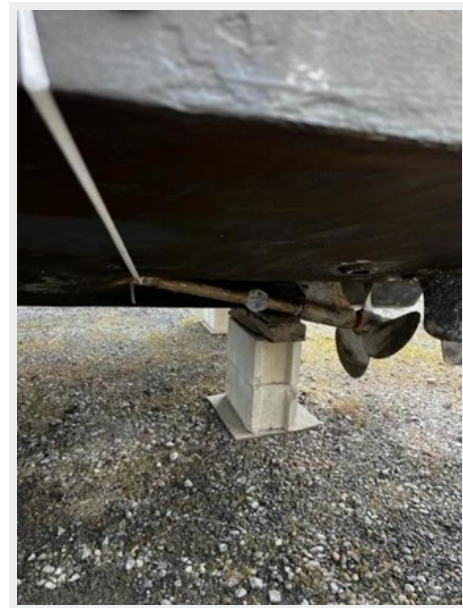
78_2796247_340_port_aft



79_2796247_340_port_aft_corner



80_2796247_340_port_running_gear



81_2796247_340_port_mid



82_2796247_340_port_mid_fwd



83_2796247_340_port_fwd



CONTACTS

Andrey Shestakov, leading yacht broker of the sales department of Shestakov Yacht Sales Inc. Shestakov Yacht Sales Inc., the official representative of the Miami/Fort Lauderdale FL headquarters.

Contact details

Email: andrey@shestakovyachtsales.com

Web: shestakovyachtsales.com/en/

Telephones

USA: +1(954)274-4435

Office hours

Monday – Saturday: **9:00 - 21:00** EDT

Sunday: **closed**

Address



Harbour Towne Marina, 850 NE 3rd St,
STE 213, Dania, FL 33004