

BLUE MOON — MERIDIAN



Builder: MERIDIAN

Year Built: 2006

Model: Motor Yacht

Price: PRICE ON APPLICATION

Location: United States

LOA: 40' (12.19mm)

Beam: 14.33

Max Draft: 3' 10" (1.17mm)

Cruise Speed: 15.64 Knots Kts. (18 MPH)

Max Speed: 19.12 Knots Kts. (22 MPH)

Our experienced yacht broker, Andrey Shestakov, will help you choose and buy a yacht that best suits your needs **Blue Moon — MERIDIAN** from our catalogue. Presently, at Shestakov Yacht Sales Inc., we have a wide variety of yachts available on our sale's list. We also work in close contact with all the big yacht manufacturers from all over the world.

If you would like to buy a yacht **Blue Moon — MERIDIAN** or would like help answering any questions concerning purchasing, selling or chartering a yacht, please call **+1(954)274-4435**

TABLE OF CONTENTS

TABLE OF CONTENTS	2
SPECIFICATIONS	4
Overview	4
Basic Information	5
Dimensions	5
Speed, Capacities and Weight	5
Accommodations	5
Hull and Deck Information	6
Engine Information	6
PHOTOS	7
0_2796431_1	7
1_2796431_	7
3_2796431_	7
2_2796431_	7
4_2796431_	7
5_2796431_	7
6_2796431_	8
7_2796431_	8
8_2796431_	8
9_2796431_	8
10_2796431_	8
11_2796431_	8
12_2796431_	9
13_2796431_	9
14_2796431_	9
15_2796431_	9
16_2796431_	9
17_2796431_	9

19_2796431_	10
18_2796431_	10
20_2796431_	10
21_2796431_	10
22_2796431_	11
23_2796431_	11
25_2796431_	11
24_2796431_	11
27_2796431_	11
26_2796431_	11
28_2796431_	12
29_2796431_	12
CONTACTS	13
Contact details	13
Telephones	13
Office hours	13
Address	13

SPECIFICATIONS

Overview

Blue Moon will finish her loop in March/ April of 2023.

This 40-foot boat packs a big punch, maximizing living space and luxurious comfort.

408 MERIDIAN – MOTOREYACHT REVIEW (BOATTEST.COM)

(BoatTest.com)

Standing beside the yacht and looking at her profile, she appeared to be a lot larger than 40 feet. Meridian Yachts packs a lot of features and amenities into the 408 Motoryacht.

One of the first things you notice on the bridge is how quiet her engines are when running. With two diesels and a generator running, the gauges were the only indication she was ready to roll. The Meridian has a new docking system that everyone will like. It is an integrated bow and stern thruster design that was easy to use and will simplify the docking job.

The thrusters are brought together on the dash with a movable silhouette of a boat; not a joystick. Simply move the bow of the boat left or right and the Meridian will follow. There are many combinations you can use encompassing both the bow and stern thrusters. With a little practice this device should make even the toughest docking situation a snap.

The weather was typical for Florida in August. Hot, hot, hot. We were in the low 90's with plenty of humidity and the seas calm; a perfect day for a boat ride. Too bad we didn't stop to jump in for a swim! As can be seen by the performance numbers of the 408 Meridian, she has a nice cruise speed and has the amenities of a luxury condo. Although we didn't have a chance to run her in rough seas, the Meridian Yachts' representative said she will run with the best of them.

Her interior shows a lot of thought for entertaining and cruising. The Meridian 408 has a large Main Salon with plenty of seating with a couch on either side with a built in entertainment center. Her entertainment center is surrounded by built in cabinets and flows nicely with the interior of the boat. In addition the main saloon is open and airy with all natural light from the windows.

A few steps from the Salon is the Galley, boasting plenty of counter space and a full-size refrigerator. The solid galley cabinets, Corian countertop and the teak and holly flooring give her a warm inviting feeling. You even have a private laundry room. Her laundry room has plenty of storage and is cleverly designed not to take away additional cabin space.

The Meridian 408 motoryacht offers both a forward and aft stateroom. Both have plenty of room for relaxing. The aft stateroom offers a large double berth, built in cabinets with lots of storage and a nice private head and shower. In addition, her windows provide an open and comfortable feeling.

The top side of the motoryacht is designed for entertaining and relaxation. The expansive swim platform allows easy motor access, inflatable cleats, power supply connections and a shower. Integrated into the platform is a molded fiberglass staircase and hand rail.

The 408 Motoryacht offers two more top side large areas. The bridge has two L-shaped lounges along with the captain's chair. This captain's chair will put you in the center of all activities. The helm has great visibility and the gauges are easy to read. The dash board allow for plenty of electronics without the cluttered feeling. A few short steps from the bridge you will find another large area with a built in refrigerator and neat bar. Both of these areas are covered by built in fiberglass hard tops.

Access to the engine room is accessed through 2 hatches in the Main Salon. Once in the engine room you have a generous amount of room to service the engine and other mechanical systems. Her engine room has a good layout and the hatches are sound proof for more enjoyment.

Basic Information

Category: Motor Yacht

Model Year: 2006

Year Built: 2006

Country: United States

Dimensions

LOA: 40' (12.19mm)

Beam: 14.33

Max Draft: 3' 10" (1.17mm)

Speed, Capacities and Weight

Cruise Speed: 15.64 Knots Kts. (18 MPH)

Max Speed: 19.12 Knots Kts. (22 MPH)

Water Capacity: 90 Gallons

Holding Tank: 55 Gal Gallons

Fuel Capacity: 330 Gal Gallons

Accommodations

Total Cabins: 2

Total Heads: 2

Hull and Deck Information

Hull Material: Fiberglass

Engine Information

Engines: 2

Manufacturer: Cummins

Engine Type: Inboard

Fuel Type: Diesel

PHOTOS

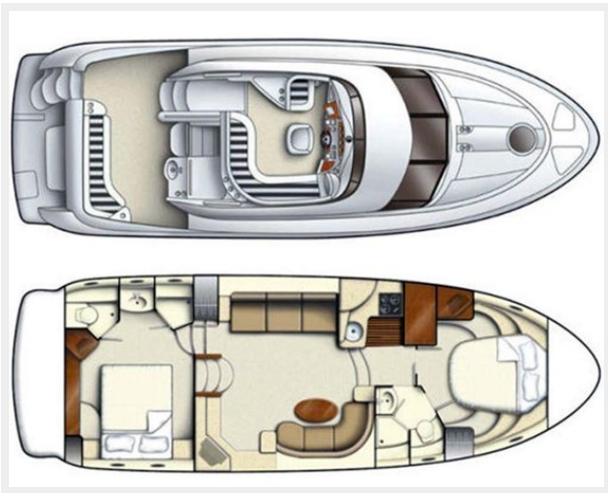
0_2796431_1



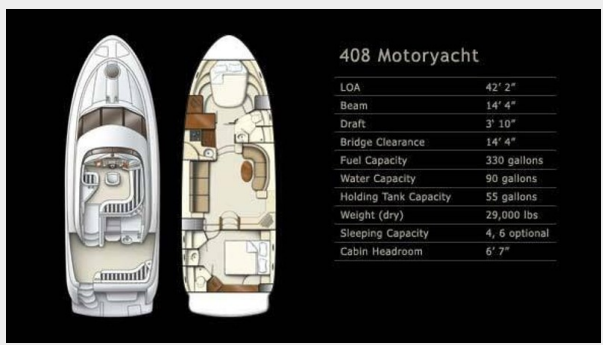
1_2796431_



3_2796431_



2_2796431_



4_2796431_



5_2796431_



6_2796431_



7_2796431_



8_2796431_



9_2796431_



10_2796431_



11_2796431_



12_2796431_



13_2796431_



14_2796431_



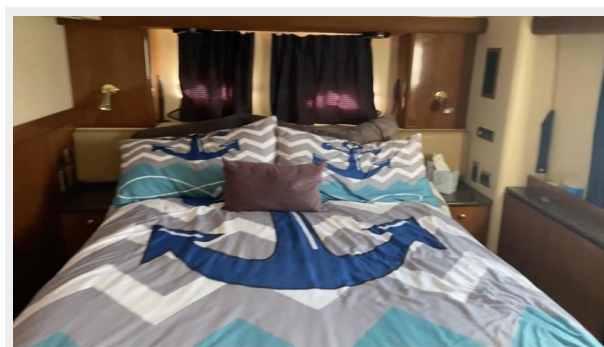
15_2796431_



16_2796431_



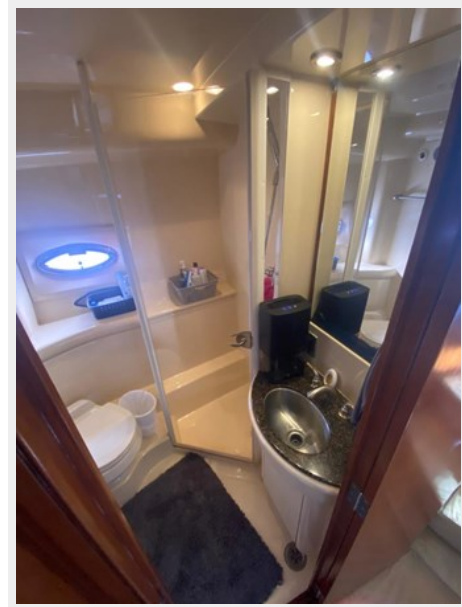
17_2796431_



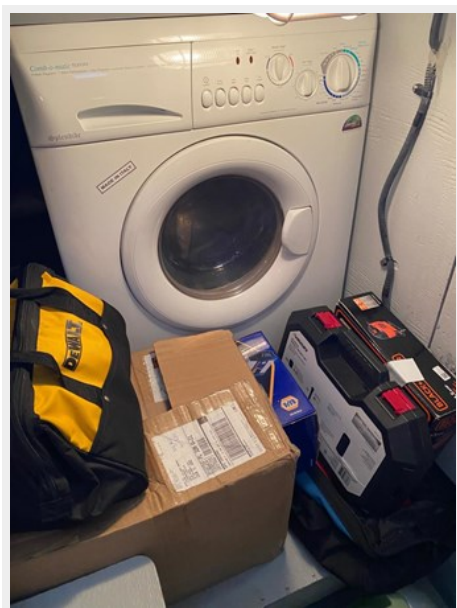
18_2796431_



19_2796431_



20_2796431_



21_2796431_



22_2796431_



23_2796431_



25_2796431_



24_2796431_



27_2796431_



26_2796431_



28_2796431_



29_2796431_



CONTACTS

Andrey Shestakov, leading yacht broker of the sales department of Shestakov Yacht Sales Inc. Shestakov Yacht Sales Inc., the official representative of the Miami/Fort Lauderdale FL headquarters.

Contact details

Email: **andrey@shestakovyachtsales.com**

Web: shestakovyachtsales.com/en/

Telephones

USA: **+1(954)274-4435**

Office hours

Monday – Saturday: **9:00 - 21:00 EDT**

Sunday: **closed**

Address



Harbour Towne Marina, 850 NE 3rd St,
STE 213, Dania, FL 33004