

BLUE MOON — MERIDIAN



Судостроитель: MERIDIAN

Год постройки: 2006

Модель: Моторная яхта

Цена: ЦЕНА ЯХТЫ ПО ЗАПРОСУ

Местонахождение: United States

Длина общая: 40' (12.19mm)

Ширина: 14.33

Макс. осадка: 3' 10" (1.17mm)

Крейс. скорость: 15.64 Knots Kts. (18 MPH)

Макс. скорость: 19.12 Knots Kts. (22 MPH)

Купить **Blue Moon — MERIDIAN** а также выбрать подходящую вам яхту из нашего каталога яхт вам поможет опытный яхтенный брокер Андрей Шестаков. На сегодняшний день компания **Shestakov Yacht Sales Inc.** имеет большое количество яхт в собственном списке продаж, а также тесно сотрудничает со всеми крупными яхтенными производителями по всему миру.

Для того чтобы купить яхту **Blue Moon — MERIDIAN** а также проконсультироваться по любому вопросу связанному с покупкой, продажей, чартером яхт позвоните по телефону **+7(918)465-66-44**.

ОГЛАВЛЕНИЕ

ОГЛАВЛЕНИЕ	2
ХАРАКТЕРИСТИКИ	4
Обзор	4
Основная информация	5
Размеры	5
Скорость, вместимость и масса	5
Размещение	6
Корпус и палуба	6
Информация о двигателе	6
ФОТОГРАФИИ	7
0_2796431_1	7
1_2796431_	7
3_2796431_	7
2_2796431_	7
4_2796431_	7
5_2796431_	7
6_2796431_	8
7_2796431_	8
8_2796431_	8
9_2796431_	8
10_2796431_	8
11_2796431_	8
12_2796431_	9
13_2796431_	9
14_2796431_	9
15_2796431_	9
16_2796431_	9
17_2796431_	9

19_2796431_	10
18_2796431_	10
20_2796431_	10
21_2796431_	10
22_2796431_	11
23_2796431_	11
25_2796431_	11
24_2796431_	11
27_2796431_	11
26_2796431_	11
28_2796431_	12
29_2796431_	12
КОНТАКТЫ	13
Контактная информация	13
Телефоны	13
Время работы	13
Адрес	13

ХАРАКТЕРИСТИКИ

Обзор

Blue Moon will finish her loop in March/ April of 2023.

This 40-foot boat packs a big punch, maximizing living space and luxurious comfort.

408 MERIDIAN – MOTOREYACHT REVIEW (BOATTEST.COM)

(BoatTest.com)

Standing beside the yacht and looking at her profile, she appeared to be a lot larger than 40 feet. Meridian Yachts packs a lot of features and amenities into the 408 Motoryacht.

One of the first things you notice on the bridge is how quiet her engines are when running. With two diesels and a generator running, the gauges were the only indication she was ready to roll. The Meridian has a new docking system that everyone will like. It is an integrated bow and stern thruster design that was easy to use and will simplify the docking job.

The thrusters are brought together on the dash with a movable silhouette of a boat; not a joystick. Simply move the bow of the boat left or right and the Meridian will follow. There are many combinations you can use encompassing both the bow and stern thrusters. With a little practice this device should make even the toughest docking situation a snap.

The weather was typical for Florida in August. Hot, hot, hot. We were in the low 90's with plenty of humidity and the seas calm; a perfect day for a boat ride. Too bad we didn't stop to jump in for a swim! As can be seen by the performance numbers of the 408 Meridian, she has a nice cruise speed and has the amenities of a luxury condo. Although we didn't have a chance to run her in rough seas, the Meridian Yachts' representative said she will run with the best of them.

Her interior shows a lot of thought for entertaining and cruising. The Meridian 408 has a large Main Salon with plenty of seating with a couch on either side with a built in entertainment center. Her entertainment center is surrounded by built in cabinets and flows nicely with the interior of the boat. In addition the main saloon is open and airy with all natural light from the windows.

A few steps from the Salon is the Galley, boasting plenty of counter space and a full-size refrigerator. The solid galley cabinets, Corian countertop and the teak and holly flooring give her a warm inviting feeling. You even have a private laundry room. Her laundry room has plenty of storage and is cleverly designed not to take away additional cabin space.

The Meridian 408 motoryacht offers both a forward and aft stateroom. Both have plenty of room for relaxing. The aft stateroom offers a large double berth, built in cabinets with lots of storage and a nice private head and shower. In addition, her windows provide an open and comfortable feeling.

The top side of the motoryacht is designed for entertaining and relaxation. The expansive swim platform allows easy motor access, inflatable cleats, power supply connections and a shower. Integrated into the platform is a molded fiberglass staircase and hand rail.

The 408 Motoryacht offers two more top side large areas. The bridge has two L-shaped lounges along with the captain's chair. This captain's chair will put you in the center of all activities. The helm has great visibility and the gauges are easy to read. The dash board allow for plenty of electronics without the cluttered feeling. A few short steps from the bridge you will find another large area with a built in refrigerator and neat bar. Both of these areas are covered by built in fiberglass hard tops.

Access to the engine room is accessed through 2 hatches in the Main Salon. Once in the engine room you have a generous amount of room to service the engine and other mechanical systems. Her engine room has a good layout and the hatches are sound proof for more enjoyment.

Основная информация

Тип судна: Моторная яхта

Модельный год: 2006

Год постройки: 2006

Страна: United States

Размеры

Длина общая: 40' (12.19mm)

Ширина: 14.33

Макс. осадка: 3' 10" (1.17mm)

Скорость, вместимость и масса

Крейс. скорость: 15.64 Knots Kts. (18 MPH)

Макс. скорость: 19.12 Knots Kts. (22 MPH)

Вместимость воды: 90 Gallons

Вместимость сточного бака: 55 Gal Gallons

Объем топливного бака: 330 Gal Gallons

Размещение

Всего кают: 2

Всего ком. состава: 2

Корпус и палуба

Материал корпуса: Fiberglass

Информация о двигателе

Двигатели: 2

Производитель: Cummins

Тип двигателя: Inboard

Тип топлива: Diesel

ФОТОГРАФИИ

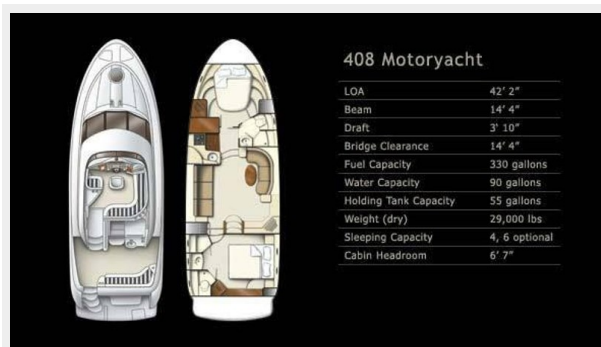
0_2796431_1



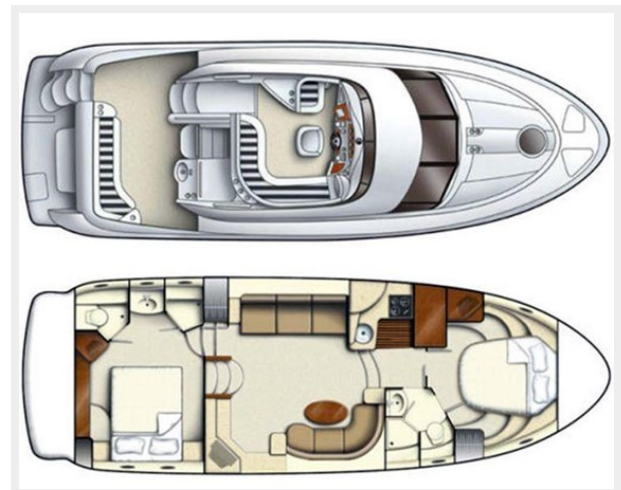
1_2796431_



2_2796431_



3_2796431_



4_2796431_



5_2796431_



6_2796431_



7_2796431_



8_2796431_



9_2796431_



10_2796431_



11_2796431_



12_2796431_



13_2796431_



14_2796431_



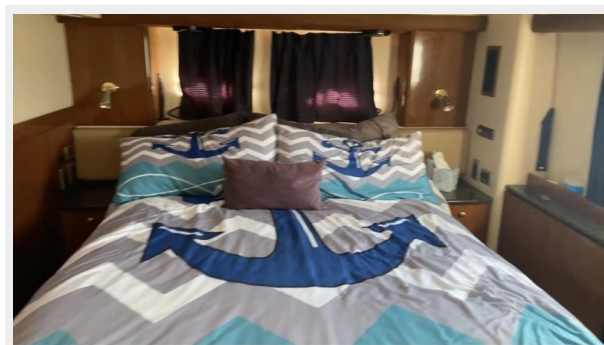
15_2796431_



16_2796431_



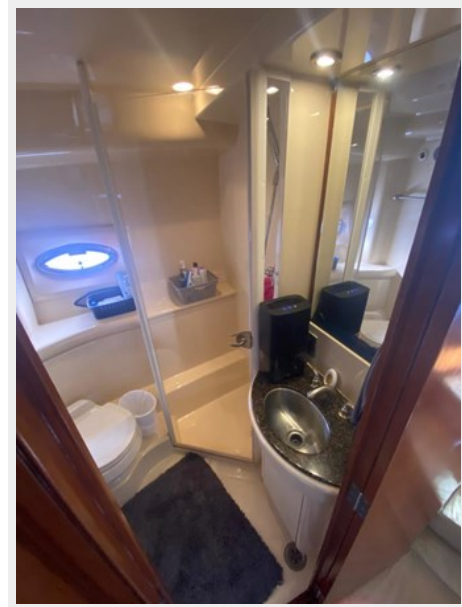
17_2796431_



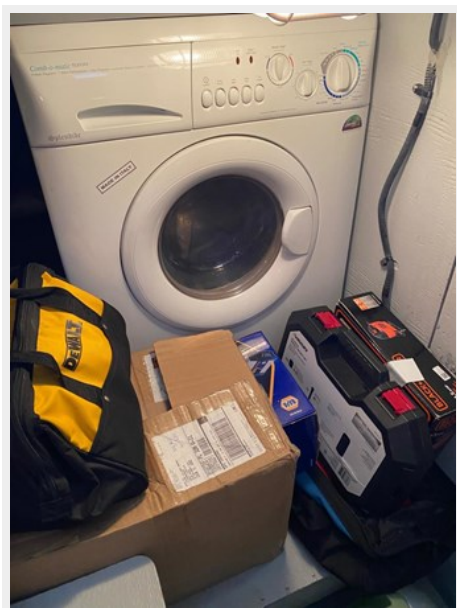
18_2796431_



19_2796431_



20_2796431_



21_2796431_



22_2796431_



23_2796431_



24_2796431_



25_2796431_



26_2796431_



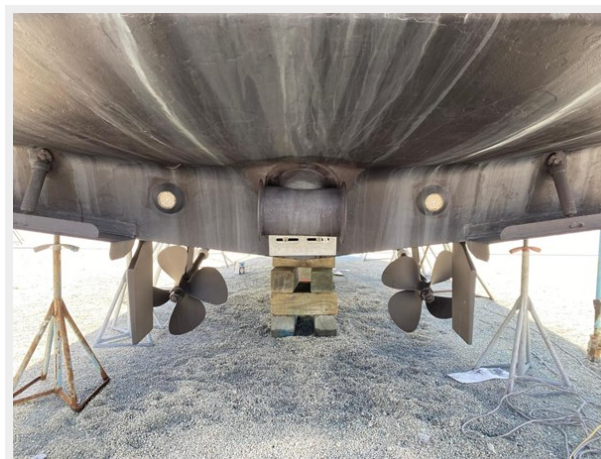
27_2796431_



28_2796431_



29_2796431_



КОНТАКТЫ

Андрей Шестаков (Andrey Shestakov) – ведущий яхтенный брокер отдела продаж яхт и судов компании Shestakov Yacht Sales Inc. Официальный представитель Shestakov Yacht Sales Inc. для русскоговорящих клиентов в центральном офисе компании в Майами/Форт Лодердейл/Флорида/США.

Контактная информация

Email: andrey@shestakovyachtsales.com

Web: shestakovyachtsales.com

Телефоны

Краснодарский край: **+7(918)465-66-44**

США, Майами, Флорида: **+1(954)274-4435**

Время работы

Понедельник – Суббота: **9:00 - 21:00**
EDT

Воскресенье: **Закрито**

Адрес



Harbour Towne Marina, 850 NE 3rd St,
STE 213, Dania, FL 33004