

NUMARINE 32XP HULL #6 — NUMARINE



Builder: NUMARINE

Year Built: 2025

Model: Motor Yacht

Price: PRICE ON APPLICATION

Location: Turkey

LOA: 105' (32mm)

Beam: 26.25

Min Draft: 8' (2.44mm)

Max Draft: 8' 6" (2.59mm)

Cruise Speed: 12 Knots Kts. (14 MPH)

Max Speed: 13.8 Knots Kts. (16 MPH)

Our experienced yacht broker, Andrey Shestakov, will help you choose and buy a yacht that best suits your needs **Numarine 32XP Hull #6 — NUMARINE** from our catalogue. Presently, at Shestakov Yacht Sales Inc., we have a wide variety of yachts available on our sale's list. We also work in close contact with all the big yacht manufacturers from all over the world.

If you would like to buy a yacht **Numarine 32XP Hull #6 — NUMARINE** or would like help answering any questions concerning purchasing, selling or chartering a yacht, please call **+1(954)274-4435**

TABLE OF CONTENTS

TABLE OF CONTENTS	2
SPECIFICATIONS	3
Overview	3
Basic Information	3
Dimensions	4
Speed, Capacities and Weight	4
Accommodations	4
Hull and Deck Information	4
Engine Information	5
PHOTOS	6
CONTACTS	15
Contact details	15
Telephones	15
Office hours	15
Address	15

SPECIFICATIONS

Overview

32XP Hull #6 is available with a June 2025 delivery slot.

New Construction - Steel Hull/Full Displacement - 4,000nm Range - 5 or 6 cabin layouts available.

6 cabin layout includes a private owners deck on the upper level where the sky lounge is typically located as featured on Hull #4 now named 'ZARANIA'. The 5 cabin layout has the more traditional layout with the master forward on the main deck & 4 additional cabins located on the lower deck.

The 32XP is a true global cruiser featuring a full displacement steel hull with composite superstructure. She is powered by twin MAN 800hp engines that give her a maximum speed of 14 knots, a cruise speed of 12 knots, and at an economical speed of 9 knots your range exceeds 4,000nm. Upgraded MAN 900hp IMO Tier III engines are a \$370,000 option and are essentially becoming required for new build deliveries in 2024 and later due to new EPA requirements

Her large open upper deck features a massive 2,500kg davit allowing you to carry up to a 8.5m tender plus additional water sports toys. (Hull #2 carries a 28ft Axopar on deck)

A new layout created for North American clients features a country kitchen forward on the main deck allowing a more casual gathering place for guests and crew for meals.

General arrangement floor plans are available showcasing the numerous layouts available on the 32XP so please inquire to receive additional information.

Basic Information

Category: Motor Yacht

Sub Category: Expedition or Explorer

Model Year: 2025

Year Built: 2025

Country: Turkey

Dimensions

LOA: 105' (32mm)

Beam: 26.25

Min Draft: 8' (2.44mm)

Max Draft: 8' 6" (2.59mm)

Speed, Capacities and Weight

Cruise Speed: 12 Knots Kts. (14 MPH)

Cruise Speed Range: 4000

Max Speed: 13.8 Knots Kts. (16 MPH)

Gross Tonnage: 300 Pounds

Water Capacity: 3000 Gallons

Holding Tank: 501.93 Gal Gallons

Fuel Capacity: 7660.99 Gal Gallons

Accommodations

Total Cabins: 5

Sleeps: 10

Total Heads: 6

Crew Cabin: 6

Crew Berths: 5

Crew Heads: 3

Hull and Deck Information

Hull Material: Steel

Deck Material: Teak over Fiberglass

Hull Configuration: Displacement w/
Bulbous Bow

Hull Color: Custom as per the Client's
Request

Hull Designer: Umberto Tagliavini

Exterior Designer: Can Yalman

Interior Designer: Can Yalman & Esra
Kazmirci

Engine Information

Engines: 2

Manufacturer: MAN

Engine Type: Inboard

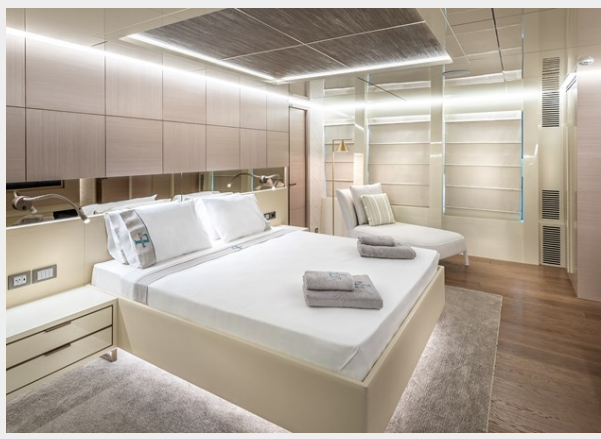
Fuel Type: Diesel

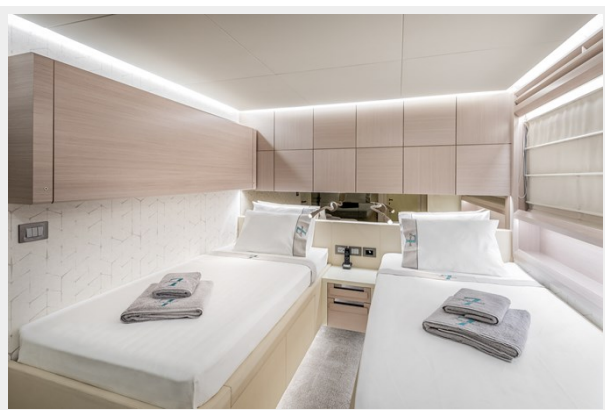
PHOTOS

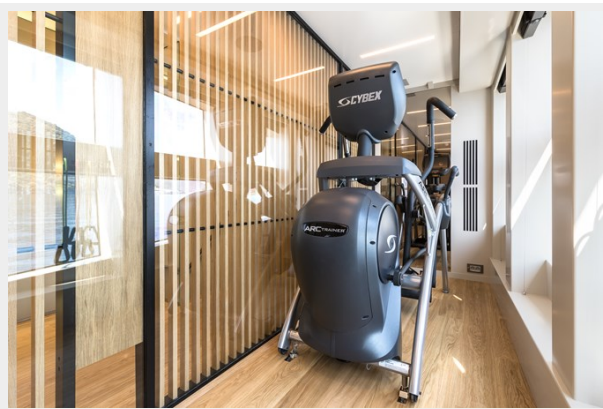


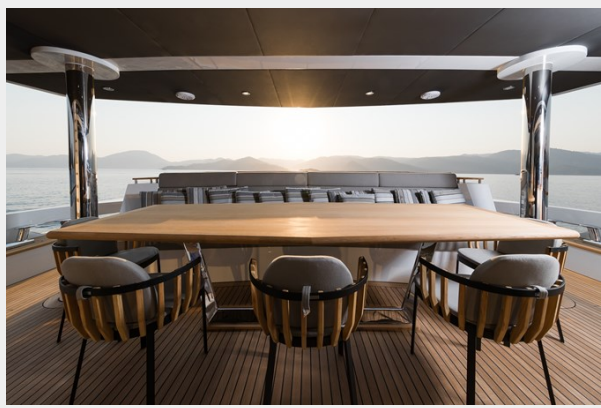
















CONTACTS

Andrey Shestakov, leading yacht broker of the sales department of Shestakov Yacht Sales Inc. Shestakov Yacht Sales Inc., the official representative of the Miami/Fort Lauderdale FL headquarters.

Contact details

Email: andrey@shestakovyachtsales.com

Web: shestakovyachtsales.com/en/

Telephones

USA: +1(954)274-4435

Office hours

Monday – Saturday: **9:00 - 21:00** EDT

Sunday: **closed**

Address



Harbour Towne Marina, 850 NE 3rd St,
STE 213, Dania, FL 33004