

## NUMARINE 26XP-24 — NUMARINE



**Builder:** [NUMARINE](#)

**Year Built:** 2023

**Model:** Motor Yacht

**Price:** PRICE ON APPLICATION

**Location:** Turkey

**LOA:** 85' 4" (26mm)

**Beam:** 21.65

**Max Draft:** 6' 7" (2mm)

**Cruise Speed:** 11.5 Knots Kts. (13 MPH)

**Max Speed:** 14 Knots Kts. (16 MPH)

Our experienced yacht broker, Andrey Shestakov, will help you choose and buy a yacht that best suits your needs **Numarine 26XP-24 — NUMARINE** from our catalogue. Presently, at **Shestakov Yacht Sales Inc.**, we have a wide variety of yachts available on our sale's list. We also work in close contact with all the big yacht manufacturers from all over the world.

If you would like to buy a yacht **Numarine 26XP-24 — NUMARINE** or would like help answering any questions concerning purchasing, selling or chartering a yacht, please call **+1(954)274-4435**

---

# TABLE OF CONTENTS

---

TABLE OF CONTENTS	2
SPECIFICATIONS	3
Overview	3
Basic Information	4
Dimensions	4
Speed, Capacities and Weight	4
Accommodations	4
Hull and Deck Information	5
Engine Information	5
PHOTOS	6
CONTACTS	12
Contact details	12
Telephones	12
Office hours	12
Address	12

---

# SPECIFICATIONS

---

## Overview

---

Numarine 26XP Hull #24 is now available with a Spring 2023 delivery with construction already started.

The 26XP is the most popular model in the XP series and is available in both a full displacement or semi-displacement hull form. The full displacement model has the smaller engine package & impressive 3,000nm range while the semi-displacement model has upgrade MAN 1800hp engines giving her a top speed of 30 knots yet still a solid range of 1,800nm at economical speeds.

We have available delivery slots for both 2023 and 2024 depending on which model you are interested in.

The 26XP is an extremely large volume 26m which gives you the impression of being on a much larger yacht due to her 6.6m beam and open floor plan with impressive floor to ceiling glass windows in the main salon.

The upper sundeck is available with an upper helm area, standard or extended hard top and can include an optional davit for the ability to carry a secondary tender or jet skis. A jacuzzi is also available upon request as well as a silent package that includes solar panels on the hard top for the battery bank.

Standard configuration allows you to carry a tender on the hydraulic swim platform back aft.

Her layout sleeps 8 guests in 4 cabins including a full beam master cabin as well as a spacious VIP all located on the lower deck. Crew accommodations consist of 2 cabins that can sleep 3-4 depending on the buyers requirement.

One of the most impressive features is the 7ft of headroom found throughout the yacht.

When looking at this segment of the market and comparing size to price/value/volume the 26XP offers one of the best platforms on the market today.

Additional information is available upon request including picture presentations, pricing & options lists, fuel curve, vibration/silent DB level readings, and available delivery slots.

---

## Basic Information

---

**Category:** Motor Yacht

**Sub Category:** Expedition or Explorer

**Model Year:** 2023

**Year Built:** 2023

**Country:** Turkey

---

## Dimensions

---

**LOA:** 85' 4" (26mm)

**LWL:** 78' 7" (23.95mm)

**Beam:** 21.65

**Max Draft:** 6' 7" (2mm)

---

## Speed, Capacities and Weight

---

**Cruise Speed:** 11.5 Knots Kts. (13 MPH)

**Cruise Speed Range:** 3000

**Max Speed:** 14 Knots Kts. (16 MPH)

**Water Capacity:** 2000 Gallons

**Holding Tank:** 264.17 Gal Gallons

**Fuel Capacity:** 2641.72 Gal Gallons

---

## Accommodations

---

**Total Cabins:** 4

**Sleeps:** 8

**Total Heads:** 5

**Crew Cabin:** 5

**Crew Berths:** 4

**Crew Heads:** 2

---

## Hull and Deck Information

---

**Hull Material:** GRP

**Deck Material:** Teak over Fiberglass

**Hull Configuration:** Full Displacement

**Hull Color:** Custom as per the Client's Request

**Hull Designer:** Umberto Tagliavini

**Exterior Designer:** Can Yalman

**Interior Designer:** Can Yalman or Client Representative

---

## Engine Information

---

**Engines:** 2

**Manufacturer:** MAN

**Engine Type:** Inboard

**Fuel Type:** Diesel

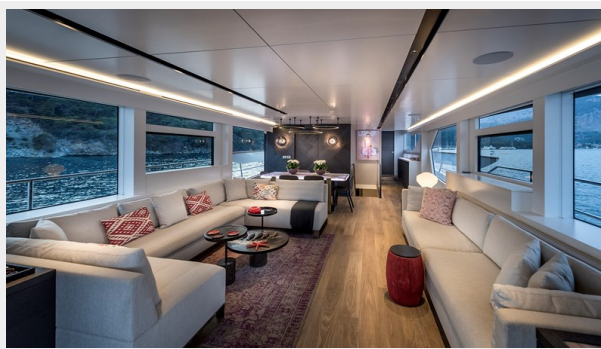
# PHOTOS



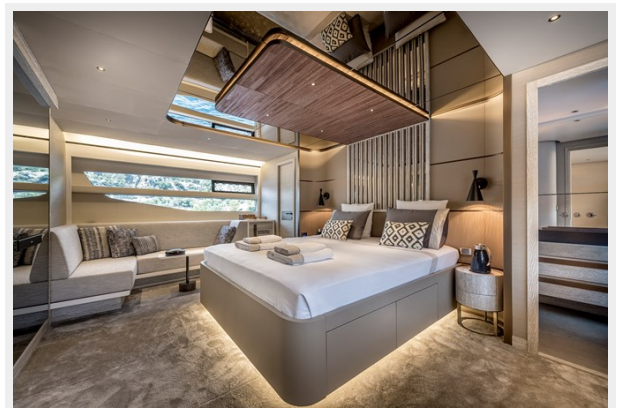


















# CONTACTS

---

Andrey Shestakov, leading yacht broker of the sales department of Shestakov Yacht Sales Inc. Shestakov Yacht Sales Inc., the official representative of the Miami/Fort Lauderdale FL headquarters.

## Contact details

---

Email: [andrey@shestakovyachtsales.com](mailto:andrey@shestakovyachtsales.com)

Web: [shestakovyachtsales.com/en/](http://shestakovyachtsales.com/en/)

## Telephones

---

USA: +1(954)274-4435

## Office hours

---

Monday – Saturday: **9:00 - 21:00** EDT

Sunday: **closed**

## Address

---



Harbour Towne Marina, 850 NE 3rd St,  
STE 213, Dania, FL 33004