

G — MAORI



Builder: MAORI

Year Built: 2013

Model: Motor Yacht

Price: €1,995,000 EUR

Location: France

LOA: 78' 2" (23.82mm)

Beam: 22.27

Min Draft: 4' (1.2mm)

Max Draft: 4' (1.2mm)

Cruise Speed: 38 Knots Kts. (44 MPH)

Max Speed: 43 Knots Kts. (49 MPH)

Our experienced yacht broker, Andrey Shestakov, will help you choose and buy a yacht that best suits your needs **G — MAORI** from our catalogue. Presently, at Shestakov Yacht Sales Inc., we have a wide variety of yachts available on our sale's list. We also work in close contact with all the big yacht manufacturers from all over the world.

If you would like to buy a yacht **G — MAORI** or would like help answering any questions concerning purchasing, selling or chartering a yacht, please call **+1(954)274-4435**

TABLE OF CONTENTS

TABLE OF CONTENTS	2
SPECIFICATIONS	4
Overview	4
Basic Information	5
Dimensions	5
Speed, Capacities and Weight	5
Accommodations	5
Hull and Deck Information	6
Engine Information	6
PHOTOS	7
Pre-refit Running Shot 2018	7
Pre-refit Running Shot 2018	7
Salon/Cockpit	7
Salon/Cockpit	7
Pre-refit Running Shot 2018	8
Pre-refit Running Shot 2018	8
Post-Refit, At Anchor Summer 2022	9
Master Cabin	12
Master Cabin	12
Master Cabin	12
Master Cabin	12
Master Bath	13
Guest Cabin	14
Guest Cabin	14
Guest Cabin	14
interno_05	15
Guest Cabin	15
Stairway	15

Helm	16
CONTACTS	17
Contact details	17
Telephones	17
Office hours	17
Address	17

SPECIFICATIONS

Overview

- Modern, Stealth look – ALWAYS turns heads in port!
- Fast with a cruise at 35 knots and top speed of 43 knots
- Strong, stable hull & equipped with two large Gyro Stabilisers
- 2022 Refit including a full repaint
- Large transformer hydraulic swim platform
- Modern, minimalistic interior by Nauta Design

G is the fast cruiser that always stands out from the crowd! Her modern exterior lines and trick deep gloss black paint never fail to turn heads whenever she is in port. She serves equally well as a day/weekend boat or a pocket superyacht with large deck spaces, well-appointed luxury interior and breath-taking performance.

Her exterior provides two main deck areas for socialising and a huge aft deck with large hydraulic swim platform that serves a multitude of uses such as swim ladder, tender launching and platform extension. The interior is equally impressive with a spacious multi-use galley, salon and helm station surrounded on all sides by tinted glass giving a modern open feel. Below decks provide two roomy, well-appointed cabins for 5 – a full beam master suite forward and a three bunk cabin starboard side aft.

She is conveniently lying in St.Tropez, a port that perfectly suits her head turning presence, and inspections are encouraged.

Basic Information

Category: Motor Yacht

Model Year: 2013

Year Built: 2013

Refit Type: REPAINT AND MECHANICAL

Country: France

Dimensions

LOA: 78' 2" (23.82mm)

Beam: 22.27

Min Draft: 4' (1.2mm)

Max Draft: 4' (1.2mm)

Speed, Capacities and Weight

Cruise Speed: 38 Knots Kts. (44 MPH)

Cruise Speed Range: 450

Max Speed: 43 Knots Kts. (49 MPH)

Gross Tonnage: 71.36 Pounds

Water Capacity: 8000 Gallons

Fuel Capacity: 1241.61 Gal Gallons

Fuel Consumption: 132.09 Gal Gallons

Accommodations

Total Cabins: 2

Total Berths: 4

Sleeps: 5

Total Heads: 2

Crew Cabin: 2

Crew Berths: 2

Crew Heads: 1

Hull and Deck Information

Hull Material: Carbon Composite

Deck Material: Teak

Hull Configuration: Planing

Hull Color: BLACK

Hull Designer: MAORI - NAUTA DESIGN

Exterior Designer: MAORI

Interior Designer: NAUTA DESIGN

Engine Information

Engines: 2

Manufacturer: MAN

Engine Type: Inboard

Fuel Type: Diesel

PHOTOS

Pre-refit Running Shot 2018



Pre-refit Running Shot 2018



Salon/Cockpit



Salon/Cockpit



Pre-refit Running Shot 2018



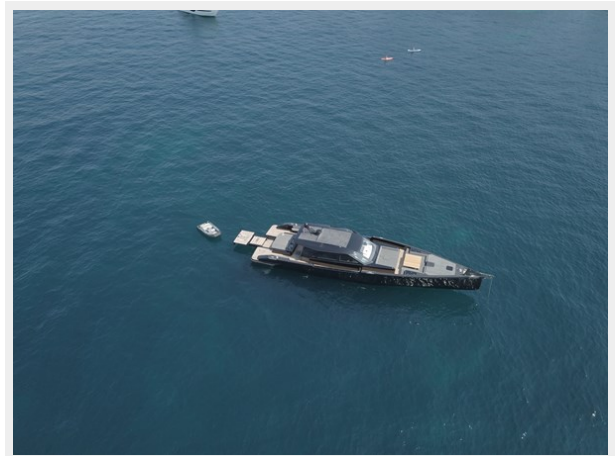
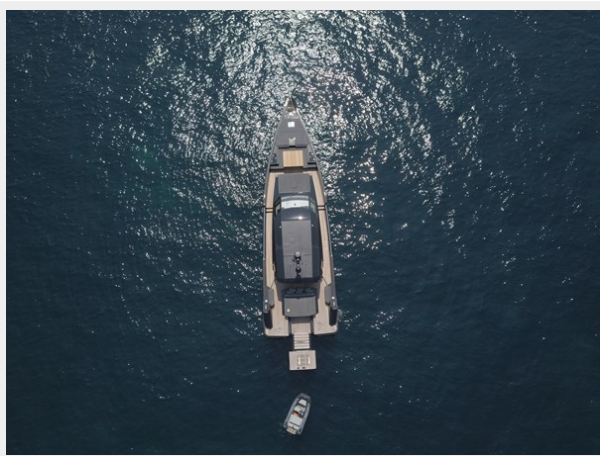
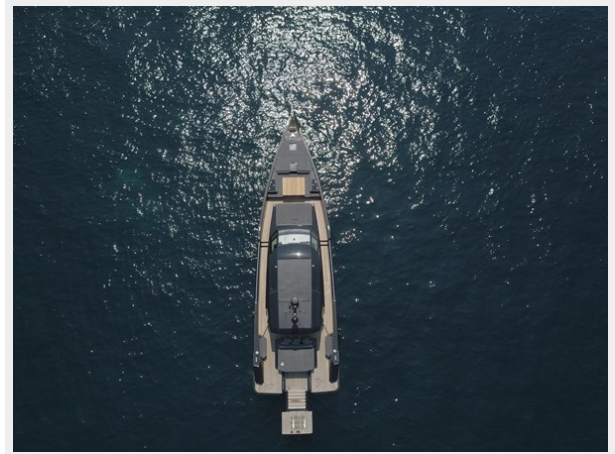
Pre-refit Running Shot 2018





Post-Refit, At Anchor Summer 2022







Master Cabin



Master Cabin



Master Cabin

Master Cabin





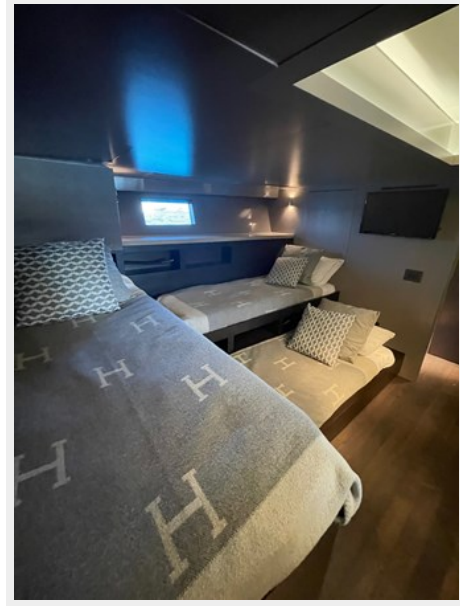
Master Bath



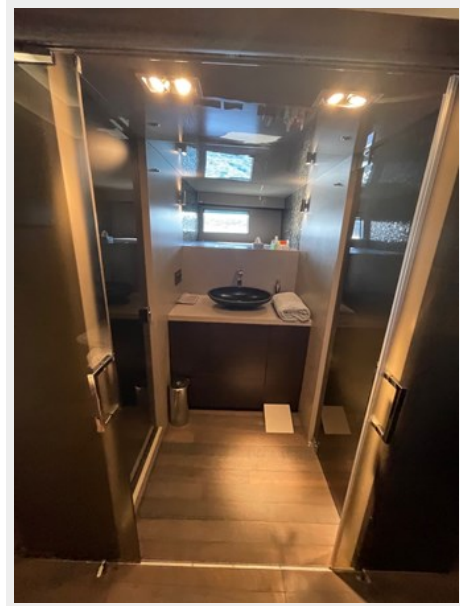
Guest Cabin



Guest Cabin



Guest Cabin

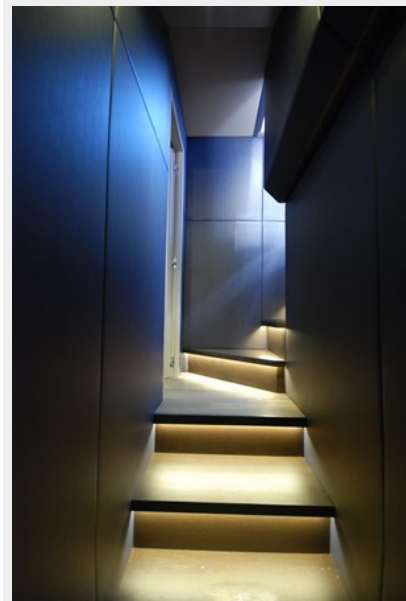


interno_05

Guest Cabin



Stairway



Helm



CONTACTS

Andrey Shestakov, leading yacht broker of the sales department of Shestakov Yacht Sales Inc. Shestakov Yacht Sales Inc., the official representative of the Miami/Fort Lauderdale FL headquarters.

Contact details

Email: andrey@shestakovyachtsales.com

Web: shestakovyachtsales.com/en/

Telephones

USA: +1(954)274-4435

Office hours

Monday – Saturday: **9:00 - 21:00** EDT

Sunday: **closed**

Address



Harbour Towne Marina, 850 NE 3rd St,
STE 213, Dania, FL 33004