

KOMOKWA — HORIZON



Builder: HORIZON

Year Built: 2010

Model: Motor Yacht

Price: PRICE ON APPLICATION

Location: Canada

LOA: 135' (41.15m)

Beam: 28

Max Draft: 7' 7" (2.31m)

Cruise Speed: 10.5 Knots Kts. (12 MPH)

Max Speed: 15 Knots Kts. (17 MPH)

Our experienced yacht broker, Andrey Shestakov, will help you choose and buy a yacht that best suits your needs **Komokwa — HORIZON** from our catalogue. Presently, at Shestakov Yacht Sales Inc., we have a wide variety of yachts available on our sale's list. We also work in close contact with all the big yacht manufacturers from all over the world.

If you would like to buy a yacht **Komokwa — HORIZON** or would like help answering any questions concerning purchasing, selling or chartering a yacht, please call **+1(954)274-4435**

TABLE OF CONTENTS

TABLE OF CONTENTS	2
SPECIFICATIONS	3
Overview	3
Basic Information	3
Dimensions	3
Speed, Capacities and Weight	3
Accommodations	4
Hull and Deck Information	4
Engine Information	4
PHOTOS	5
CONTACTS	15
Contact details	15
Telephones	15
Office hours	15
Address	15

SPECIFICATIONS

Overview

KOMOKWA represents one of the best value on the market today and is the highest optioned Horizon 135 Premier ever built and the only P135 built to DNV class with unlimited restrictions. She is also the only model that features a bulbous bow which drastically improves her comfort when at sea along with her fuel efficiency. With an asking price of \$6.9MM USD she is aggressively priced for a fast sale.

Basic Information

Category: Motor Yacht

Sub Category: Tri-Deck

Model Year: 2010

Year Built: 2010

Refit Type: Cosmetic & Mechanical

Country: Canada

Dimensions

LOA: 135' (41.15mm)

LWL: 118' (35.97mm)

Beam: 28

Max Draft: 7' 7" (2.31mm)

Speed, Capacities and Weight

Cruise Speed: 10.5 Knots Kts. (12 MPH)

Cruise Speed Range: 2700

Max Speed: 15 Knots Kts. (17 MPH)

Max Speed Range: 570 Kts.

Gross Tonnage: 427 Pounds

Water Capacity: 2000 Gallons

Fuel Capacity: 11400 Gal Gallons

Accommodations

Total Cabins: 5

Total Berths: 10

Sleeps: 13

Total Heads: 7

Crew Cabin: 8

Crew Berths: 8

Crew Heads: 4

Hull and Deck Information

Hull Material: Fiberglass

Deck Material: Teak over Fiberglass

Hull Configuration: Full Displacement

Hull Designer: Horizon Yachts

Exterior Designer: Greg Marshall

Interior Designer: Claudia Drettman & JC Espinoza

Engine Information

Engines: 2

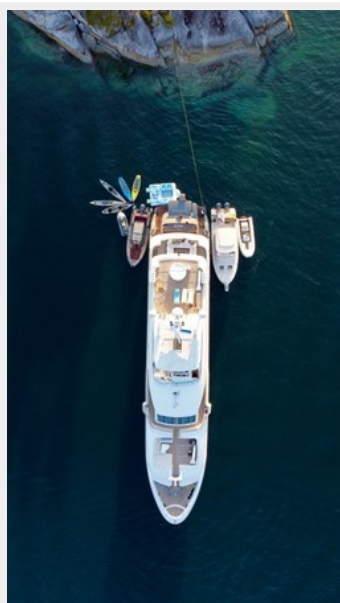
Manufacturer: MTU

Engine Type: Inboard

Fuel Type: Diesel

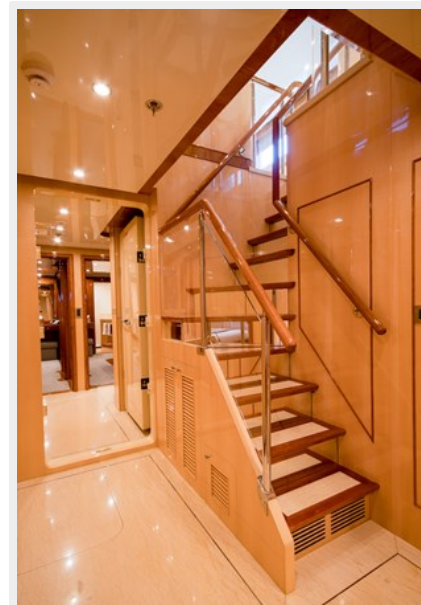
PHOTOS



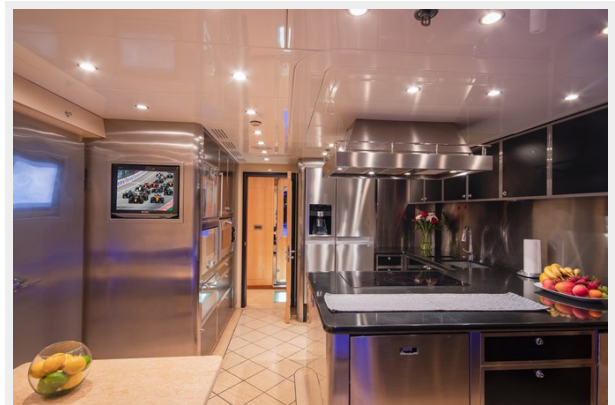


















CONTACTS

Andrey Shestakov, leading yacht broker of the sales department of Shestakov Yacht Sales Inc. Shestakov Yacht Sales Inc., the official representative of the Miami/Fort Lauderdale FL headquarters.

Contact details

Email: andrey@shestakovyachtsales.com

Web: shestakovyachtsales.com/en/

Telephones

USA: +1(954)274-4435

Office hours

Monday – Saturday: **9:00 - 21:00** EDT

Sunday: **closed**

Address



Harbour Towne Marina, 850 NE 3rd St,
STE 213, Dania, FL 33004