

## NECHA — AZIMUT



**Судостроитель:** [AZIMUT](#)

**Год постройки:** 1992

**Модель:** Моторная яхта

**Цена:** **ЦЕНА ЯХТЫ ПО ЗАПРОСУ**

**Местонахождение:** Argentina

**Длина общая:** 94' 0" (28.65m)

**Ширина:** 20' 0" (6.10m)

**Мин. осадка:** 6' 0" (1.80m)

**Крейс. скорость:** 16 Kts. (18 MPH)

**Макс. скорость:** 20 Kts. (23 MPH)

Купить **NECHA — AZIMUT** а также выбрать подходящую вам яхту из нашего каталога яхт вам поможет опытный яхтенный брокер Андрей Шестаков. На сегодняшний день компания **Shestakov Yacht Sales Inc.** имеет большое количество яхт в собственном списке продаж, а также тесно сотрудничает со всеми крупными яхтенными производителями по всему миру.

Для того чтобы купить яхту **NECHA — AZIMUT** а также проконсультироваться по любому вопросу связанному с покупкой, продажей, чартером яхт позвоните по телефону **+7(918)465-66-44**.

# ОГЛАВЛЕНИЕ

ОГЛАВЛЕНИЕ	2
ХАРАКТЕРИСТИКИ	4
Основная информация	4
Размеры	4
Скорость, вместимость и масса	4
Размещение	4
Корпус и палуба	4
Информация о двигателе	5
ПОДРОБНОЕ ОПИСАНИЕ	6
Accommodations	6
Master Stateroom	6
Two VIP Guest Staterooms	6
Guest Staterooms 3 and 4	6
Office or Captain or Guest Stateroom (Main Deck)	6
Saloon	6
Galley	6
Day Head	7
Pilothouse	7
Crew Quarters	7
Electronics	7
Flybridge	7
Deck Equipment	8
Electrical System	8
Mechanical Equipment	8
Hull	8
Exclusions	8
Remarks	8
Disclaimer	9

---

Исключения	9
Отказ от ответственности	9
ФОТОГРАФИИ	10
КОНТАКТЫ	16
Контактная информация	16
Телефоны	16
Время работы	16
Адрес	16

# ХАРАКТЕРИСТИКИ

## Основная информация

Тип судна: Моторная яхта	Подкатегория: Pilothouse
Модельный год: 1992	Год постройки: 1992
Страна: Argentina	Открытая палуба мостика: Да

## Размеры

Длина общая: 94' 0" (28.65m)	Ширина: 20' 0" (6.10m)
Мин. осадка: 6' 0" (1.80m)	

## Скорость, вместимость и масса

Крейс. скорость: 16 Kts. (18 MPH)	Макс. скорость: 20 Kts. (23 MPH)
Водоизмещение: 94800 Pounds	Вместимость воды: 951 Gallons
Объем топливного бака: 2774 Gallons	

## Размещение

Всего кают: 6	Спальные места: 14
Всего ком. состава: 9	Каюты экипажа: 2
Койки экипажа: 4	

## Корпус и палуба

Материал корпуса: Fiberglass	Комплектация корпуса: Modified Deep Vee
------------------------------	---

## Информация о двигателе

---

**Двигатели:** 2

**Производитель:** MTU

**Модель:** 12V183TE

**Тип двигателя:** Inboard

**Тип топлива:** Diesel

---

# ПОДРОБНОЕ ОПИСАНИЕ

---

## Accommodations

---

\*\*\*NOT FOR SALE OR CHARTER TO U.S. RESIDENTS IN U.S. WATERS.\*\*\*Accommodations for 14 guests plus 4 crew. Interior finished in limed oak. New fabrics, carpet, drapes and accordion shades in 2004

## Master Stateroom

---

Full width cabin with king-sized bed, nightstands, settee, vanity table, extensive storage, walk-in closet. Television and stereo. Ensuite bathroom with tub/shower, head, bidet and cabinets, gold plated fittings and marble counters.

## Two VIP Guest Staterooms

---

Each stateroom features a queen-sized bed and nightstands, stereo and ensuite heads with shower, sink, cabinets and gold-plated fittings and marble counters.

## Guest Staterooms 3 and 4

---

Two three berth staterooms with plenty of storage and ensuite baths with showers.

## Office or Captain or Guest Stateroom (Main Deck)

---

Convertible queen sofa bed, television and video, stereo and desk. Ensuite head with shower, wash basin, cabinets and gold-plated fittings and marble counters. This office/stateroom could easily be converted into an on-deck Master or VIP guest stateroom.

## Saloon

---

Large U-shaped sofa to port with smaller sofa to starboard. Coffee and cocktail tables. Entertainment center with stereo system. Full wet bar with icemaker and mini refrigerator, built-in storage cabinets, hi-lo TV with video system. New speakers throughout. Large dining area with table for 10.

## Galley

---

Marble countertops, stainless steel sink, four-burner Miele range with hood and exhaust fan,

built-in refrigerator/freezer, Miele dishwasher, Miele oven and microwave, trash compactor, Good Taste filters on drinking water lines to galley, AC water heater, hot and cold water pressure supplied by DC pump with pressure tank and pressure switch. Miele washer and dryer.

---

## Day Head

---

Day head with sink, gold-plated fittings and marble countertops.

---

## Pilothouse

---

Burl wood instrument console, adjustable helm seat, settee and table. Also includes chart table and chart storage, engine controls and instrumentation.

---

## Crew Quarters

---

Accommodations for four in two cabins. Stereo, head is ensuite with wash basin, shower and cabinets.

---

## Electronics

---

ELECTRONICS:Furuno GPS; ICOM VHFwith repeater on flybridge;Sailor RT 2047 VHF; Standard Horizon Depth sounder with repeater on flybridge; Furuno autopilot with compass and joystick - flybridge; Simrad Echosounder; Raytheon GPS with large screen; Koden MDC 40 mile radar; ICOM SSB; Sailor SSB compact 2000 simplex; Sailor Satcom MSP 4200 - voice and fax; intercom.FLYBRIDGE INSTRUMENT PANEL:Engine tachometers; gauges for temperature, engine oil pressure, gear box oil pressure; engine start/stop switches; controls for horn and windlass; autopilot; depth sounder; rudder angle indicator.PILOTHOUSE INSTRUMENT PANEL:Engine tachometers; gauges for temperature, engine oil pressure, gear box oil pressure; engine start/stop switches; engine alarm with test switch; battery parallel switch with warning light; warning light for high bilge water warning systems; controls for windshield washer/wiper, horns, searchlight and windlass.ENGINE INSTRUMENTS IN ENGINE ROOM:Tachometer; engine oil pressure gauge; gear box oil pressure gauge; engine temperature gauge; warning lights.

---

## Flybridge

---

Stainless steel rails and stanchions; dual radar arch and mast with antenna and navigation lights; fiberglass settees and tables; entertainment area; Frigibar refrigerator, BBQ; deck shower; helmsman and passenger seats; davit for tender; 15' Nautica widebody 1999 with 50 HP Yamaha 4-stroke outboard; 2000 Yamaha 760 Waverunner; control station with engine controls. Full length bimini -- 3 pieces.

---

## Deck Equipment

---

Two electric windlasses - 24V/ 2000 watt each; mooring capstan 1500 watts - aft deck; bow and stern cleats and chocks; forepeak storage locker; foredeck saltwater wash down system; stainless steel rails and stanchions; sunpads; settee; instruments; sunpad and windscreen covers; shower at swim platform and bow; two 8-man self-inflatable life rafts; life rings with safety lights; hydraulic gangway/swim ladder; deck furniture.

---

## Electrical System

---

110V System: Two battery banks for a total of 1400 amp hours; battery charger system with automatic AC/DC transformer and 100 amp rectifier; AC/DC alternators belt driven from engines; two pole insulated DC distribution system with automatic circuit breakers; 2.5 kW Hart Interface Inverter/Charger. 220V System: Two generators - 32kW; 100 amp single phase shore connection with AC transformers for ship's service and air conditioning; electric control and distribution panels with circuit breakers; voltmeters, ammeters and generator frequency system. Worldwide electrical system. New house service batteries 12-8D (Sept. 2004), new generator starting batteries; new main engine starting batteries; new radio batteries.

---

## Mechanical Equipment

---

Shipwrights 35 HP Hydraulic bowthruster (new 2000). HRO Systems watermaker. Air conditioning system with reverse cycle heating - 120,000 BTUs. Security alarm system. BILGE SYSTEM: five bilge compartments, each with automatic pump; bilge water alarm in each compartment with warning lights panel in pilothouse; emergency suction in the engine room via main engine raw water pump; manual bilge pump in engine room. There is also a central manifold emergency bilge pump system. FIRE FIGHTING SYSTEM: Halon 1301 or CO2 semi-automatic system in engine room with autoengine shutoff; portable extinguishers throughout; electric 220V AC pump with hose outlets, fore and aft with flexible hose. New holding tanks, two 32kW G & M generators. Propellers and shafts overhauled June 2004. Trim tabs.

---

## Hull

---

Watertight bow compartment. New bottom paint - June 2004

---

## Exclusions

---

Art work. Owner's personal effects.

---

## Remarks

---



This Azimut 94 Motor Yacht is a must-see for the discerning buyer. Many updates including new decor, carpeting, accordion shades. Owner financing available for qualified buyers. **\*\*NOT FOR SALE OR CHARTER TO U.S. RESIDENTS WHILE IN U.S. WATERS\*\***

## Disclaimer

---

The Company offers the details of this vessel in good faith but cannot guarantee or warrant the accuracy of this information nor warrant the condition of the vessel. A buyer should instruct his agents, or his surveyors, to investigate such details as the buyer desires validated. This vessel is offered subject to prior sale, price change, or withdrawal without notice.

## Исключения

---

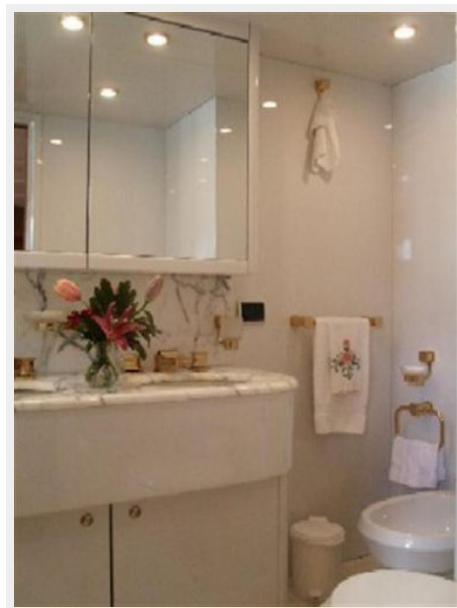
При продаже яхты исключаются личные вещи владельца.

## Отказ от ответственности

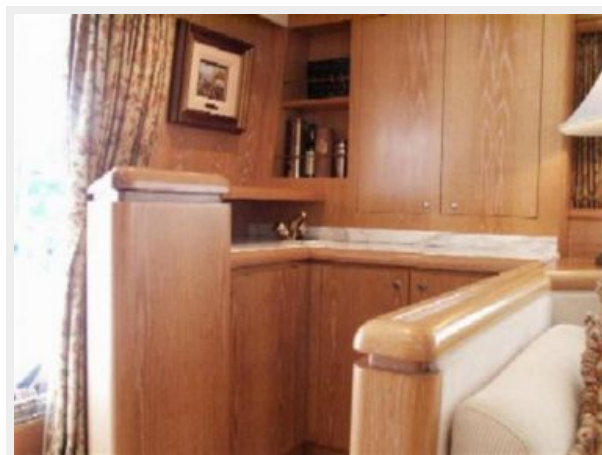
---

Компания предоставляет описание судна или яхты добросовестно, но не может гарантировать точность этой информации, а также не ручается за техническое состояние. Покупатель должен проинструктировать своих агентов или оценщиков исследовать представленную информацию более подробно, по собственному желанию. Продажа судна или яхты, изменение цены или снятие с продажи будет происходить без предварительного уведомления.

# ФОТОГРАФИИ



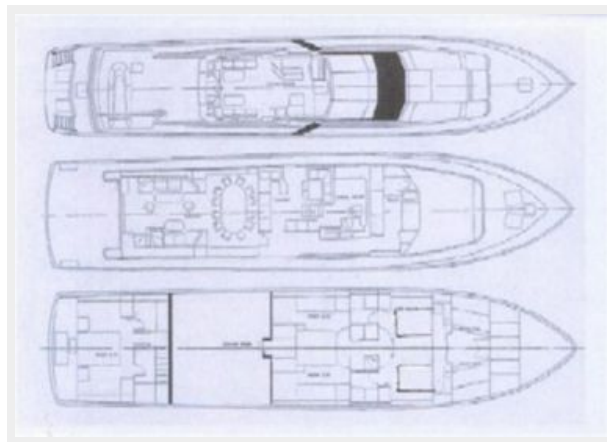
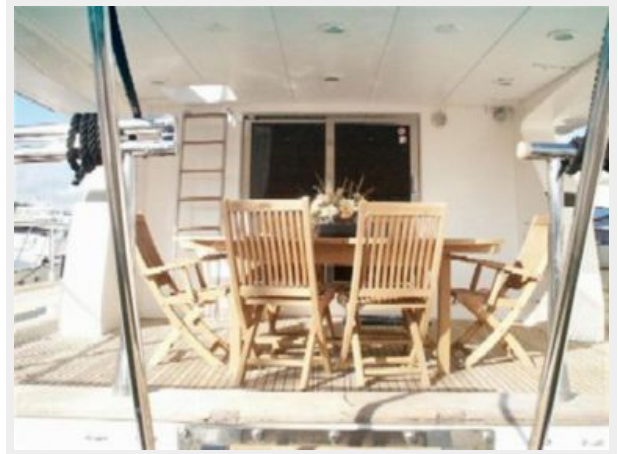














# КОНТАКТЫ

---

Андрей Шестаков (Andrey Shestakov) – ведущий яхтенный брокер отдела продаж яхт и судов компании Shestakov Yacht Sales Inc. Официальный представитель Shestakov Yacht Sales Inc. для русскоговорящих клиентов в центральном офисе компании в Майами/Форт Лодердейл/Флорида/США.

## Контактная информация

---

Email: [andrey@shestakovyachtsales.com](mailto:andrey@shestakovyachtsales.com)

Web: [shestakovyachtsales.com](http://shestakovyachtsales.com)

## Телефоны

---

Краснодарский край: **+7(918)465-66-44**

США, Майами, Флорида: **+1(954)274-4435**

## Время работы

---

Понедельник – Суббота: **9:00 - 21:00**  
EDT

Воскресенье: **Закрыто**

## Адрес

---



Harbour Towne Marina, 850 NE 3rd St,  
STE 213, Dania, FL 33004