

DOPAMINE — MANGUSTA



Builder: MANGUSTA

Year Built: 2021

Model: Motor Yacht

Price: PRICE ON APPLICATION

Location: United States

LOA: 109' 3" (33.3mm)

Beam: 24.25

Max Draft: 6' 2" (1.88mm)

Cruise Speed: 21 Knots Kts. (24 MPH)

Max Speed: 26 Knots Kts. (30 MPH)

Our experienced yacht broker, Andrey Shestakov, will help you choose and buy a yacht that best suits your needs **DOPAMINE — MANGUSTA** from our catalogue. Presently, at Shestakov Yacht Sales Inc., we have a wide variety of yachts available on our sale's list. We also work in close contact with all the big yacht manufacturers from all over the world.

If you would like to buy a yacht **DOPAMINE — MANGUSTA** or would like help answering any questions concerning purchasing, selling or chartering a yacht, please call **+1(954)274-4435**

TABLE OF CONTENTS

TABLE OF CONTENTS	2
SPECIFICATIONS	3
Overview	3
Basic Information	3
Dimensions	3
Speed, Capacities and Weight	3
Accommodations	3
Hull and Deck Information	4
Engine Information	4
PHOTOS	5
CONTACTS	13
Contact details	13
Telephones	13
Office hours	13
Address	13

SPECIFICATIONS

Overview

DOPAMINE is a highly customized 33 Gran Sport that shows in better-than-new condition thanks to a full time crew of 6. Highlights include just over 1,000 original hours with her IPS under extended warranty, sleeps 10 guests in 5 cabins including a spacious on-deck master, innovating jacuzzi on the bow with extensive lounge area, and substantial tender garage back aft that can house a Williams 550 jet tender or 2 full size jet skis + additional water sports toys.

Basic Information

Category: Motor Yacht

Model Year: 2021

Year Built: 2021

Country: United States

Dimensions

LOA: 109' 3" (33.3mm)

Beam: 24.25

Max Draft: 6' 2" (1.88mm)

Speed, Capacities and Weight

Cruise Speed: 21 Knots Kts. (24 MPH)

Cruise Speed Range: 400

Max Speed: 26 Knots Kts. (30 MPH)

Gross Tonnage: 228 Pounds

Water Capacity: 530 Gallons

Fuel Capacity: 2780 Gal Gallons

Accommodations

Total Cabins: 5

Total Heads: 6

Crew Cabin: 5

Hull and Deck Information

Hull Material: Composite

Exterior Designer: ALBERTO MANCINI /
OVERMARINE GROUP

Interior Designer: ALBERTO MANCINI /
OVERMARINE GROUP

Engine Information

Engines: 4

Manufacturer: Volvo Penta

Engine Type: Inboard

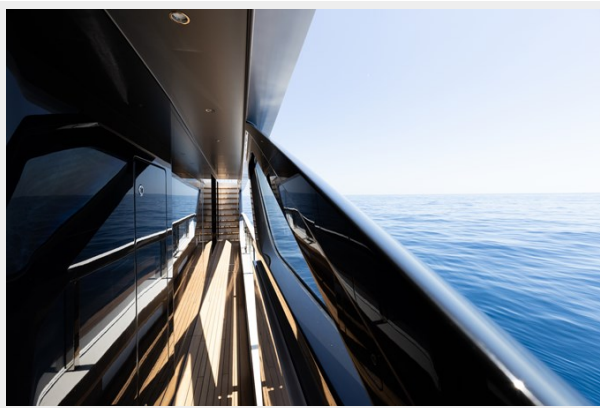
Fuel Type: Diesel

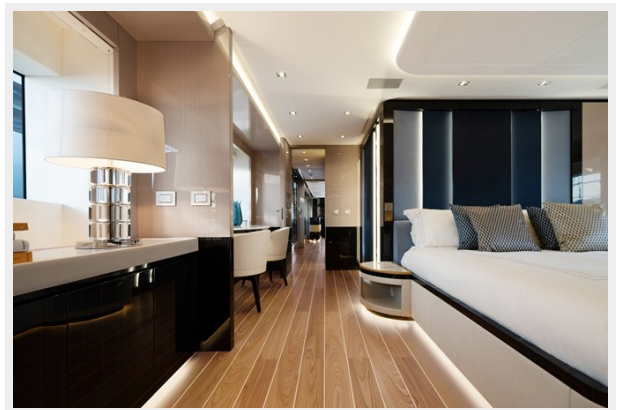
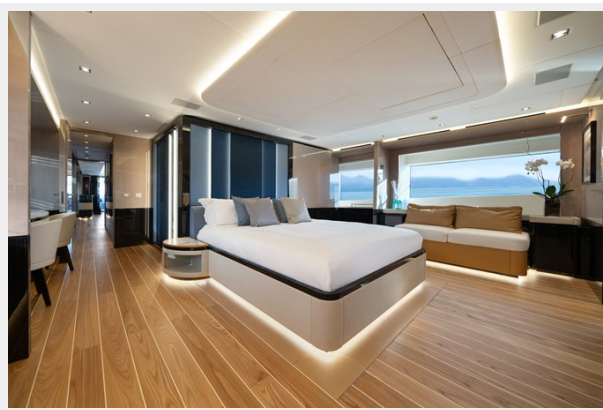
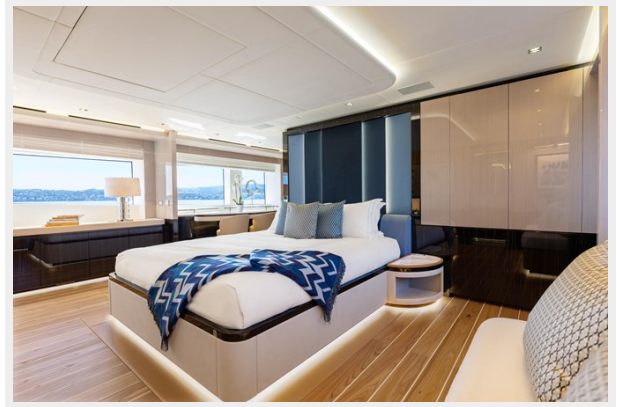
PHOTOS

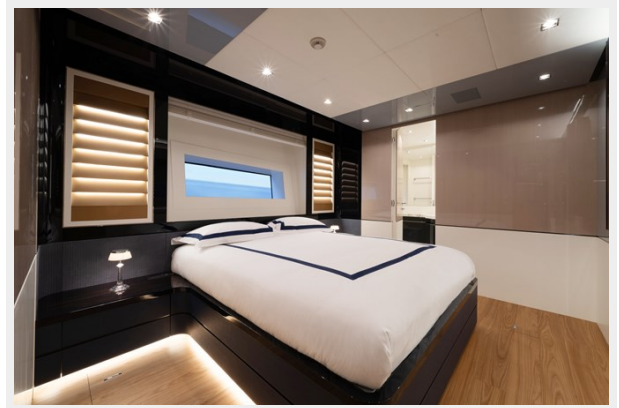
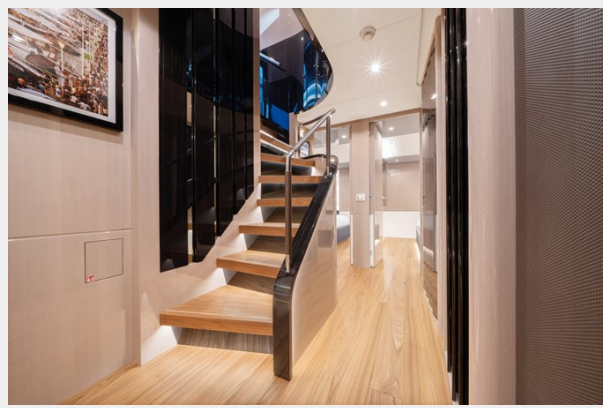
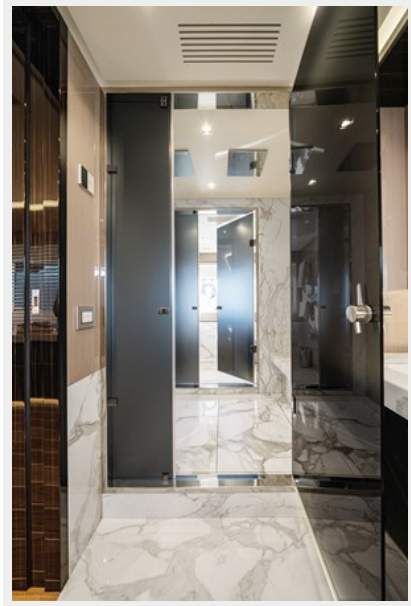
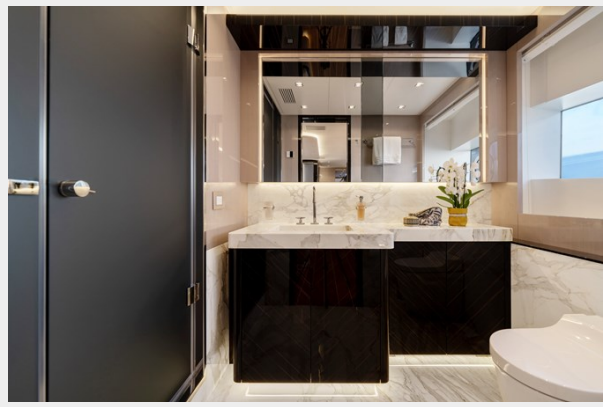
















CONTACTS

Andrey Shestakov, leading yacht broker of the sales department of Shestakov Yacht Sales Inc. Shestakov Yacht Sales Inc., the official representative of the Miami/Fort Lauderdale FL headquarters.

Contact details

Email: andrey@shestakovyachtsales.com

Web: shestakovyachtsales.com/en/

Telephones

USA: +1(954)274-4435

Office hours

Monday – Saturday: **9:00 - 21:00** EDT

Sunday: **closed**

Address



Harbour Towne Marina, 850 NE 3rd St,
STE 213, Dania, FL 33004