

NO! NO! BAD DOG — SEA RAY



Builder: SEA RAY

Year Built: 2005

Model: Motor Yacht

Price: \$395,000 USD

Location: United States

LOA: 52' 3" (15.93mm)

Beam: 15.25

Min Draft: 4' 2" (1.27mm)

Cruise Speed: 20 Knots Kts. (23 MPH)

Max Speed: 30 Knots Kts. (35 MPH)

Our experienced yacht broker, Andrey Shestakov, will help you choose and buy a yacht that best suits your needs **NO! NO! BAD DOG — SEA RAY** from our catalogue. Presently, at Shestakov Yacht Sales Inc., we have a wide variety of yachts available on our sale's list. We also work in close contact with all the big yacht manufacturers from all over the world.

If you would like to buy a yacht **NO! NO! BAD DOG — SEA RAY** or would like help answering any questions concerning purchasing, selling or chartering a yacht, please call **+1(954)274-4435**

TABLE OF CONTENTS

TABLE OF CONTENTS	2
SPECIFICATIONS	4
Overview	4
Basic Information	4
Dimensions	4
Speed, Capacities and Weight	4
Accommodations	5
Hull and Deck Information	5
Engine Information	5
PHOTOS	6
Profile	6
Bow	6
Aft	6
Flybridge	6
Helm	7
Flybridge	7
Flybridge	7
Deck	7
Salon	8
Salon	8
Salon	8
Salon	8
Galley	9
Galley	9
Master Stateroom	9
Master Stateroom	9
Master Stateroom Head	10
Master Stateroom Head	10

VIP Stateroom	10
Guest Head	10
Guest Stateroom	11
CONTACTS	12
Contact details	12
Telephones	12
Office hours	12
Address	12

SPECIFICATIONS

Overview

This Sea Ray 52' Sedan Bridge is an impressive yacht and will draw attention wherever she goes. She is outfitted with a fiberglass hardtop, air-conditioned bridge with full enclosure. Entering through the sliding glass door, the salon features Ultra leather sofas, an entertainment center with flat screen TV and a fully equipped midlevel galley with Corian countertops. The raised dinette offers 360-degree views of the water and a utility room under the galley sole houses a washer/dryer with plenty of storage. Below the deck are 3 staterooms and 2 large heads with stall showers. The molded staircase leads from the cockpit up to the flybridge with curved seating areas with table forward of the helm. The hatch in the cockpit leads to the engine room and large swim platform.

Basic Information

Category: Motor Yacht

Model Year: 2005

Year Built: 2005

Country: United States

Dimensions

LOA: 52' 3" (15.93mm)

Beam: 15.25

Min Draft: 4' 2" (1.27mm)

Speed, Capacities and Weight

Cruise Speed: 20 Knots Kts. (23 MPH)

Max Speed: 30 Knots Kts. (35 MPH)

Water Capacity: 140 Gallons

Holding Tank: 68 Gal Gallons

Fuel Capacity: 500 Gal Gallons

Accommodations

Total Cabins: 3

Sleeps: 6

Total Heads: 2

Hull and Deck Information

Hull Material: FRP

Deck Material: FRP

Hull Color: White

Engine Information

Engines: 2

Manufacturer: Cummins

Engine Type: Inboard

Fuel Type: Diesel

PHOTOS

Profile



Bow



Aft



Flybridge



Flybridge



Helm



Flybridge



Deck



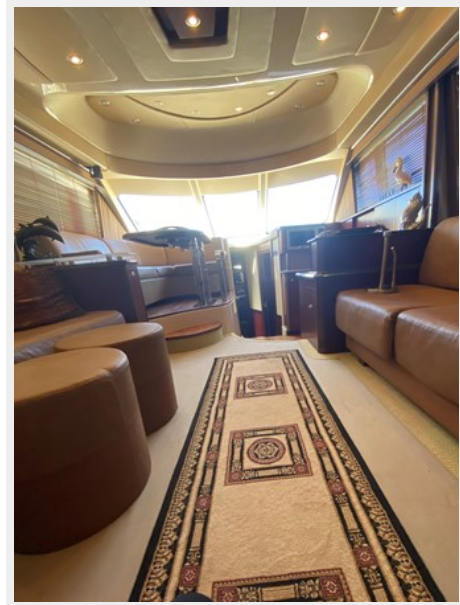
Salon



Salon



Salon



Salon



Galley



Galley



Master Stateroom



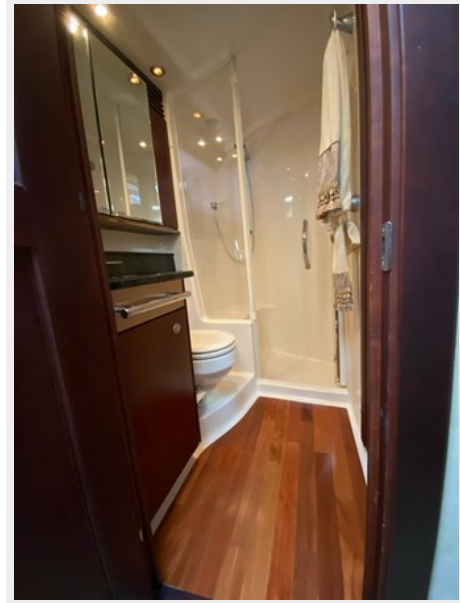
Master Stateroom



Master Stateroom Head



Master Stateroom Head



VIP Stateroom



Guest Head



Guest Stateroom



CONTACTS

Andrey Shestakov, leading yacht broker of the sales department of Shestakov Yacht Sales Inc. Shestakov Yacht Sales Inc., the official representative of the Miami/Fort Lauderdale FL headquarters.

Contact details

Email: andrey@shestakovyachtsales.com

Web: shestakovyachtsales.com/en/

Telephones

USA: +1(954)274-4435

Office hours

Monday – Saturday: **9:00 - 21:00** EDT

Sunday: **closed**

Address



Harbour Towne Marina, 850 NE 3rd St,
STE 213, Dania, FL 33004