

EUFLORIA — MAINSHIP



Builder: MAINSHIP

Year Built: 2008

Model: cruiser

Price: PRICE ON APPLICATION

Location: United States

LOA: 34' (10.36m)

Beam: 12.25

Min Draft: 3' 3" (0.99m)

Max Draft: 3' 3" (0.99m)

Our experienced yacht broker, Andrey Shestakov, will help you choose and buy a yacht that best suits your needs **Eufhoria — MAINSHIP** from our catalogue. Presently, at Shestakov Yacht Sales Inc., we have a wide variety of yachts available on our sale's list. We also work in close contact with all the big yacht manufacturers from all over the world.

If you would like to buy a yacht **Eufhoria — MAINSHIP** or would like help answering any questions concerning purchasing, selling or chartering a yacht, please call **+1(954)274-4435**

TABLE OF CONTENTS

TABLE OF CONTENTS	2
SPECIFICATIONS	4
Overview	4
Basic Information	4
Dimensions	4
Speed, Capacities and Weight	4
Accommodations	4
Hull and Deck Information	4
Engine Information	5
PHOTOS	6
2_2796821_	6
1_2796821_	6
3_2796821_	6
4_2796821_	6
5_2796821_	6
6_2796821_	6
7_2796821_	7
8_2796821_	7
9_2796821_	7
10_2796821_	7
12_2796821_	7
11_2796821_	7
13_2796821_	8
14_2796821_	8
16_2796821_	8
15_2796821_	8
17_2796821_	8
18_2796821_	8

19_2796821_	9
20_2796821_	9
22_2796821_	9
21_2796821_	9
23_2796821_	9
24_2796821_	9
25_2796821_	10
26_2796821_	10
27_2796821_	10
28_2796821_	10
29_2796821_	10
30_2796821_	10
31_2796821_	11
32_2796821_	11
33_2796821_	11
34_2796821_	11
35_2796821_	11
36_2796821_	11
37_2796821_	12
38_2796821_	12
39_2796821_	12
CONTACTS	13
Contact details	13
Telephones	13
Office hours	13
Address	13

SPECIFICATIONS

Overview

No other Mainship on the market is in this good of condition. Check this out before you see the others. See the list of upgrades and recent maintenance items below.

"Eufhoria" is a Mainship 34 pilot which is a well proportioned Down-East style cruising yacht. The vessel is very clean, well cared for and maintained. Twin Yanmar 210 hp with side power bow thruster makes docking and tight quarters maneuvering easy. Brand New Canvas! New GPS & Radar in 2021. New Flat Screen 32" TV. Props and Shafts rebalanced in 2021. Bottom paint in 2021. Inverter installed in 2020. 5.5KW Nex Gen Generator installed in 2017.

Basic Information

Category: cruiser

Model Year: 2008

Year Built: 2008

Country: United States

Dimensions

LOA: 34' (10.36mm)

Beam: 12.25

Min Draft: 3' 3" (0.99mm)

Max Draft: 3' 3" (0.99mm)

Speed, Capacities and Weight

Water Capacity: 70 Gallons

Fuel Capacity: 250 Gal Gallons

Accommodations

Total Cabins: 1

Total Heads: 1

Hull and Deck Information

Hull Material: Fiberglass

Engine Information

Engines: 2

Manufacturer: Yanmar

Engine Type: Inboard

Fuel Type: Diesel

PHOTOS

1_2796821_



2_2796821_



3_2796821_



4_2796821_



5_2796821_



6_2796821_



7_2796821_



8_2796821_



9_2796821_



10_2796821_



11_2796821_



12_2796821_



13_2796821_



14_2796821_



16_2796821_

15_2796821_



17_2796821_



18_2796821_



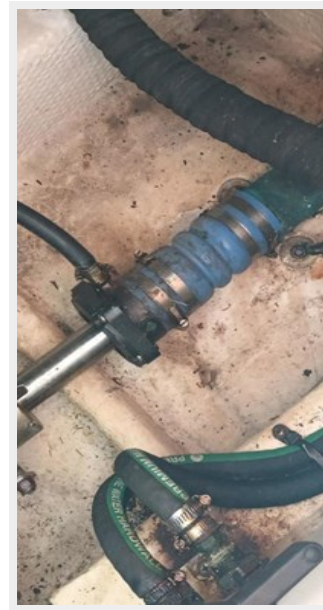
19_2796821_



20_2796821_



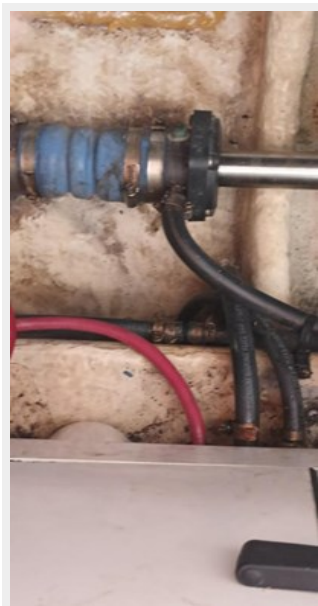
22_2796821_



21_2796821_



23_2796821_



24_2796821_



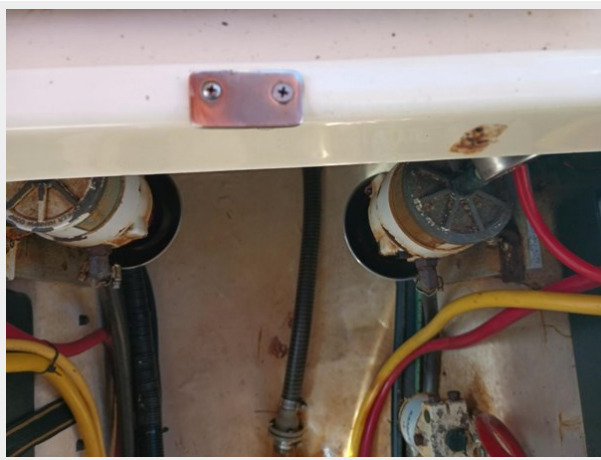
25_2796821_



26_2796821_



27_2796821_



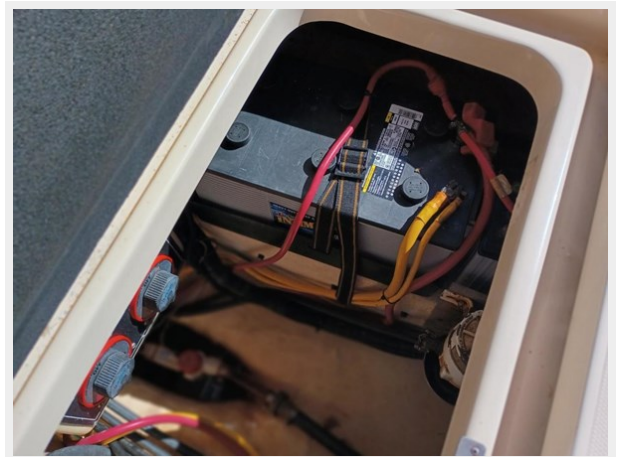
28_2796821_



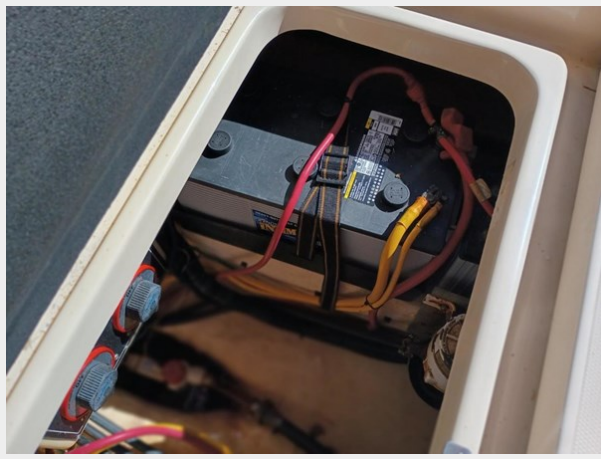
29_2796821_



30_2796821_



31_2796821_



32_2796821_



33_2796821_



34_2796821_



35_2796821_



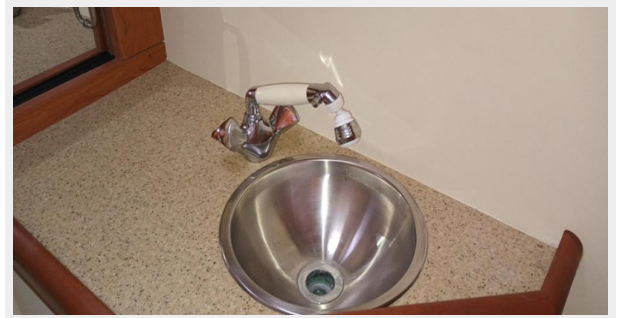
36_2796821_



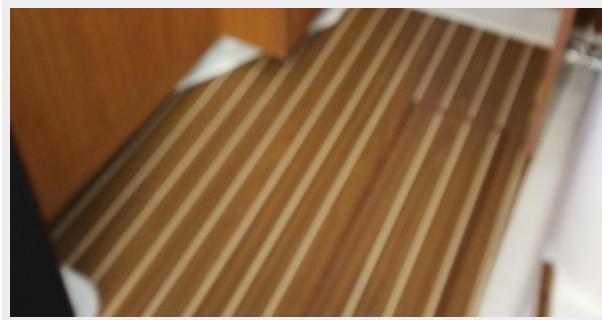
37_2796821_



38_2796821_



39_2796821_



CONTACTS

Andrey Shestakov, leading yacht broker of the sales department of Shestakov Yacht Sales Inc. Shestakov Yacht Sales Inc., the official representative of the Miami/Fort Lauderdale FL headquarters.

Contact details

Email: andrey@shestakovyachtsales.com

Web: shestakovyachtsales.com/en/

Telephones

USA: +1(954)274-4435

Office hours

Monday – Saturday: **9:00 - 21:00** EDT

Sunday: **closed**

Address



Harbour Towne Marina, 850 NE 3rd St,
STE 213, Dania, FL 33004