

MITI ONE — BODRUM OGUZ MARIN



Builder: BODRUM OGUZ MARIN

Year Built: 2021

Model: Cruising Ketch

Price: €6,290,000 EUR

Location: Turkey

LOA: 111' 9" (34.06mm)

Beam: 27.55

Min Draft: 9' 10" (2.99mm)

Max Draft: 11' 8" (3.55mm)

Cruise Speed: 9 Knots Kts. (10 MPH)

Max Speed: 13 Knots Kts. (15 MPH)

Our experienced yacht broker, Andrey Shestakov, will help you choose and buy a yacht that best suits your needs **MITI ONE — BODRUM OGUZ MARIN** from our catalogue. Presently, at Shestakov Yacht Sales Inc., we have a wide variety of yachts available on our sale's list. We also work in close contact with all the big yacht manufacturers from all over the world.

If you would like to buy a yacht **MITI ONE — BODRUM OGUZ MARIN** or would like help answering any questions concerning purchasing, selling or chartering a yacht, please call **+1(954)274-4435**

TABLE OF CONTENTS

TABLE OF CONTENTS	2
SPECIFICATIONS	3
Overview	3
Basic Information	3
Dimensions	4
Speed, Capacities and Weight	4
Accommodations	4
Hull and Deck Information	4
Engine Information	4
PHOTOS	5
CONTACTS	13
Contact details	13
Telephones	13
Office hours	13
Address	13

SPECIFICATIONS

Overview

Designed for and with an experienced sailor and knowledgeable yacht owner, the sailing yacht Miti One was built in marine grade steel to the highest European standards by renown Oguz Marin shipyard in Bodrum and delivered in June 2021 as a unique, fully custom sailing yacht, perfectly combining the pleasure of pure sailing and the comfort of a large and modern luxury yacht. Commercially registered under the Malta flag and built according to the Rina classification for long range navigation, S/Y Miti One is already a very successful charter yacht which has just been launched from the shipyard after finalising her last warranty works. This wide and cozy cruising sailing yacht with very modern design offers an impressive interior volume of 198 GT with a very clever layout and interior arrangement. Her main saloon hosts a 10 guests dining table, a lounge area and a fully equipped bar. She can accommodate up to 11 guests in 5 luxury cabins, including a vast Master cabin with ensuite bathroom, 3 VIP cabins and 1 Twin. On her 8.4m wide aft deck, a huge sunbed overlooks a wonderful “al fresco” dining area for up to 12 guests, while the fore deck also offers an attractive sunbed with an amazing 180° sea view. A 3.5m bowsprit adds style to her elegant design, while improving her sailing performance. S/Y Miti One has a “Ketch” rigging with 2 tall aluminium masts. Her main mast of 30m and the mizen mast of 23m, together can display a total of 520m² of Prisma sails. Thanks to her hull design and 3.55m draft, S/Y Miti One is a very stable and seaworthy yacht, ensuring great comfort to her guests while navigating or at anchor. Equipped with 2 x Baudoin diesel engines of 450hp each, this very economical and eco-friendly yacht can reach a top speed of 13 knots and can cruise smoothly at 9 knots, burning only 64 liters per hour and allowing a range of 2,000 nautical miles. Her flexible solar panels laying on the hard-top and roof can provide 5kw and a Hamman sewage treatment system helps her respect even more the environment and her guests’ well-being. Designed and built to provide maximum pleasure and fun to her guests, S/Y Miti One owns a powerful 5.2m tender capable of towing water-skiers, wake-boarders and the many towable toys available on board. Many other toys, including 2 Yamaha Seawing II and 2 paddle boards are at the guests’ disposal. Presented in immaculate condition and offered at a very attractive price, S/Y Miti One is definitely the best choice for sensible sailing lovers who demand the highest safety and comfort and care about elegance and style.

Basic Information

Category: Cruising Ketch

Model Year: 2021

Year Built: 2021

Country: Turkey

Dimensions

LOA: 111' 9" (34.06mm)

LWL: 102' 8" (31.27mm)

Beam: 27.55

Min Draft: 9' 10" (2.99mm)

Max Draft: 11' 8" (3.55mm)

Speed, Capacities and Weight

Cruise Speed: 9 Knots Kts. (10 MPH)

Cruise Speed Range: 2000

Max Speed: 13 Knots Kts. (15 MPH)

Gross Tonnage: 198 Pounds

Water Capacity: 7600 Gallons

Fuel Capacity: 3936.16 Gal Gallons

Accommodations

Total Cabins: 5

Sleeps: 11

Total Heads: 5

Crew Cabin: 6

Crew Heads: 4

Hull and Deck Information

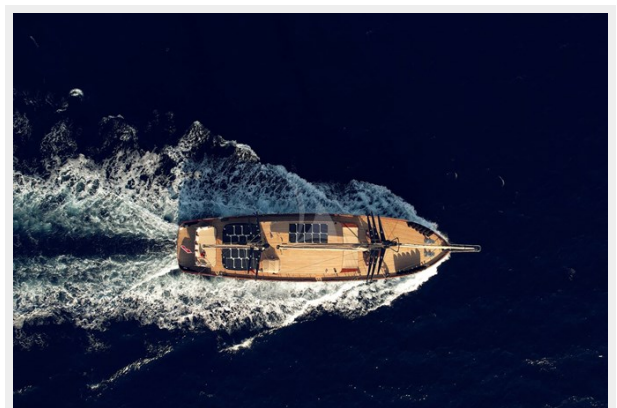
Hull Material: Steel

Engine Information

Engines: 2

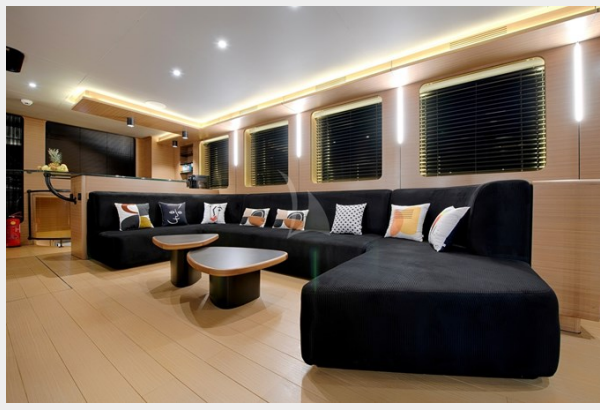
Manufacturer: Baudoin

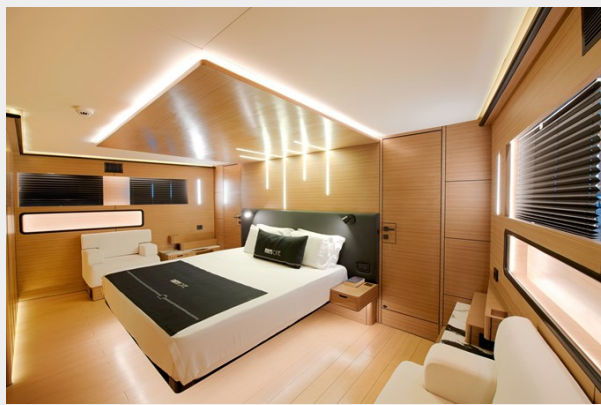
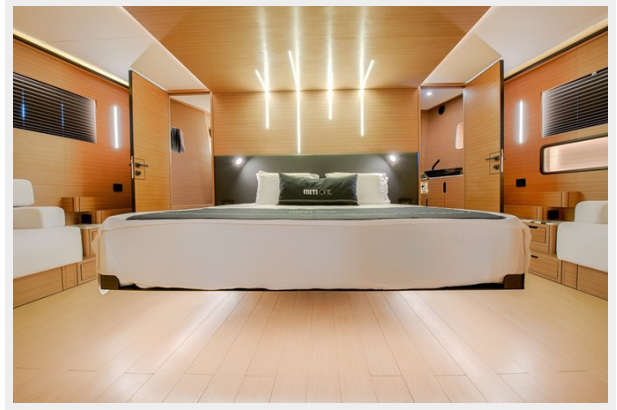
PHOTOS

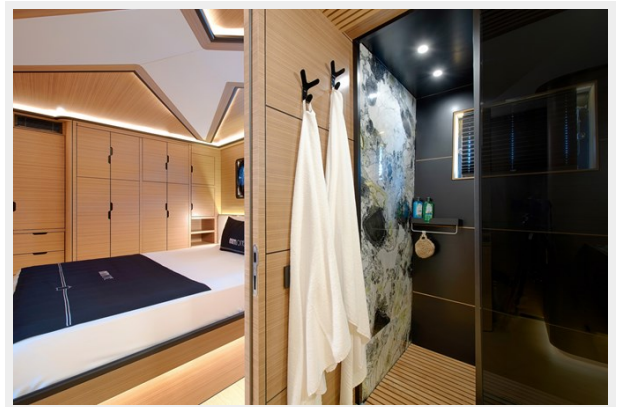
















CONTACTS

Andrey Shestakov, leading yacht broker of the sales department of Shestakov Yacht Sales Inc. Shestakov Yacht Sales Inc., the official representative of the Miami/Fort Lauderdale FL headquarters.

Contact details

Email: andrey@shestakovyachtsales.com

Web: shestakovyachtsales.com/en/

Telephones

USA: +1(954)274-4435

Office hours

Monday – Saturday: **9:00 - 21:00** EDT

Sunday: **closed**

Address



Harbour Towne Marina, 850 NE 3rd St,
STE 213, Dania, FL 33004