

RAVEN — PRESENT YACHTS



Builder: PRESENT YACHTS

Year Built: 1985

Model: trawler

Price: PRICE ON APPLICATION

Location: United States

LOA: 42' (12.8mm)

Beam: 13.58

Max Draft: 3' 5" (1.04mm)

Our experienced yacht broker, Andrey Shestakov, will help you choose and buy a yacht that best suits your needs **Raven — PRESENT YACHTS** from our catalogue. Presently, at Shestakov Yacht Sales Inc., we have a wide variety of yachts available on our sale's list. We also work in close contact with all the big yacht manufacturers from all over the world.

If you would like to buy a yacht **Raven — PRESENT YACHTS** or would like help answering any questions concerning purchasing, selling or chartering a yacht, please call **+1(954)274-4435**

TABLE OF CONTENTS

TABLE OF CONTENTS	2
SPECIFICATIONS	5
Overview	5
Basic Information	5
Dimensions	5
Speed, Capacities and Weight	5
Accommodations	6
Hull and Deck Information	6
Engine Information	6
PHOTOS	7
8703285_20230223082312953_1_XLARGE	7
8703285_20230223082325693_1_XLARGE	7
8703285_20230223082336796_1_XLARGE	7
8703285_20230223082347668_1_XLARGE	7
8703285_20230223082106979_1_XLARGE	7
8703285_20230223082118023_1_XLARGE	7
8703285_20230223082055143_1_XLARGE	8
8703285_20230223082300393_1_XLARGE	8
8703285_20230223082131634_1_XLARGE	8
8703285_20230223082147551_1_XLARGE	8
8703285_20230223082203617_1_XLARGE	8
8703285_20230223082209668_1_XLARGE	8
8703285_20230223082225004_1_XLARGE	9
8703285_20230223082236678_1_XLARGE	9
8703285_20230223082248257_1_XLARGE	9
8703285_20230223082158928_1_XLARGE	9
8703285_20230223082403926_1_XLARGE	9
8703285_20230223082429302_1_XLARGE	9

8703285_20230223082440612_1_XLARGE	10
8703285_20230223082451464_1_XLARGE	10
8703285_20230223082417789_1_XLARGE	10
8703285_20230223082359581_1_XLARGE	10
8703285_20230223082530056_1_XLARGE	10
8703285_20230223082540991_1_XLARGE	10
8703285_20230223082551008_1_XLARGE	11
8703285_20230223082517414_1_XLARGE	11
8703285_20230223082502650_1_XLARGE	11
8703285_20230223082602837_1_XLARGE	11
8703285_20230223082639417_1_XLARGE	11
8703285_20230223082649055_1_XLARGE	11
8703285_20230223082658964_1_XLARGE	12
8703285_20230223082711815_1_XLARGE	12
8703285_20230223082738976_1_XLARGE	12
8703285_20230223082726760_1_XLARGE	12
8703285_20230223082748456_1_XLARGE	13
8703285_20230223082800847_1_XLARGE	13
8703285_20230223082623753_1_XLARGE	13
8703285_20230223082812337_1_XLARGE	13
8703285_20230223082921981_1_XLARGE	13
8703285_20230223082910829_1_XLARGE	13
8703285_20230223082824674_1_XLARGE	14
8703285_20230223082858208_1_XLARGE	14
8703285_20230223082847708_1_XLARGE	14
8703285_20230223082836577_1_XLARGE	14
8703285_20230223082613336_1_XLARGE	15
8703285_20230223082629105_1_XLARGE	15
8703285_20230223083016022_1_XLARGE	15

8703285_20230223082933350_1_XLARGE	15
8703285_20230223082945997_1_XLARGE	15
8703285_20230223083000202_1_XLARGE	15
CONTACTS	16
Contact details	16
Telephones	16
Office hours	16
Address	16

SPECIFICATIONS

Overview

AS IS PRICING

At Survey found Vessel Needs a Bottom Job

Survey Available, Call Broker for Details

A Very Popular Sundeck Motor yacht with Reliable Twin 135hp Ford Lehman Diesels and 8kW Westerbeke Generator. Raymarine GPS/Chart/Autopilot, Morse Controls, Electric Windlass, Spacious Flybridge and Sundeck, 2000w Heart Invertor/Charger, Folding Radar Arch, Two Stateroom, Two Head Layout, Stored in Freshwater Most of the Year, Perfect Vessel to Start the Great Loop Adventure.

Basic Information

Category: trawler

Sub Category: Aft Cabin

Model Year: 1985

Year Built: 1985

Country: United States

Dimensions

LOA: 42' (12.8mm)

Beam: 13.58

Max Draft: 3' 5" (1.04mm)

Speed, Capacities and Weight

Water Capacity: 250 Gallons

Holding Tank: 60 Gal Gallons

Fuel Capacity: 500 Gal Gallons

Accommodations

Total Cabins: 2

Hull and Deck Information

Hull Material: Fiberglass

Engine Information

Engines: 2

Manufacturer: Ford Lehman

Engine Type: Inboard

Fuel Type: Diesel

PHOTOS

8703285_20230223082312953_1_XLARGE



8703285_20230223082325693_1_XLARGE



8703285_20230223082336796_1_XLARGE



8703285_20230223082347668_1_XLARGE



8703285_20230223082106979_1_XLARGE



8703285_20230223082118023_1_XLARGE



8703285_20230223082055143_1_XLARGE



8703285_20230223082300393_1_XLARGE



8703285_20230223082131634_1_XLARGE



8703285_20230223082147551_1_XLARGE



8703285_20230223082203617_1_XLARGE



8703285_20230223082209668_1_XLARGE



8703285_20230223082225004_1_XLARGE



8703285_20230223082236678_1_XLARGE



8703285_20230223082248257_1_XLARGE



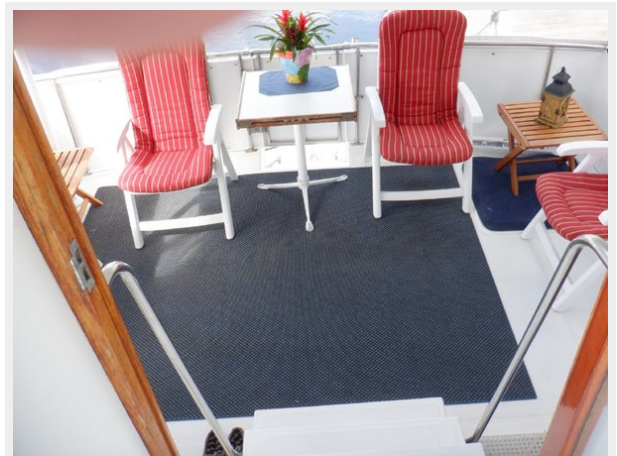
8703285_20230223082158928_1_XLARGE



8703285_20230223082403926_1_XLARGE



8703285_20230223082429302_1_XLARGE



8703285_20230223082440612_1_XLARGE

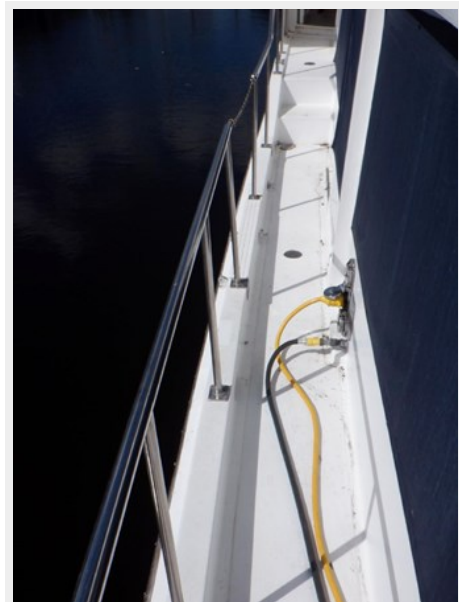


8703285_20230223082451464_1_XLARGE

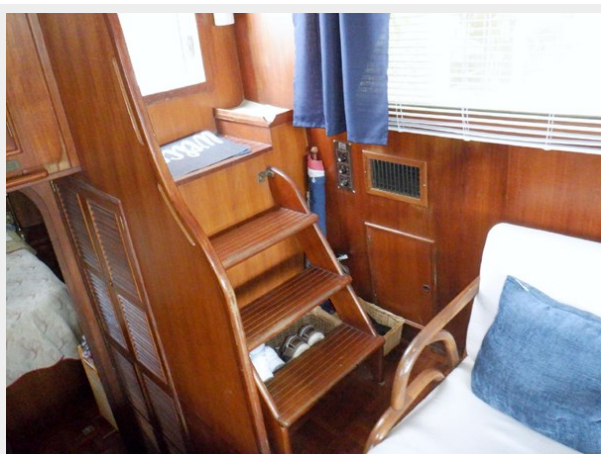


8703285_20230223082417789_1_XLARGE

8703285_20230223082359581_1_XLARGE



8703285_20230223082530056_1_XLARGE



8703285_20230223082540991_1_XLARGE



8703285_20230223082551008_1_XLARGE



8703285_20230223082517414_1_XLARGE



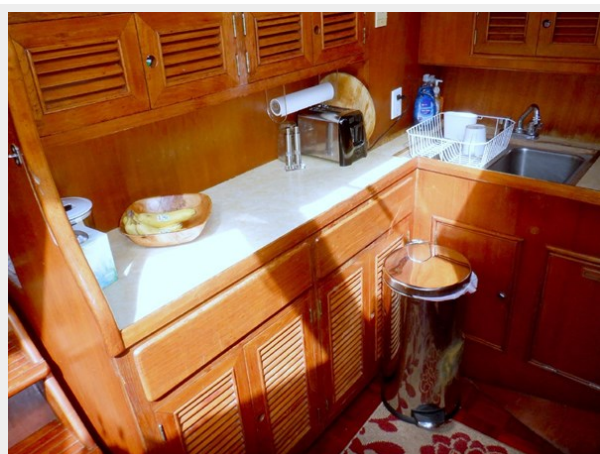
8703285_20230223082502650_1_XLARGE



8703285_20230223082602837_1_XLARGE



8703285_20230223082639417_1_XLARGE



8703285_20230223082649055_1_XLARGE



8703285_20230223082658964_1_XLARGE

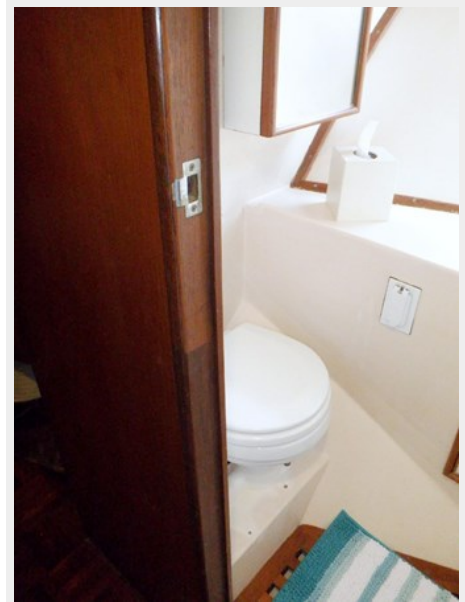


8703285_20230223082711815_1_XLARGE



8703285_20230223082738976_1_XLARGE

8703285_20230223082726760_1_XLARGE



8703285_20230223082748456_1_XLARGE



8703285_20230223082800847_1_XLARGE



8703285_20230223082623753_1_XLARGE



8703285_20230223082812337_1_XLARGE



8703285_20230223082921981_1_XLARGE



8703285_20230223082910829_1_XLARGE



8703285_20230223082824674_1_XLARGE

8703285_20230223082858208_1_XLARGE



8703285_20230223082847708_1_XLARGE

8703285_20230223082836577_1_XLARGE



8703285_20230223082613336_1_XLARGE



8703285_20230223082629105_1_XLARGE



8703285_20230223083016022_1_XLARGE



8703285_20230223082933350_1_XLARGE



8703285_20230223082945997_1_XLARGE



8703285_20230223083000202_1_XLARGE



CONTACTS

Andrey Shestakov, leading yacht broker of the sales department of Shestakov Yacht Sales Inc. Shestakov Yacht Sales Inc., the official representative of the Miami/Fort Lauderdale FL headquarters.

Contact details

Email: andrey@shestakovyachtsales.com

Web: shestakovyachtsales.com/en/

Telephones

USA: +1(954)274-4435

Office hours

Monday – Saturday: **9:00 - 21:00** EDT

Sunday: **closed**

Address



Harbour Towne Marina, 850 NE 3rd St,
STE 213, Dania, FL 33004