

## IRIMARI — SUNRISE



**Builder:** SUNRISE

**Year Built:** 2015

**Model:** Displacement

**Price:** PRICE ON APPLICATION

**Location:** Spain

**LOA:** 208' 8" (63.6mm)

**Beam:** 37.72

**Min Draft:** 11' 2" (3.4mm)

**Max Draft:** 11' 2" (3.4mm)

**Cruise Speed:** 11 Knots Kts. (13 MPH)

**Max Speed:** 16 Knots Kts. (18 MPH)

Our experienced yacht broker, Andrey Shestakov, will help you choose and buy a yacht that best suits your needs **IRIMARI — SUNRISE** from our catalogue. Presently, at Shestakov Yacht Sales Inc., we have a wide variety of yachts available on our sale's list. We also work in close contact with all the big yacht manufacturers from all over the world.

If you would like to buy a yacht **IRIMARI — SUNRISE** or would like help answering any questions concerning purchasing, selling or chartering a yacht, please call **+1(954)274-4435**

---

# TABLE OF CONTENTS

---

TABLE OF CONTENTS	2
SPECIFICATIONS	4
Overview	4
Basic Information	4
Dimensions	4
Speed, Capacities and Weight	4
Accommodations	5
Hull and Deck Information	5
Engine Information	5
PHOTOS	6
10942.6	6
10942.7	6
10942.9	6
10942.10	6
10942.11	6
10942.12	6
10942.13	7
10942.14	7
10942.15	7
10942.16	7
10942.17	7
10942.18	7
10942.19	8
10942.20	8
10942.21	8
CONTACTS	9
Contact details	9
Telephones	9

---

Office hours

9

---

Address

9

---

# SPECIFICATIONS

---

## Overview

---

Built by Sunrise Yachts in 2015, 64m IRIMARI is an impressive ocean-going mega yacht, with transoceanic range and an elegant exterior designed by the ever-talented Espen Øino.

At nearly 1,350 gross tons, IRIMARI is the largest yacht to date from the Sunrise fleet. With quality construction and a perfectly designed hull, the yacht was designed to offer the ultimate comfort at sea, both for extended cruising and entertaining. Accommodation is provided for 12 guests in 6 outstanding staterooms including an exceptional full-beam master suite, as well as quarters for a professional crew of 18.

## Basic Information

---

**Category:** Displacement

**Sub Category:** Displacement

**Model Year:** 2015

**Year Built:** 2015

**Refit Type:** New Stabilizer + Paint

**Country:** Spain

## Dimensions

---

**LOA:** 208' 8" (63.6mm)

**Beam:** 37.72

**Min Draft:** 11' 2" (3.4mm)

**Max Draft:** 11' 2" (3.4mm)

## Speed, Capacities and Weight

---

**Cruise Speed:** 11 Knots Kts. (13 MPH)

**Cruise Speed Range:** 5000

**Max Speed:** 16 Knots Kts. (18 MPH)

**Gross Tonnage:** 1347 Pounds

**Fuel Capacity:** 42531.7 Gal Gallons

**Fuel Consumption:** 92.46 Gal Gallons

---

## Accommodations

---

**Total Cabins:** 6

**Crew Cabin:** 18

---

## Hull and Deck Information

---

**Hull Material:** Steel

**Deck Material:** Esthec

**Hull Configuration:** Full Displacement

**Hull Color:** White

**Hull Designer:** Unique Yacht Design

**Exterior Designer:** Espen Øino

**Interior Designer:** Focus Yacht Design

---

## Engine Information

---

**Engines:** 2

**Manufacturer:** MTU

**Engine Type:** Inboard

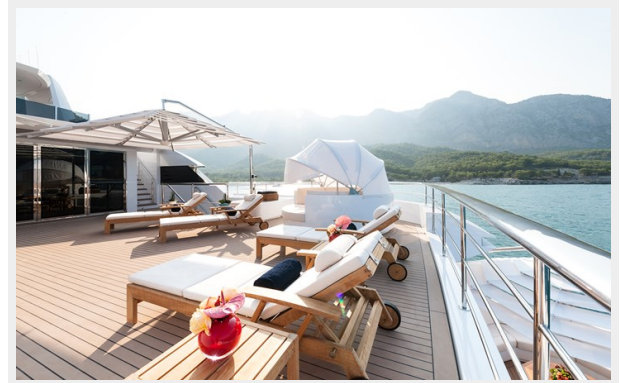
**Fuel Type:** Diesel

# PHOTOS

10942.6



10942.7



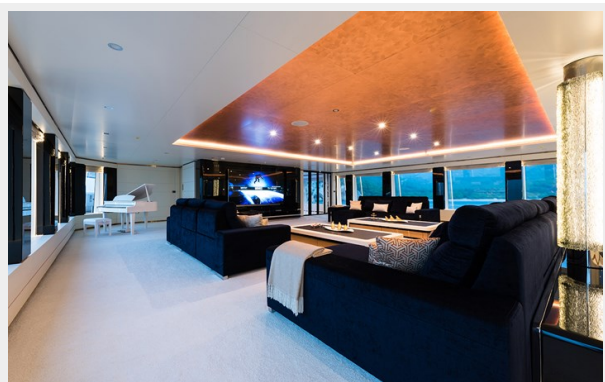
10942.9



10942.10



10942.11



10942.12



10942.13



10942.14



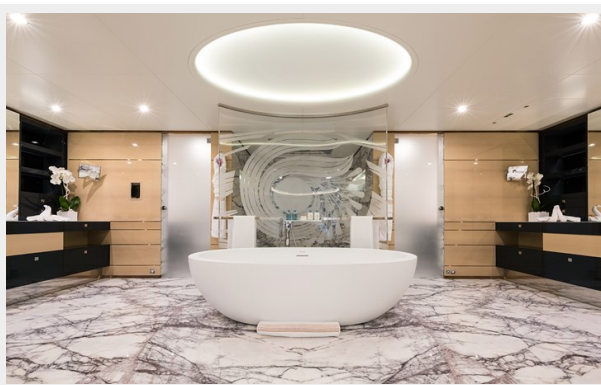
10942.15



10942.16



10942.17



10942.18



10942.19



10942.20



10942.21





---

# CONTACTS

---

Andrey Shestakov, leading yacht broker of the sales department of Shestakov Yacht Sales Inc. Shestakov Yacht Sales Inc., the official representative of the Miami/Fort Lauderdale FL headquarters.

---

## Contact details

---

Email: [andrey@shestakovyachtsales.com](mailto:andrey@shestakovyachtsales.com)

Web: [shestakovyachtsales.com/en/](http://shestakovyachtsales.com/en/)

---

## Telephones

---

USA: +1(954)274-4435

---

## Office hours

---

Monday – Saturday: **9:00 - 21:00** EDT

Sunday: **closed**

---

## Address

---



Harbour Towne Marina, 850 NE 3rd St,  
STE 213, Dania, FL 33004